



For Sale - Industrial/Retail Land

30351 HUNTWOOD AVE,
HAYWARD, CA 94544

Area

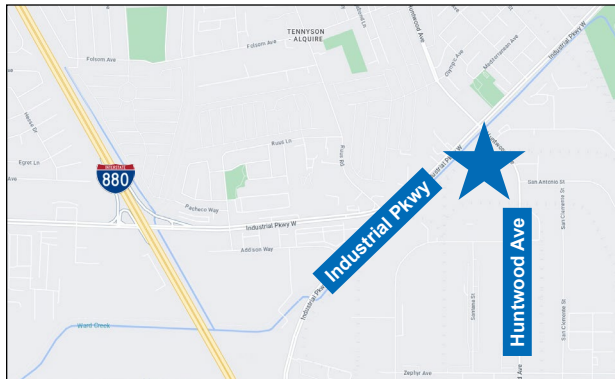
±1.41 Acres (±61,420 SF)

Property

±13,800 SF Building (Damaged by Fire)

APN

475-0021-012-00



Property Highlights

- High Visible Corner (Huntwood Avenue @ Industrial Parkway)
- Property Has It's Own Signalized Access
- ±1 Mile to I-880 Freeway (North+South)
- Suitable for Various Industrial & Retail Redevelopment

Zoning Information

- General Plan: IC (Industrial Corridor)
- Zoning: IP (Industrial Park)
- [Link to Zoning](#)

Comments

- Current Building Can Be Rebuilt or Demolished

Pricing Information

- Asking: \$3,295,000 (\$53.65/LSF)

For information, please contact:

Paul Mueller, SIOR

Senior Managing Director
t 510-220-3341
paul.mueller@nrmk.com
CA RE LIC #00832933

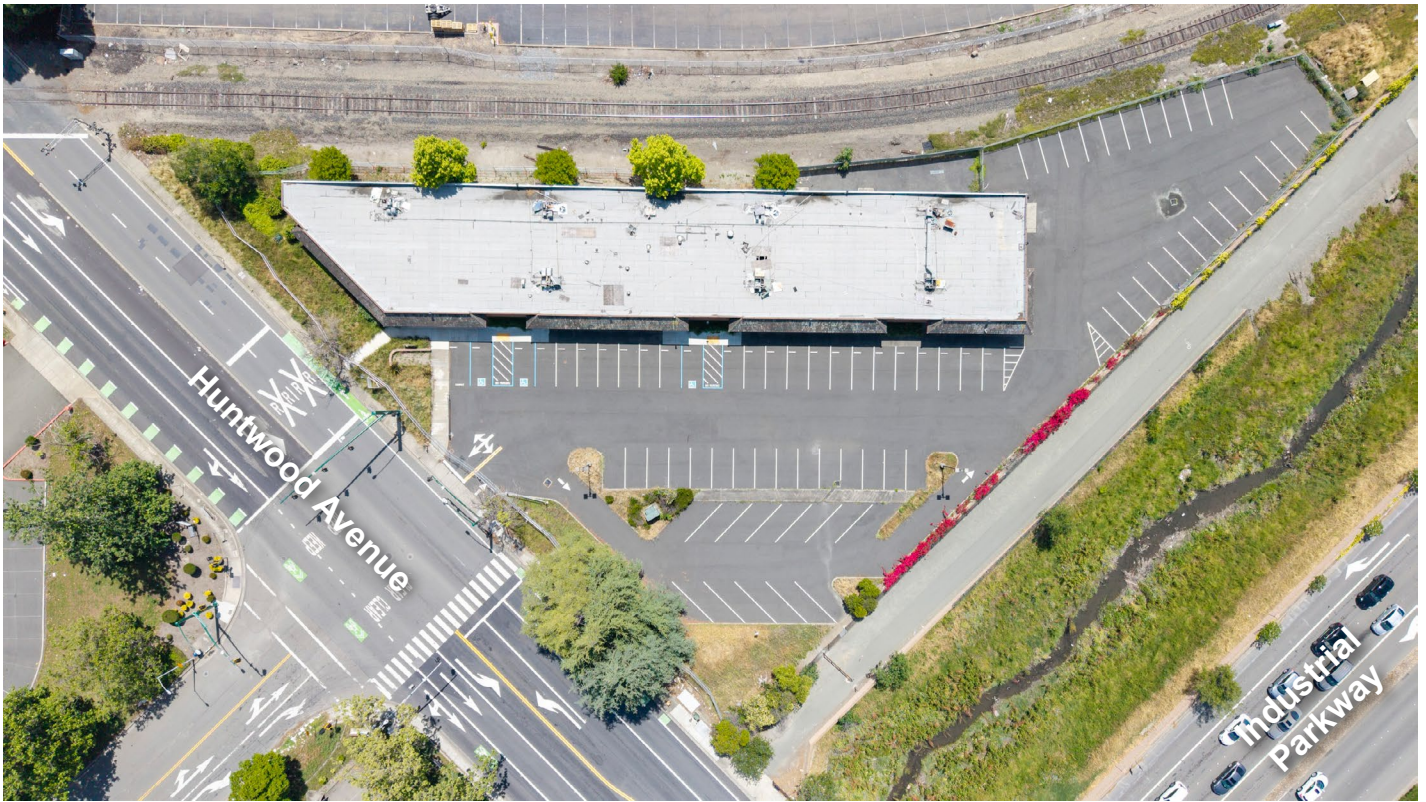
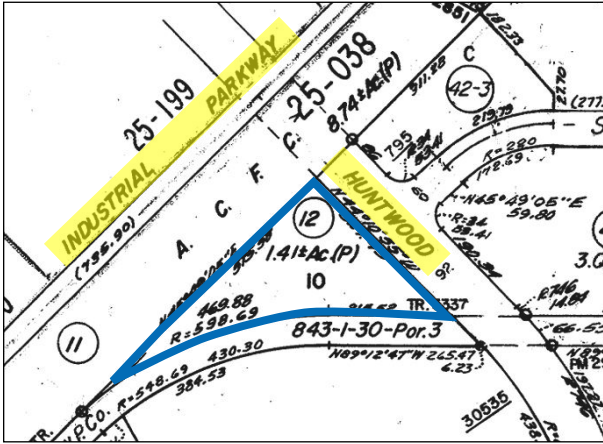
Spencer Jenkins

Associate Director
t 720-272-5175
spencer.jenkins@nrmk.com
CA RE LIC #02029699

nrmk.com

NEWMARK

The distributor of this communication is performing acts for which a real estate license is required. The information contained herein has been obtained from sources deemed reliable but has not been verified and no guarantee, warranty or representation, either express or implied, is made with respect to such information. Terms of sale or lease and availability are subject to change or withdrawal without notice. 1/25 - 8213478655



For information, please contact:

Paul Mueller, SIOR
 Senior Managing Director
 t 510-220-3341
 paul.mueller@nmrk.com
 CA RE LIC #00832933

Spencer Jenkins
 Associate Director
 t 720-272-5175
 spencer.jenkins@nmrk.com
 CA RE LIC #02029699

nmrk.com

NEWMARK

The distributor of this communication is performing acts for which a real estate license is required. The information contained herein has been obtained from sources deemed reliable but has not been verified and no guarantee, warranty or representation, either express or implied, is made with respect to such information. Terms of sale or lease and availability are subject to change or withdrawal without notice. 1/25 - 8213478655