

801 Warrenville Road

Suite 600, 605 & 620

801 Warrenville Road, Lisle, IL 60532

# HAMILTON PARTNERS

www.hamiltonpartners.com



## DETAILS

**Square Feet:** 12,800 S.F.

**Net Rent:** \$15.00/S.F.

**OP. Expense:** \$7.96/S.F.

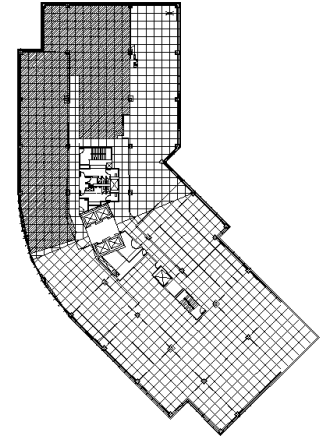
**Tax:** \$2.86/S.F.

**Gross Rent:** \$25.82/S.F.

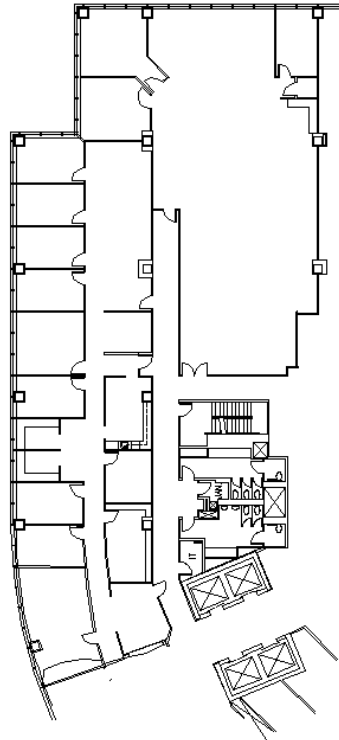
## SUITE FEATURES

- Largest available space at 801
- Beautiful pond views
- Efficient layout
- 20 private offices
- Conference Room
- Storage room/IT room
- Work/copy area
- 3 kitchens within premises

## SIXTH FLOOR PLAN



## SPACE PLAN



## CONTACT INFORMATION

**Philip Sheridan**

✉ [phil\\_sheridan@hpre.com](mailto:phil_sheridan@hpre.com)

P 630-719-5567

F 630-719-5570

**David Andrews**

✉ [da@hpre.com](mailto:da@hpre.com)

P 630-719-5565

F 630-719-5570