

Colliers

Your Name Here

8305

1601

For Lease | +/- 3,450 SF

Turnkey Medical Office
Ready to Occupy

8305 Brimhall Rd, Suite 1601 | Bakersfield, CA

Jason Alexander

Senior Vice President | Principal
License No. 01360995
+1 661 631 3818
jason.alexander@colliers.com

David Williams, SIOR

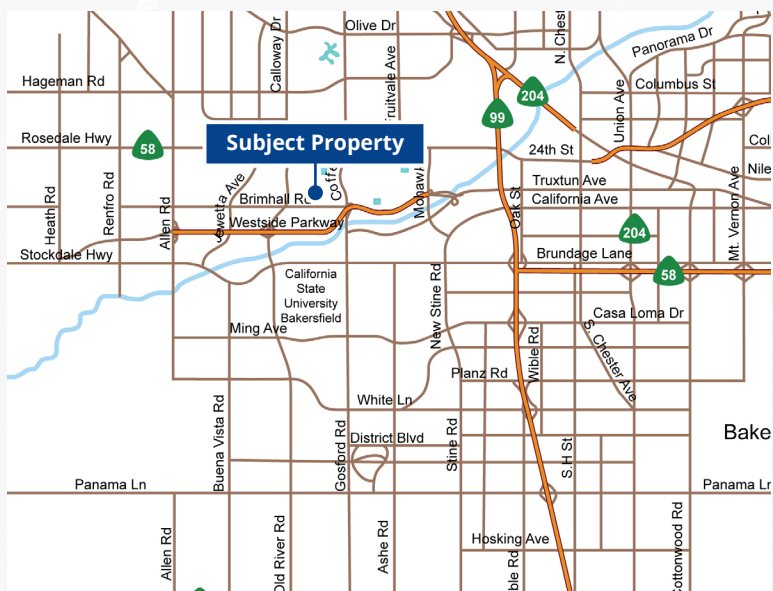
Senior Vice President | Principal
License No. 00855489
+1 661 631 3816
david.a.williams@colliers.com

Colliers International

10000 Stockdale Hwy, Suite 102
Bakersfield, CA 93311
+1 661 631 3800
www.colliers.com/bakersfield



Vicinity Map



Property Information

Crown Pointe is one of the newest medical and professional office developments in northwest Bakersfield. The project consists of 20 buildings totaling 195,000 square feet. The development is located on Brimhall Road just west of Coffee Road near the Westside Parkway on/off ramps and offers excellent access to the entire city.

- Turnkey space ready for occupancy
- Exterior suite entrance
- Suite is individually metered for gas and electricity
- Easy access to Westside Parkway
- Building signage available
- Good synergy with neighboring tenants
- Great northwest Bakersfield location

Availability

8305 - Building 1600 - Suite 1601 Approx. 3,540 SF
Fully improved medical suite

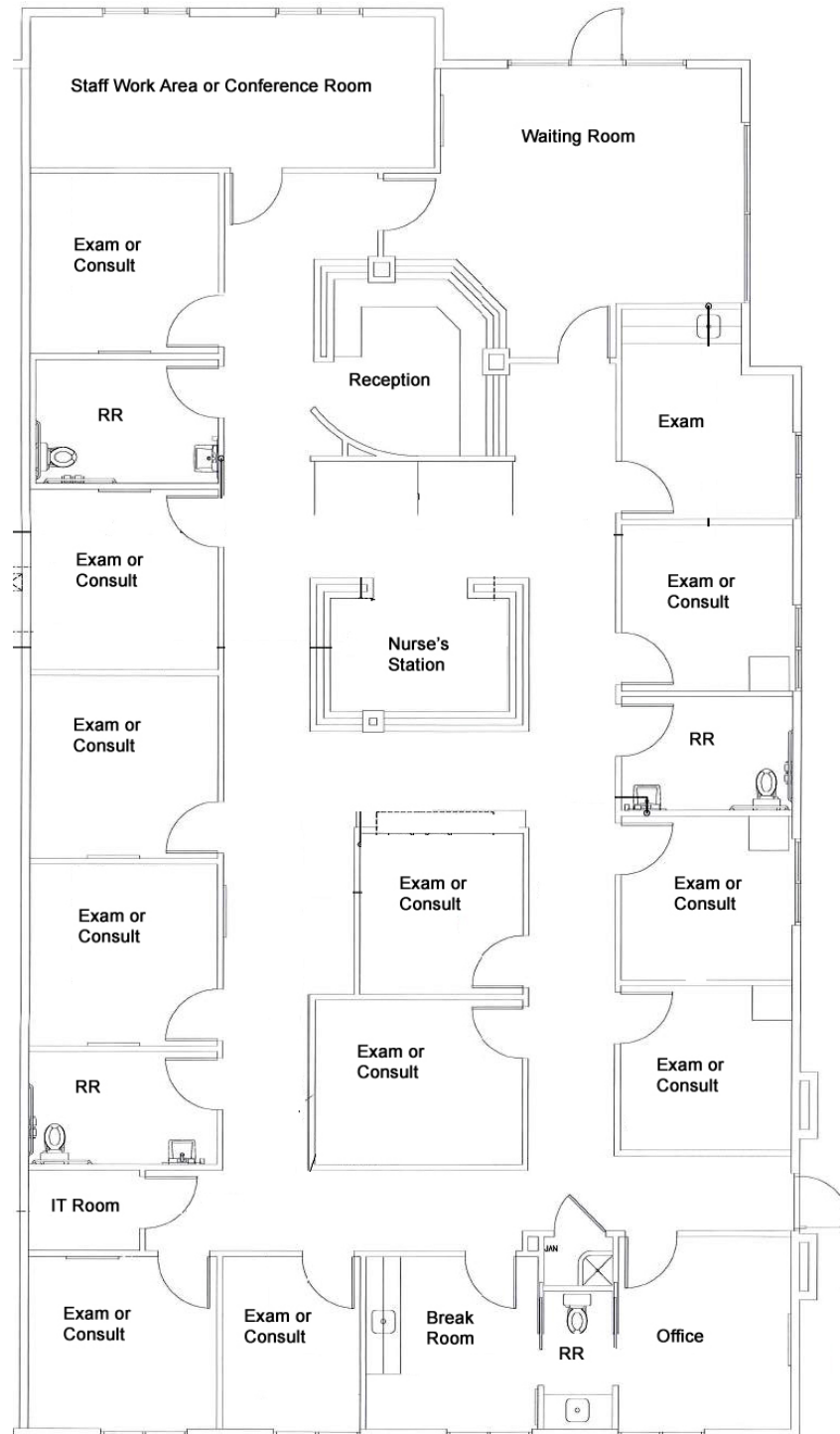
Lease Rate

\$2.75 per sf, per month, NNN

This document/email has been prepared by Colliers for advertising and general information only. Colliers makes no guarantees, representations or warranties of any kind, expressed or implied, regarding the information including, but not limited to, warranties of content, accuracy and reliability. Any interested party should undertake their own inquiries as to the accuracy of the information. Colliers excludes unequivocally all inferred or implied terms, conditions and warranties arising out of this document and excludes all liability for loss and damages arising there from. This publication is the copyrighted property of Colliers and /or its licensor(s). © 2025. All rights reserved. This communication is not intended to cause or induce breach of an existing listing agreement

Floor Plan

*8305 Brimhall Road
Building 1600, Suite 1601
Turnkey Medical Office -
Ready to Occupy
3,540 SF*



Site Plan



Aerial

