

For More Information:

CLAY SHORT

662.231.4262

cshort@trirealestate.net



Office Building For Lease

SPANISH VILLAGE OFFICE PARK



324 Troy Street
Tupelo, MS 38804
662.842.8283

www.trirealestate.net



SPANISH VILLAGE OFFICE COMPLEX



OFFERING SUMMARY

Available SF:	Various Sizes
Lease Rate:	\$16.00 SF/yr (Gross)
Lot Size:	12 Acres
Year Built:	1997
Building Size:	128,000 SF

PROPERTY OVERVIEW

Various spaces ranging from 625 SF to 4600 SF to 12,000 SF available in this multi-building professional complex which is stabilized by its strong tenant mix. The roster includes professionals from legal & financial industries medical, engineering, governmental, and corporate offices. This space is modernized, and well-designed.

LOCATION OVERVIEW

Located on South Thomas Street in the West Main Street business district. Neighbors include a mixed use of office, medical, retail and restaurants. A full-service post office, major banks, many restaurants and diverse retail shopping can all be found within 1 mile of this property.

For More Information:

CLAY SHORT
662.842.8283
cshort@trirealestate.net



SPANISH VILLAGE OFFICE COMPLEX



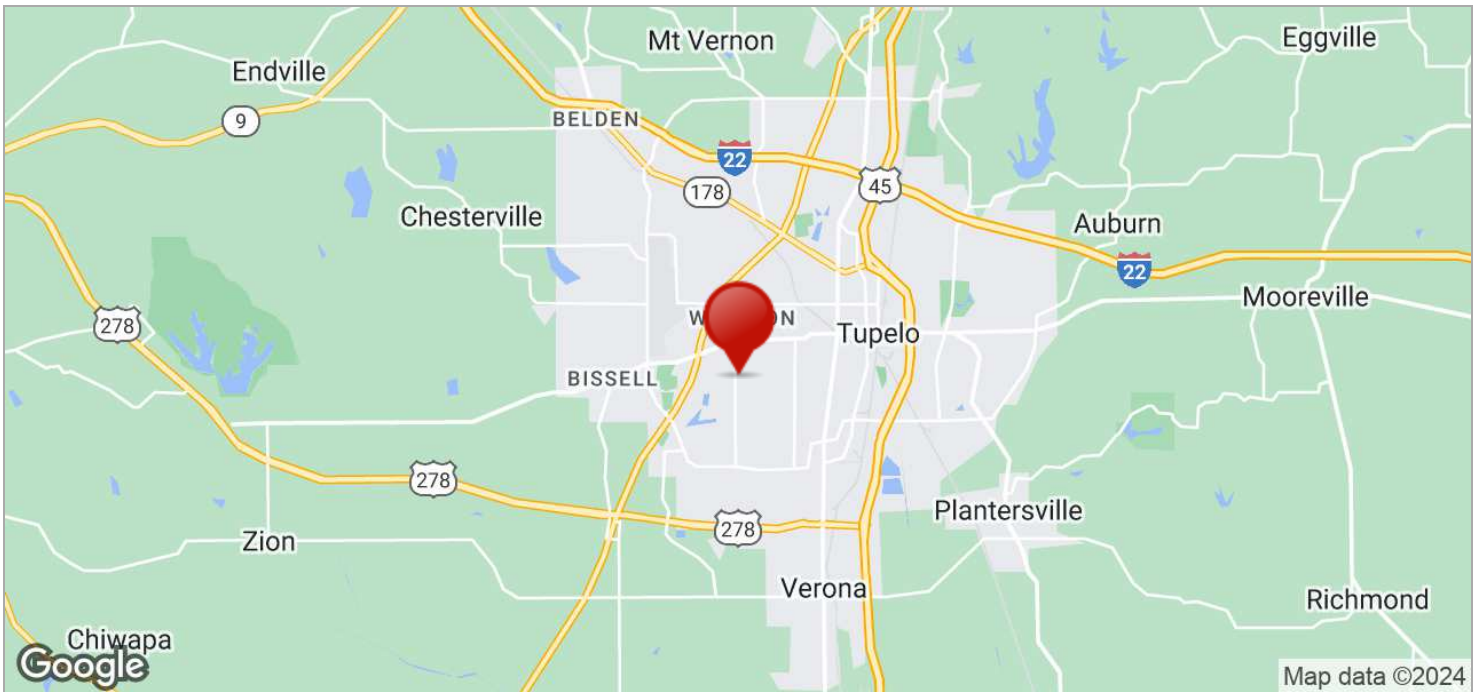
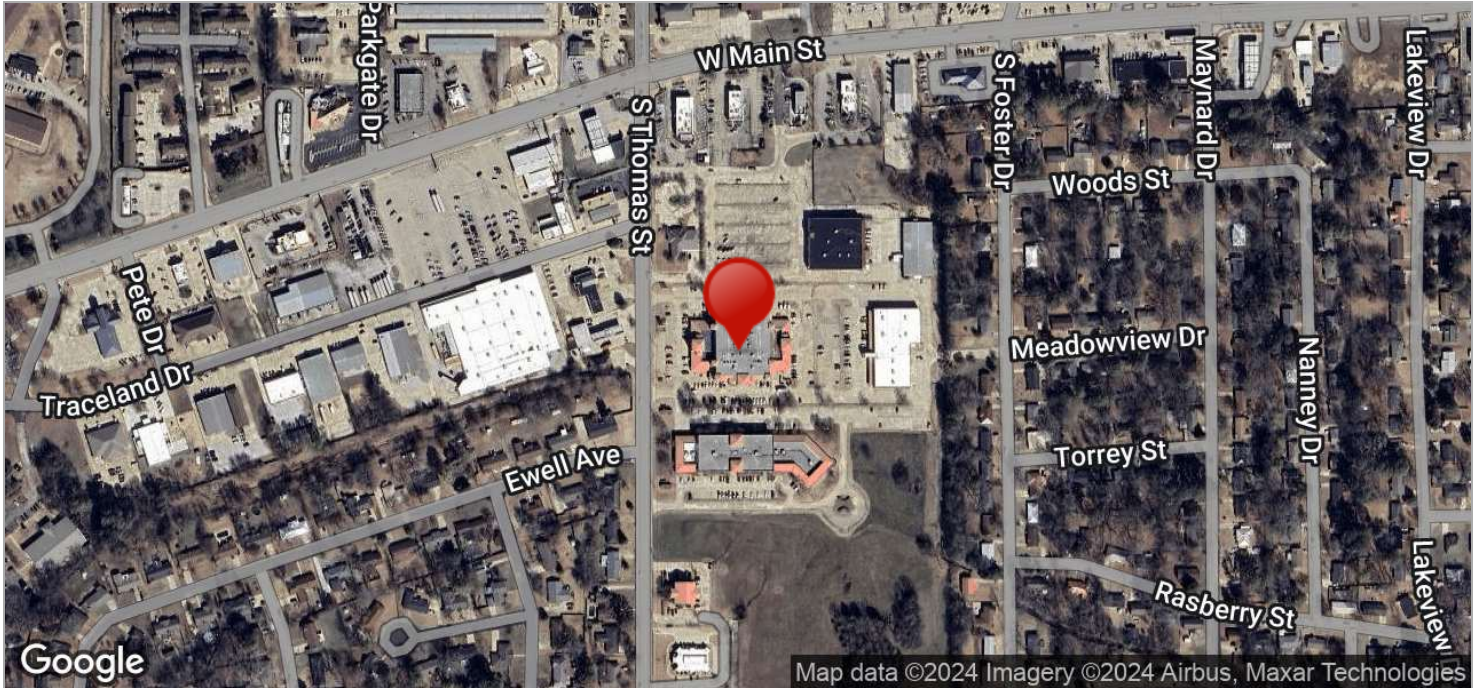
For More Information:

CLAY SHORT

662.842.8283

cshort@trirealestate.net

SPANISH VILLAGE OFFICE COMPLEX



For More Information:

CLAY SHORT

662.842.8283

cshort@trirealestate.net