



# Multi-Use Building for Sale

**7200 WYANDOTTE STREET  
KANSAS CITY, MISSOURI**

## Property Highlights

- 10,080 (±) sf building
- 7,440 sf secured, 10-foot fenced lot/yard (with drive-in loading/south side)
- Dedicated parking lot can accommodate 18 parking stalls on site
- Fully conditioned building, new partial HVAC in 2021/2022
- M1-5 zoning
- Currently used as a canine care resort, although building allows for a variety of uses
- New TPO roof in 2021, transferrable warranty available
- Sale price \$1,895,000

*For information, please contact:*

**John M. Hoefer, SIOR**  
*Senior Managing Director, Principal*  
t 816-268-4248  
jhoefernzimmer.com

1220 Washington Street, Suite 300  
Kansas City, MO 64105

[nrmkzimmer.com](http://nrmkzimmer.com)



**NEWMARK**  
ZIMMER

The information contained herein has been obtained from sources deemed reliable but has not been verified and no guarantee, warranty or representation, either express or implied, is made with respect to such information. Terms of sale or lease and availability are subject to change or withdrawal without notice.

7200 WYANDOTTE STREET, KANSAS CITY, MISSOURI

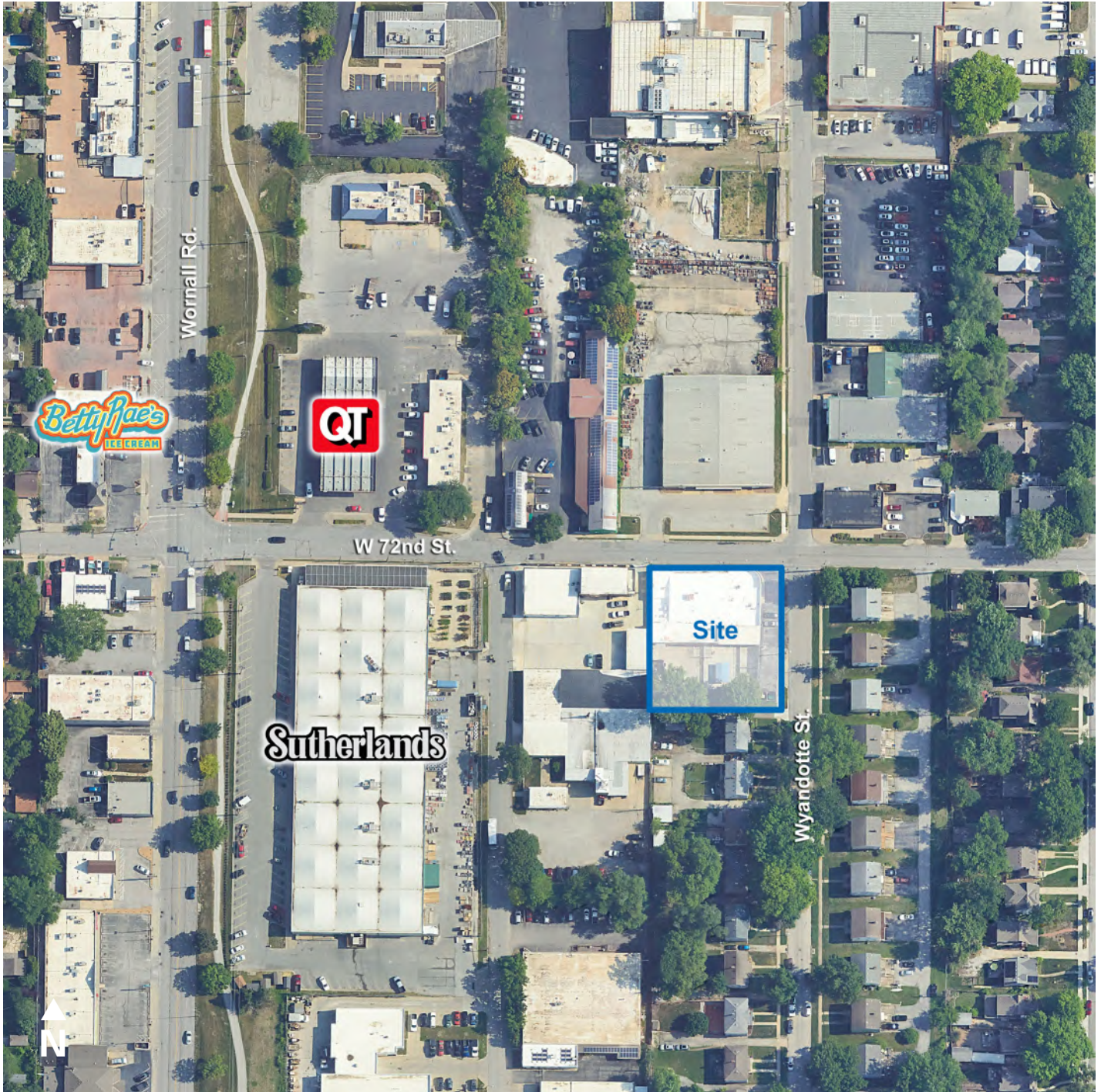


CONTACT

**John M. Hoefler, SIOR**  
*Senior Managing Director, Principal*  
t 816-268-4248  
jhoefler@nzimmer.com  
[nmrkzimmer.com](http://nmrkzimmer.com)

**NEWMARK**  
ZIMMER

7200 WYANDOTTE STREET, KANSAS CITY, MISSOURI

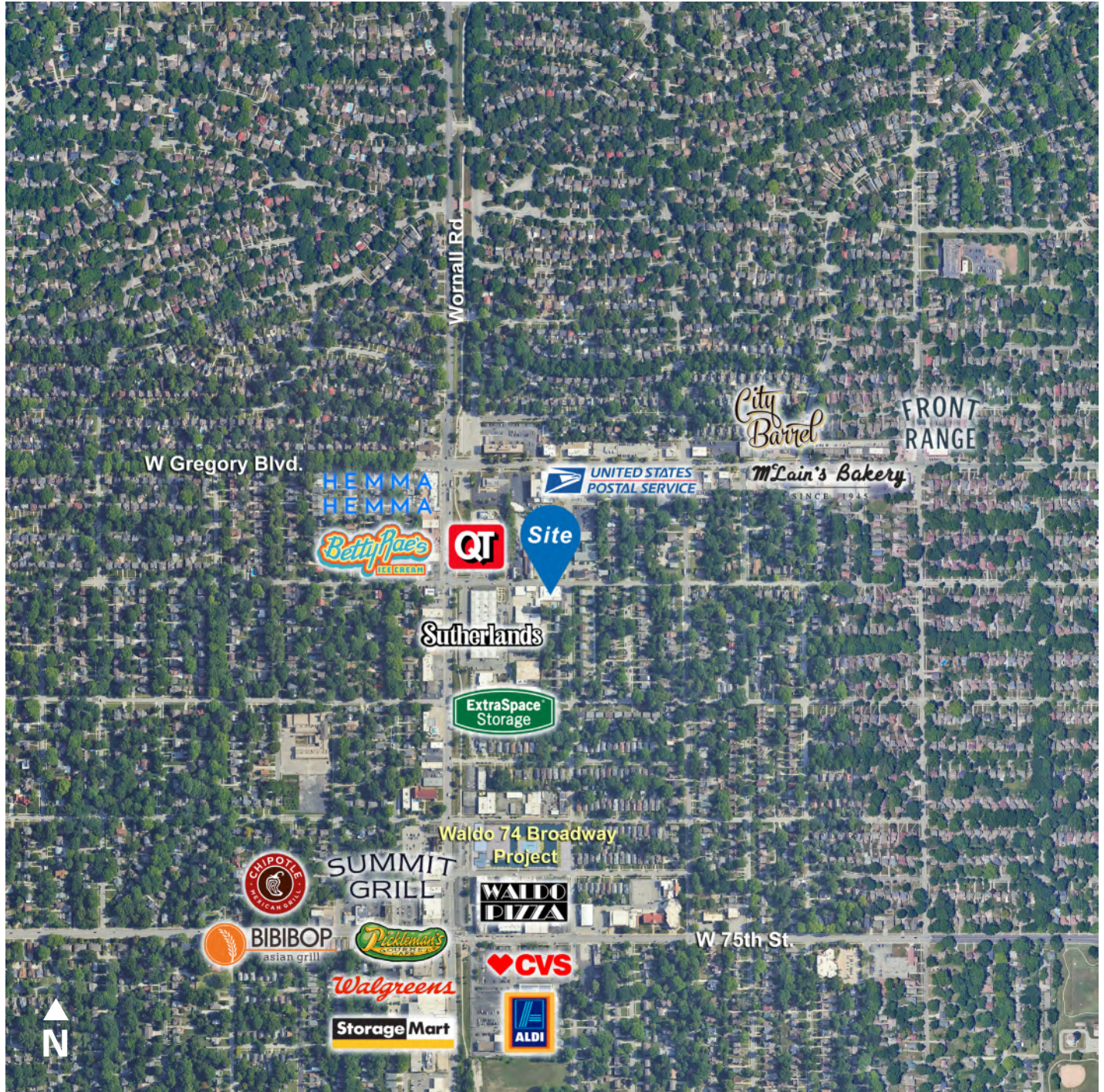


CONTACT

**John M. Hoefler, SIOR**  
*Senior Managing Director, Principal*  
t 816-268-4248  
jhoefler@nzimmer.com  
[nmrkzimmer.com](http://nmrkzimmer.com)

**NEWMARK**  
ZIMMER

7200 WYANDOTTE STREET, KANSAS CITY, MISSOURI



CONTACT

**John M. Hoefler, SIOR**  
*Senior Managing Director, Principal*  
t 816-268-4248  
jhoefler@nzimmer.com  
[nmrkzimmer.com](http://nmrkzimmer.com)

