



COMMERCIAL
ASSET GROUP



\$5,000
BROKER BONUS
*CONTACT BROKER
FOR DETAILS

the butter end

310.393.2929

laseraway.net

310.393.4844
thebutterend.com



CLICK HERE FOR
PROPERTY VIDEO

PRIME SANTA MONICA RETAIL SPACE FOR LEASE

**510 WILSHIRE BOULEVARD
SANTA MONICA, CA 90401**

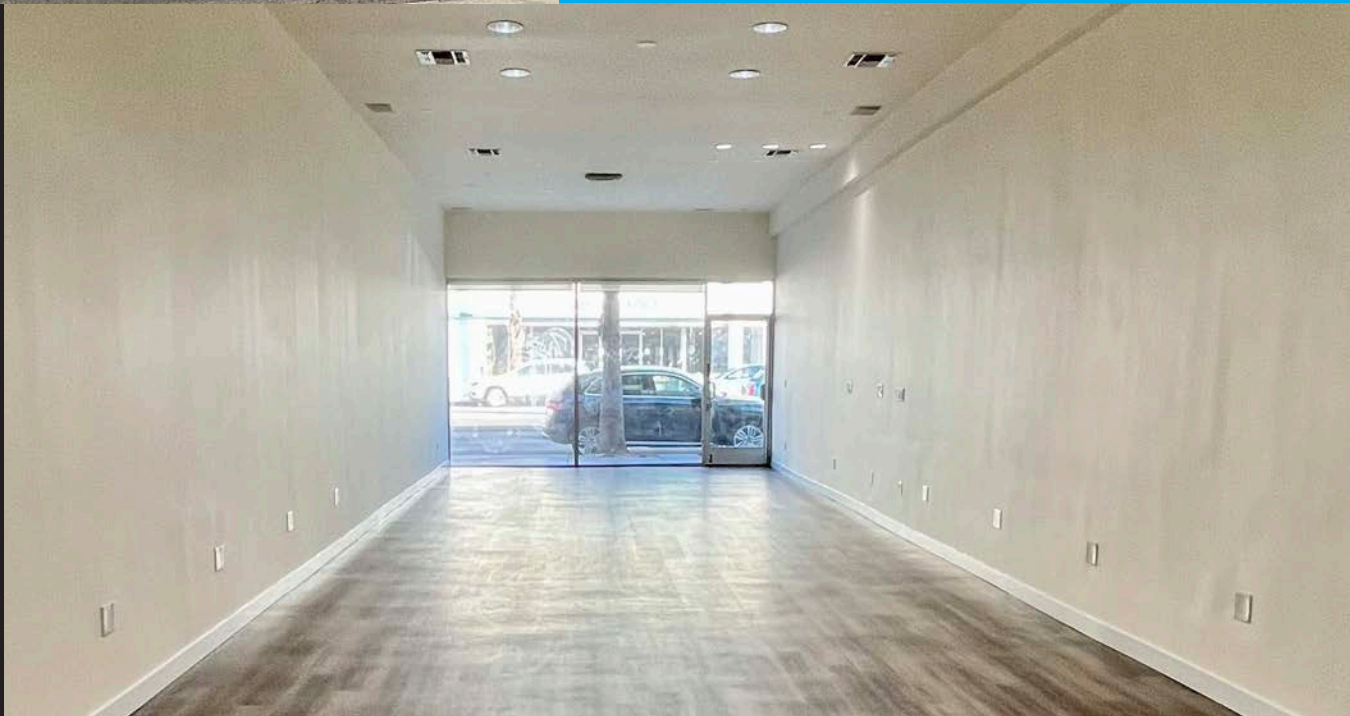


- Former hair salon
- In close proximity to a variety of retailers and restaurants on 3rd Street Promenade
- Highly visible signage opportunity
- Strong tenant mix - Laser Away, Vanilla Bake Shop, CVS
- Offering convenient access to the 10 Freeway and Pacific Coast Highway

LEASE RATE
CALL FOR FURTHER
INFORMATION

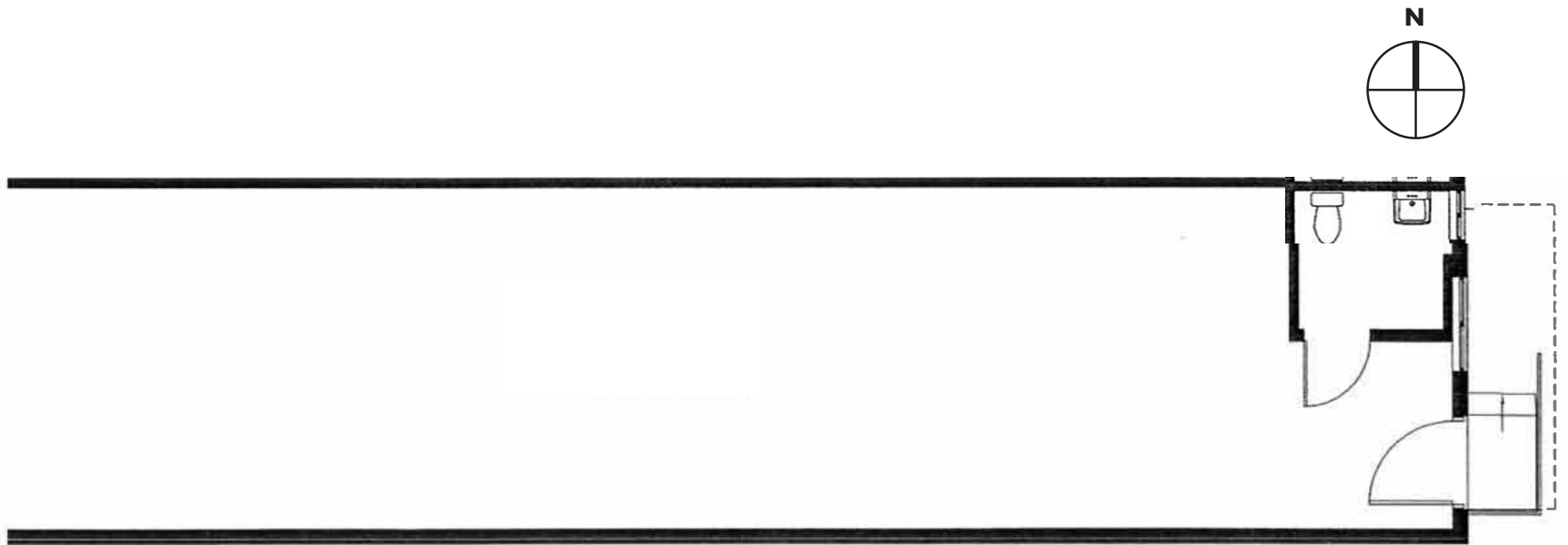
SPACE SIZE
±1,252 SF

AVAILABLE
IMMEDIATELY

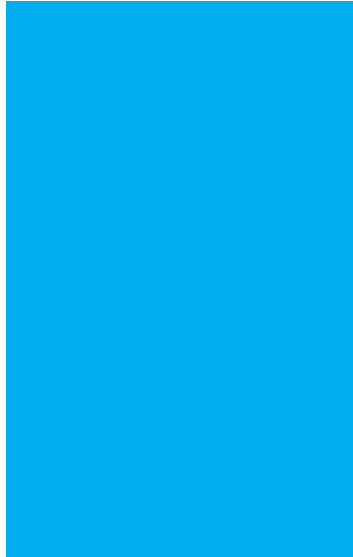
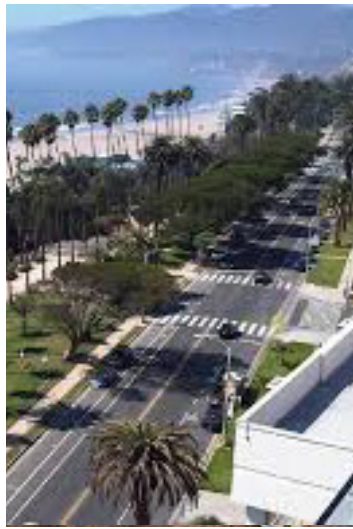
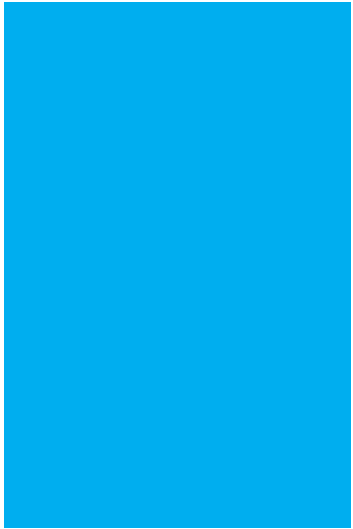
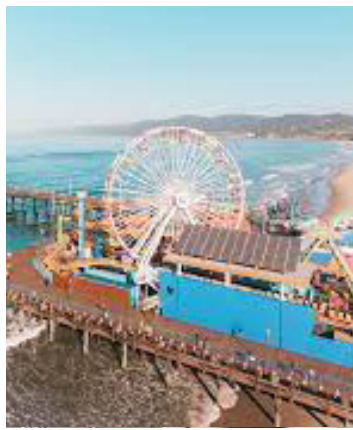
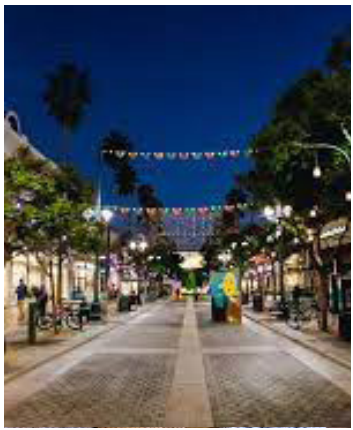




ADDITIONAL PHOTOS



FLOOR PLAN



AVERAGE HOME PRICE

± \$1,799,500

AVERAGE HOUSEHOLD INCOME

± \$119,008

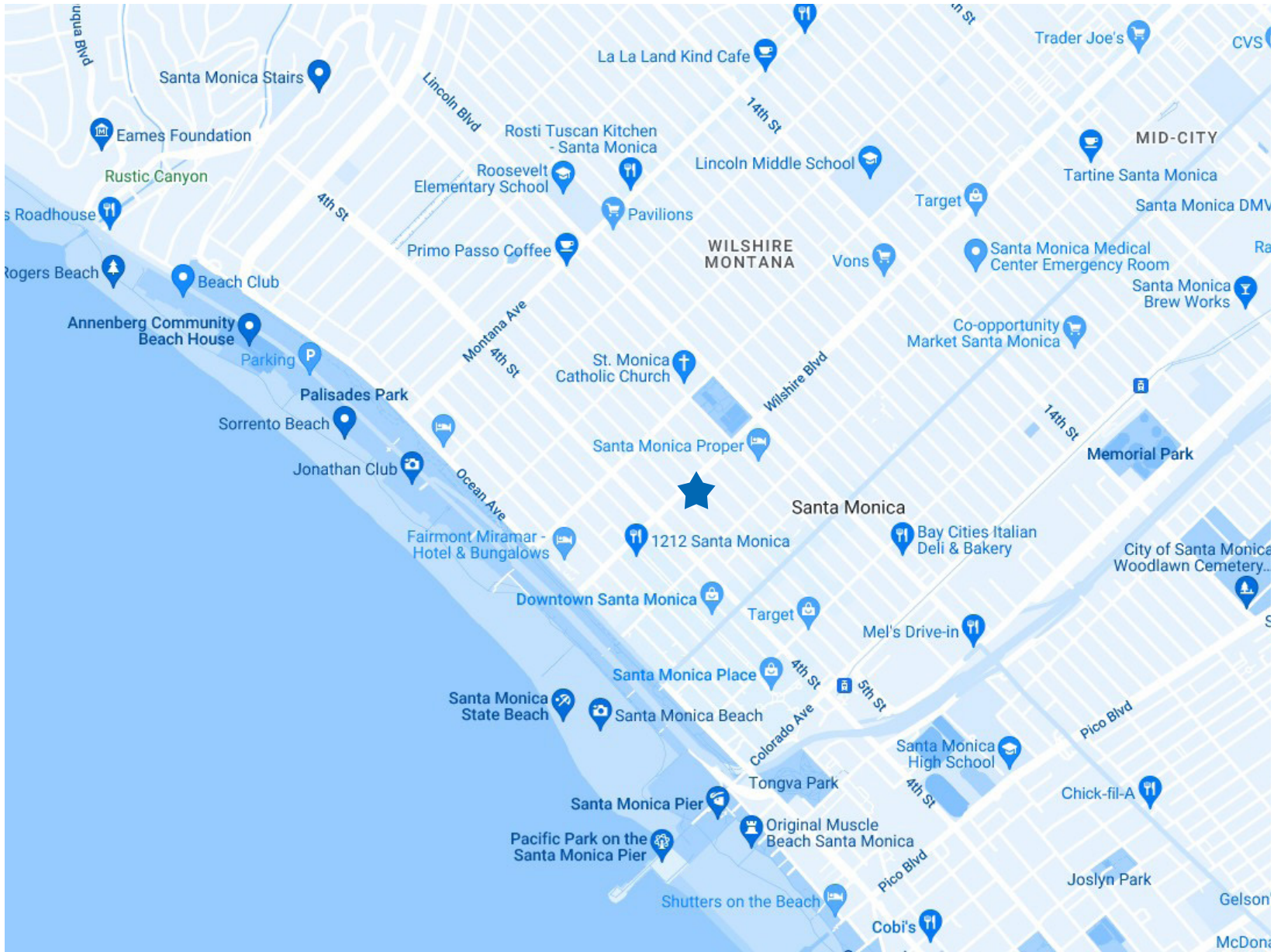
MEDIAN AGE

± 40.13

POPULATION

± 92,478

SANTA MONICA DEMOGRAPHICS



MAP



DAVID ICKOVICS

COMMERCIAL ASSET GROUP
PRINCIPAL
P 310.272.7380
E DJI@CAGRE.COM
LIC. 01315424

TIFFANY LOTZ

COMMERCIAL ASSET GROUP
DIRECTOR
P 310.272.7385
E TIFFANY@CAGRE.COM
LIC. 01879870

RAFAEL PADILLA

PAR COMMERCIAL BROKERAGE
PRINCIPAL
P 310.395.2663 EXT. 102
E RAFAEL@PARCOMMERCIAL.COM
LIC. 00960188

ARTHUR L PETER

PAR COMMERCIAL BROKERAGE
PRINCIPAL
P 310.395.2663 EXT. 101
ARTHUR@PARCOMMERCIAL.COM
LIC. 01068613

COMMERCIAL ASSET GROUP

190 N. CANON DRIVE, STE 300
BEVERLY HILLS, CA 90210
P 310.275.8222 F 310.275.8223
WWW.CAGRE.COM LIC. 01876070



**COMMERCIAL
ASSET GROUP**

