



PEGASUS GROUP

100 Sun Ave., Suite 100, Albuquerque, NM 87109
(505) 346-0022 www.pegasusretail.com

XTEAM

RETAIL ADVISORS

SIX ACRE SITE GROWING TRADE AREA

6700 CERRILLOS RD, SANTA FE, NM 87507



PROPERTY HIGHLIGHTS:

- 6 ACRE SITE READY FOR DEVELOPMENT!
- ESTABLISHED A GROWING TRADE AREA
- CAPTURES GOING TO WORK TRAFFIC AND PEOPLE COMING IN FROM ALBUQUERQUE
- FULL ACCESS SITE
- BTS AND GL OPTIONS AVAILABLE
- COMPETITIVE RATES
- HIGH BARRIER TO ENTRY TRADE AREA
- IDEAL FOR QSR, COFFEE, MEDICAL,
- CAR WASH, SOFT GOODS AND MORE!

AREA RETAILERS:



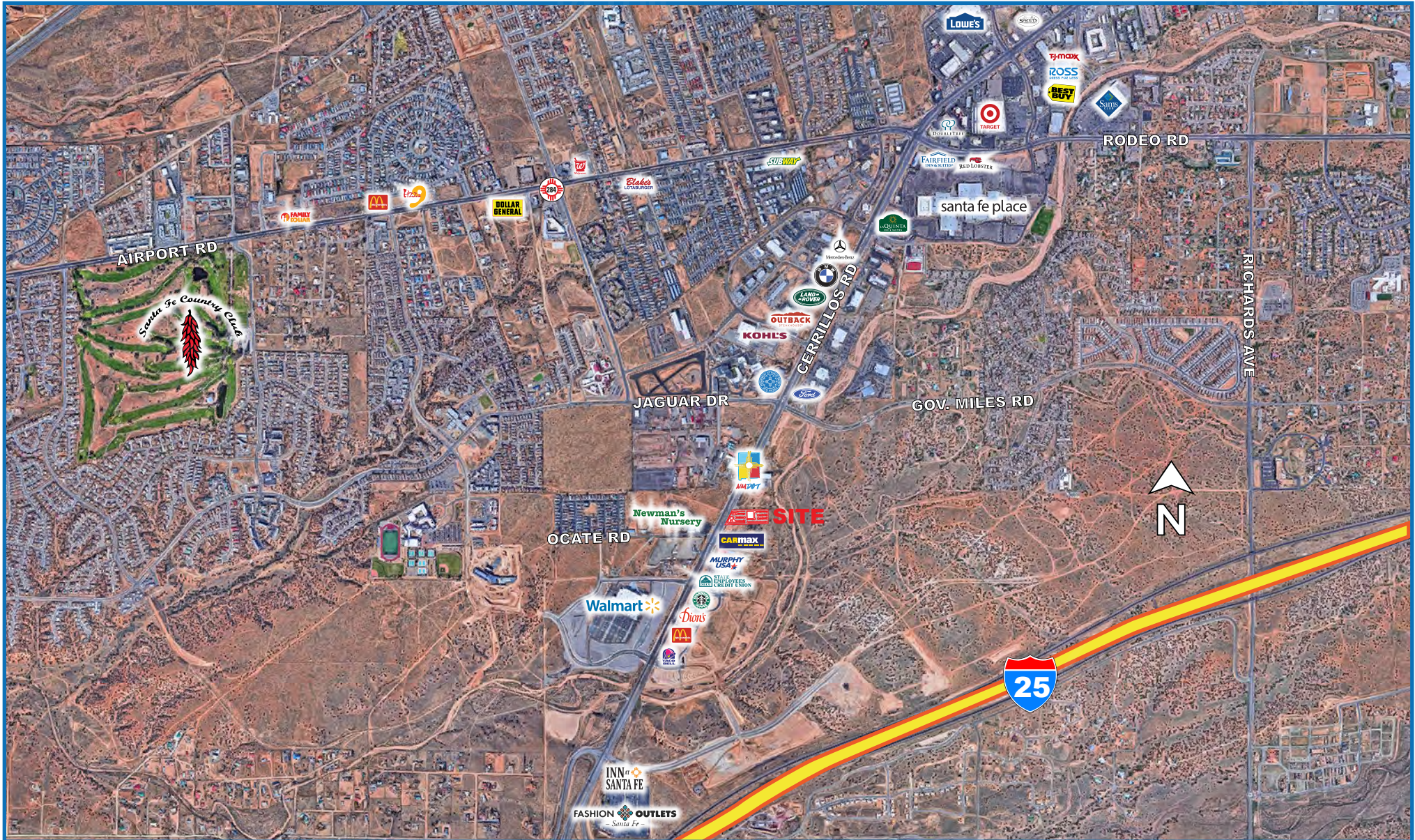


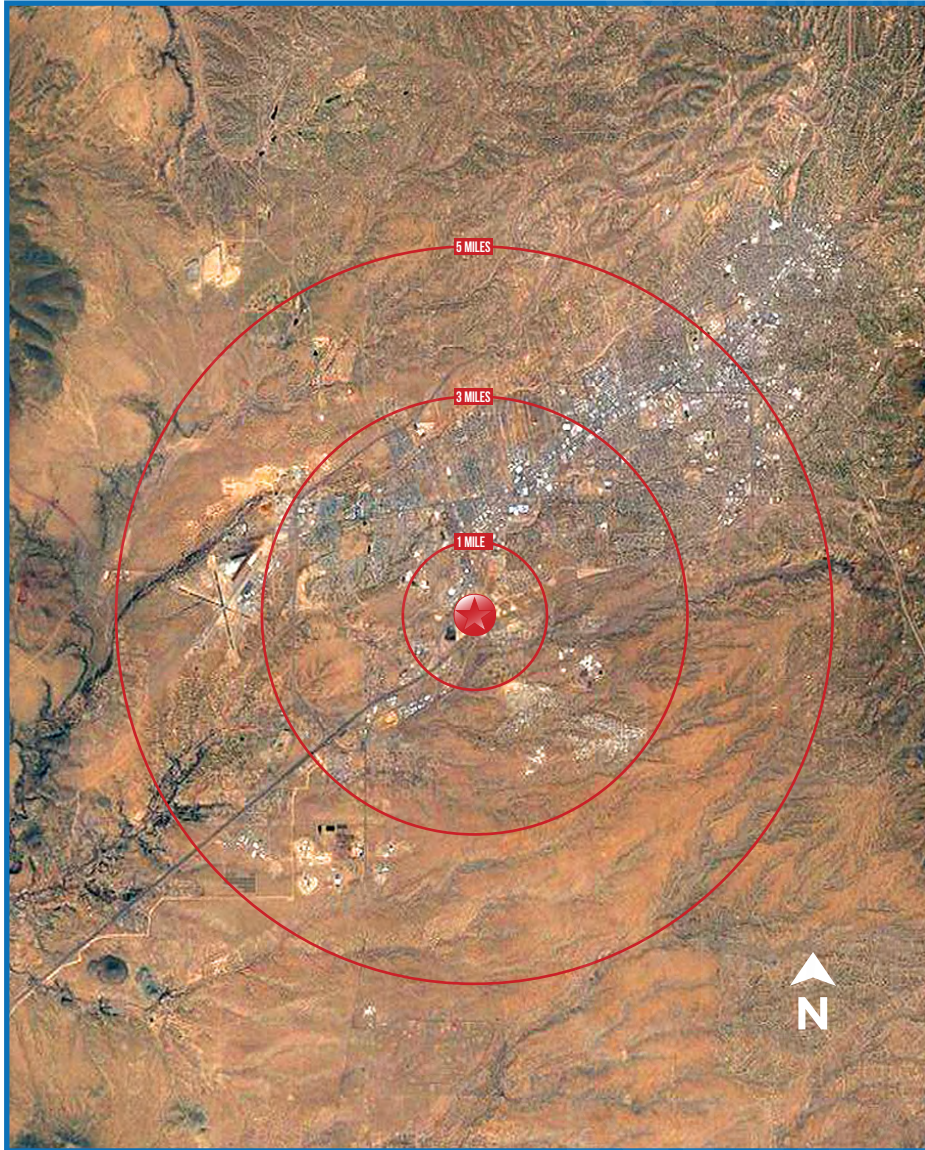


PEGASUS GROUP
 100 Sun Ave., Suite 100, Albuquerque, NM 87109
 (505) 346-0022 www.pegasusretail.com

XTEAM
 RETAIL ADVISORS

SIX ACRE SITE
GROWING TRADE AREA
 6700 CERRILLOS RD, SANTA FE, NM 87507





6700 CERRILLOS RD SANTA FE, NM 87507		1 mi radius	3 mi radius	5 mi radius
POPULATION	2021 Estimated Population	5,868	49,433	77,908
	2026 Projected Population	6,274	51,139	79,916
	2010 Census Population	4,770	44,442	71,962
	2000 Census Population	4,187	34,799	60,116
	Projected Annual Growth 2021 to 2026	1.4%	0.7%	0.5%
	Historical Annual Growth 2000 to 2021	1.9%	2.0%	1.4%
HOUSEHOLDS	2021 Median Age	35.0	38.6	41.3
	2021 Estimated Households	2,171	19,206	31,747
	2026 Projected Households	2,392	20,217	50,355
	2010 Census Households	1,653	16,828	28,669
	2010 Census Households	1,384	12,680	22,682
	Projected Annual Growth 2021 to 2026	2.0%	1.1%	0.8%
RACIAL AND ETHNICITY	Historical Annual Growth 2000 to 2021	2.7%	2.5%	1.9%
	2021 Estimated White	62.5%	68.4%	71.1%
	2021 Estimated Black or African American	1.9%	1.6%	1.7%
	2021 Estimated Asian or Pacific Islander	2.3%	1.8%	1.9%
	2021 Estimated American Indian or Native Alaskan	2.2%	2.4%	2.3%
	2021 Estimated Other Races	31.1%	25.8%	23.0%
INCOME	2021 Estimated Hispanic	70.1%	69.0%	63.5%
	2021 Estimated Average Household Income	\$68,071	\$75,344	\$78,831
	2021 Estimated Median Household Income	\$61,388	\$61,026	\$63,171
	2021 Estimated Per Capita Income	\$25,283	\$29,378	\$32,400
EDUCATION (AGE 25+)	2021 Estimated Elementary (Grade Level 0 to 8)	6.2%	9.8%	8.1%
	2021 Estimated Some High School (Grade Level 9 to 11)	4.8%	6.2%	6.2%
	2021 Estimated High School Graduate	30.3%	28.1%	25.4%
	2021 Estimated Some College	18.0%	18.6%	18.9%
	2021 Estimated Associates Degree Only	7.6%	6.8%	6.7%
	2021 Estimated Bachelors Degree Only	20.9%	16.5%	18.2%
BUSINESS	2021 Estimated Graduate Degree	12.2%	13.8%	16.5%
	2021 Estimated Total Businesses	351	1,644	3,855
	2021 Estimated Total Employees	5,880	18,931	39,734
	2021 Estimated Employee Population per Business	16.8	11.5	10.3
	2021 Estimated Residential Population per Business	16.7	30.1	20.2

THIS INFORMATION HAS BEEN OBTAINED FROM SOURCES BELIEVED RELIABLE. WE HAVE NOT VERIFIED IT AND MAKE NO GUARANTEE, WARRANTY OR REPRESENTATION ABOUT IT. ANY PROJECTIONS, OPINIONS, ASSUMPTIONS OR ESTIMATES USED ARE FOR EXAMPLE ONLY AND DO NOT REPRESENT THE CURRENT OR FUTURE PERFORMANCE OF THE PROPERTY. YOU AND YOUR ADVISORS SHOULD CONDUCT A CAREFUL, INDEPENDENT INVESTIGATION OF THE PROPERTY TO DETERMINE TO YOUR SATISFACTION THE SUITABILITY OF THE PROPERTY FOR YOUR NEEDS.