

Executive suites for lease



40 CALHOUN STREET | CHARLESTON, SC

Ashley Jackrel, CCIM
Senior Vice President
+1 843 327 0124
ashley.jackrel@avisonyoung.com

**AVISON
YOUNG**

The offering

Executive Suites at Charleston Gateway Campus offer a professional setting with marble-lined lobby, multiple conference spaces, gracious ceiling height, beveled glass office enclosures and rich wood trim. These offices would be suitable for any professional services provider such as attorneys, financial advisors, insurance agents, accountants, and wealth managers.

The Campus located at the intersection of Calhoun and East Bay streets comprises a walkable complex occupied by office and service related businesses. The newest restaurant addition is Marbled & Fin, easily accessible to guests off of Washington Street and with convenient parking on site, on street, and in the aquarium garage. Within close proximity and comfortable walking distance are Beech Café, Ted's Butcher Block, Shiki and East Bay Deli. A back-up generator allows for uninterrupted service in the event of a power outage. The base of the Ravenel Bridge and I-26 are both conveniently accessible.

AVAILABILITIES

Suite	Square Footage	Asking monthly rate	Date Available
A	1,419	Leased	Leased
B	581	\$1,995	Now
C	314	\$1,100	Now
D	439	\$1,800	Now
E	432	\$1,450	Now
F	512	\$1,650	Now
G	424	\$1,375	Now
H	427	\$1,395	Now
I	429	\$1,425	Now
J	393	\$1,200	Now
K	468	\$1,550	Now
L	396	\$1,325	Now
N	2,442	\$4,700	Now

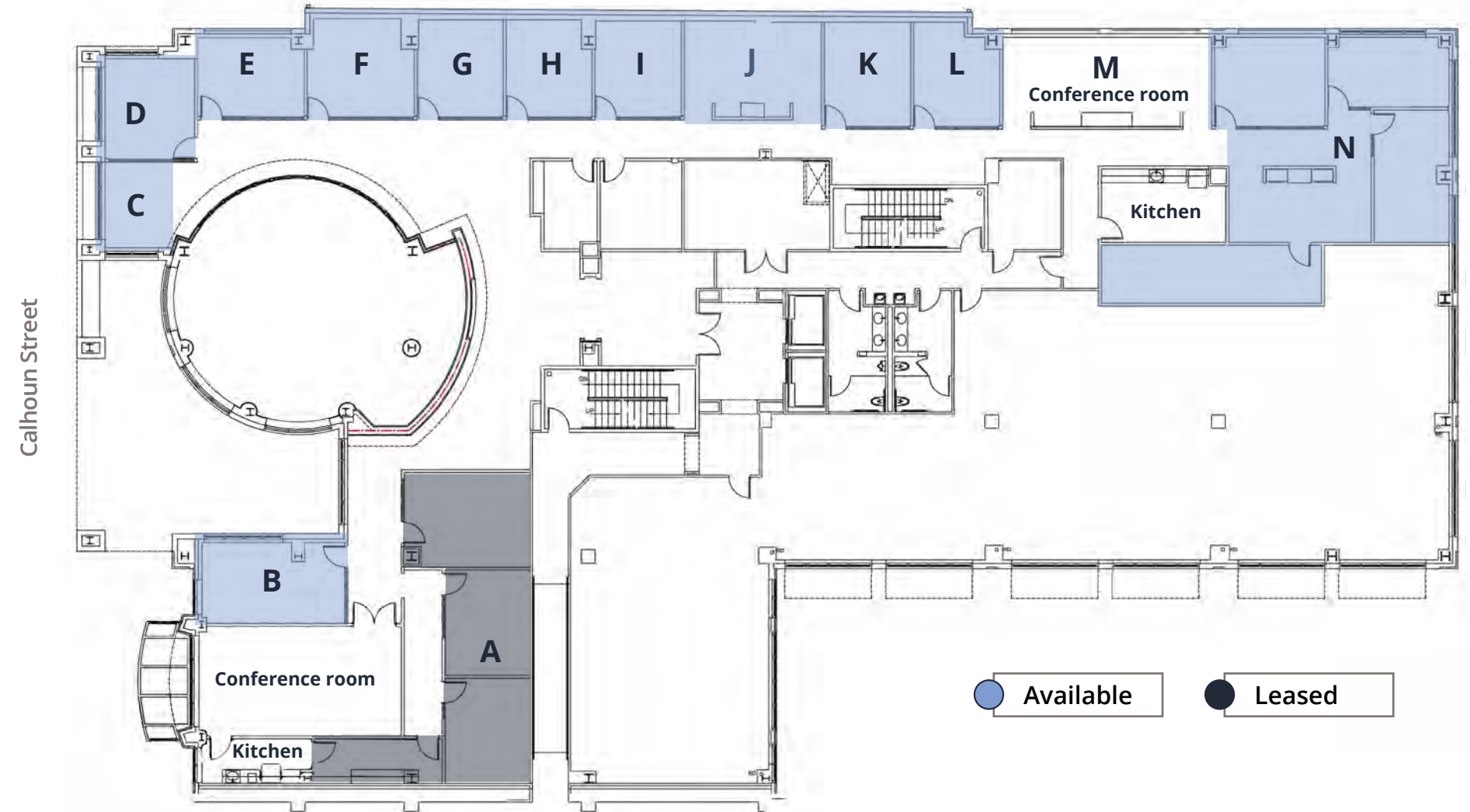
- C
- D
- E
- F
- I
- J
- K
- L
- N

● Desk included

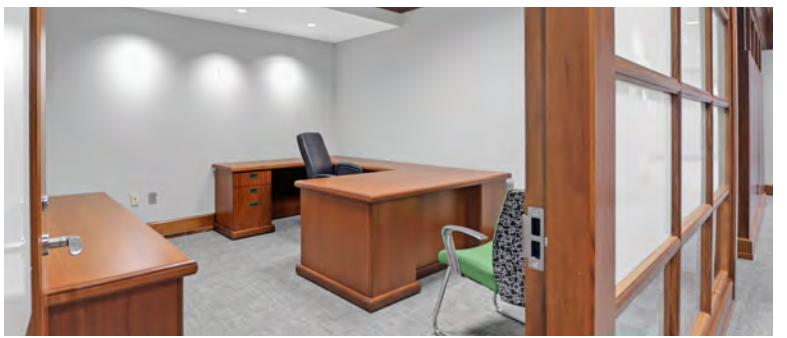
Click [here](#) to view our additional office availabilities at the Charleston Gateway Center

Floorplan

SUITE 250 - NORTH



Photos



Location overview



12 miles from the Charleston International Airport



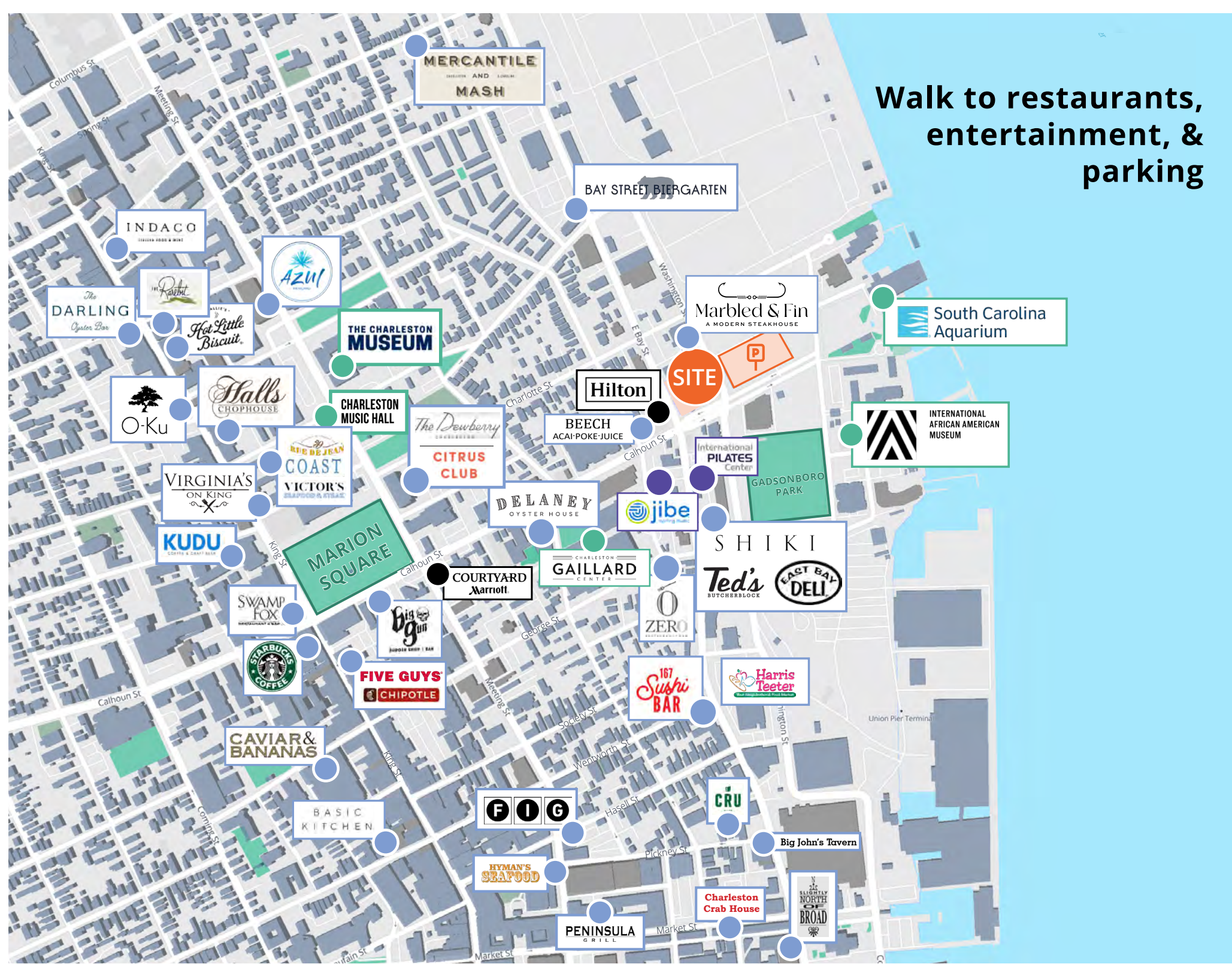
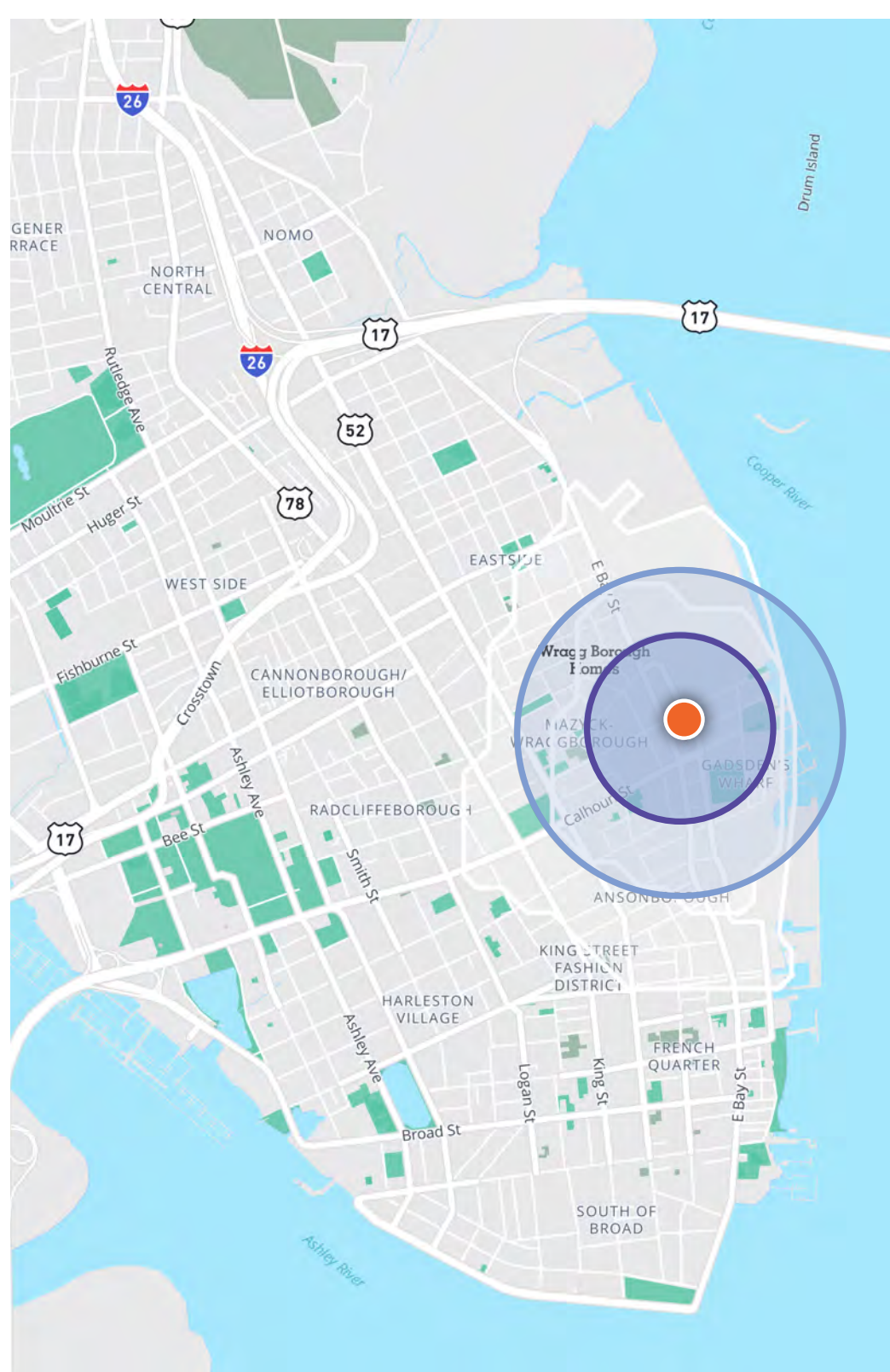
Near the Aquarium and the International African American Museum both providing cultural enhancement



Numerous daytime and evening amenities are a short walking distance



Located near six publicly accessible parks and a public library



Walk to restaurants, entertainment, & parking



For more information, contact:

Ashley Jackrel, CCIM
Senior Vice President
+1 843 327 0124
ashley.jackrel@avisonyoung.com

**AVISON
YOUNG**

Avison Young - South Carolina, Inc. | 40 Calhoun St, Suite 350, Charleston, SC 29401 | 843 725 7200