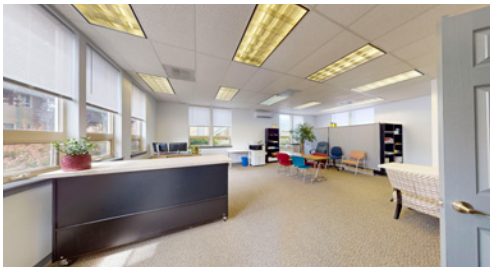




FLEXIBLE OFFICE OPTIONS IN A PROFESSIONAL OFFICE PARK



3721 GRIFFIN LN SE, OLYMPIA, WA | SOUTH SOUND OFFICE PARK

First—or second-floor office space with flexible layout options and ample on-site parking. Close to services and Interstate 5. Tenant responsible for utilities and interior maintenance.

FIRST FLOOR: Open layout with one private restroom and abundant natural light.

SECOND FLOOR: Two private offices, an open area, a kitchenette, three workstations, storage, and two private restrooms. (Not ADA accessible).

\$17.60 SF, MODIFIED GROSS

750 SF

CBA# 40614707

\$13.00 SF, MODIFIED GROSS

1,500 SF

CBA# 40607735



This information, while obtained from sources we deem reliable, is not guaranteed. It is provided without any representation, warranty or guarantee, expressed or implied as to its accuracy. Prospective buyer or tenant should conduct an independent investigation and verification of all matters deemed to be material, including, but not limited to, statements of income and expenses. Consult your attorney, accountant, or other professional advisor.

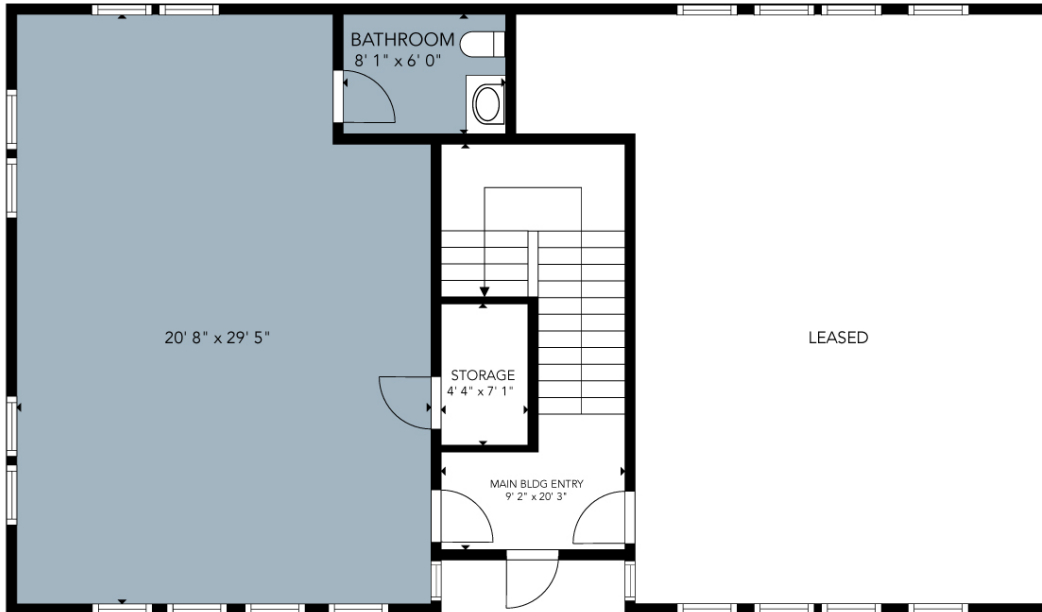
Jami Topping
BROKER
(360) 763-4995
jami@rantsgroup.com

Carolyn Graden, CCIM
MANAGING BROKER
(360) 763-4994
carolyn@rantsgroup.com

360-943-8060
RANTSGROUP.com

3721 GRIFFIN LN SE, OLYMPIA, WA | SOUTH SOUND OFFICE PARK

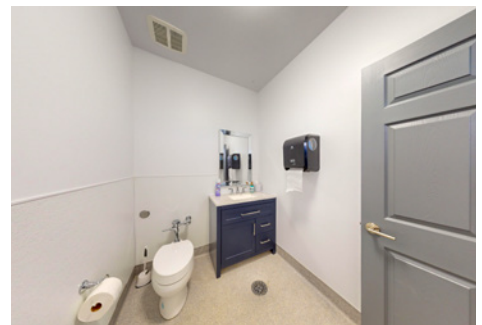
FIRST FLOOR: 750 SF



AVAILABLE



THIS FLOORPLAN IS NOT TO SCALE
SIZES AND DIMENSIONS ARE APPROXIMATE, ACTUAL MAY VARY.



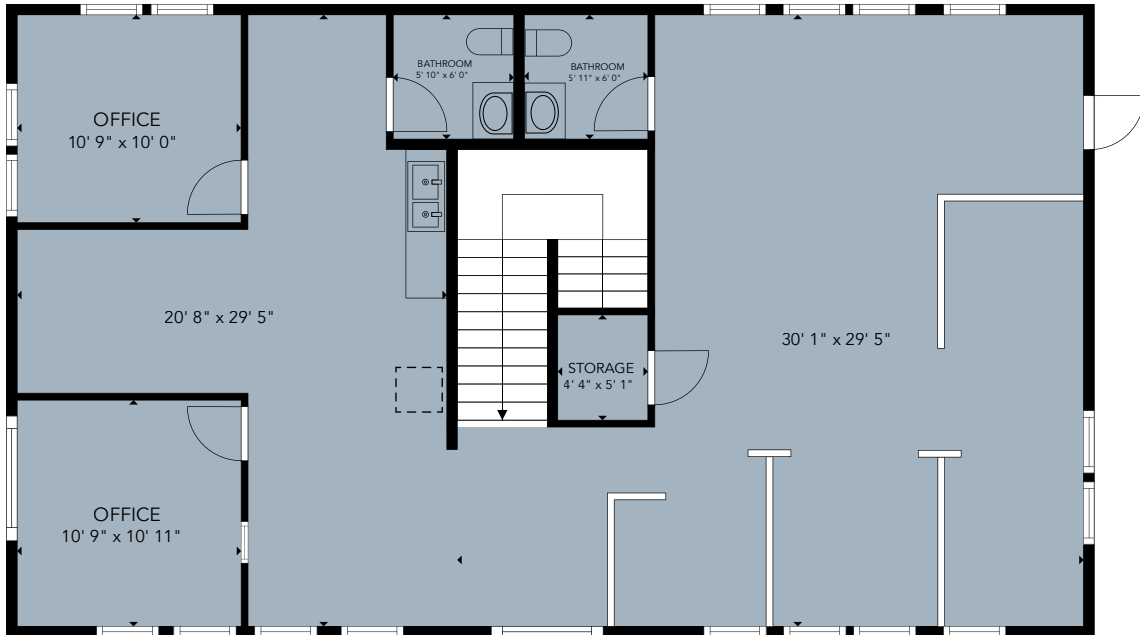
CONTACT

Jami Topping
BROKER
360-763-4995
jami@rantsgroup.com

Carolyn Graden, ccim
MANAGING BROKER
(360) 763-4994
carolyn@rantsgroup.com

3721 GRIFFIN LN SE, OLYMPIA, WA | SOUTH SOUND OFFICE PARK

SECOND FLOOR: 1,500 SF



AVAILABLE



THIS FLOORPLAN IS NOT TO SCALE
SIZES AND DIMENSIONS ARE APPROXIMATE, ACTUAL MAY VARY.



CONTACT

Jami Topping
BROKER
360-763-4995
jami@rantsgroup.com

Carolyn Graden, ccim
MANAGING BROKER
(360) 763-4994
carolyn@rantsgroup.com