

For Sublease

# Office Building

8,700 SF | \$10.00 SF/yr



## Eye Surgery of Wichita Sublease

6100 E Central Avenue Suite 6

Wichita, Kansas 67208

### Property Highlights

- Multiple Exam Rooms
- Three Operating Rooms
- Large Patient Waiting Area
- Recovery Lounge
- Door Side Parking
- Ample Plumbing
- Numerous Adjacent Dining Options

### Property Description

2nd Generation Ambulatory Surgery Center, Near Normandie Shopping Center and Carriage Parkway Shopping Center, 8,700 Square Feet Available for Sublease through 1/31/2027

Area Medical Users include: Life Care Center of Wichita, Ascension Medical Group Physical Therapy, The Hand Center, Wichita Family Medicine Specialists, Wesley Pediatrics, Visiting Angels Homecare, Innovative Physical Therapy, Cat Hospital of Wichita

### OFFERING SUMMARY

<b>Available SF</b>	8,700 SF
<b>Lease Rate</b>	\$10.00/SF Full Service Plus Electric
<b>Building Size</b>	18,000 SF

### DEMOGRAPHICS

Stats	Population	Avg. HH Income
<b>0.5 Miles</b>	1,788	\$107,895
<b>1 Mile</b>	9,346	\$90,949
<b>1.5 Miles</b>	22,792	\$85,416

For more information

**Patrick Ahern, SIOR, CCIM**

O: 316 847 4914  
pahern@naimartens.com

**Sam Steincamp**

O: 316 337 5787  
ssteincamp@naimartens.com



For Sublease

# Office Building

8,700 SF | \$10.00 SF/yr

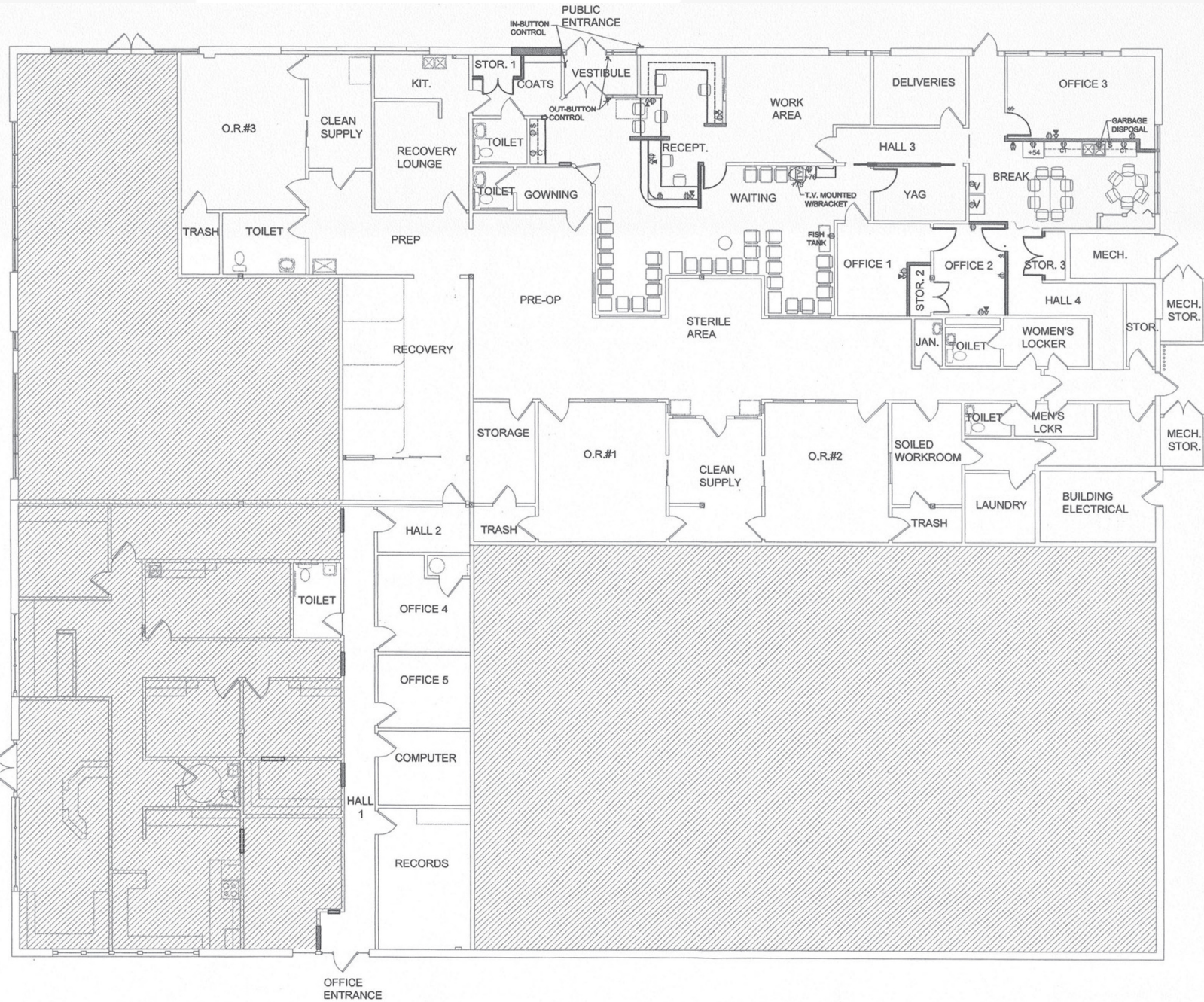




For Lease

# Office Building

8,700 SF | \$10.00 SF/yr





For Lease

# Office Building

8,700 SF | \$10.00 SF/yr

