



For Lease | 2,000-4,000 SF Warehouse Space

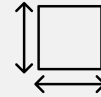
844-845 Whitlock Ave, Jacksonville, FL

Property Highlights:

- High-clear warehouse bays offering true operational efficiency
- 12' x 14' grade-level loading doors for seamless material handling and deliveries
- Strategic Arlington Expressway location providing unmatched reach across Jacksonville
- Zoning & layouts ideal for contractors, distributors, storage, production, and commercial service users



Asking Rate:
Contact Broker for Pricing



Square Footage:
2,000 SF - 4,000 SF



Clear Height / Door:
18' Clear / 12' x 14' Grade Level



Parking Ratio:
2 / 1,000



Zoning:
PUD



**Scan to
Schedule
a Tour**

**FOR MORE INFORMATION
PLEASE CONTACT:**

Kevin Delarosa
407.761.6190
kdelarosa@kollektion.com

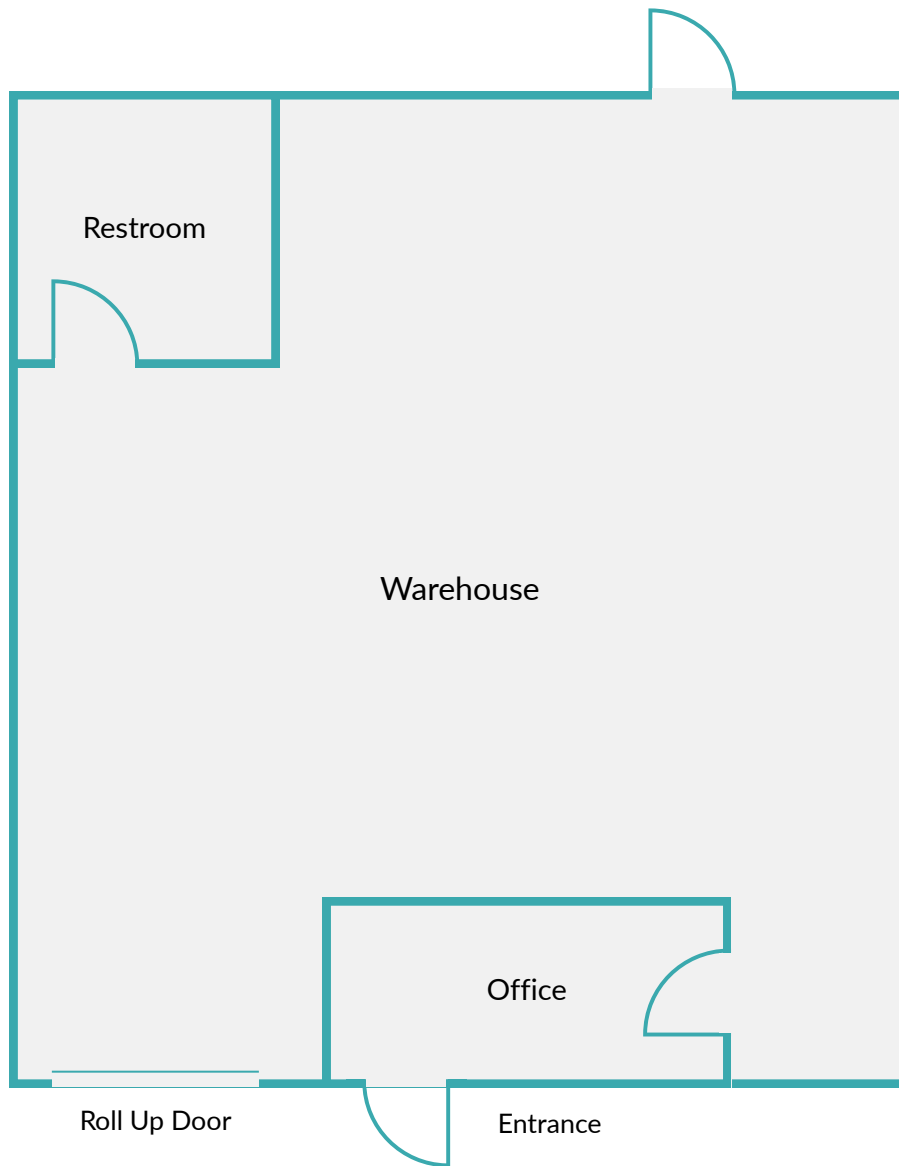
Shalini Hersowitz
954.254.0824
shersowitz@kollektion.com

**COLLEKTION
PROPERTIES**

The information contained herein has been obtained from sources deemed reliable, however, Collektion Properties makes no guarantees, warranties or representation as to its completeness or accuracy thereof. The presentation of this property is submitted subject to errors, omissions, change of price or conditions, prior to sale or lease or withdrawal without notice.

UNIT 103

3,000 SF



**Floor plan is for illustrative purposes only. All dimensions and layouts are approximate and subject to change.*

FOR MORE INFORMATION
PLEASE CONTACT:

Kevin Delarosa
407.761.6190
kdelarosa@kollektion.com

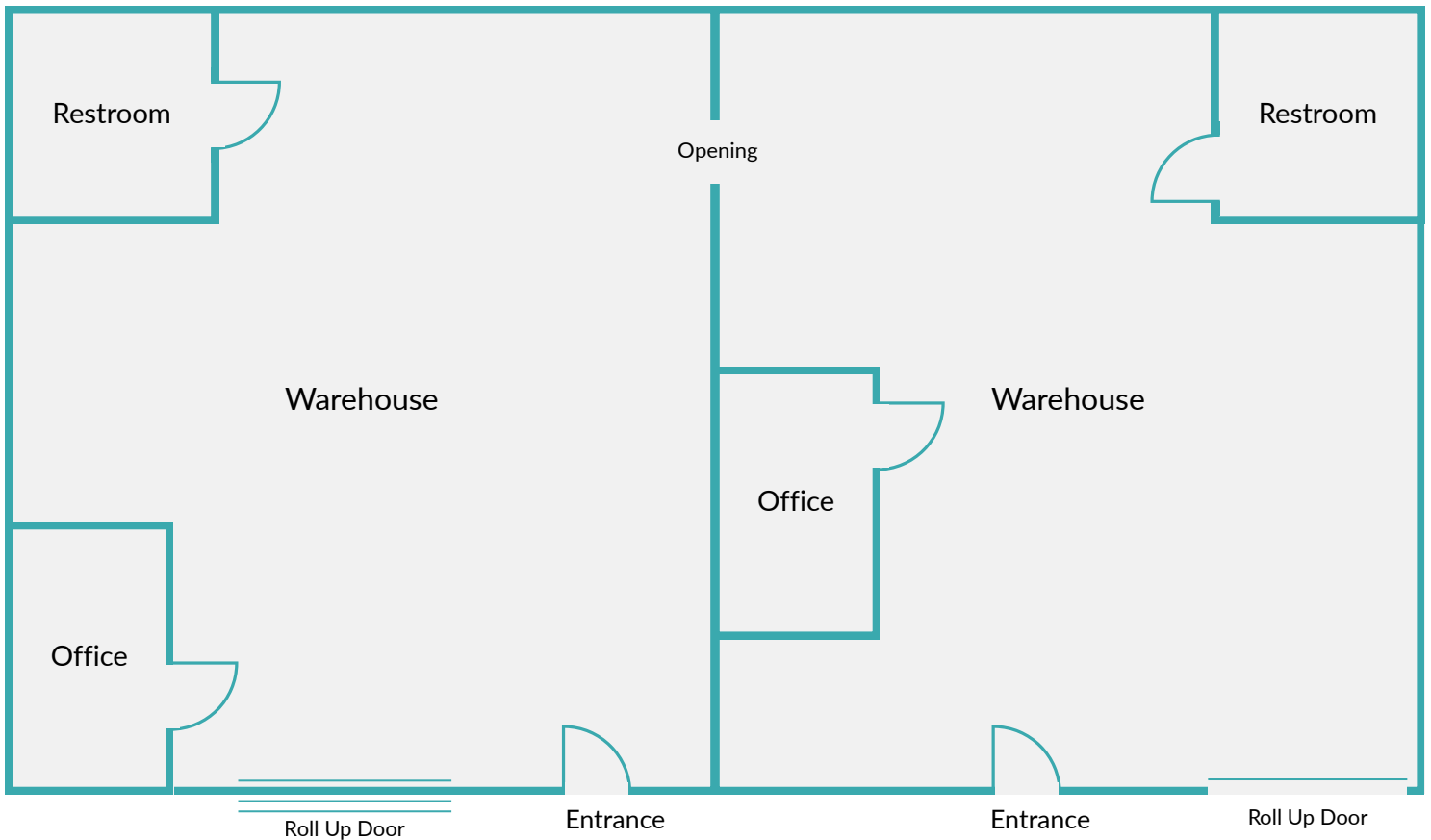
Shalini Hersowitz
954.254.0824
shersowitz@kollektion.com

COLLEKTION
PROPERTIES

The information contained herein has been obtained from sources deemed reliable, however, Kollektion Properties makes no guarantees, warranties or representation as to its completeness or accuracy thereof. The presentation of this property is submitted subject to errors, omissions, change of price or conditions, prior to sale or lease or withdrawal without notice.

UNIT 303-306

4,000 SF



**Floor plan is for illustrative purposes only. All dimensions and layouts are approximate and subject to change.*

FOR MORE INFORMATION
PLEASE CONTACT:

Kevin Delarosa
407.761.6190
kdelarosa@kollektion.com

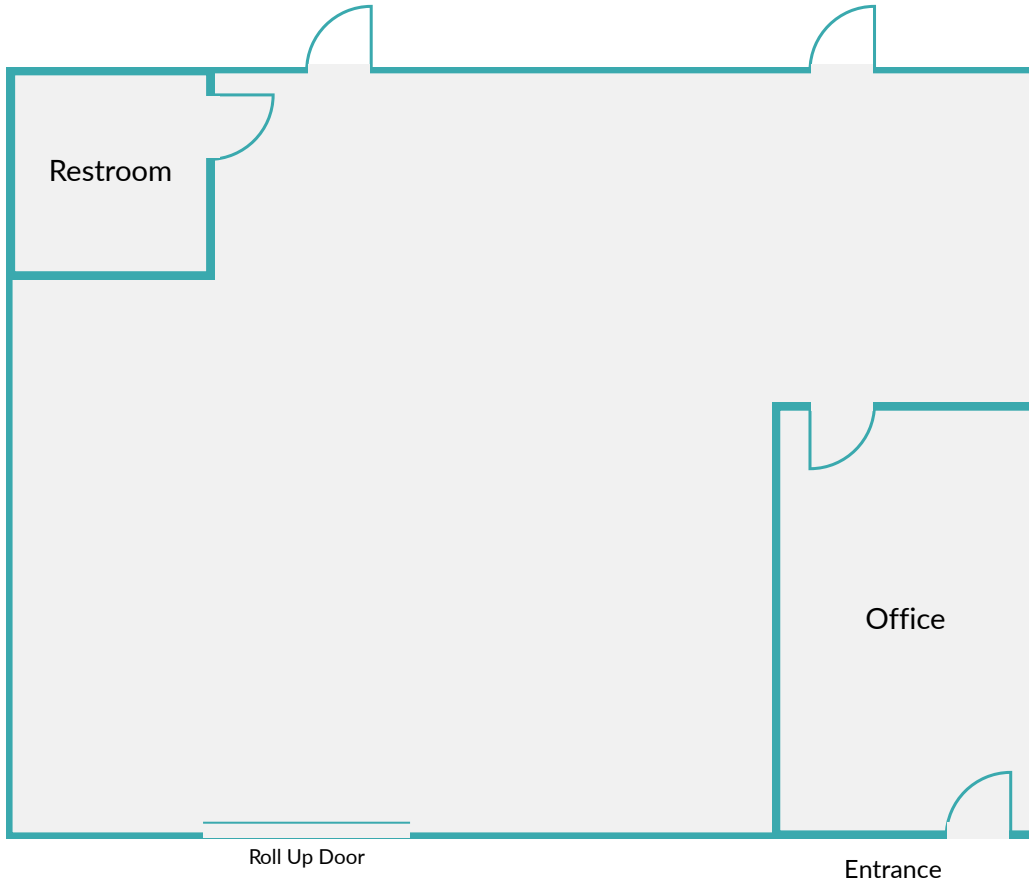
Shalini Hersowitz
954.254.0824
shersowitz@kollektion.com

COLLEKTION
PROPERTIES

The information contained herein has been obtained from sources deemed reliable, however, Kollektion Properties makes no guarantees, warranties or representation as to its completeness or accuracy thereof. The presentation of this property is submitted subject to errors, omissions, change of price or conditions, prior to sale or lease or withdrawal without notice.

UNIT 908

2,000 SF



**Floor plan is for illustrative purposes only. All dimensions and layouts are approximate and subject to change.*



FOR MORE INFORMATION
PLEASE CONTACT:

Kevin Delarosa
407.761.6190
kdelarosa@kollektion.com

Shalini Hersowitz
954.254.0824
shersowitz@kollektion.com

COLLEKTION
PROPERTIES

The information contained herein has been obtained from sources deemed reliable, however, Kollektion Properties makes no guarantees, warranties or representation as to its completeness or accuracy thereof. The presentation of this property is submitted subject to errors, omissions, change of price or conditions, prior to sale or lease or withdrawal without notice.

For Lease | 2,000-4,000 SF Warehouse Space

844-845 Whitlock Ave, Jacksonville, FL



Jacksonville Int'l Airport	18 Miles
Jaxport Talley Road	4.8 Miles
Interstate 295	11 Miles
Interstate 95	5 Miles
Interstate 10	6.8 Miles

FOR MORE INFORMATION
PLEASE CONTACT:

Kevin Delarosa
407.761.6190
kdelarosa@collektion.com

Shalini Hersowitz
954.254.0824
shersowitz@collektion.com



The information contained herein has been obtained from sources deemed reliable, however, Collektion Properties makes no guarantees, warranties or representation as to its completeness or accuracy thereof. The presentation of this property is submitted subject to errors, omissions, change of price or conditions, prior to sale or lease or withdrawal without notice.