

TOK STEELWOOD EXECUTIVE SUITES

COMMERCIAL

OFFICE SPACE FOR LEASE | 1883-1889 WILDWOOD STREET | BOISE, IDAHO 83713



Ample surface parking.

Well-maintained property.

Central visibility with easy access to Fairview Ave.

Professionally managed HOA in the Steelwood Business Park.

Executive suite with shared amenities; including conference room, break room, and copy room.

Internet service included.

Contact agent for showings.

SUITE	SIZE	LEASE RATE
Suite A	165 SF	\$550/Mo.

CONDO SIZE:	4,675 SF
LEASE TYPE:	Gross
NO. OF FLOORS:	2
AVAILABLE:	Immediately

CONTACT



AL MARINO SIOR
208.947.0811
al@tokcommercial.com

HIGHLIGHTS



DETAILS

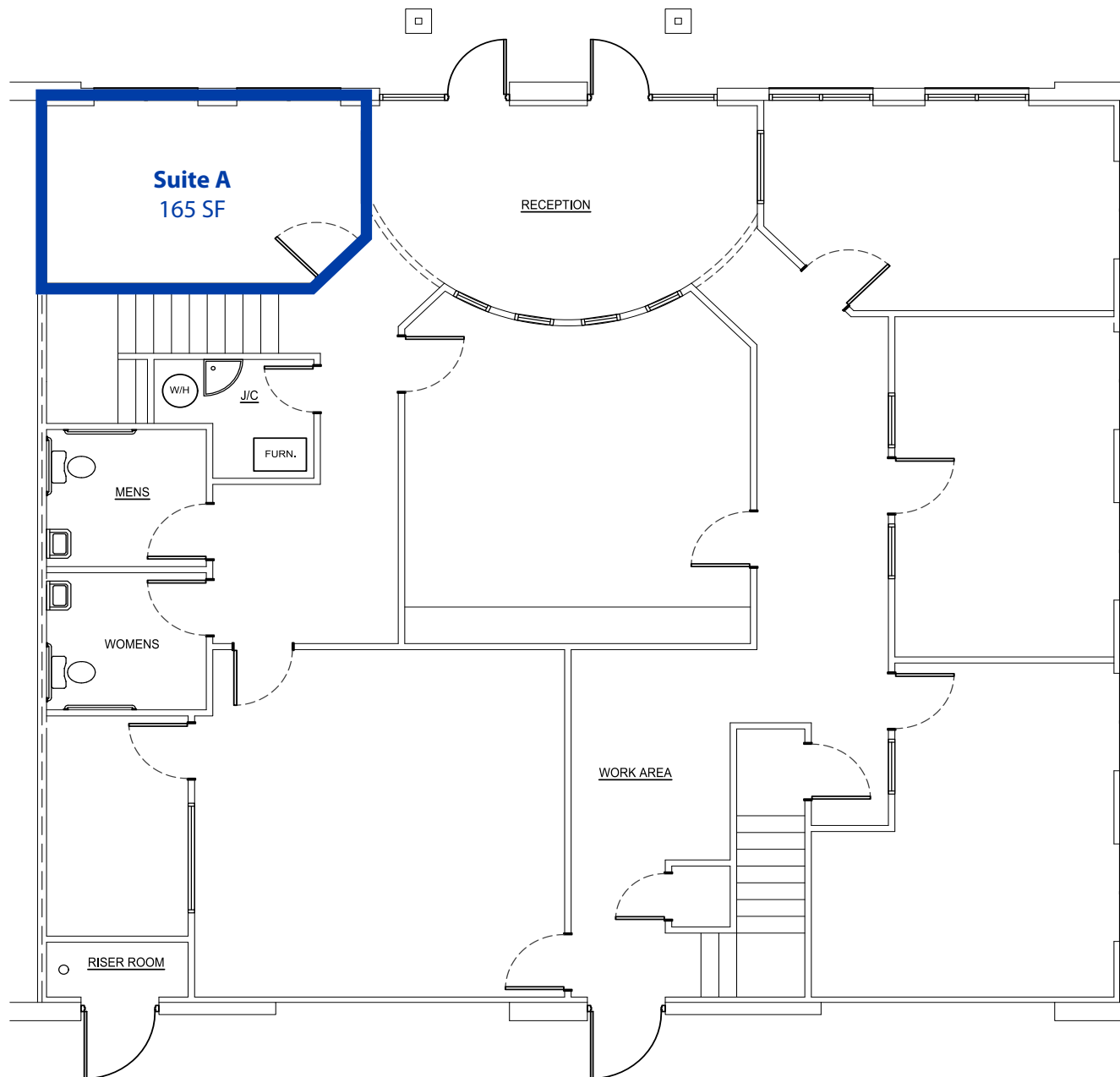


UPDATED: 6.12.2025

THIS PROPERTY IS EXCLUSIVELY MARKETING BY TOK BOISE LLC DBA TOK COMMERCIAL
This information was obtained from sources believed reliable but cannot be guaranteed. Any opinions or estimates are used for example only.

TOKCOMMERCIAL.COM

FIRST FLOOR





UPDATED: 6.12.2025

THIS PROPERTY IS EXCLUSIVELY MARKETING BY TOK BOISE LLC DBA TOK COMMERCIAL

This information was obtained from sources believed reliable but cannot be guaranteed. Any opinions or estimates are used for example only.

TOK

COMMERCIAL

THE VILLAGE AT MERIDIAN



USTICK PROMENADE

SITE

MERIDIAN CROSSROADS



BELMONT PLAZA



80,827

31,951

14,479

14,928

16,722

UPDATED: 6.12.2025

THIS PROPERTY IS EXCLUSIVELY MARKETING BY TOK BOISE LLC DBA TOK COMMERCIAL
This information was obtained from sources believed reliable but cannot be guaranteed. Any opinions or estimates are used for example only.

TOKCOMMERCIAL.COM