

NEWLY RENAMED  
**EAST WEST BANK PLAZA**

HIGHLY VISIBLE OFFICE  
LOCATED ON  
**FIGUEROA AND 6TH**  
ONE OF  
**DTLA'S**  
MOST PROMINENT CORNERS



W.6TH STREET

LOS ANGELES, CA 90017

MOVE-IN READY SUITES AVAILABLE  
**FOR LEASE**





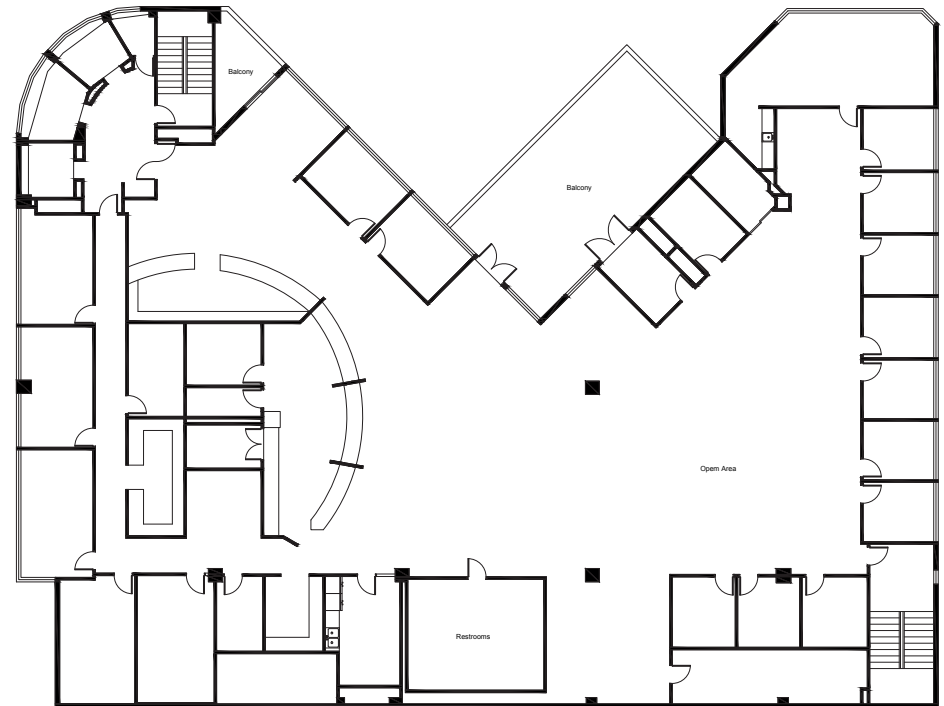
## PROPERTY HIGHLIGHTS



- \* SINGLE TENANT FULL FLOORS AVAILABLE
- \* ASKING RATE: ~~\$3.50 FSC~~ \$3.15 FSG
- \* ±6,400 SF FLOOR PLATES
- \* PRIVATE BALCONIES ON EVERY FLOOR
- \* ±14 FT SLAB TO SLAB
- \* MONUMENT SIGNAGE AVAILABLE
- \* 1.5/1,000 PARKING RATIO STARTING AT \$230/MONTH




## 2ND FLOOR



  
**TWO PRIVATE  
BALCONIES,  
UNIQUE TO DTLA**

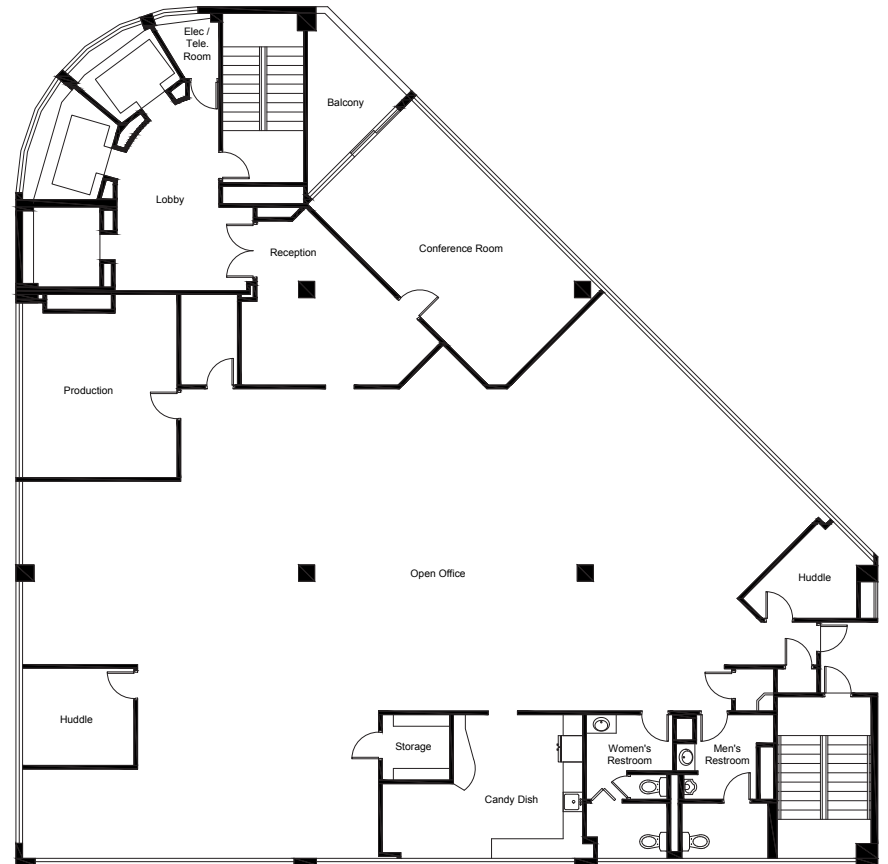
  
**MOVE-IN READY  
CREATIVE SPACE**

  
**PRIVATE OFFICES,  
CONFERENCE ROOMS,  
OPEN WORK AREA**

**APPROX. 14,045 SF**



## 3RD FLOOR



**EXPANSIVE, PRIVATE  
OUTDOOR PATIO THAT  
WRAPS AROUND  
ENTIRE SUITE**



**MOVE-IN  
READY**

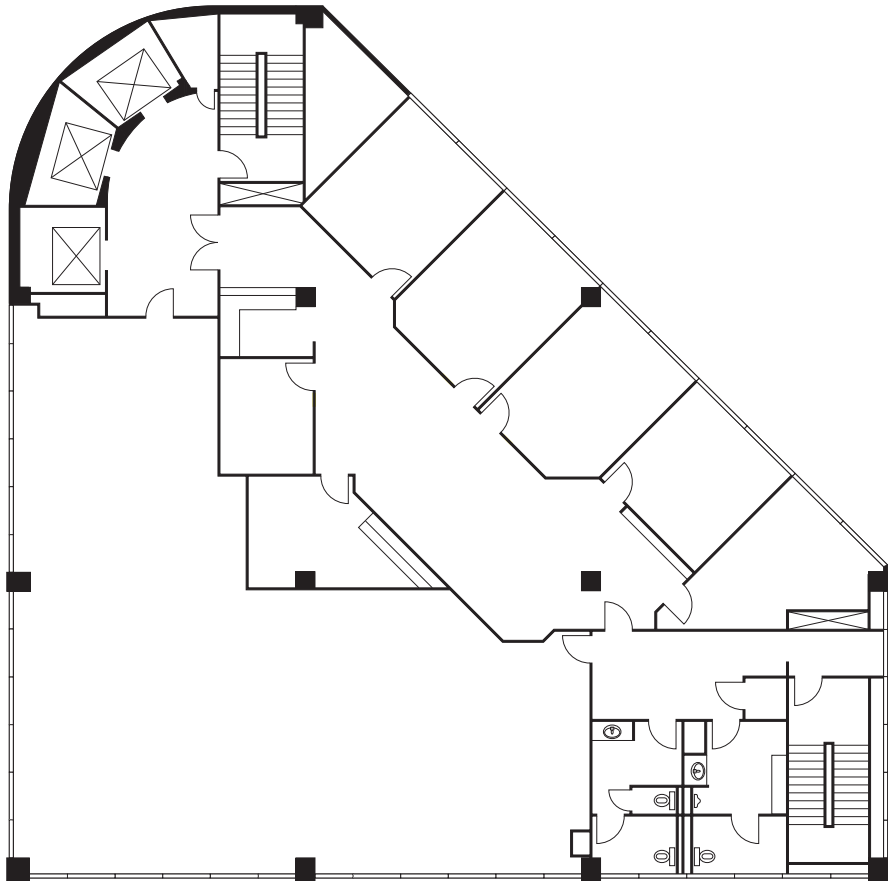


**MOSTLY OPEN  
LAYOUT**



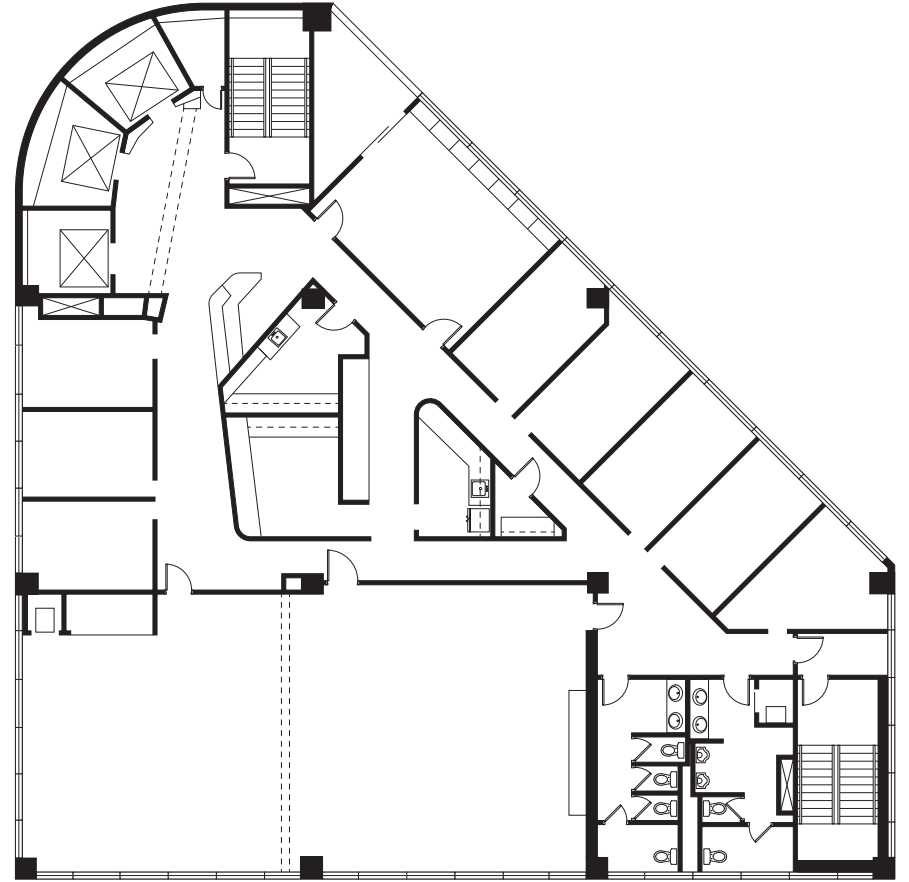
**ABILITY TO  
EXPOSE HIGH  
CEILINGS**

**APPROX. 6,382 SF**



## 5TH FLOOR

APPROX. 2,100 SF

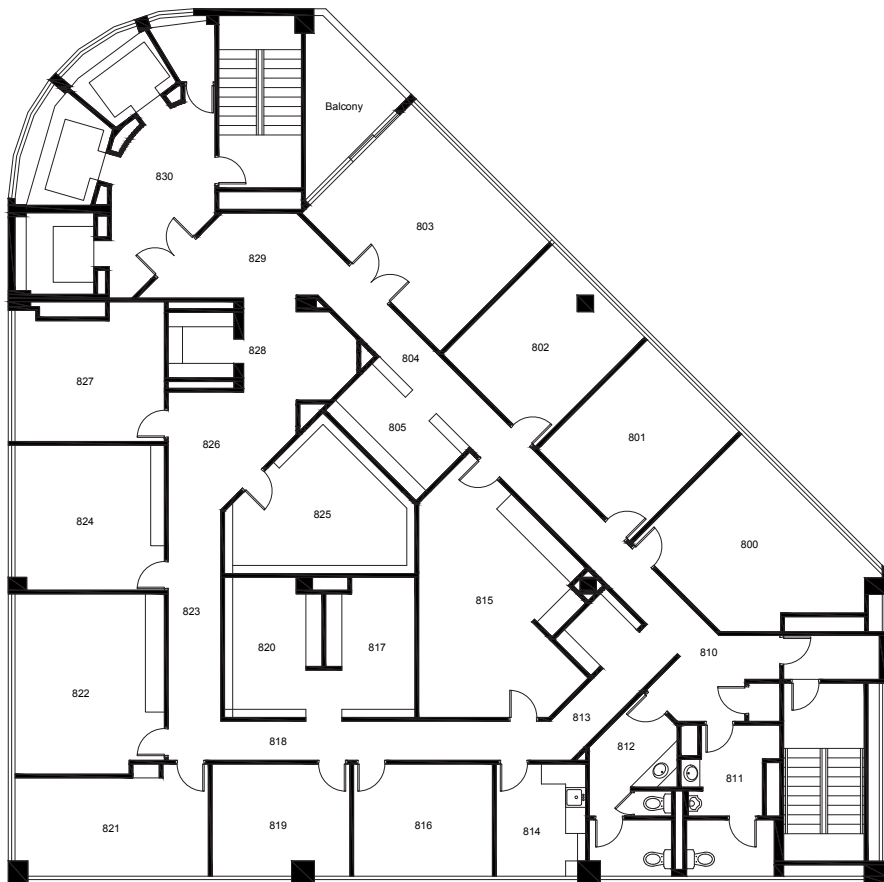


## 6TH FLOOR

APPROX. 6,398 SF

- ✱ SUITE 550
- ✱ CONFERENCE ROOM
- ✱ PRIVATE OFFICES
- ✱ AMPLE NATURAL LIGHT

- ✱ MIX OF PRIVATE OFFICES AND  
CONFERENCE ROOMS WITH  
PRIVATE BALCONY
- ✱ PRIVATE BALCONY
- ✱ AMPLE NATURAL LIGHT



## 8TH FLOOR

APPROX. 6,416 SF

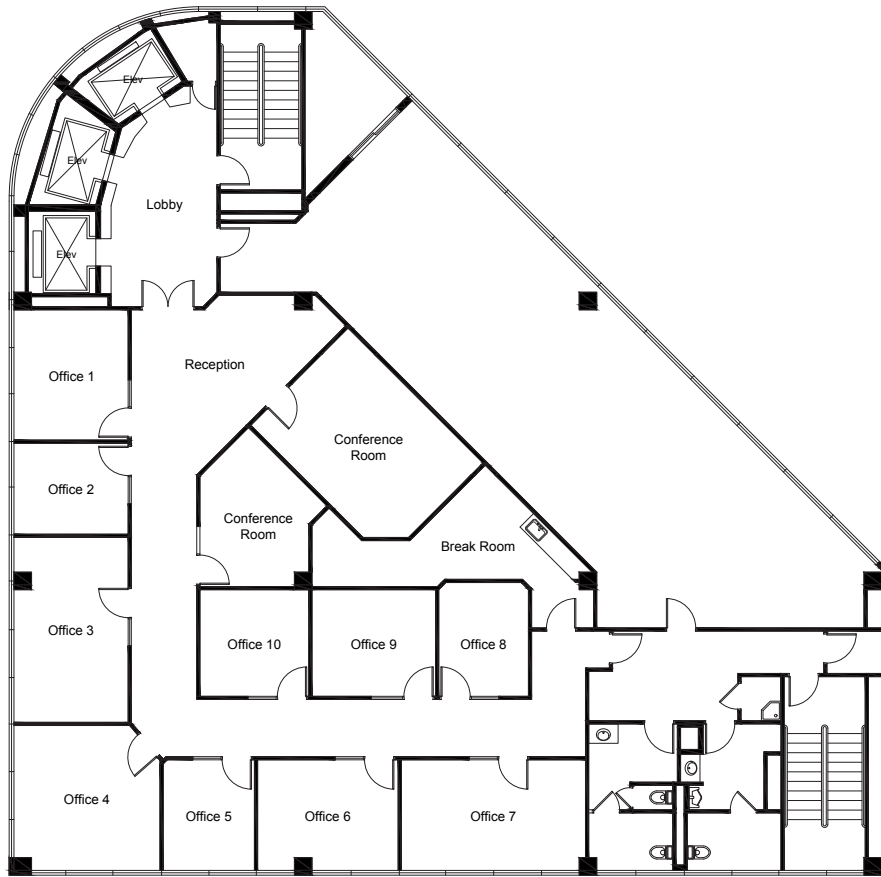


## 9TH FLOOR

APPROX. 6,398 SF

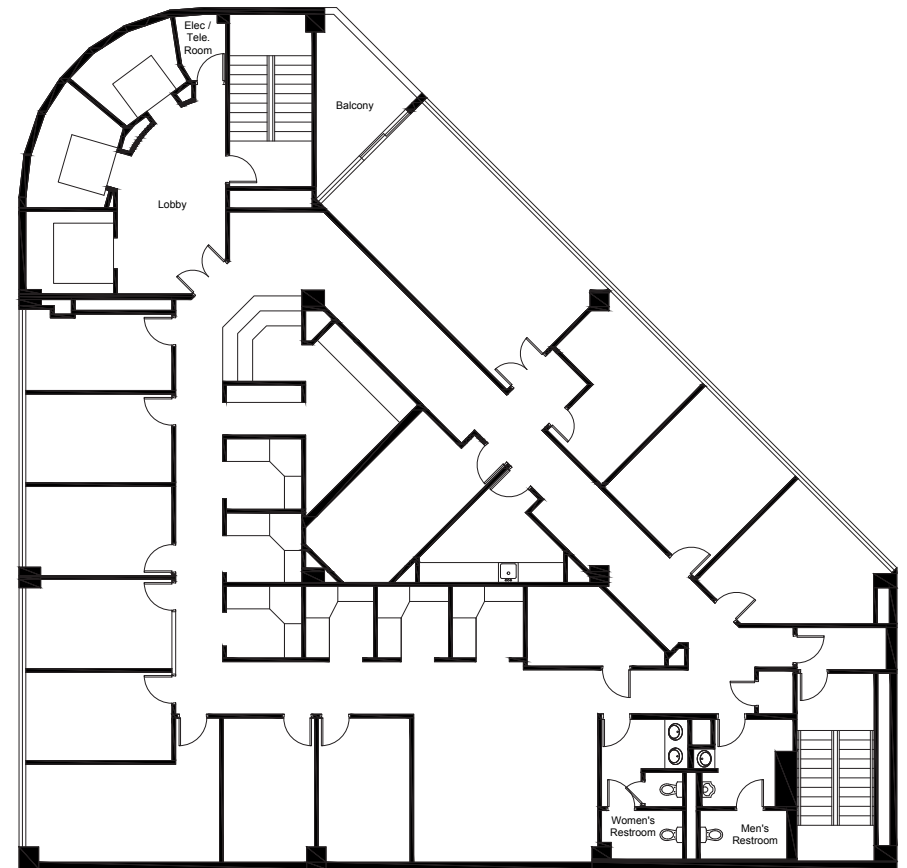
- ✱ TRADITIONAL OFFICE SPACE
- ✱ PRIVATE BALCONY
- ✱ ABILITY TO DEMISE
- ✱ ABILITY TO EXPOSE HIGH CEILINGS

- ✱ TRADITIONAL OFFICE SPACE
- ✱ PRIVATE BALCONY
- ✱ ABILITY TO DEMISE
- ✱ ABILITY TO EXPOSE HIGH CEILINGS



## 11TH FLOOR

APPROX. 4,387 SF

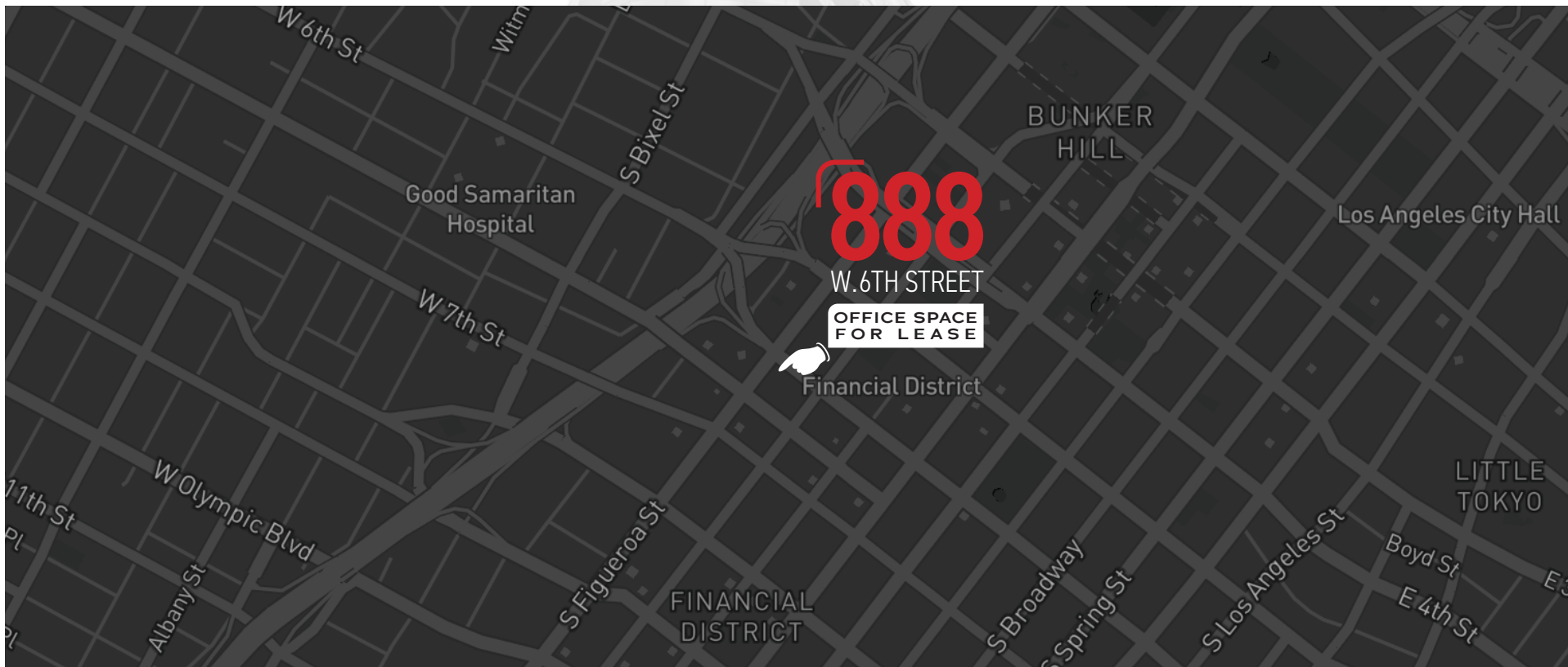


## 14TH FLOOR

APPROX. 6,412 SF

- ✱ PARTIAL FLOOR
- ✱ PRIVATE BALCONY
- ✱ SECOND GENERATION  
LAW FIRM SPACE
- ✱ MOVE-IN READY

- ✱ SECOND GENERATION  
LAW FIRM SPACE
- ✱ PRIVATE BALCONY
- ✱ ABILITY TO DEMISE
- ✱ ABILITY TO EXPOSE HIGH CEILINGS



## CONTACTS



### Chris Caras

Lic. 01229700  
+1 213 613 3303  
chris.caras@cbre.com

### Phillip Sample

Lic. 01145593  
+ 1 213 613 3301  
phillip.sample@cbre.com

### Phil Hauspurg

Lic. 02012230  
+1 310 550 2510  
phil.hauspurg@cbre.com

### Brad Chelf

Lic. 00874364  
+1 310 550 2582  
brad.chelf@cbre.com

---

© 2025 CBRE, Inc. All rights reserved. This information has been obtained from sources believed reliable, but has not been verified for accuracy or completeness. You should conduct a careful, independent investigation of the property and verify all information. Any reliance on this information is solely at your own risk. CBRE and the CBRE logo are service marks of CBRE, Inc. All other marks displayed on this document are the property of their respective owners, and the use of such logos does not imply any affiliation with or endorsement of CBRE. Photos herein are the property of their respective owners. Use of these images without the express written consent of the owner is prohibited.