

# land/outparcel FOR LEASE



RETAIL • HOTEL • OFFICE  
GEE'S GROUP PARTNERS  
SUFFOLK EDA



RESTAURANTS  
GEE'S GROUP PARTNERS  
SUFFOLK EDA



TOWNHOMES • APARTMENTS  
GEE'S GROUP PARTNERS  
SUFFOLK EDA



CLICK HERE FOR VIDEO TOUR

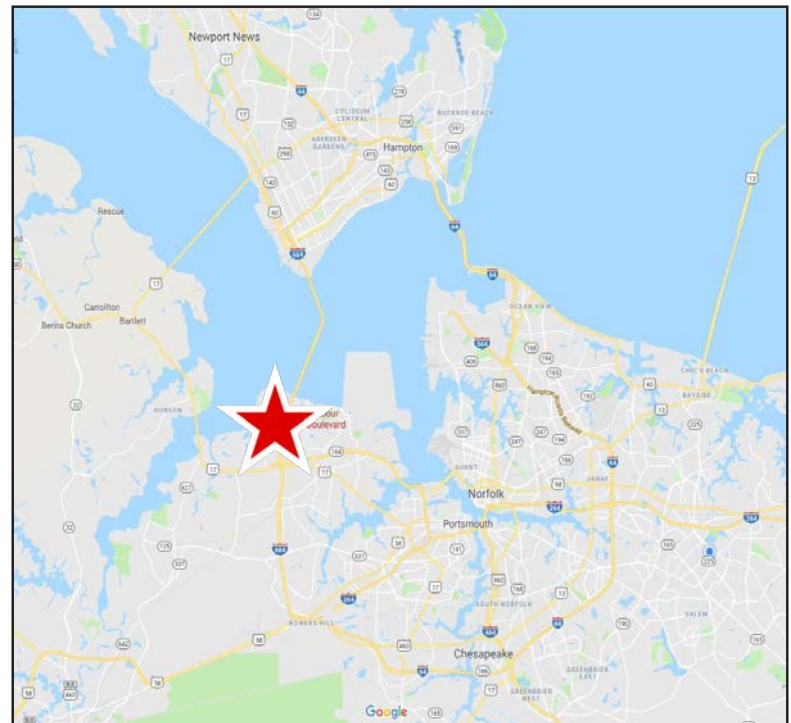
PARCEL C-1A  
1.71 AC

## THE POINT AT HARBOUR VIEW | College Drive & Harbour View Boulevard, Suffolk, Virginia

### PROPERTY FEATURES:

- The Point is a 55 acre mixed-use development** located in the heart of Harbour View in Suffolk. The development is designed to accommodate up to ±212,000 sf of multi-use space, including outparcels. The Point also features a first-class residential component containing 100 townhomes and 300 apartments within walking distance.
- Parcel C-1 is approximately 1.71 AC** and located at the entrance of the development
- Over 62,000 VPD on I-664**; interstate signage avail
- Neighborhood Employers include:** DOD (1,700 employees); US Navy (1,500 employees); and Sysco Foods (500 employees) and Bon Secours has just broken ground on a 98,000 SF, three-story hospital set to open in 2025!

DEMOGRAPHICS	3 MILES	5 MILES	10 MILES
Est. Population	38,579	95,920	291,406
Avg HH Income	\$66,756	\$72,505	\$74,896
Households	15,131	39,431	119,269



parker|burnell

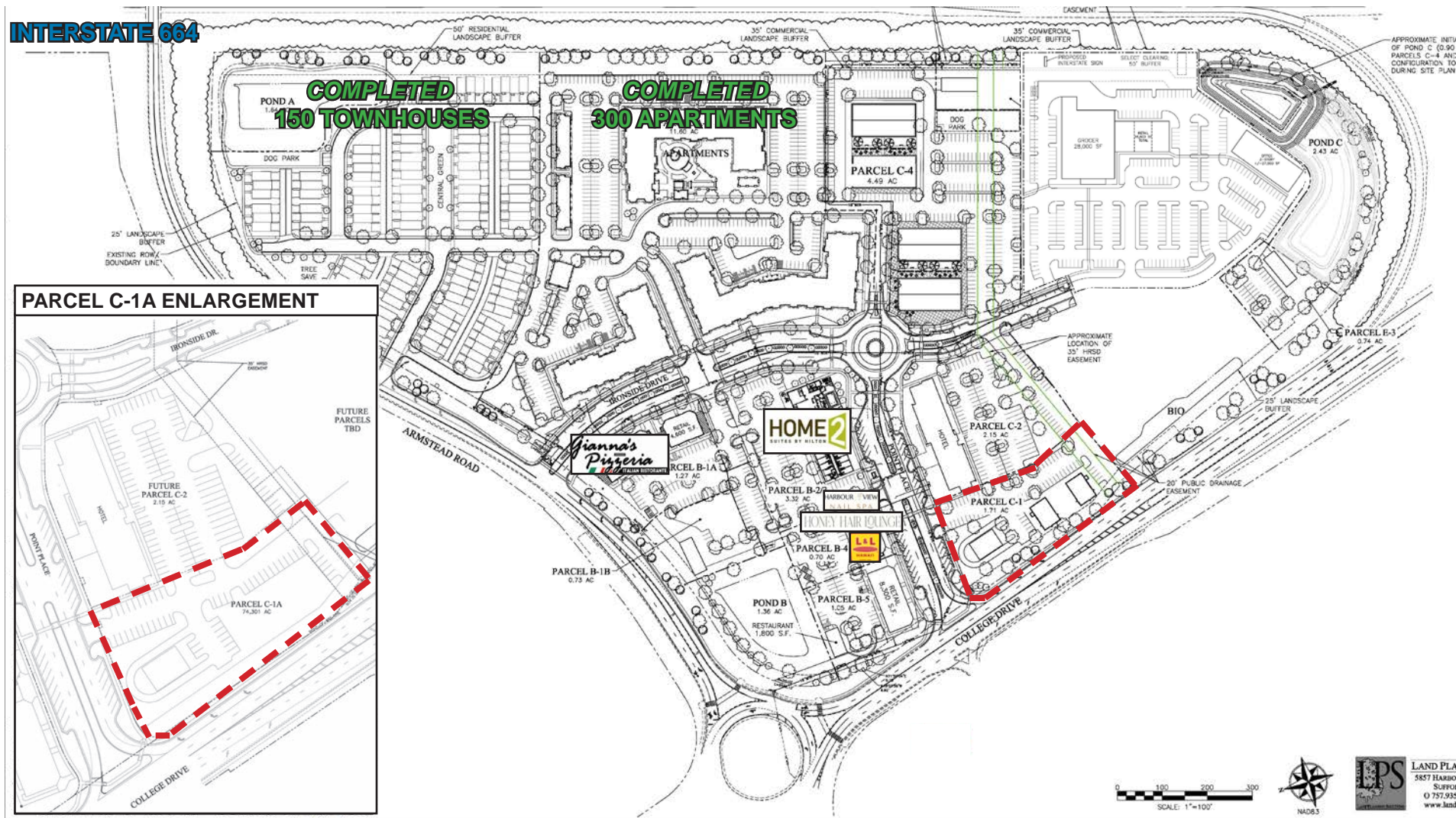
real estate group

Jay Burnell  
o: 757.222.0111  
m: 757.617.3511  
jay@parkerburnell.com

Kristen Huber  
o: 757.222.0111  
m: 757.714.2341  
kristen@parkerburnell.com



**PRELIMINARY PLAN (CLOSE UP OF PARCEL C-1A)**



THE **POINT**  
AT HARBOURVIEW



Jay Burnell  
o: 757.222.0111  
m: 757.617.3511  
jay@parkerburnell.com

Kristen Huber  
o: 757.222.0111  
m: 757.714.2341  
kristen@parkerburnell.com



# SITE PHOTOS





# New Residential - Harbour View 7-24-20

## Recently Completed

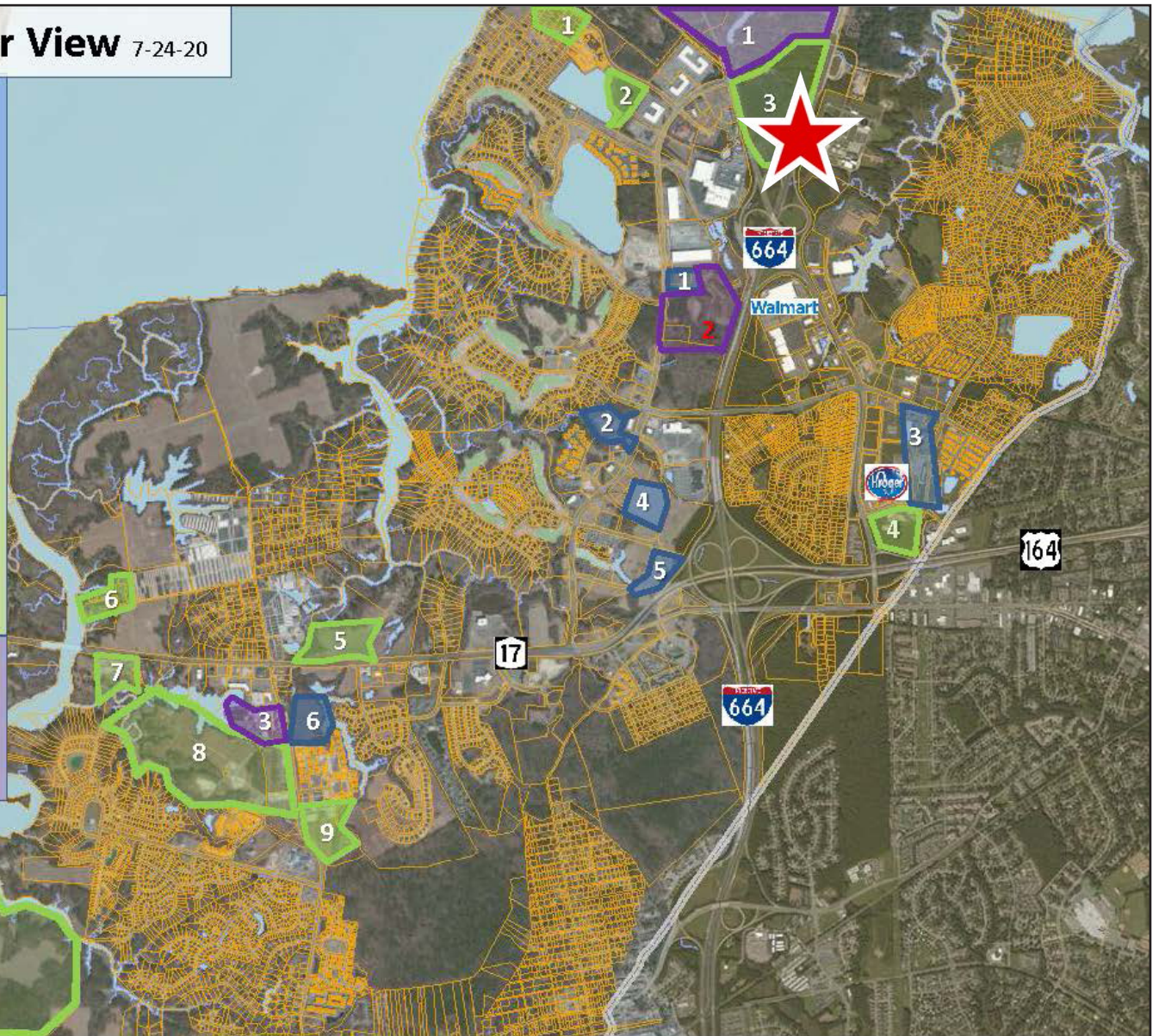
- 1- Bickford Senior (aged care) - 45 units
- 2- The Crossings (aged care) - 174 units
- 3- H. Roads Crossing (sale/rental) - 30/444 units
- 4- Claremont at H.View (rental) - 276 units
- 5- Meridian at H.View (rental) - 224 units
- 6- Hilltop Terrace (rental) - 147 units

## Under Construction

- 1- Sunfall (sale) - 85 units
- 2- Bridgeway Dr. (sale) - 70 units
- 3- Point at H.View (rental/sale) - 300/100 units
- 4- Park 216 (rental) - 250 units
- 5- 3800 Aqua/Royal Sail (for rent) - **700+** units
- 6- Decoy's (sale) - 28 units
- 7- Rt 17 Apartments (rental) - 125 units
- 8- Bennett's Creek Qtr (sale) - 560 units
- 9- The Cove (sale) - 45 units
- 10- River Club (sale) - 430 units

## Preplanning (zoning needed)

- 1- College Point (sale/rental) - **2,500+** units
- 2- HV Blvd Mixed Use (sale/rental) - 600 units  
REZONED 7/20
- 3- Shoulders Hill (rental) - 250 units



## Harbour View Market Profile, 2018 – 2023

### Population:

2018 5 miles: 96,632    10 miles: 348,604    15 miles: 869,560  
 2023 5 miles: 101,022    10 miles: 357,561    15 miles: 892,860

Source: esri

### Households:

2018 5 miles: 35,917    10 miles: 122,800    15 miles: 324,849  
 2023 5 miles: 37,404    10 miles: 125,974    15 miles: 333,338

Source: esri



