



METCALF
PLAZA



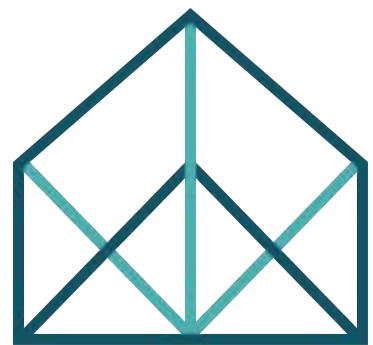
7171 W 95TH ST, OVERLAND PARK, KS 66212

OFFICE & RETAIL SPACE FOR LEASE



BRAIN GROUP





WELCOME TO METCALF PLAZA

Metcalfe Plaza is conveniently located on the corner of 95th Street and Metcalfe Avenue in Overland Park, Kansas. Metcalfe Plaza is currently offering several office and retail suites for lease. This iconic property features a variety of amenities and immediate access to a diverse selection of retail and restaurants in the 95th & Metcalfe Corridor.

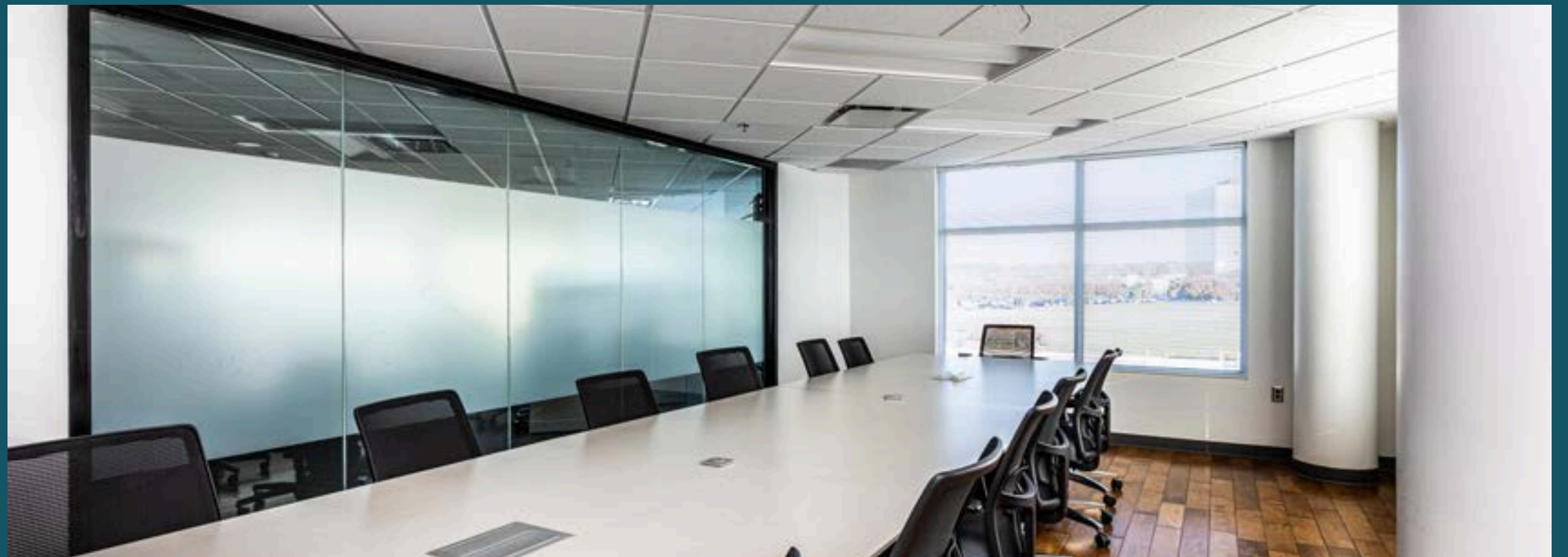


PROPERTY FEATURES



- 1,150 - 7,000 SF available for lease
- First floor space with building signage - ideal for retail, office or showroom
- Building conference room accessible to all tenants
- 56,100 CPD through intersection of 95th St & Metcalf Ave
- Responsive, on-site property maintenance
- Immediate access to a variety of retail and restaurants: Jack Stack BBQ, Long Horn Steakhouse, Lowe's, Home Depot, Natural Grocers, Whataburger, Chick-Fil-A, Sickie's Garage, Topsy's, Andy's Frozen Custard, and others
- Google Fiber available

PROPERTY VISUALS

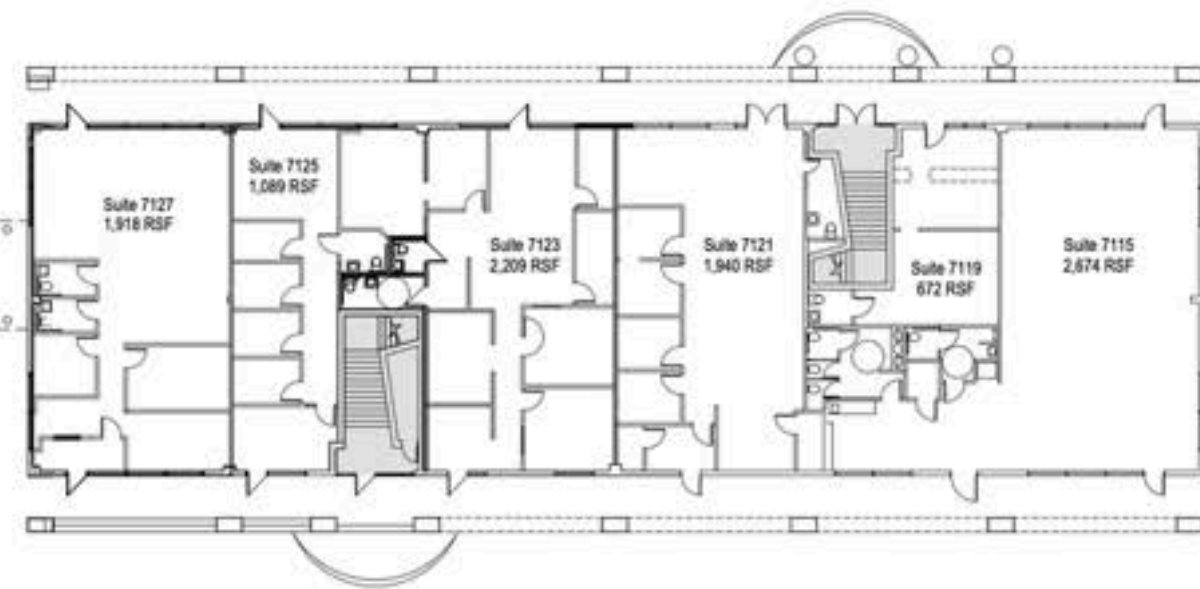
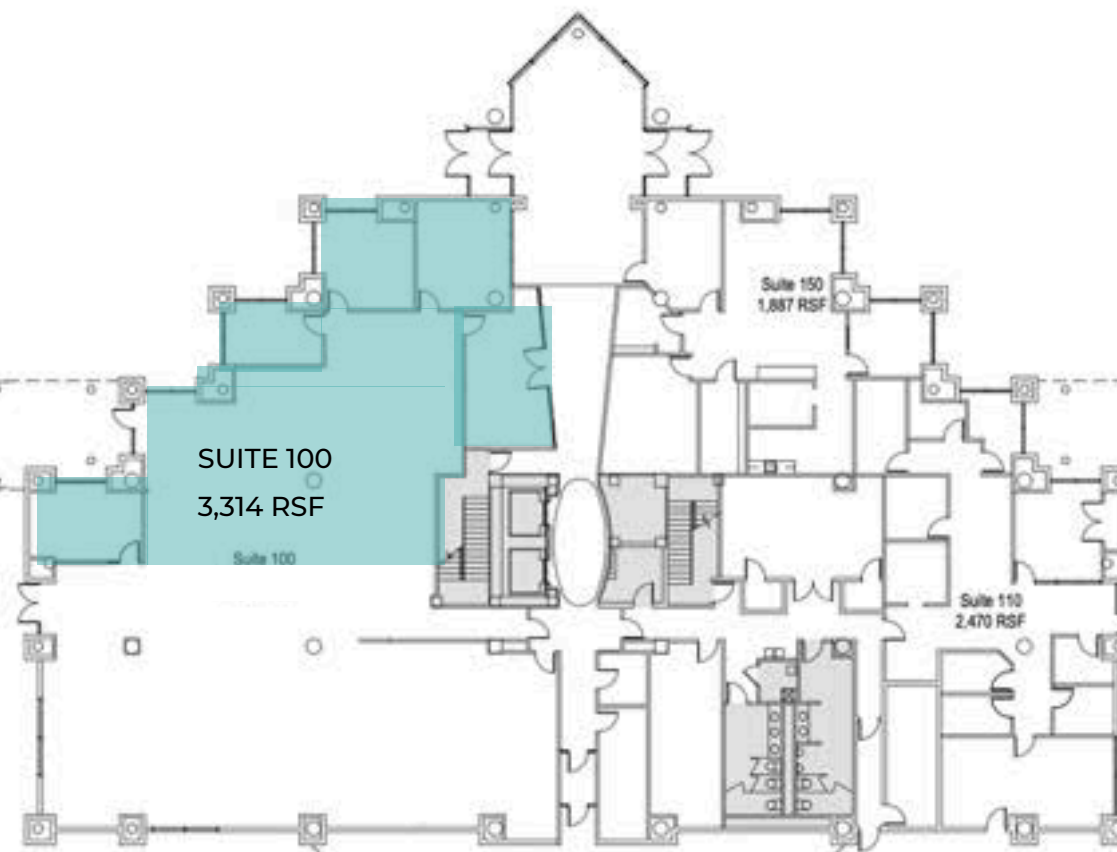
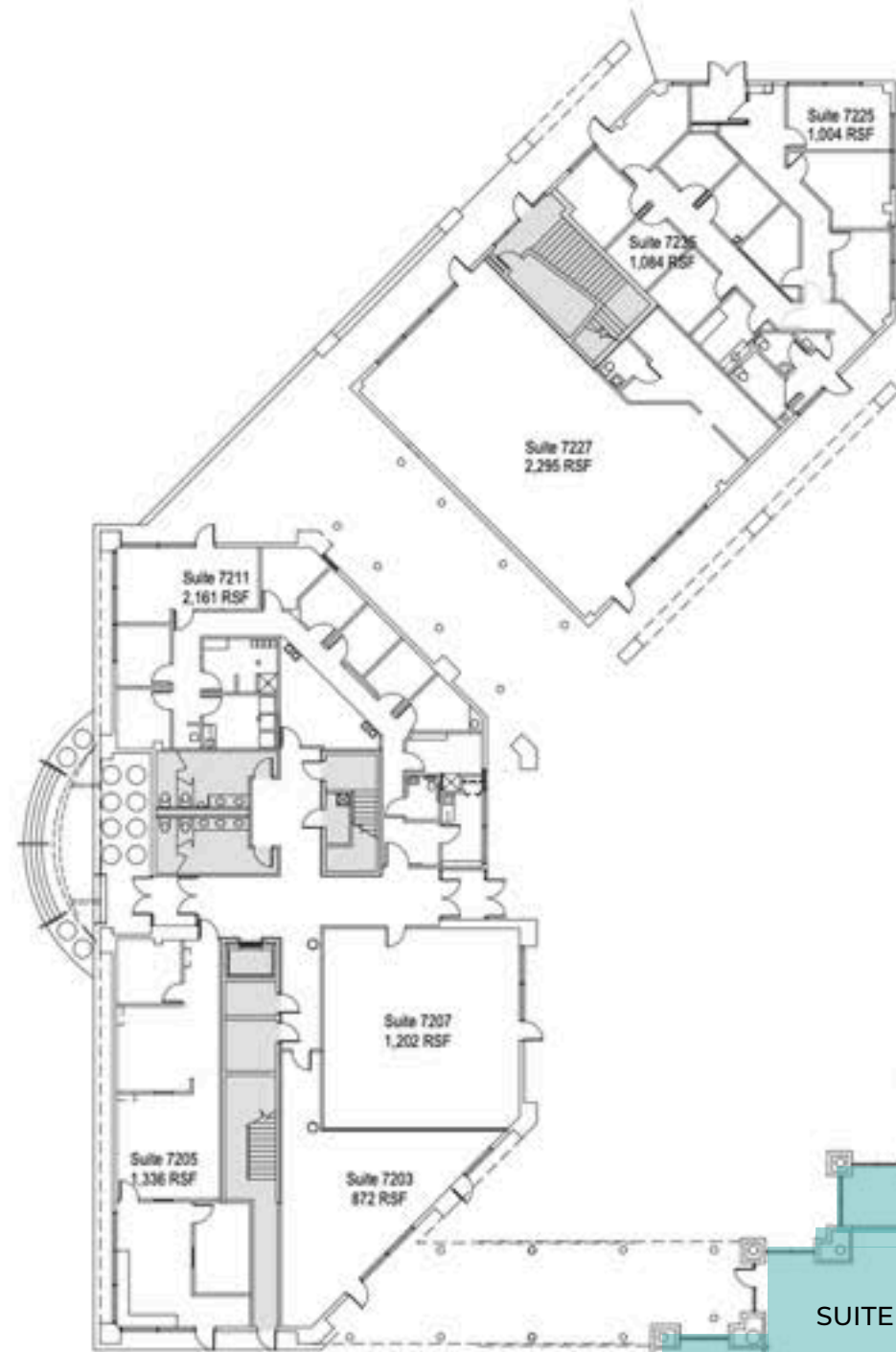




AVAILABLE SPACE

7171 W 95TH ST, OVERLAND PARK, KS 66212

AVAILABLE SPACE | FLOOR 1



- 💰 RATES: \$21/SF, FULL SERVICE RATE
- 🔧 TI: NEGOTIABLE
- 🅑 PARKING: 4.5 PER 1,000 SF
- 📄 LEASE TERM: NEGOTIABLE
- 🏢 BUSINESS PARK TYPE: OFFICE/RETAIL

AVAILABLE SPACE | FLOOR 2



💰 RATES: \$20/SF, FULL SERVICE RATE

🔧 TI: NEGOTIABLE

🅑 PARKING: 4.5 PER 1,000 SF

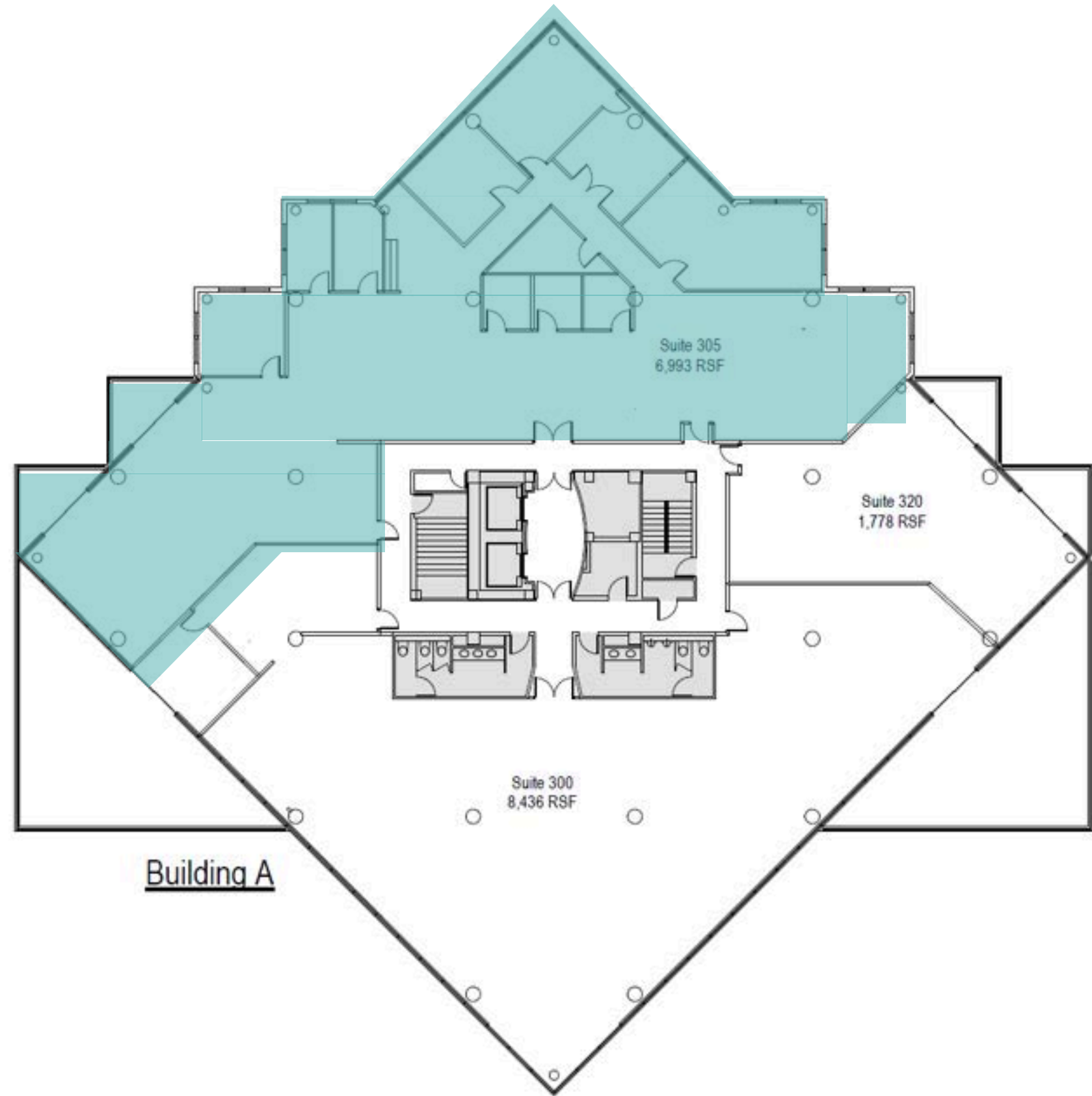
📄 LEASE TERM: NEGOTIABLE

🏢 BUSINESS PARK TYPE: OFFICE/RETAIL

AVAILABLE SPACE

SUITE 305

- 💰 RATES: \$20 /SF, FULL SERVICE RATE
- 🔧 TI: NEGOTIABLE
- 🅑 PARKING: 4.5 PER 1,000 SF
- 📄 LEASE TERM: NEGOTIABLE
- 🏢 BUSINESS PARK TYPE: OFFICE/RETAIL



AVAILABLE SPACE

SUITE 401

- 💰 RATES: \$20/SF, FULL SERVICE RATE
- 🔧 TI: NEGOTIABLE
- 🅑 PARKING: 4.5 PER 1,000 SF
- 📄 LEASE TERM: NEGOTIABLE
- 🏢 BUSINESS PARK TYPE: OFFICE/RETAIL



AVAILABLE SPACE

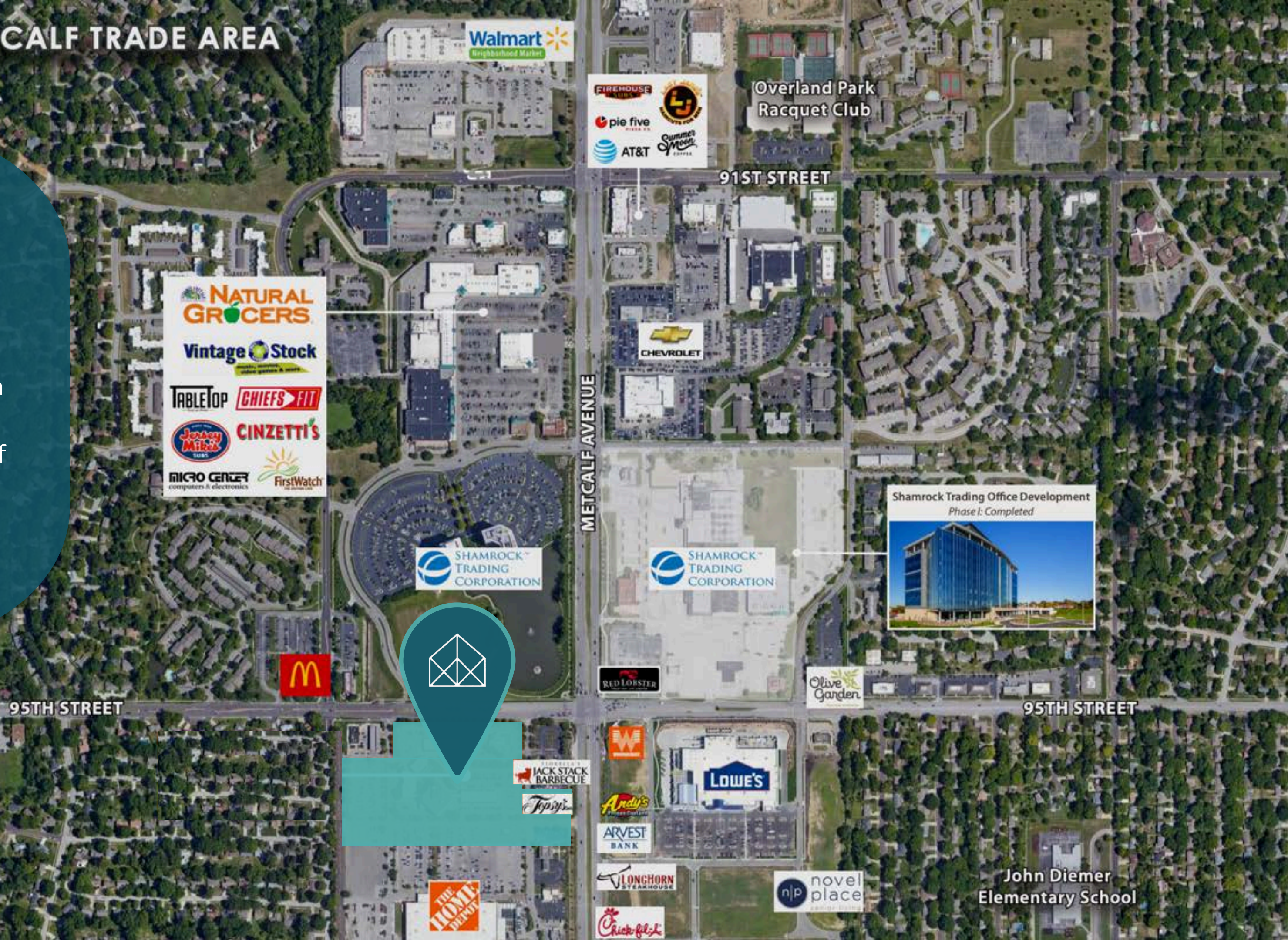
SUITE 500

- 💰 RATES: \$20/SF, FULL SERVICE RATE
- 🔧 TI: NEGOTIABLE
- 🅑 PARKING: 4.5 PER 1,000 SF
- 📄 LEASE TERM: NEGOTIABLE
- 🏢 BUSINESS PARK TYPE: OFFICE/RETAIL



95TH & METCALF TRADE AREA

Located in the heart of the 95th & Metcalf Retail/Office Corridor with a daytime population of 111,000+ within a 3-mile radius.



NATURAL GROCERS
Vintage Stock
TABLETOP CHIEFS FIT
Jersey Mike's CINZETTI'S
MICRO CENTER computers & electronics FirstWatch

SHAMROCK TRADING CORPORATION

METCALF AVENUE

91ST STREET

Overland Park Racquet Club

Walmart Neighborhood Market
FIREHOUSE SUBS
pie five
AT&T
Summer Moon COFFEE

CHEVROLET

Shamrock Trading Office Development Phase I: Completed



SHAMROCK TRADING CORPORATION

95TH STREET

95TH STREET

RED LOBSTER

Olive Garden

JACK STACK BARBECUE

W

LOWE'S

Andy's

ARVEST BANK

LONGHORN STEAKHOUSE

novel place

John Diemer Elementary School

THE HOME DEPOT

Chick-fil-A



CONTACT US

ANDREW BRAIN
(816) 281-5900
ABRAIN@BRAINGROUP.COM

KIMMY ANGIER
(816) 281-5900
KANGIER@BRAINGROUP.COM

300 E 39TH ST KCMO, 64111
WWW.BRAINGROUP.COM

