



Office/Retail Business Park

Barringer Crossing I

14241 Airline Highway
Baton Rouge, LA 70817

About the Property

- ▶ 24,120 square foot inline retail building anchored by 216,720 square foot Barringer Foreman Technology Park
- ▶ Suite sizes starting at 1,000 square feet
- ▶ Great visibility, high traffic counts and abundant free parking

Inline Retail Space

14241 Airline Highway 24,120 SF

Traffic Count

Airline Highway (US 61): 31,956 vehicles/day

Demographics

	1 Mile	3 Miles	5 Miles
Population	3,370	41,842	89,220
Avg. Household Income	\$101,466	\$106,532	\$106,151

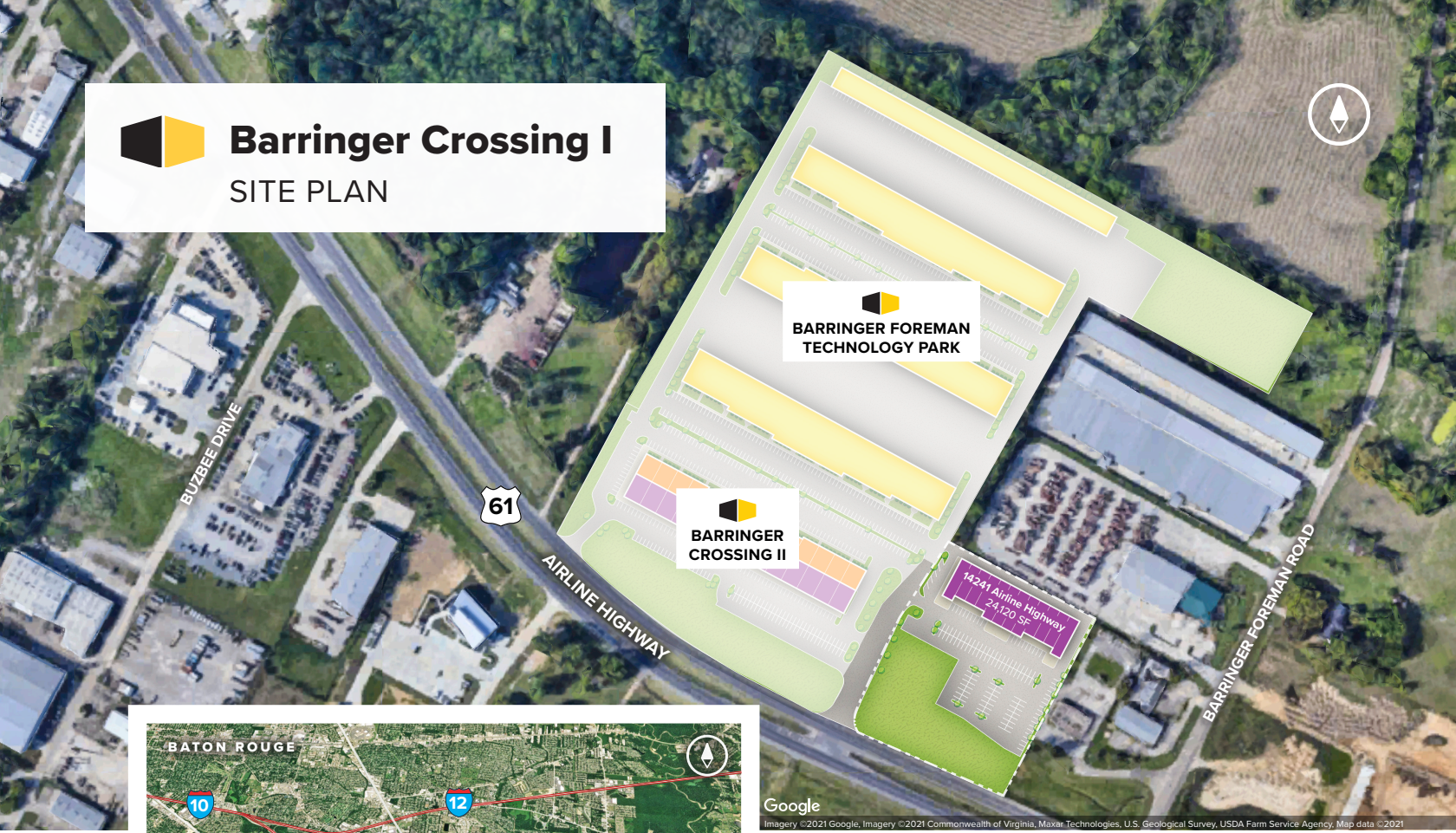


For more information on Barringer Crossing I, visit: sjpi.com/barringer1



Barringer Crossing I

SITE PLAN



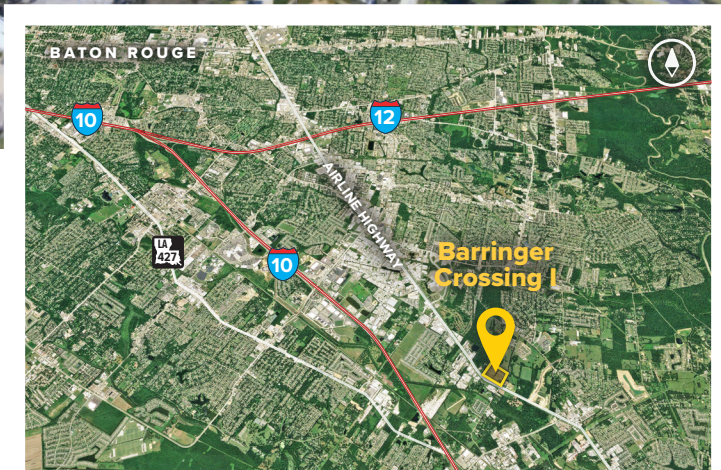
**BARRINGER FOREMAN
TECHNOLOGY PARK**

**BARRINGER
CROSSING II**

14241 Airline Highway
24,120 SF

Google

Imagery ©2021 Google, Imagery ©2021 Commonwealth of Virginia, Maxar Technologies, U.S. Geological Survey, USDA Farm Service Agency, Map data ©2021



Contact Us

For additional leasing information or to schedule a tour, contact:

Todd Pevey

Regional Partner, Louisiana

tpevey@sjpi.com | 225.571.1002

Louisiana Regional Headquarters:

6473 Highway 44 | Suite 201

Gonzales, LA 70737

225.257.4820 | SJPI.COM/LOUISIANA



Scan with your mobile device to take a virtual tour, download floor plans and more!

About St. John Properties

St. John Properties Louisiana owns and is developing more than 662,000 square feet of commercial space across six business communities in the Baton Rouge and Gonzales metro areas.

St. John Properties, Inc. is a full-service real estate company headquartered in Baltimore, Maryland. The company owns, manages and has developed more than 22 million square feet of commercial real estate nationwide.

Connect with us **@stjohnprop**



MD • CO • LA • NV • PA • TX • UT • VA • WI



This information contained in this publication has been obtained from sources believed to be reliable. St. John Properties makes no guarantee, warranty or representation about this information. Any projections, opinions, assumptions or estimates used here are for example only and do not represent the current or future performance of the property. Interested parties should conduct an independent investigation to determine whether the property suits their needs. REV 06/21