

Prime Medical Office Leasing Opportunity

Lake Success Business Park is a fully renovated office space in New Hyde Park with approximately 200,000 square feet of prime office space. The building is strategically located in the village of North Hills, Long Island, New York, at the Long Island Expressway and New Hyde Park Road intersection and close to Northern State Parkway.

Lake Success Business Park is conveniently located within a 2-minute drive to Northwell Hospital Campus and a 7-minute drive to Cohen Children's Medical Center, providing an avenue to some of the area's most prominent names in healthcare. The property is strategically located only 20 miles to Manhattan and John F. Kennedy International Airport can be reached in under 30 minutes.

- /// Class "A" Building and Location
- /// Fully Renovated
- /// Availability
 - /// Ground Floor – 3,500 SF
 - /// Suite 204 – 4,887 SF
 - /// Suite 210 – 7,875 SF
 - /// Suite 317 – 4,334 SF
- /// Parking Ratio 5:1
- /// On-Site Cafe
- /// Proximity to LIE and NSP
- /// Under 30 mins to all major airports

Vladi Andrei

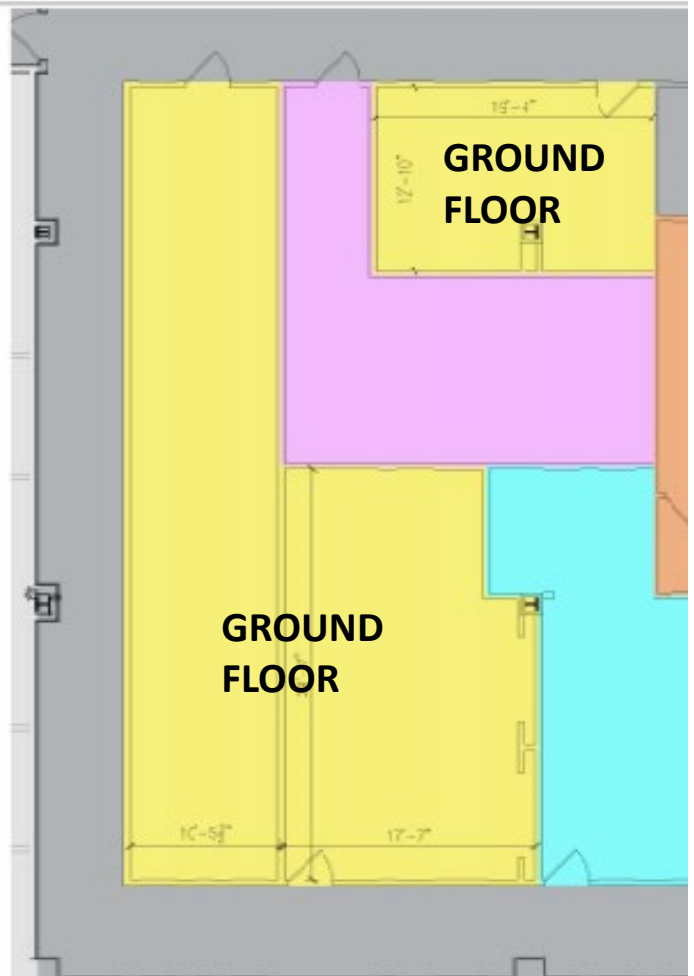
E: vandrei@SteelEquities.com
O: 516-465-0000

Jason Miller

E: jmiller@steelequities.com
O: 516-465-0000

Steel Equities

999 South Oyster Bay Road, Suite 200
Bethpage, New York 11714



Vladi Andrei

E: vandrei@SteelEquities.com

O: 516-465-0000

Jason Miller

E: jmiller@steelequities.com

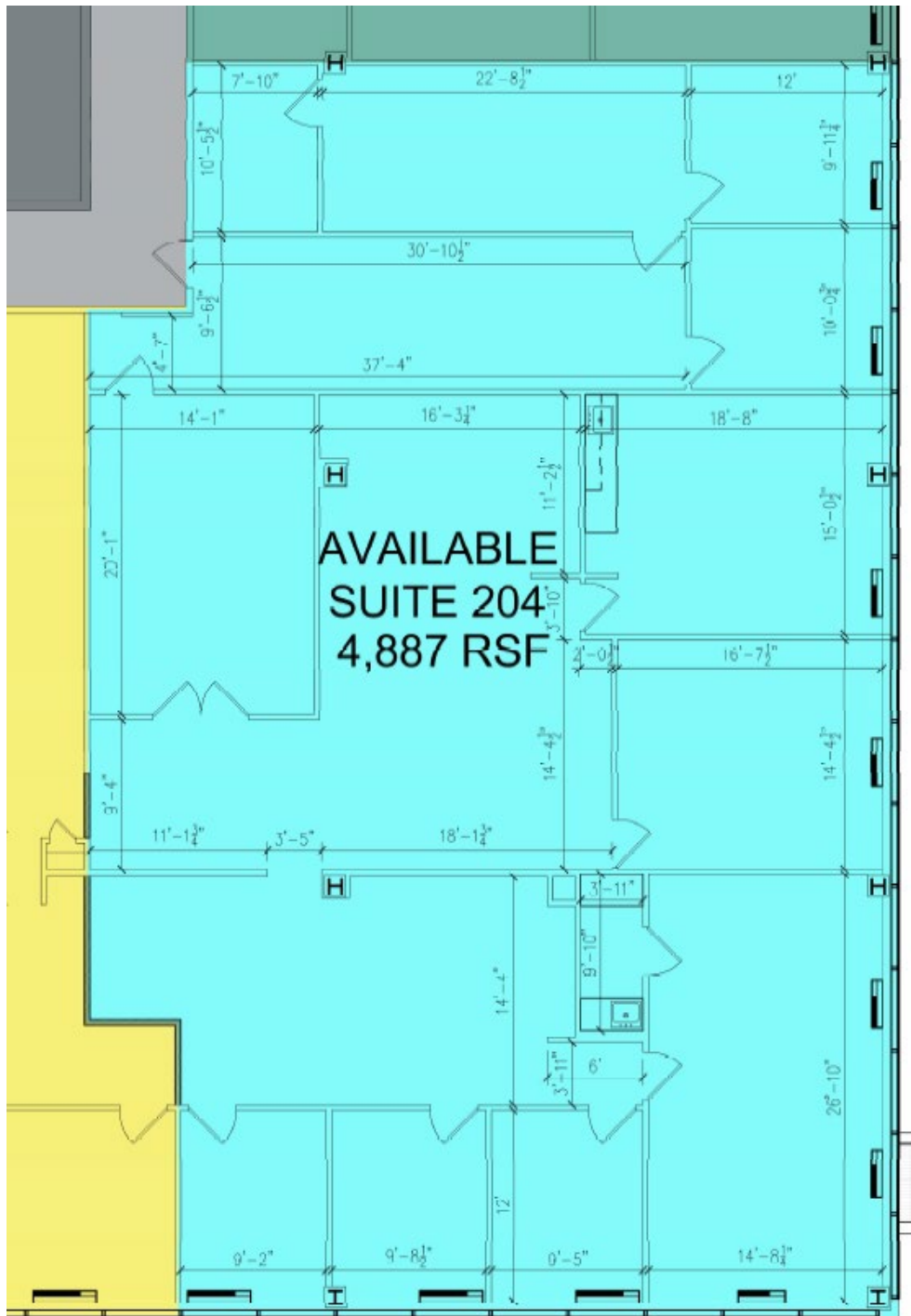
O: 516-465-0000

Steel Equities

999 South Oyster Bay Road, Suite 200

Bethpage, New York 11714

Lake Success Business Park



Vladi Andrei

E: vandrei@SteelEquities.com

O: 516-465-0000

Jason Miller

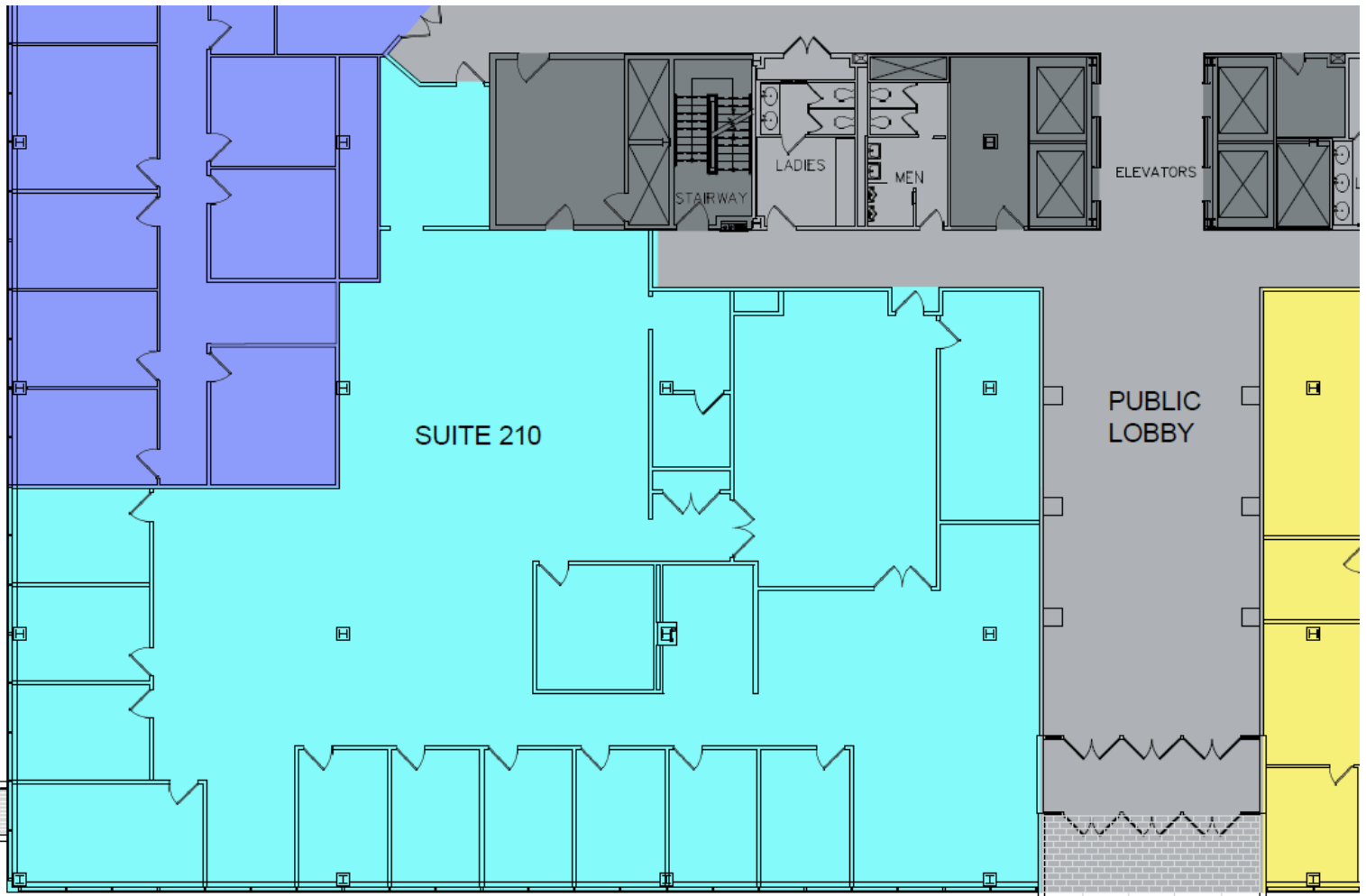
E: jmiller@steelequities.com

O: 516-465-0000

Steel Equities

999 South Oyster Bay Road, Suite 200

Bethpage, New York 11714



Vladi Andrei

E: vandrei@SteelEquities.com

O: 516-465-0000

Jason Miller

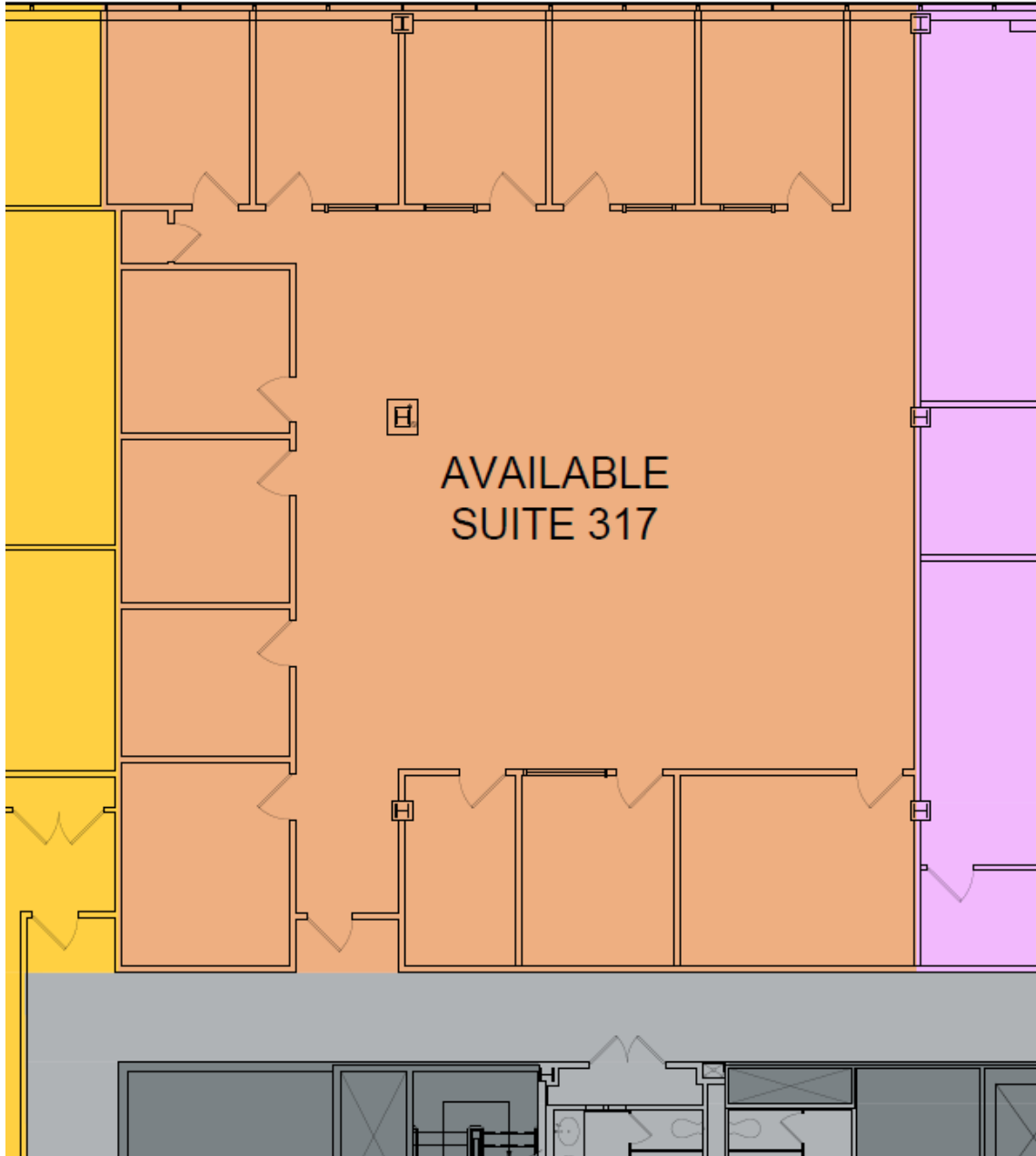
E: jmiller@steelequities.com

O: 516-465-0000

Steel Equities

999 South Oyster Bay Road, Suite 200

Bethpage, New York 11714

**Vladi Andrei**E: vandrei@SteelEquities.com

O: 516-465-0000

Jason MillerE: jmiller@steelequities.com

O: 516-465-0000

Steel Equities999 South Oyster Bay Road, Suite 200
Bethpage, New York 11714



CLASS "A" OFFICE SPACE LEASING OPPORTUNITY

Lake Success Business Park



Vladi Andrei

E: vandrei@SteelEquities.com

O: 516-465-0000

Jason Miller

E: jmiller@steelequities.com

O: 516-465-0000

Steel Equities

999 South Oyster Bay Road, Suite 200

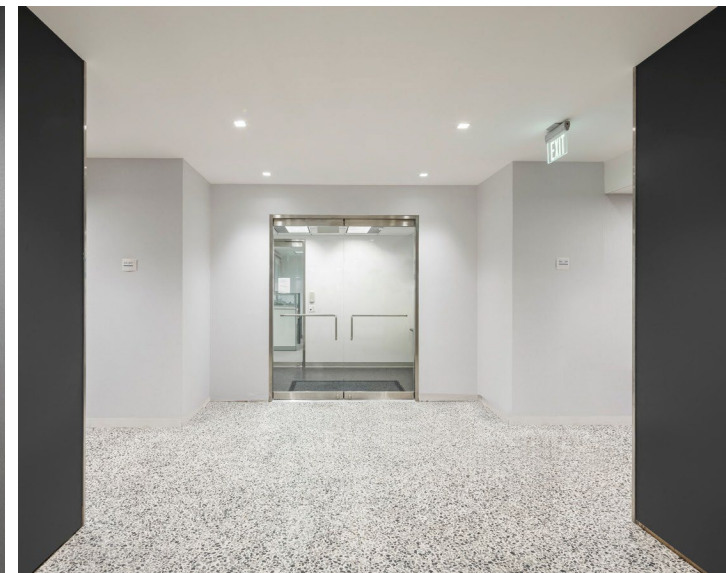
Bethpage, New York 11714

The information contained herein has either been provided by publicly available data or obtained from sources that we deem reliable. The information is subject to errors, omissions, modifications, and to any listing condition not otherwise provided. We have no reason to doubt the accuracy of the details herein but provide no guarantee to its reliability. All zoning, measurements, allowable uses and all other information herein must be independently verified.



CLASS "A" OFFICE SPACE LEASING OPPORTUNITY

Lake Success Business Park



Vladi Andrei

E: vandrei@SteelEquities.com

O: 516-465-0000

Jason Miller

E: jmiller@steelequities.com

O: 516-465-0000

Steel Equities

999 South Oyster Bay Road, Suite 200

Bethpage, New York 11714

The information contained herein has either been provided by publicly available data or obtained from sources that we deem reliable. The information is subject to errors, omissions, modifications, and to any listing condition not otherwise provided. We have no reason to doubt the accuracy of the details herein but provide no guarantee to its reliability. All zoning, measurements, allowable uses and all other information herein must be independently verified.