

INDUSTRIAL PROPERTY FOR LEASE

1111 Robeson St

Fayetteville, NC 28301



for more information

GARY FUTCH

Broker

O: 910.829.1617

C: 910.322.1496

gary@grantmurrayre.com

NEIL GRANT

Principal / Broker

O: 910.829.1617 x206

C: 910.818.3252

neil@grantmurrayre.com



Grant - Murray
REAL ESTATE, LLC

COMMERCIAL AND INVESTMENT BROKERAGE

150 N. McPherson Church Rd | Fayetteville, NC 28303 | www.grantmurrayre.com

1111 Robeson St
FAYETTEVILLE, NC 28301

PROPERTY DETAILS & HIGHLIGHTS

Property Type	Industrial
Property Subtype	Warehouse/Distribution
APN	0426-99-2500 ; 0426-89-9445
Building Size	24,684 SF
Lot Size	1.41 Acres

Located at 1111 Robeson St. in Fayetteville, this property is available for lease and offers office space, warehouses, and truck parking. The total area is around 23,056 square feet, with the office space covering about 1800 square feet and the warehouses totaling 21,056 square feet. Other features include three loading doors, rail access, and a high ceiling in the main warehouse. With its visible location and versatile zoning, it's suitable for various businesses like sales, storage, or recreation, making it a great leasing opportunity in Fayetteville's commercial scene.



for more information

GARY FUTCH

Broker

O: 910.829.1617

C: 910.322.1496

gary@grantmurrayre.com

NEIL GRANT

Principal / Broker

O: 910.829.1617 x206

C: 910.818.3252

neil@grantmurrayre.com

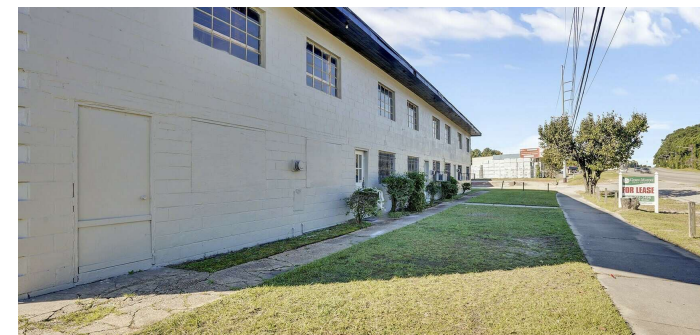


Grant - Murray
REAL ESTATE, LLC

COMMERCIAL AND INVESTMENT BROKERAGE

1111 Robeson St
FAYETTEVILLE, NC 28301

ADDITIONAL PHOTOS



for more information

GARY FUTCH

Broker

O: 910.829.1617

C: 910.322.1496

gary@grantmurrayre.com

NEIL GRANT

Principal / Broker

O: 910.829.1617 x206

C: 910.818.3252

neil@grantmurrayre.com



Grant - Murray
REAL ESTATE, LLC

COMMERCIAL AND INVESTMENT BROKERAGE

150 N. McPherson Church Rd | Fayetteville, NC 28303 | www.grantmurrayre.com

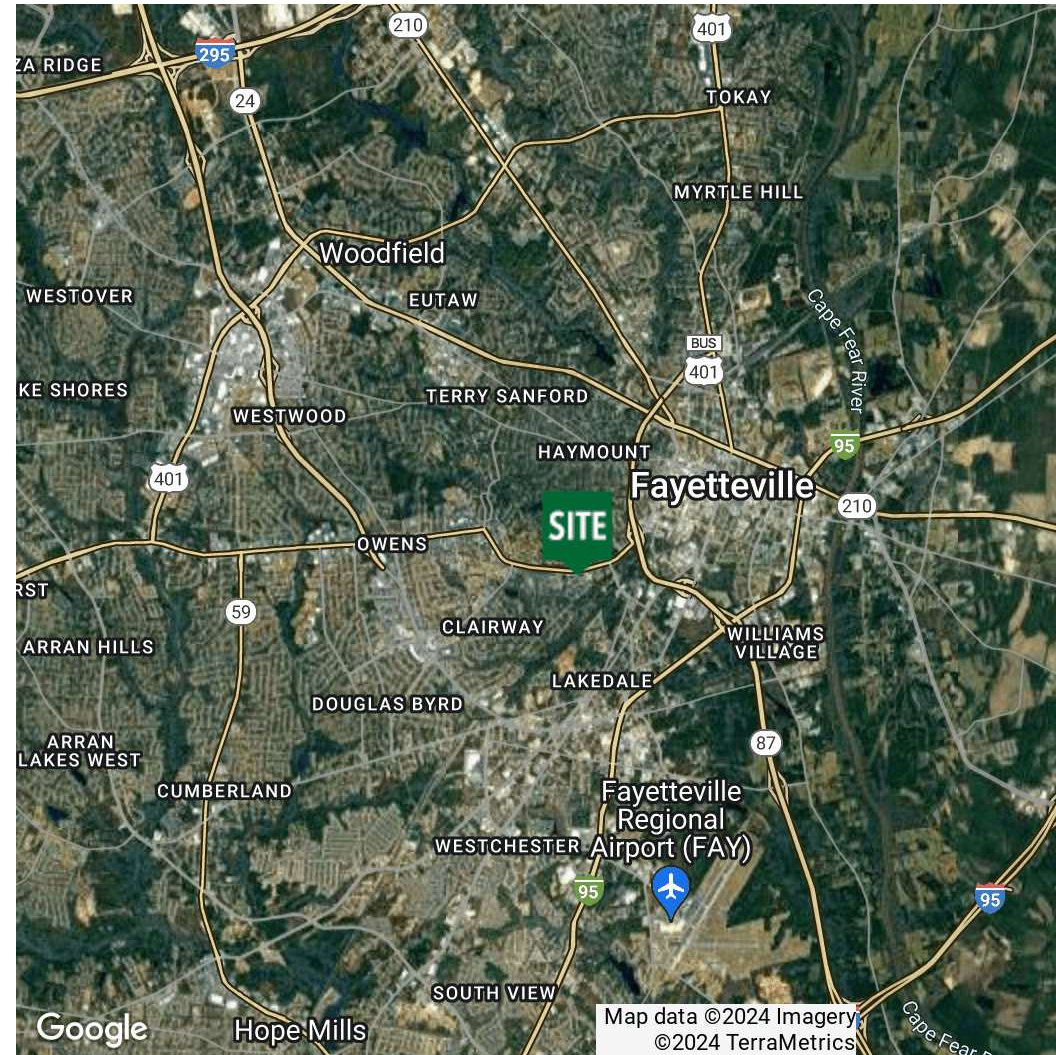
1111 Robeson St
FAYETTEVILLE, NC 28301

DEMOGRAPHICS MAP & REPORT

POPULATION	0.5 MILES	1 MILE	1.5 MILES
Total Population	991	4,839	11,930
Average Age	50.5	45.5	42.5
Average Age (Male)	38.4	38.1	37.3
Average Age (Female)	55.7	49.7	46.2

HOUSEHOLDS & INCOME	0.5 MILES	1 MILE	1.5 MILES
Total Households	594	2,554	6,087
# of Persons per HH	1.7	1.9	2.0
Average HH Income	\$70,263	\$63,112	\$60,124
Average House Value	\$239,139	\$229,699	\$205,579

2020 American Community Survey (ACS)



for more information

GARY FUTCH

Broker
 O: 910.829.1617
 C: 910.322.1496
 gary@grantmurrayre.com

NEIL GRANT

Principal / Broker
 O: 910.829.1617 x206
 C: 910.818.3252
 neil@grantmurrayre.com



Grant - Murray
 REAL ESTATE, LLC
 COMMERCIAL AND INVESTMENT BROKERAGE