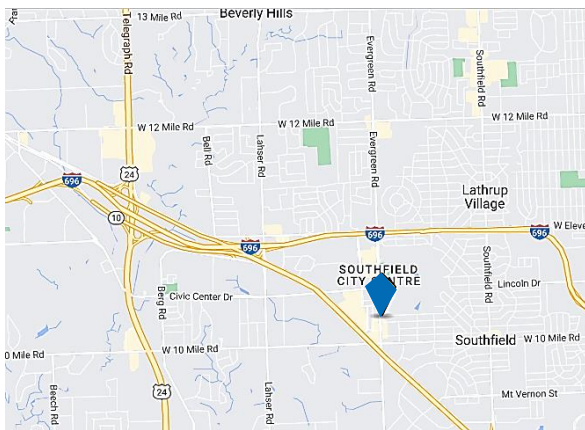




25354 Evergreen, Southfield, MI 48075



FOR LEASE

- 4,674 SF Free Standing Medical Office Building
- Located in the heart of Southfield CBD with ideal street appeal
- Great signage with approximately 15k traffic count per day
- Ample parking on-site and near building entrances
- Efficient layout with a mix of plumbed and non-plumbed exam rooms and offices
- Walking distance to several fast casuals restaurants, City Hall, etc.
- Convenient access to M-10 & I-696

For information, please contact:

Mike Valant

Managing Director

t 248-885-1395

Mike.Valant@nmrk.com

J.P. Champine

Managing Director

t 313-622-3634

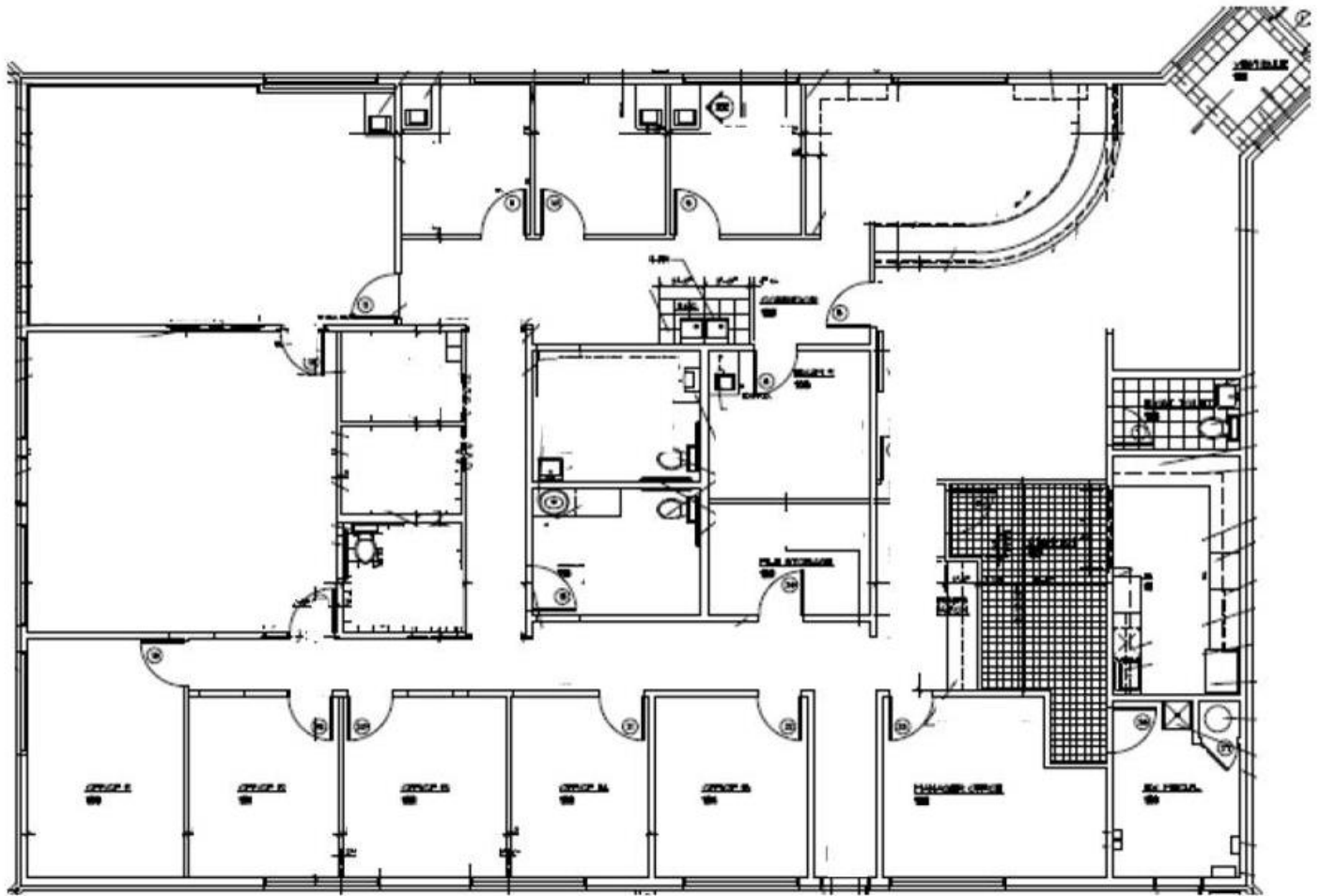
JP.Champine@nmrk.com

27725 Stansbury Blvd, Suite 300,
Farmington Hills, MI 48334

nmrk.com

NEWMARK

The information contained herein has been obtained from sources deemed reliable but has not been verified and no guarantee, warranty or representation, either express or implied, is made with respect to such information. Terms of sale or lease and availability are subject to change or withdrawal without notice.



CONTACT

Mike Valant

Managing Director

t 248-885-1395

Mike.Valant@nrmk.com

J.P. Champine

Managing Director

t 313-622-3634

JP.Champine@nrmk.com

27725 Stansbury Blvd, Suite 300,
Farmington Hills, MI 48334

nrmk.com

NEWMARK

The information contained herein has been obtained from sources deemed reliable but has not been verified and no guarantee, warranty or representation, either express or implied, is made with respect to such information. Terms of sale or lease and availability are subject to change or withdrawal without notice.