

**FOR LEASE | OFFICE WAREHOUSE**

## Mid-City Industrial Plaza

724 - 783 Harding Street NE, Minneapolis, MN 55413



Located near I-35W, Industrial Blvd, and Mid-City Industrial area in Minneapolis. Mid-City Industrial Plaza contains three separate buildings. It is one of the most centralized locations in the Twin Cities with readily available access from multiple highways, bringing clients and workforce conveniently to the site.

### Property Features

- Currently 1,500 to 10,300 SF available
- Dock and drive-in loading available
- Falling Knife Brewery on site
- 18' clear height



Tax & CAM \$7.04 psf plus shared utilities and janitorial costs



Comcast Business  
AT&T Business

### Contact Us

**ERIC DUEHOLM**

Partner



651.621.2550  
[eric@terracegroupllc.com](mailto:eric@terracegroupllc.com)

**BEN BRUNO**

Brokerage Services



651.621.2563  
[ben@terracegroupllc.com](mailto:ben@terracegroupllc.com)

**TONY ROSSATO**

Brokerage Services



651.621.2507  
[tony@terracegroupllc.com](mailto:tony@terracegroupllc.com)

**Full Property Information at:**  
[midcityindustrial.com](http://midcityindustrial.com)

**FOR LEASE | OFFICE WAREHOUSE**

**Mid-City Industrial Plaza**

724 - 783 Harding Street NE, Minneapolis, Minnesota 55413



**Destinations**

- Downtown Minneapolis
- Downtown St. Paul
- MSP International Airport
- West End, St. Louis Park

**Drive Time**

- 11 minutes
- 15 minutes
- 20 minutes
- 20 minutes



**ERIC DUEHOLM**  
Partner  
651.621.2550  
eric@terracegroupllc.com

**BEN BRUNO**  
Brokerage Services  
651.621.2563  
ben@terracegroupllc.com

**TONY ROSSATO**  
Brokerage Services  
651.621.2507  
tony@terracegroupllc.com

**Full Property Information at:**  
[midcityindustrial.com](http://midcityindustrial.com)

**FOR LEASE | OFFICE WAREHOUSE**

**Mid-City Industrial Plaza**

**724 - 783 Harding Street NE, Minneapolis, Minnesota 55413**



**ERIC DUEHOLM**

Partner

651.621.2550

[eric@terracegroupllc.com](mailto:eric@terracegroupllc.com)

**BEN BRUNO**

Brokerage Services

651.621.2563

[ben@terracegroupllc.com](mailto:ben@terracegroupllc.com)

**TONY ROSSATO**

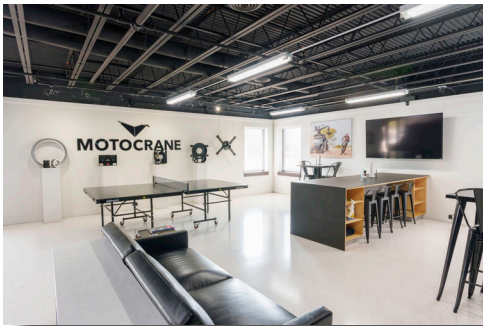
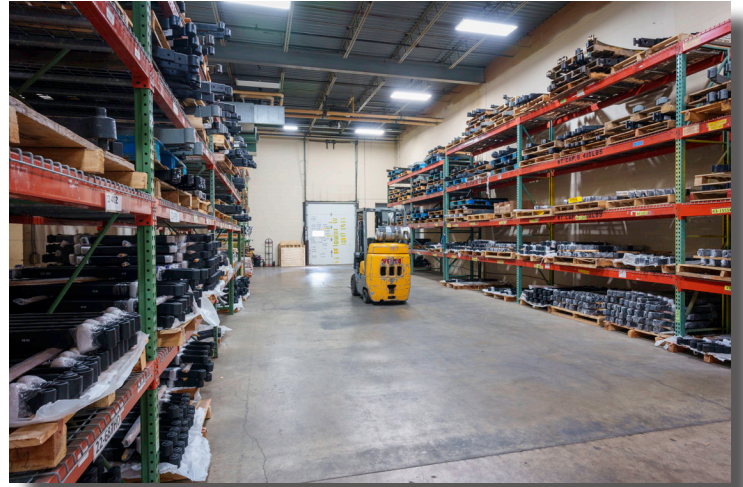
Brokerage Services

651.621.2507

[tony@terracegroupllc.com](mailto:tony@terracegroupllc.com)

**Full Property Information at:**  
**[midcityindustrial.com](http://midcityindustrial.com)**

**CURRENT TENANTS | OFFICE WAREHOUSE**  
**Mid-City Industrial Plaza**  
724 - 783 Harding Street NE, Minneapolis, Minnesota 55413



**ERIC DUEHOLM**  
Partner  
651.621.2550  
[eric@terracegroupllc.com](mailto:eric@terracegroupllc.com)

**BEN BRUNO**  
Brokerage Services  
651.621.2563  
[ben@terracegroupllc.com](mailto:ben@terracegroupllc.com)

**TONY ROSSATO**  
Brokerage Services  
651.621.2507  
[tony@terracegroupllc.com](mailto:tony@terracegroupllc.com)

**Full Property Information at:**  
[midcityindustrial.com](http://midcityindustrial.com)

**FOR LEASE | OFFICE WAREHOUSE**

**Mid-City Industrial Plaza**

724 - 783 Harding Street NE, Minneapolis, Minnesota 55413



## Available Suites - Building A



**ERIC DUEHOLM**

Partner

651.621.2550

[eric@terracegroupllc.com](mailto:eric@terracegroupllc.com)

**BEN BRUNO**

Brokerage Services

651.621.2563

[ben@terracegroupllc.com](mailto:ben@terracegroupllc.com)

**TONY ROSSATO**

Brokerage Services

651.621.2507

[tony@terracegroupllc.com](mailto:tony@terracegroupllc.com)

**Full Property Information at:**  
[midcityindustrial.com](http://midcityindustrial.com)

**FOR LEASE | OFFICE WAREHOUSE**

**Mid-City Industrial Plaza**

724 - 783 Harding Street NE, Minneapolis, Minnesota 55413



## Suite 771 - 783 - 2nd Floor Office Space

- 6,238 square feet
- Divisible to 1,500 square feet
- Affordable gross rates, including utilities
- Improvement package available
- Functional, very affordable office space



**ERIC DUEHOLM**

Partner

651.621.2550

[eric@terracegroupllc.com](mailto:eric@terracegroupllc.com)

**BEN BRUNO**

Brokerage Services

651.621.2563

[ben@terracegroupllc.com](mailto:ben@terracegroupllc.com)

**TONY ROSSATO**

Brokerage Services

651.621.2507

[tony@terracegroupllc.com](mailto:tony@terracegroupllc.com)

**Full Property Information at:**  
[midcityindustrial.com](http://midcityindustrial.com)

**FOR LEASE | OFFICE WAREHOUSE**

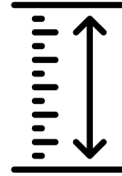
**Mid-City Industrial Plaza**

724 - 783 Harding Street NE, Minneapolis, Minnesota 55413

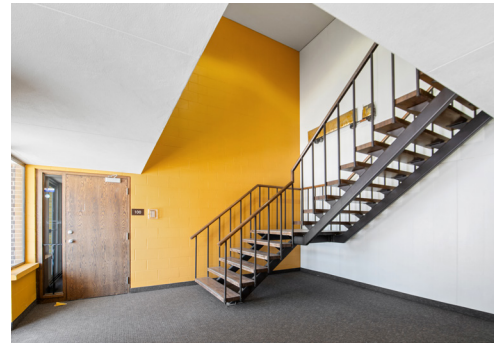


## Suite 777 - 150

- 3,388 square feet
- 1 dock door
- Polished concrete floors in office
- Estimated as-is monthly gross rent of \$4,389
- Improvement package available
- Additional CAM costs include shared utilities and janitorial



18' clear height



**ERIC DUEHOLM**

Partner

651.621.2550

[eric@terracegroupllc.com](mailto:eric@terracegroupllc.com)

**BEN BRUNO**

Brokerage Services

651.621.2563

[ben@terracegroupllc.com](mailto:ben@terracegroupllc.com)

**TONY ROSSATO**

Brokerage Services

651.621.2507

[tony@terracegroupllc.com](mailto:tony@terracegroupllc.com)

**Full Property Information at:**  
[midcityindustrial.com](http://midcityindustrial.com)

**FOR LEASE | OFFICE WAREHOUSE**

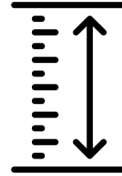
**Mid-City Industrial Plaza**

724 - 783 Harding Street NE, Minneapolis, Minnesota 55413



## Suite 783 - 150

- 6,920 square feet
- 1 dock door and 1 drive-in door
- Estimated as-is monthly gross rent of \$8,961
- Improvement package available
- Additional CAM costs include shared utilities and janitorial



18' clear height



**ERIC DUEHOLM**

Partner

651.621.2550

[eric@terracegroupllc.com](mailto:eric@terracegroupllc.com)

**BEN BRUNO**

Brokerage Services

651.621.2563

[ben@terracegroupllc.com](mailto:ben@terracegroupllc.com)

**TONY ROSSATO**

Brokerage Services

651.621.2507

[tony@terracegroupllc.com](mailto:tony@terracegroupllc.com)

**Full Property Information at:**  
[midcityindustrial.com](http://midcityindustrial.com)

FOR LEASE | OFFICE WAREHOUSE

Mid-City Industrial Plaza

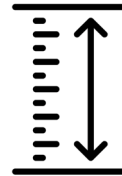
724 - 783 Harding Street NE, Minneapolis, Minnesota 55413



## Available Suite - Building B

### Suite 725

- 3,805 square feet
- Available immediately
- Office Space with full kitchenette
- 2 restrooms
- Dock door
- Second storage area in warehouse with separate exterior entrance



18' clear height



*Information is deemed reliable; however, no warranty or representation is made as to its accuracy or completeness. Property is subject to price change, prior sale or lease, and withdrawal from the market, all without notice.*

ERIC DUEHOLM  
Partner

651.621.2550

[eric@terracegroupllc.com](mailto:eric@terracegroupllc.com)

BEN BRUNO  
Brokerage Services

651.621.2563

[ben@terracegroupllc.com](mailto:ben@terracegroupllc.com)

TONY ROSSATO  
Brokerage Services

651.621.2507

[tony@terracegroupllc.com](mailto:tony@terracegroupllc.com)

Full Property Information at:  
[midcityindustrial.com](http://midcityindustrial.com)