

For Lease

Warehouse

115,187 SF



4301 121st Street

Urbandale, Iowa 50323

Property Highlights

- For Lease: 115,187 Square Feet
- Base Rent: \$5.50/sf NNN
- Clear Height: 30 Feet
- 14 Dock Doors
- Adjacent to Interstate 80/35
- Zoning: PUD
- Operating Expenses: Available Upon Request

Location Description

Property is located on 121st Street in the heart of the Urbandale industrial corridor. The site has convenient access to Interstate 80/35 at Meredith Drive to the north and Douglas Avenue to the south.

OFFERING SUMMARY

Available SF	115,187 SF
Lease Rate	\$5.50 SF/yr (NNN)
Building Size	367,386 SF

DEMOGRAPHICS

Stats	Population	Avg. HH Income
1 Mile	3,097	\$253,263
3 Miles	51,745	\$148,286
5 Miles	190,753	\$128,413

For more information

Kevin Crowley, SIOR

C: 515 991 7000
kcrowley@iowarealtycommercial.com

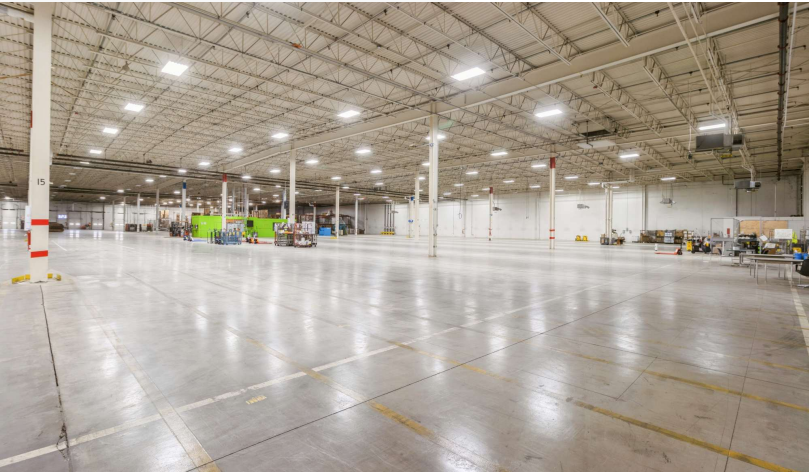
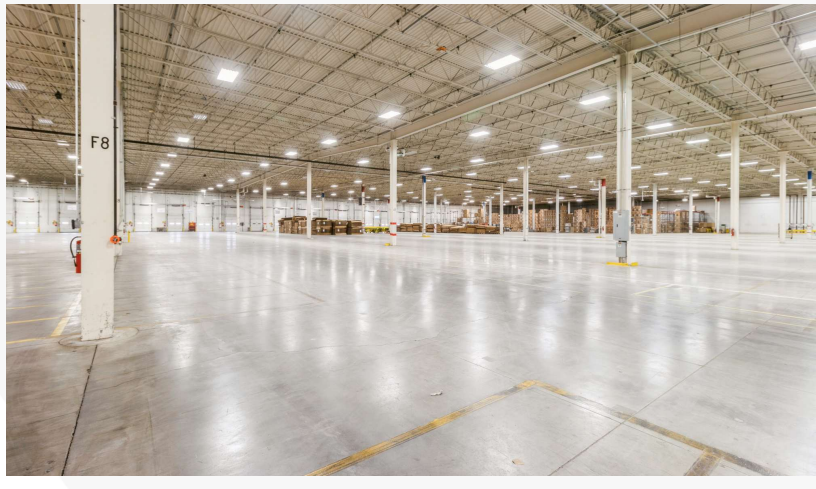
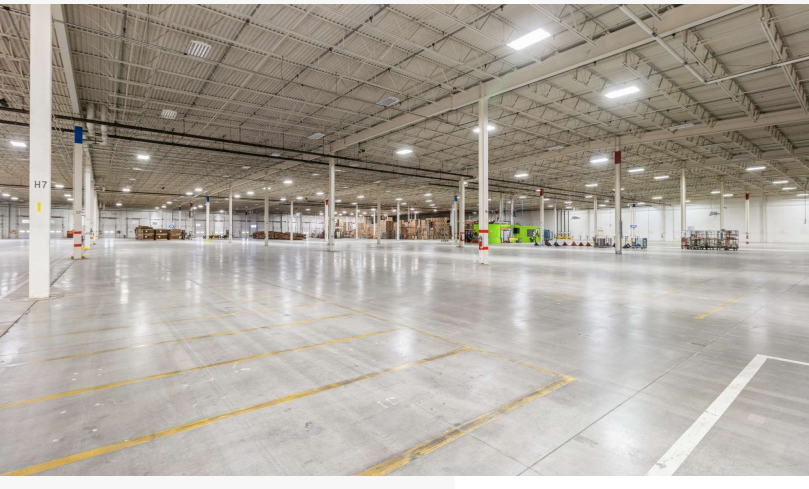
Doug Pfeil

C: 515 419 9546
dpfeil@iowarealtycommercial.com

For Lease

Warehouse

115,187 SF | \$5.50 SF/yr



For Lease

Floor Plan

115,187 SF | \$5.50 SF/yr



For Lease

Warehouse

115,187 SF | \$5.50 SF/yr

