

# Greenwood Medical Center

7180 East Orchard Road  
Centennial Colorado



## Property Details

- Building Size: 41,642 Square Feet
- Rental Rate: \$22.50 NNN
- 2025 Estimated Operating Expenses: \$14.08
- Generous Tenant Improvement Packages

## Available Suites

Suite 103: 5,711 SF	Suite 202: 2,050 SF
Suite 107: 3,920 SF	Suite 204: 775 SF
Suite 110: 757 SF	Suite 210: 1,291 SF
Suite 201: 1,766 SF	



For More Information Please Contact:

Marc Holmes (720) 939-6741  
[marc.holmes@elevationcompanies.com](mailto:marc.holmes@elevationcompanies.com)

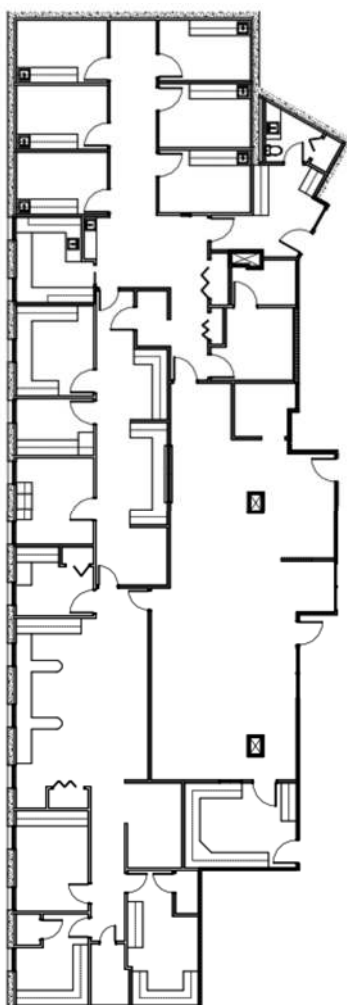
Mariné Castro (720) 448-6557  
[marine.castro@elevationcompanies.com](mailto:marine.castro@elevationcompanies.com)

[www.elevationcompanies.com](http://www.elevationcompanies.com)





Suite 103  
5,711 Square Feet



### Property Highlights:

- Located in the Denver Tech Center a short distance from Swedish Medical Center, HealthONE Centennial and Littleton-Porter Adventist Hospital.
- Tenancy includes Cornerstone Health Community, Amavi Aesthetic Surgery and West Metro Pediatric Dentistry.
- Recently renovated interior with new LED lighting, common area finishes and upgraded signage.

