

# Professional Office for Lease \$32/PSF

Hayden Park - 10617 N. Hayden Road, Suite B-109 | Scottsdale, AZ 85260



## Property Details

- S-R Zoning, City of Scottsdale •

Located on the NEC of Shea Blvd & Hayden Rd

- Complete High-End Renovation 2025
- Professional Office Space

- Suite B-109 ±885 SF - Available March, 2025 • Suite Includes: Reception Area, Kitchenette, 2 Private Offices and Conference Room
- Exclusive Monument Signage
- Floor Plan Attached

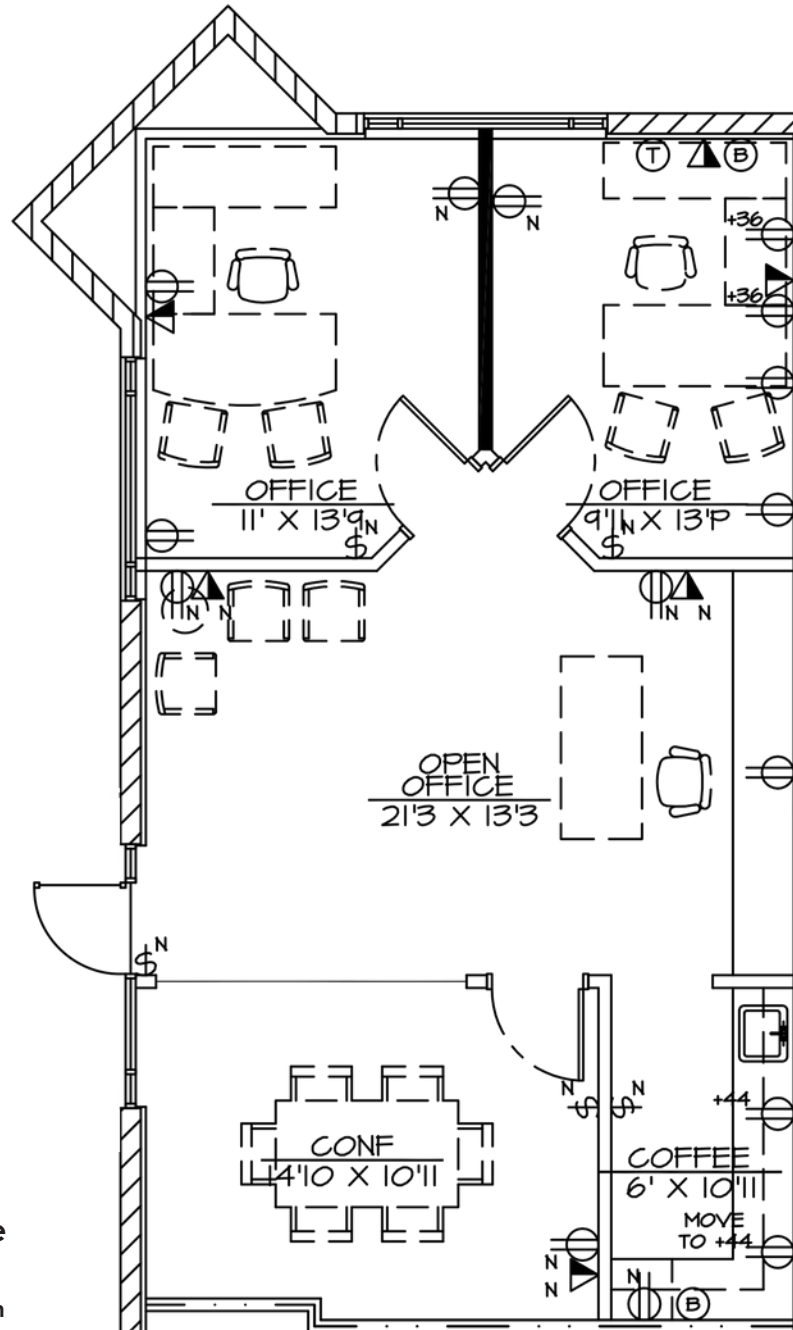
**Sharon Benson**   **Regina Guyette**  
D:(480)729-6263   D:(480)729-6263  
M:(602)743-3238   M:(602)319-6785  
Sharon@Guycor.com   Regina@Guycor.com



5635 N. Scottsdale Rd, Suite 170 | (480) 729-6263

# Hayden Park - 10617 N. Hayden Road, Suite B-109 | Scottsdale, AZ 85260

±885 SF Consisting of Reception Area, Kitchenette, 2 Private Offices and Conference Room



Interior Measurements Only  
Note: Approximate Office/Premises  
measurements not to scale.



**Sharon Benson** | **Regina Guyette**  
D:(480)729-6263 | D:(480)729-6263  
M:(602)743-3238 | M:(602)319-6785  
Sharon@Guycor.com | Regina@Guycor.com

5635 N. Scottsdale Rd, Suite 170 | (480) 729-6263



# Professional Office for Lease \$32/PSF

Hayden Park - 10617 N. Hayden Road, Suite B-109 | Scottsdale, AZ 85260



**Sharon Benson**   **Regina Guyette**  
D:(480)729-6263   D:(480)729-6263  
M:(602)743-3238   M:(602)319-6785  
Sharon@Guycor.com   Regina@Guycor.com



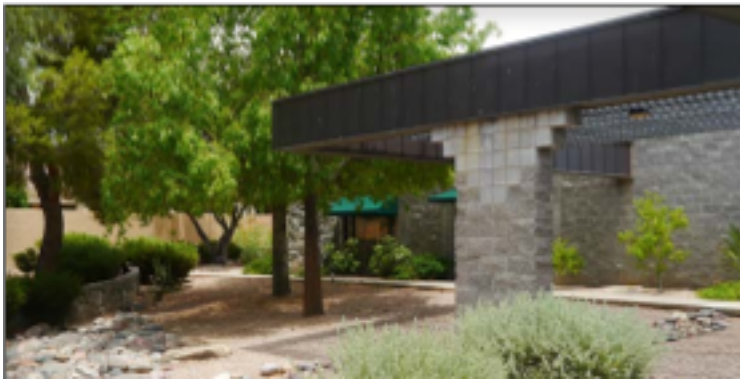
5635 N. Scottsdale Rd, Suite 170 | (480) 729-6263

The information contained herein has been obtained from various sources. We have no reason to doubt its accuracy; however, GuyCor Management and Development has not verified such information and makes no guarantee, warranty or representation about such information. The prospective buyer or lessee should independently verify all dimensions, specifications, floor plans, and all information prior to the lease or purchase of the property. All offerings are subject to price change, prior sale, lease, or withdrawal from the market without prior notice. Effective 1/14/2025



# Professional Office for Lease \$32/PSF

Hayden Park - 10617 N. Hayden Road, Suite B-109 | Scottsdale, AZ 85260



**Sharon Benson**   **Regina Guyette**  
D:(480)729-6263   D:(480)729-6263  
M:(602)743-3238   M:(602)319-6785  
Sharon@Guycor.com   Regina@Guycor.com



5635 N. Scottsdale Rd, Suite 170 | (480) 729-6263

The information contained herein has been obtained from various sources. We have no reason to doubt its accuracy; however, GuyCor Management and Development has not verified such information and makes no guarantee, warranty or representation about such information. The prospective buyer or lessee should independently verify all dimensions, specifications, floor plans, and all information prior to the lease or purchase of the property. All offerings are subject to price change, prior sale, lease, or withdrawal from the market without prior notice. Effective 1/14/2025