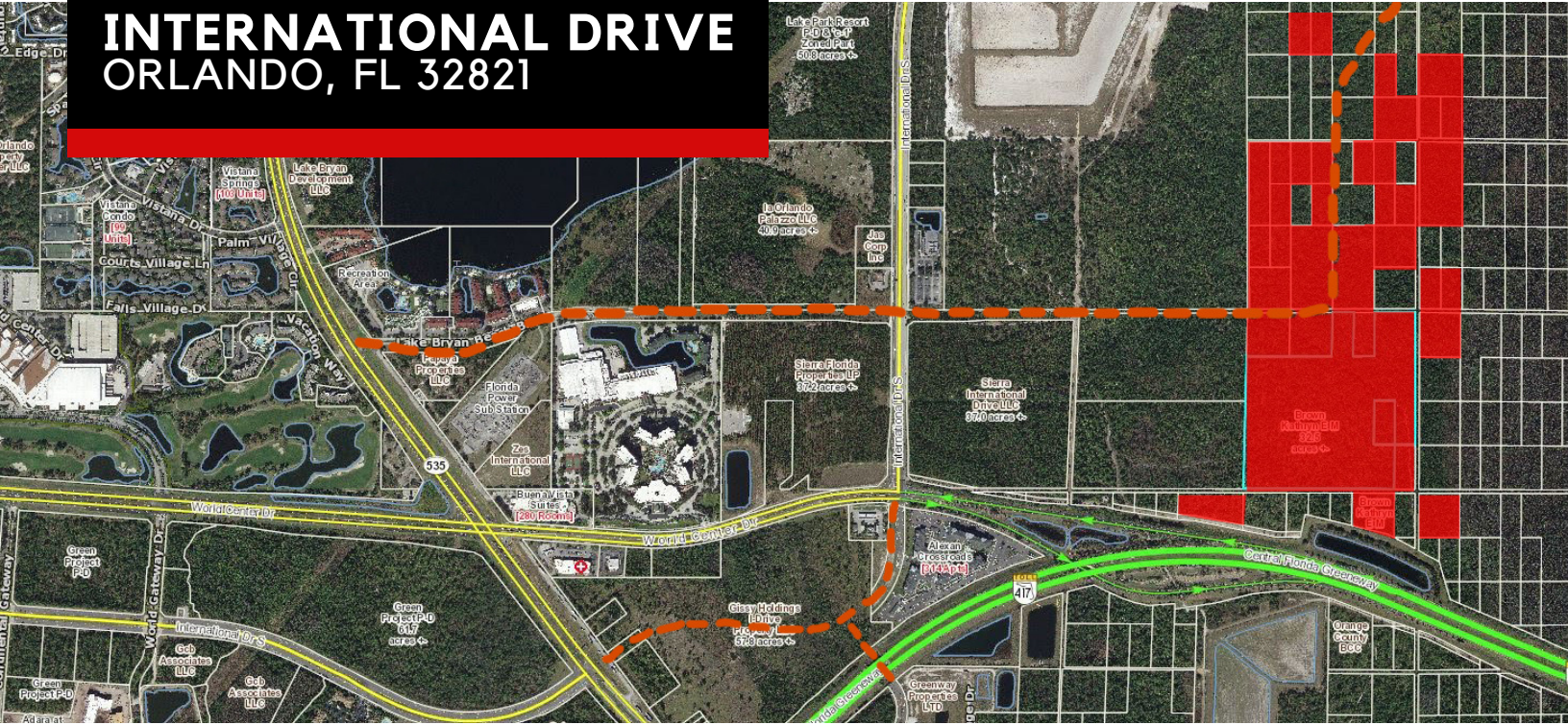


**\$22,500,000**

**INTERNATIONAL DRIVE  
ORLANDO, FL 32821**



# VACANT ACREAGE FOR SALE

Long-term commercial development opportunity. No infrastructure is currently in place but a planned road is proposed to be constructed near the parcels to provide easy access. This conglomeration of parcels is currently up to 45 acres listed with a possibility of another 10-15 additional acres. These parcels can be purchased together, or in part. These parcels are located at the south edge of I-Drive with easy access to State Road 417 (GreeneWay) including a direct drive to Orlando International Airport in twenty minutes and just a few miles away to Interstate 4 (I-4), the central corridor of the state. Three world famous theme parks and resorts are located less than five (5) miles from this property while the Orange County Convention Center is conveniently located 6 miles north. Twenty-five (25) miles east of this property is downtown Orlando and headed west, in just an hour, you can be in Tampa, Florida.

- Combined 90+ Acres
- 3,110,400 Sqft
- A-2 Zoning
- Partially Wooded
- \$250,000 / Acre



**MIKE FLAHAVEN**  
COMMERCIAL REALTOR®

Mike@YourFloridaHaven.com  
YourFloridaHaven.com

407-340-5291



WEMERT GROUP  
COMMERCIAL



**JIM LIGHT**  
COMMERCIAL REALTOR®

JLight@WemertGroupRealty.com  
WemertGroupRealty.com

321-418-5513