

2ND FLOOR PROFESSIONAL/MEDICAL CONDO FOR LEASE

PRICE	INQUIRE
APPROX SIZE	626 SQ FT
TERM	NEGOTIABLE
POSSESSION	IMMEDIATE



20 EAST 68TH STREET, SUITE 212
LENOX HILL, MANHATTAN, NY 10065

LOCATION

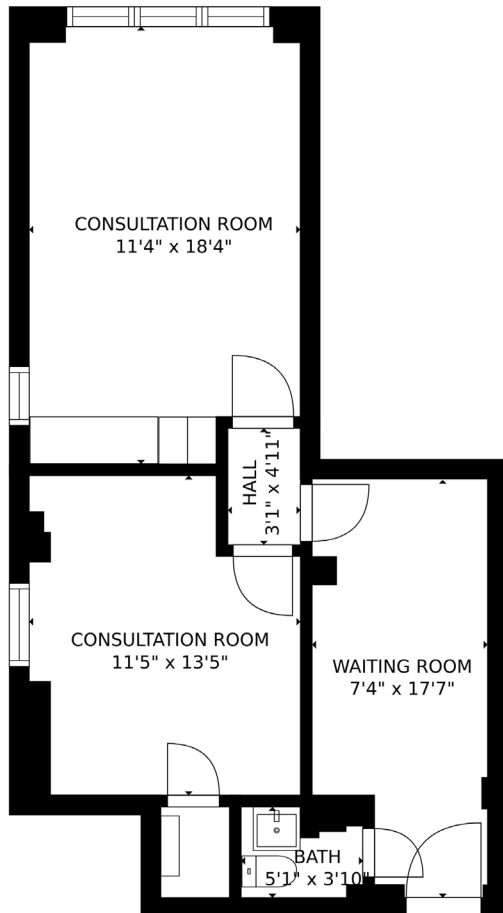
- CORNER OF MADISON AVE AND EAST 68TH STREET

LAYOUT

- 1 WAITING ROOM
- 2 CONSULTS
- 1 RESTROOM

ADDITIONAL FEATURES

- ACCESSIBLE VIA ELEVATOR AND STAIRS



FLOOR PLAN FOR ILLUSTRATIVE PURPOSES ONLY



Paul L Wexler

LICENSED ASSOCIATE
REAL ESTATE BROKER

P: 212.836.1075
E: PLW@corcoran.com

Alisia Ramlochan

LICENSED ASSOCIATE
REAL ESTATE BROKER

P: 212.893.1450
E: alisia.ramlochan@corcoran.com

Cosmin Bitu

LICENSED ASSOCIATE
REAL ESTATE BROKER

P: 917.602.5754
E: cosmin.bitu@corcoran.com

Kathleen Caracappa

LICENSED REAL ESTATE
SALESPERSON

P: 212.893.1441
E: kathleen.caracappa@corcoran.com

Josef Yadgarov

LICENSED ASSOCIATE
REAL ESTATE BROKER

P: 212.836.1097
E: josef.yadgarov@corcoran.com

Elliot Dennis

LICENSED REAL ESTATE
SALESPERSON

P: 212.893.1746
E: elliot.dennis@corcoran.com

Kurt Herold

LICENSED ASSOCIATE
REAL ESTATE BROKER

P: 212.323.3817
E: kherold@corcoran.com