

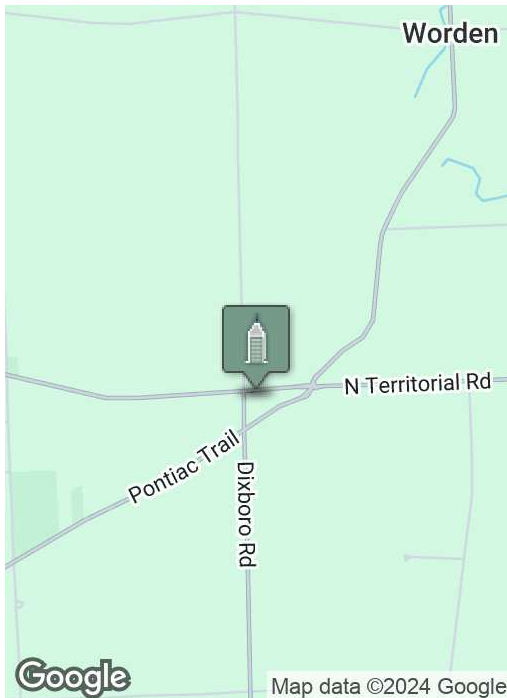
# Office / Dental / Medical - Salem Twp

5240 NORTH TERRITORIAL , ANN ARBOR, MI 48105



**Swisher**  
COMMERCIAL

**FOR SALE**



## SUMMARY

Sale Price:	\$375,000
Lot Size:	1.51 Acres
Year Built:	1925
Parcel #:	A-01-30-300-029/043
Zoning:	OC (Office - Commercial)

## PROPERTY HIGHLIGHTS

- 1,628 SF farm house currently used as dental office
- Corner lot
- Versatile space: dental, general or medical office
- Basement Storage
- Ample Parking
- Over 1.5 acres with easy expansion possibilities
- Salem Township

***Building  
relationships.***

208 East Washington Street Ann Arbor, MI 48104

734.663.0501

**Bart Wise**

734.358.0354

BARTW@SWISHERCOMMERCIAL.COM

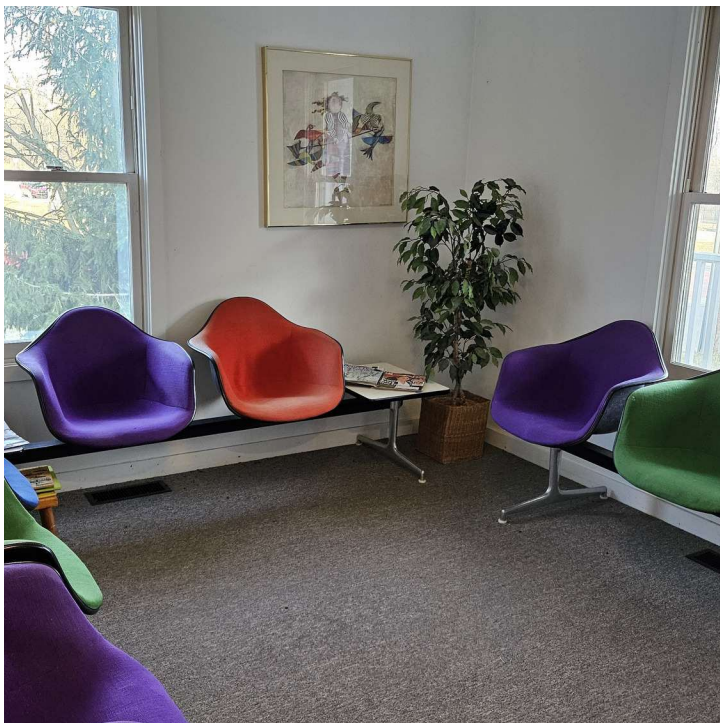
SWISHERCOMMERCIAL.COM

# Office / Dental / Medical for Sale

5240 NORTH TERRITORIAL , ANN ARBOR, MI 48105



**Swisher**  
COMMERCIAL



***Building  
relationships.***

208 East Washington Street Ann Arbor, MI 48104

734.663.0501

Bart Wise

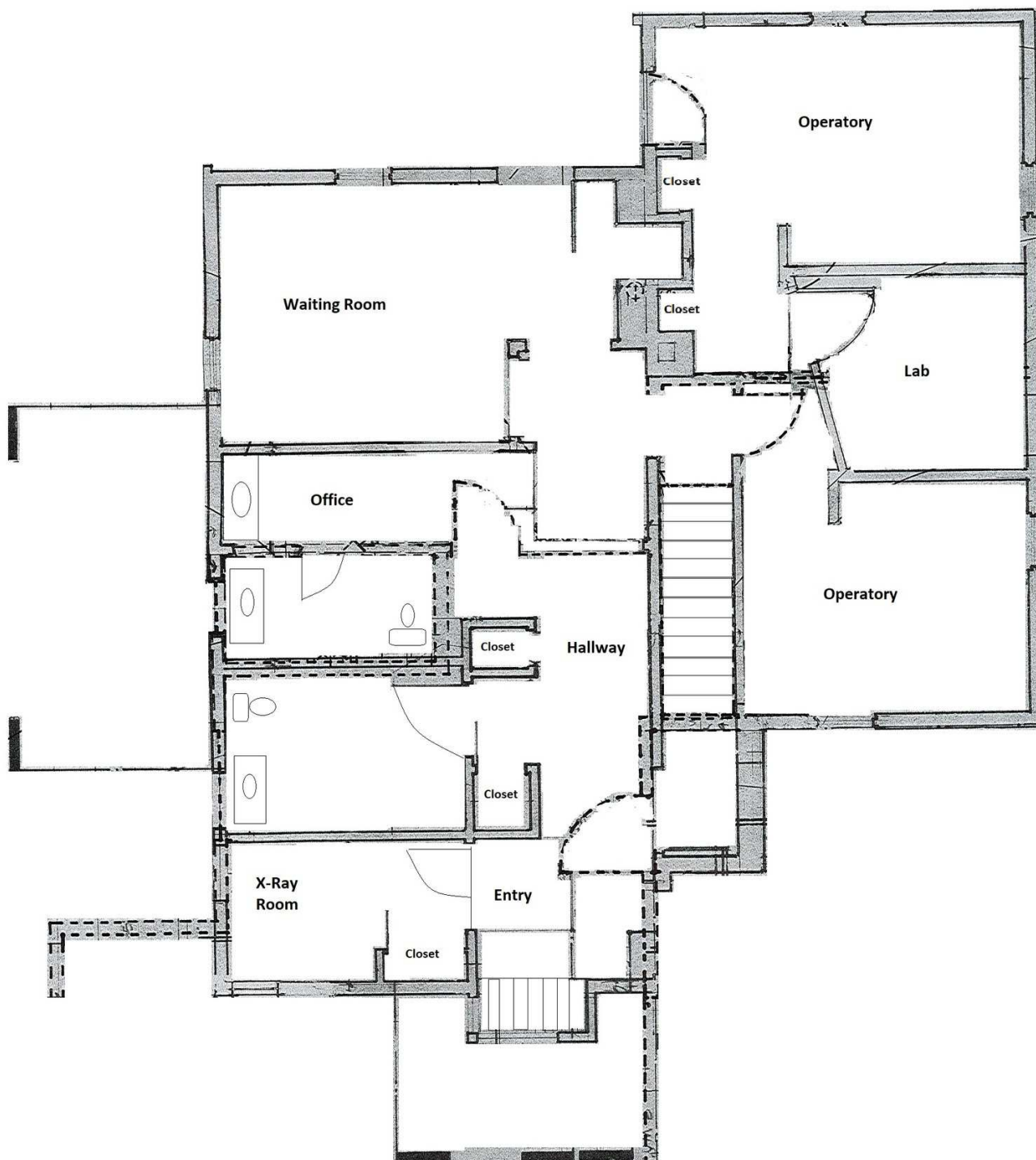
734.358.0354

BARTW@SWISHERCOMMERCIAL.COM

SWISHERCOMMERCIAL.COM

# Office / Dental / Medical for Sale

5240 NORTH TERRITORIAL , ANN ARBOR, MI 48105



***Building relationships.***

208 East Washington Street Ann Arbor, MI 48104

734.663.0501

Bart Wise

734.358.0354

BARTW@SWISHERCOMMERCIAL.COM

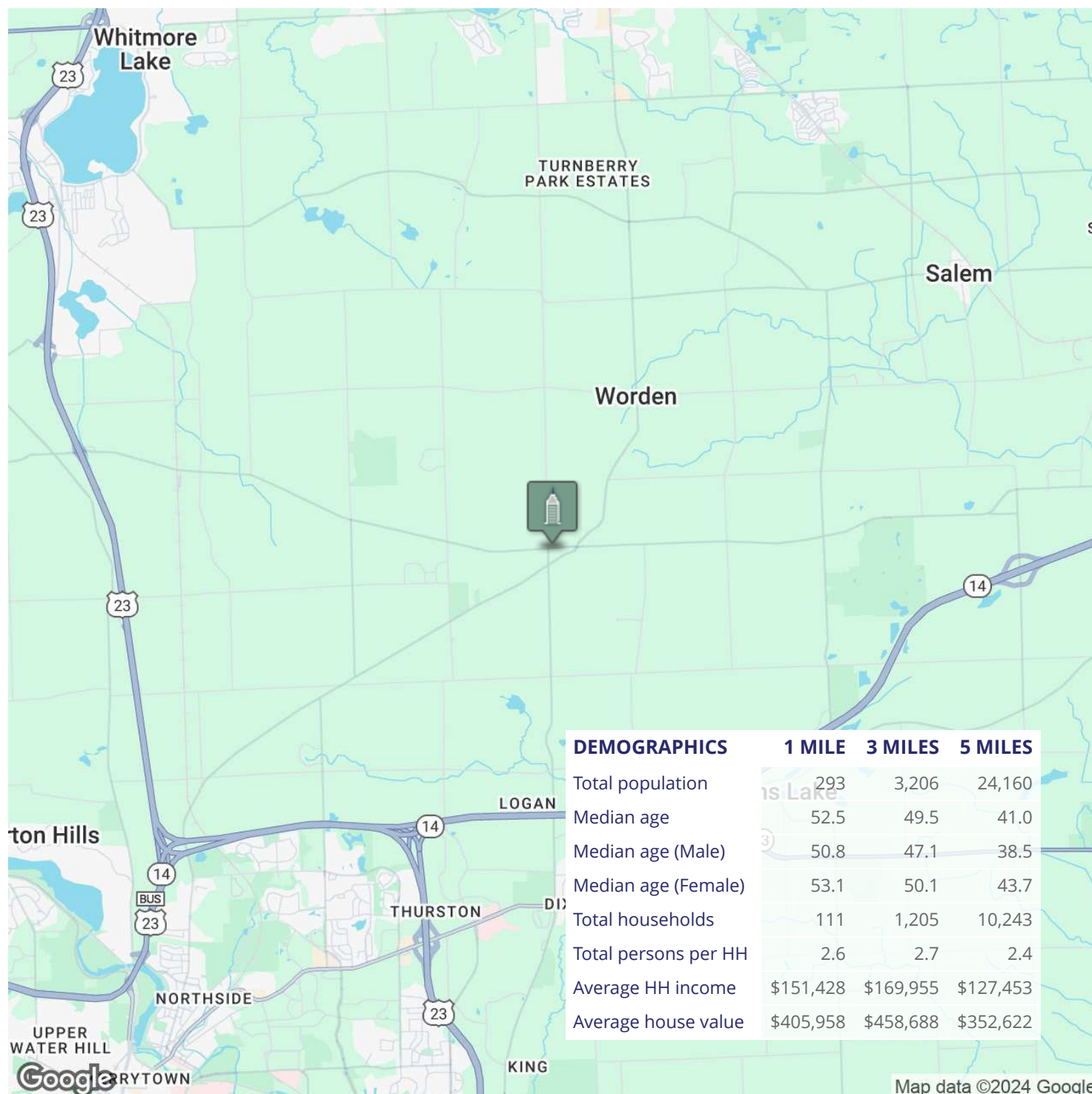
SWISHERCOMMERCIAL.COM

# Office / Dental / Medical for Sale

5240 NORTH TERRITORIAL , ANN ARBOR, MI 48105



**Swisher**  
COMMERCIAL



**Building  
relationships.**

208 East Washington Street Ann Arbor, MI 48104

734.663.0501

Bart Wise

734.358.0354

BART@SWISHERCOMMERCIAL.COM

SWISHERCOMMERCIAL.COM