



# OFFICE BUILDING IN THE HEART OF OCEAN SPRINGS

998 N Halstead Rd, Ocean Springs, MS 39564

**MONTE LUFFEY • PRINCIPAL** OFFICE: 228.276.2700  
MOBILE: 228.547.1953  
mluffey@southeastcre.com

**TIM CARLSON • PRINCIPAL** OFFICE: 228.276.2700  
MOBILE: 228.547.0707  
tcarlson@southeastcre.com



## PROPERTY DESCRIPTION

This 8,000 SF, two-story office building offered FOR LEASE is located just off of Bienville Boulevard in Ocean Springs, MS. This building was previously used as a pharmacy, which features a convenient drive-up window, stained concrete floors, an elevator, and other modern amenities. The space is divided into two office spaces, each 4,000 SF.

Located in the vibrant city of Ocean Springs, known for its charming coastal atmosphere and thriving local economy, this prime location offers easy access, making it ideal for businesses seeking a notable presence. This office building provides both practicality and convenience.

## PROPERTY HIGHLIGHTS

- High Traffic Location
- Located in Thriving Ocean Springs Community
- Drive-Up Window
- Elevator
- Ample Parking

## OFFERING SUMMARY

Sale Price:	\$1,690,000
Lease Rate:	\$15.00 PSF (NNN)
Building Size:	8,000 SF (2 Units, 4,000 SF Each)
Lot Size:	0.45 Acres

## OFFICE BUILDING FOR SALE OR LEASE

### PROPERTY SUMMARY







# OFFICE BUILDING IN THE HEART OF OCEAN SPRINGS

998 N Halstead Rd, Ocean Springs, MS 39564

**MONTE LUFFEY • PRINCIPAL**

OFFICE: 228.276.2700

MOBILE: 228.547.1953

[mluffey@southeastcre.com](mailto:mluffey@southeastcre.com)

**TIM CARLSON • PRINCIPAL**

OFFICE: 228.276.2700

MOBILE: 228.547.0707

[tcarlson@southeastcre.com](mailto:tcarlson@southeastcre.com)



OFFICE BUILDING FOR SALE OR LEASE

**ADDITIONAL PHOTOS**

SOUTHEAST COMMERCIAL REAL ESTATE | 2310 19th Street Gulfport, MS 39501 | <https://southeastcre.com>



**SOUTHEAST  
COMMERCIAL**  
REAL ESTATE





# OFFICE BUILDING IN THE HEART OF OCEAN SPRINGS

998 N Halstead Rd, Ocean Springs, MS 39564

MONTE LUFFEY • PRINCIPAL

OFFICE: 228.276.2700

MOBILE: 228.547.1953

mluffey@southeastcre.com

TIM CARLSON • PRINCIPAL

OFFICE: 228.276.2700

MOBILE: 228.547.0707

tcarlson@southeastcre.com



OFFICE BUILDING FOR LEASE

ADDITIONAL PHOTOS







# OFFICE BUILDING IN THE HEART OF OCEAN SPRINGS

998 N Halstead Rd, Ocean Springs, MS 39564

MONTE LUFFEY • PRINCIPAL

OFFICE: 228.276.2700

MOBILE: 228.547.1953

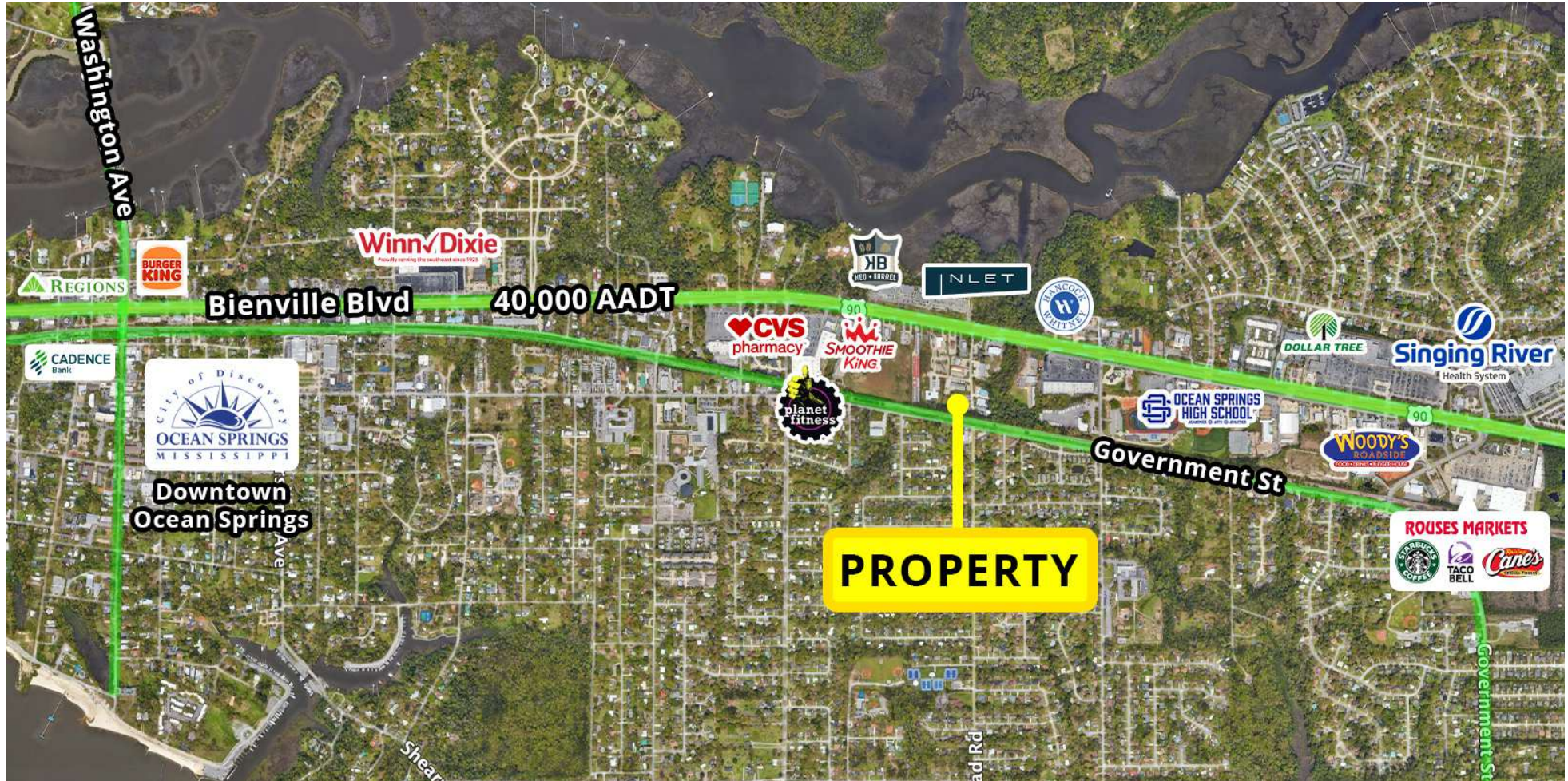
mluffey@southeastcre.com

TIM CARLSON • PRINCIPAL

OFFICE: 228.276.2700

MOBILE: 228.547.0707

tcarlson@southeastcre.com



OFFICE BUILDING FOR SALE OR LEASE

AERIAL

SOUTHEAST COMMERCIAL REAL ESTATE | 2310 19th Street Gulfport, MS 39501 | <https://southeastcre.com>



**SOUTHEAST  
COMMERCIAL**  
REAL ESTATE





# OFFICE BUILDING IN THE HEART OF OCEAN SPRINGS

998 N Halstead Rd, Ocean Springs, MS 39564

MONTE LUFFEY • PRINCIPAL

OFFICE: 228.276.2700

MOBILE: 228.547.1953

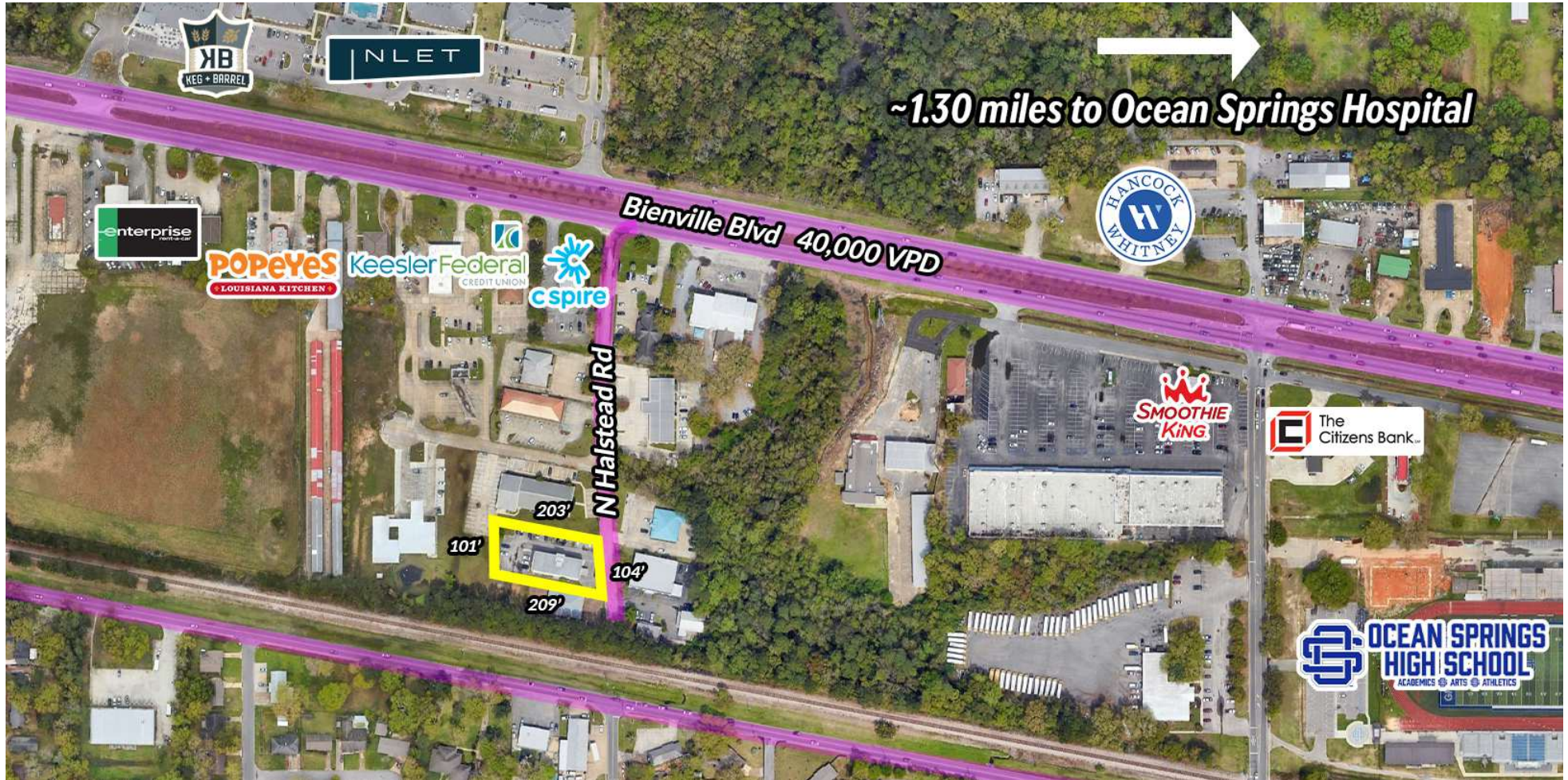
mluffey@southeastcre.com

TIM CARLSON • PRINCIPAL

OFFICE: 228.276.2700

MOBILE: 228.547.0707

tcarlson@southeastcre.com



OFFICE BUILDING FOR SALE OR LEASE

AERIAL



SOUTHEAST  
COMMERCIAL  
REAL ESTATE

SOUTHEAST COMMERCIAL REAL ESTATE | 2310 19th Street Gulfport, MS 39501 | <https://southeastcre.com>







# OFFICE BUILDING IN THE HEART OF OCEAN SPRINGS

998 N Halstead Rd, Ocean Springs, MS 39564

MONTE LUFFEY • PRINCIPAL

OFFICE: 228.276.2700

MOBILE: 228.547.1953

mluffey@southeastcre.com

TIM CARLSON • PRINCIPAL

OFFICE: 228.276.2700

MOBILE: 228.547.0707

tcarlson@southeastcre.com



**\$88,084**

Average Household Income  
within 10 minutes of site.



**42.3**

Median Age  
Within 10 minutes of site.



**12,289**

Number of housing units  
within 10 minutes of site.

2024 Demographics	3 Minutes	5 Minutes	10 Minutes
Population	2,618	9,611	27,179
Average HH Income	\$90,434	\$94,709	\$88,084

---

2029 Projections	3 Minutes	5 Minutes	10 Minutes
Population	2,659	9,525	27,280
Average HH Income	\$103,141	\$108,175	\$99,807

## Travel Time to Site

- 3 Minutes
- 5 Minutes
- 10 Minutes

OFFICE BUILDING FOR SALE OR LEASE

## AREA DEMOGRAPHICS

