



**LEASE**

## Creekside Office Park

**9633 LEVIN ROAD NW**

Silverdale, WA 98383

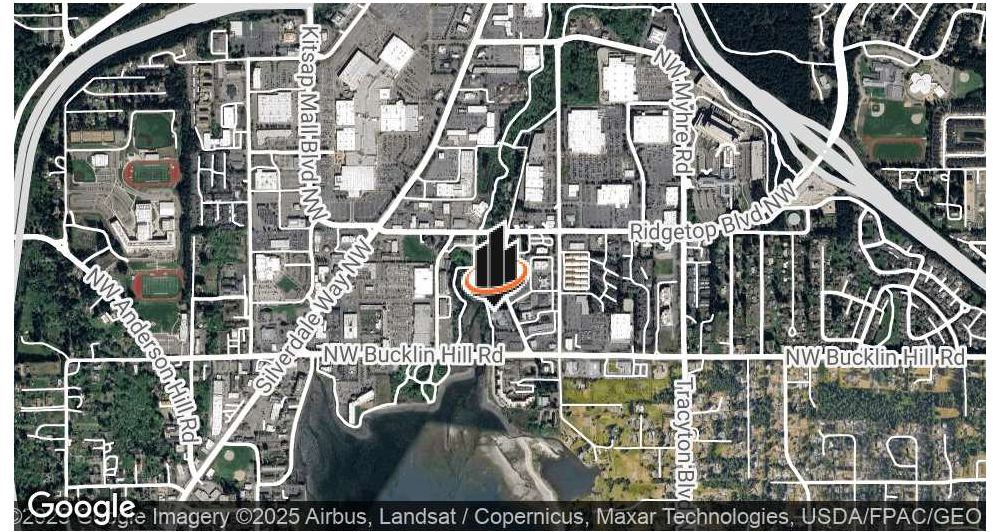
**PRESENTED BY:**

**KEN DAVIS**

O: 509.949.0860

ken.davis@svn.com

## PROPERTY SUMMARY



### OFFERING SUMMARY

|                       |                               |
|-----------------------|-------------------------------|
| <b>LEASE RATE:</b>    | \$19.00 PSF NNN               |
| <b>BUILDING SIZE:</b> | 22,571 SF                     |
| <b>AVAILABLE SF:</b>  | 948                           |
| <b>LOT SIZE:</b>      | 1.18 Acres                    |
| <b>YEAR BUILT:</b>    | 1994                          |
| <b>ZONING:</b>        | Regional Center (10-30 DU/Ac) |
| <b>MARKET:</b>        | Silverdale                    |
| <b>APN:</b>           | 162501-3-096-2007             |

### LOCATION OVERVIEW

The Creekside Office Park is a very located professional center situated in the heart of Silverdale, WA. Ample off street parking, very well maintained grounds, and all services are located in the immediate vicinity. This professional center also boasts additional secured garage parking for tenants.

### PROPERTY HIGHLIGHTS

- 948 SF
- 3 Private Offices
- Reception Area
- Kitchenette
- 1 Secured Garage Parking Space Included
- Excellent Area with all Services in Immediate Vicinity

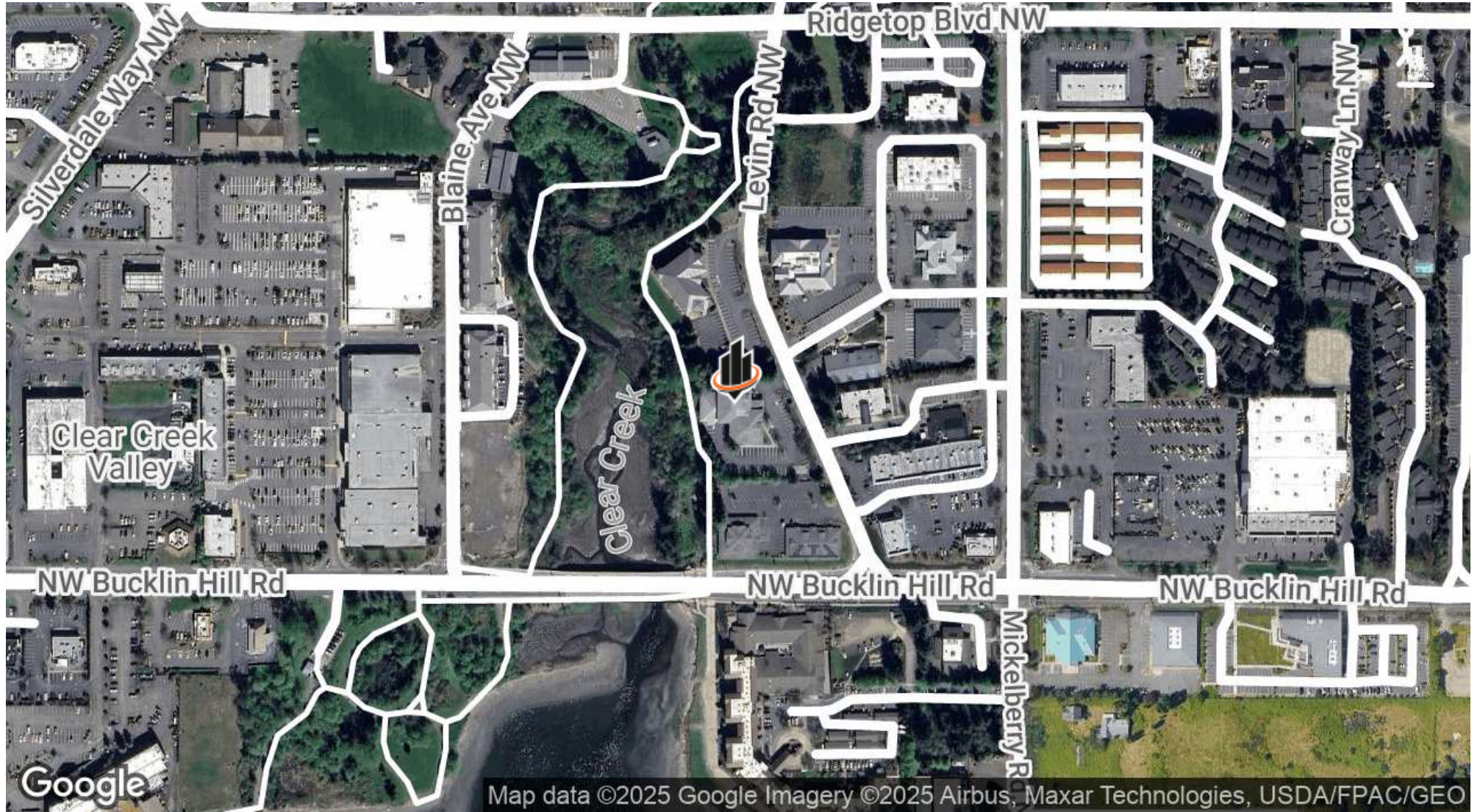
**KEN DAVIS**  
 O: 509.949.0860  
 ken.davis@svn.com

**ADDITIONAL PHOTOS**



**KEN DAVIS**  
O: 509.949.0860  
ken.davis@svn.com

# LOCATION MAP



**KEN DAVIS**  
O: 509.949.0860  
ken.davis@svn.com

# DEMOGRAPHICS MAP & REPORT

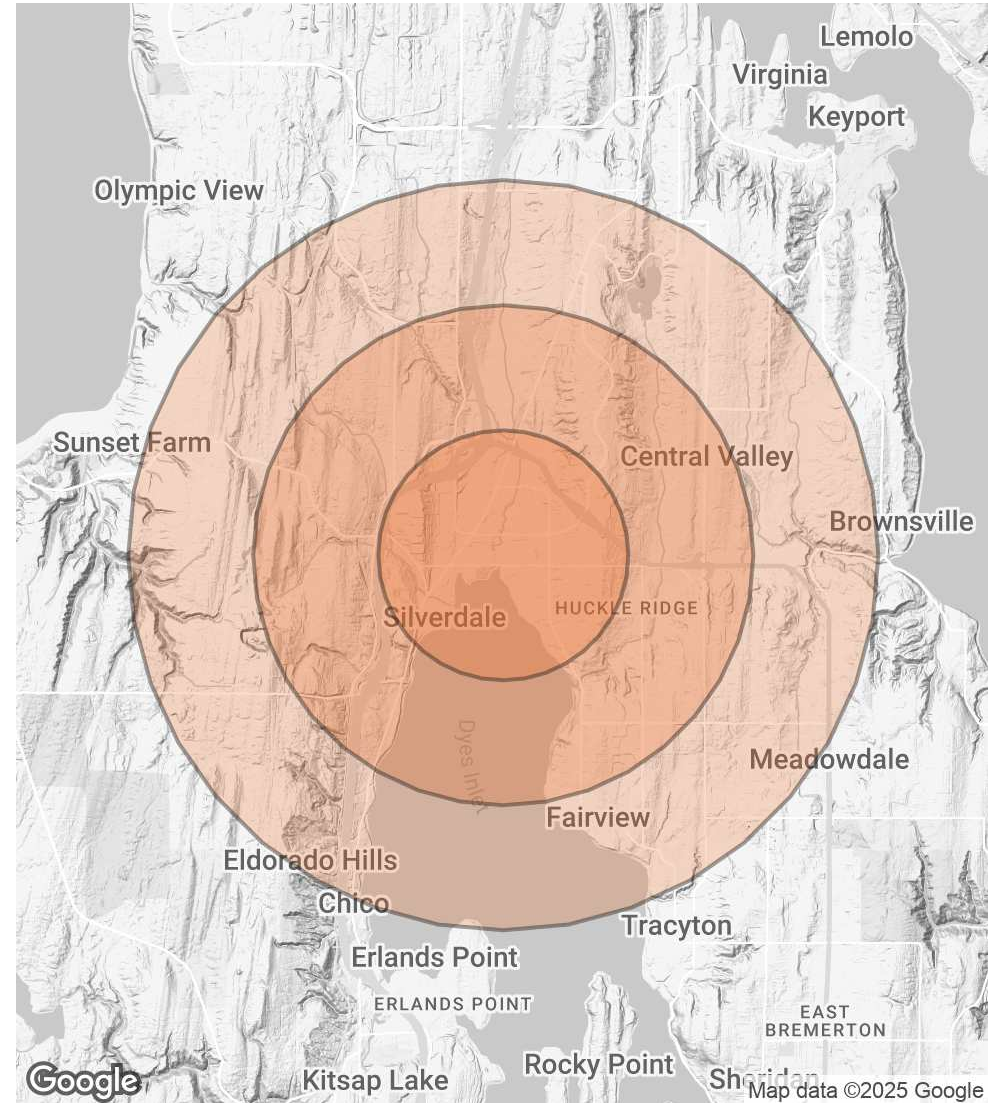
## POPULATION

|                             | 1 MILE | 2 MILES | 3 MILES |
|-----------------------------|--------|---------|---------|
| <b>TOTAL POPULATION</b>     | 5,776  | 21,557  | 39,182  |
| <b>AVERAGE AGE</b>          | 37.7   | 38.1    | 37.8    |
| <b>AVERAGE AGE (MALE)</b>   | 33.8   | 35.6    | 36.1    |
| <b>AVERAGE AGE (FEMALE)</b> | 41.6   | 40.2    | 39.6    |

## HOUSEHOLDS & INCOME

|                            | 1 MILE    | 2 MILES   | 3 MILES   |
|----------------------------|-----------|-----------|-----------|
| <b>TOTAL HOUSEHOLDS</b>    | 2,888     | 8,942     | 15,925    |
| <b># OF PERSONS PER HH</b> | 2.0       | 2.4       | 2.5       |
| <b>AVERAGE HH INCOME</b>   | \$81,347  | \$95,152  | \$95,135  |
| <b>AVERAGE HOUSE VALUE</b> | \$311,336 | \$321,083 | \$324,406 |

\* Demographic data derived from 2020 ACS - US Census



**KEN DAVIS**

O: 509.949.0860

ken.davis@svn.com