

LAND FOR SALE

Land for Sale on 441/Pine/301 & Jacksonville Rd

TBD NW 20th St., Ocala, FL 34470



BEAU BROKER
REAL ESTATE GROUP



PROPERTY DESCRIPTION

Land for Sale on 441 and Jacksonville Rd

PROPERTY HIGHLIGHTS

- - Zoned B5 for versatile industrial use
- - Land already Survey, Topographic Survey, Geo Technical Soil Report, Flat Land, and Substantially Cleard
- - Prime location in Ocala area
- - High visibility for business exposure
- - Proximity to major transportation routes
- - Potential for future expansion
- - Strong investment potential in growing market

OFFERING SUMMARY

Sale Price:	\$999,999
Number of Units:	3
Lot Size:	4.75 Acres

DEMOGRAPHICS	3 MILES	5 MILES	7 MILES
Total Households	17,156	39,309	53,464
Total Population	43,448	95,657	132,112
Average HH Income	\$69,654	\$83,916	\$88,165

Beau Broker

Managing Broker

352.208.9945 x3

Beau@beaubroker.com

Stacy Karst

Senior Associate

352.208.9945 x2

Stacy@beaubroker.com

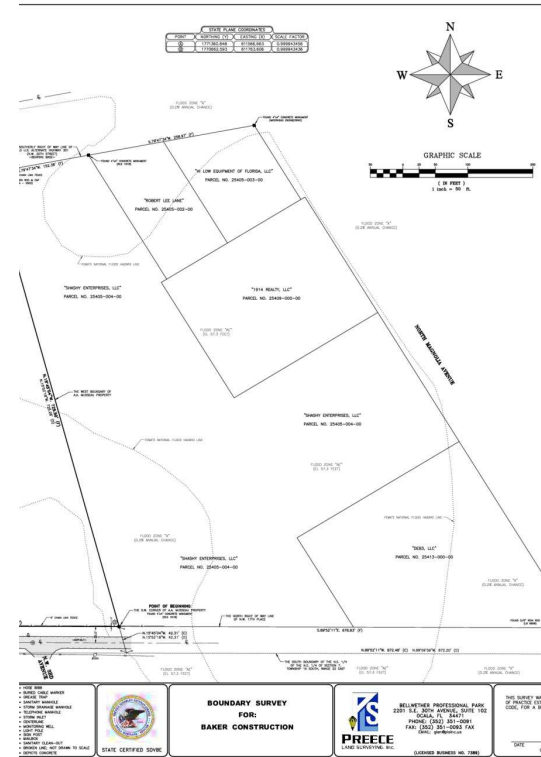
LAND FOR SALE

Land for Sale on 441/Pine/301 & Jacksonville Rd

TBD NW 20th St., Ocala, FL 34470



BEAU BROKER
REAL ESTATE GROUP



Beau Broker
Managing Broker
352.208.9945 x3
Beau@beaubroker.com

Stacy Karst
Senior Associate
352.208.9945 x2
Stacy@beaubroker.com

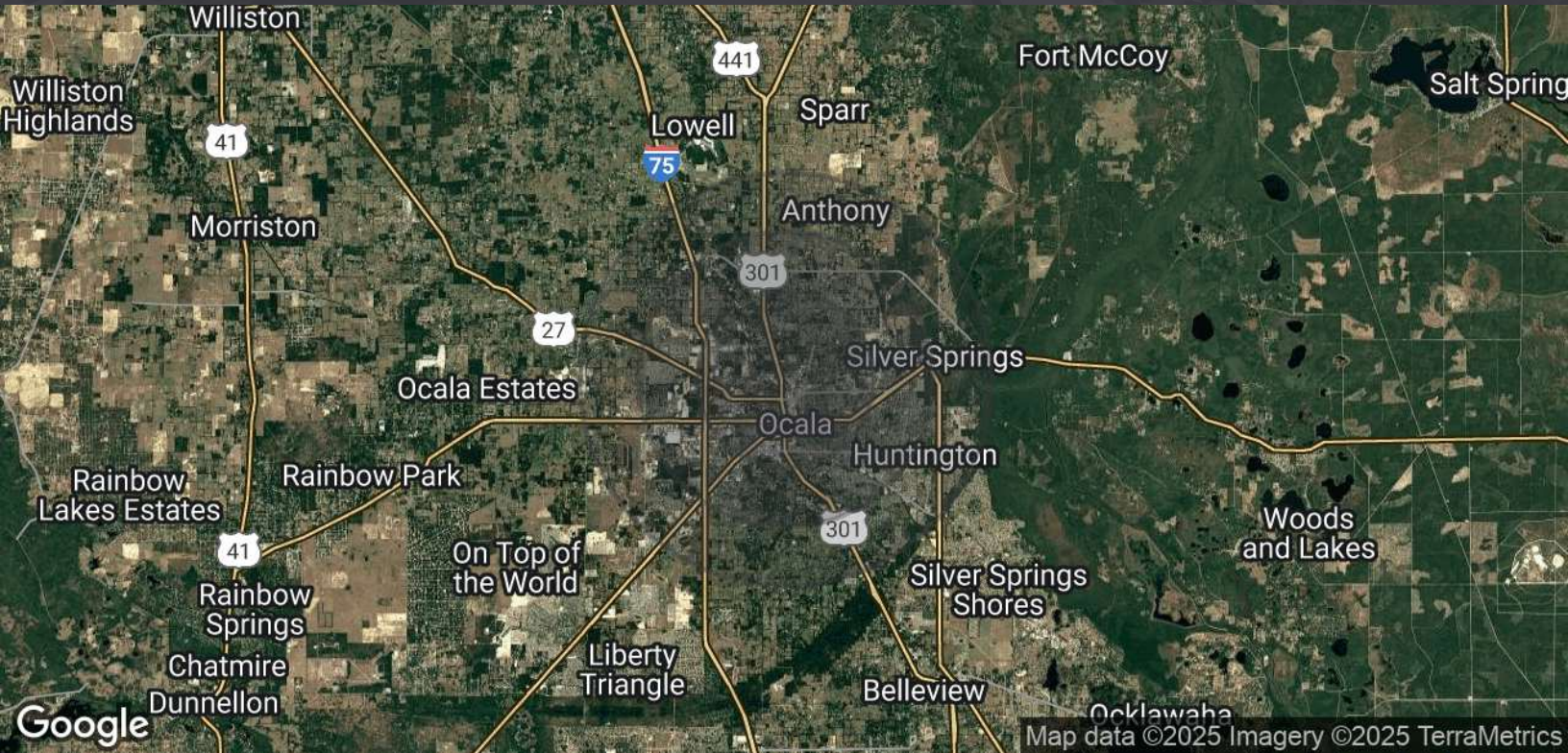
LAND FOR SALE

Land for Sale on 441/Pine/301 & Jacksonville Rd

TBD NW 20th St., Ocala, FL 34470



BEAU BROKER
REAL ESTATE GROUP



POPULATION	3 MILES	5 MILES	7 MILES
Total Population	43,448	95,657	132,112
Average Age	40	43	43
Average Age (Male)	39	42	42
Average Age (Female)	42	45	45
HOUSEHOLDS & INCOME	3 MILES	5 MILES	7 MILES
Total Households	17,156	39,309	53,464
# of Persons per HH	2.5	2.4	2.5
Average HH Income	\$69,654	\$83,916	\$88,165
Average House Value	\$208,671	\$247,462	\$268,105

* Demographic data derived from 2020 ACS - US Census

Beau Broker

Managing Broker

352.208.9945 x3

Beau@beaubroker.com

Stacy Karst

Senior Associate

352.208.9945 x2

Stacy@beaubroker.com