

# THE 300 - BANK OF AMERICA TOWER



300 S Harbor Blvd | Anaheim

Fully Renovated Building  
Office / Medical / Creative  
For Lease



# Creative and General Office Suites Available

## Building Summary

- A 10-story, 121,825 office building
- Standard parking available at a ratio of 4/1,000 sf (potential to expand)
- On-site management and 24/7 security
- Features high speed internet connections over fiber networks
- Numerous walkable amenities including restaurants, banking and hotels; Center Street Promenade / Anaheim Packing House, and much more!
- Easy Access to the 5, 91, and 57 Freeways; Disneyland within minutes.





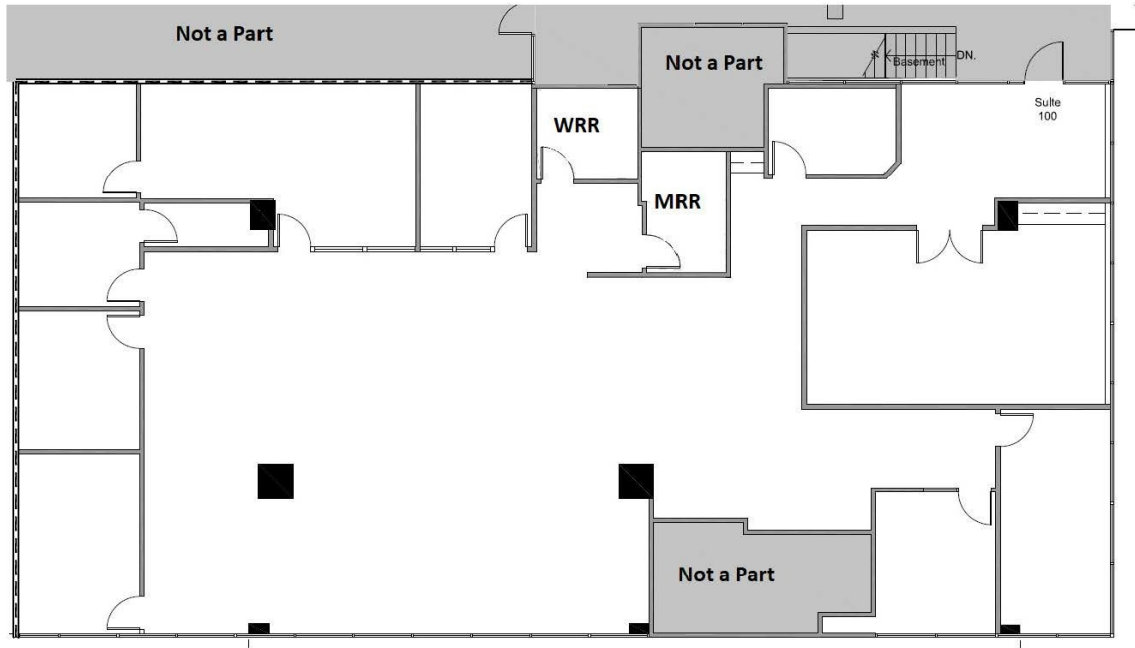
## Property Overview

The 300 - BANK OF AMERICA TOWER of Anaheim is a 10-story 121,825 square foot corporate office building which offers excellent views of the historic downtown Anaheim area, Disneyland, and surrounding cities. With immediate access to the 5, 91, and 57 Freeways, The 300 is surrounded by numerous amenities including Disneyland, Downtown Anaheim, Anaheim Marketplace, and the Anaheim Packing District (Packing House).

The building offers a spectrum of creative office and general office suites and layouts to suit your businesses' needs. Additionally, The 300 can accommodate above standard parking requirements including medical uses.

# THE 300 - BANK OF AMERICA TOWER

## Floor Plan- Suite 100 +/- 5,463 SQFT



Suite 100  
- Ground Floor,  
immediate access to  
Lobby  
- Medical Conversion  
Possible  
- Conference Room,  
Private Offices, In Suite  
Restrooms

## Exclusive Agents

### MARSHAL VOGT

President  
714.564.7117  
mvogt@lee-associates.com  
CalDRE #01519213

### JONMARK FABIANO

Associate  
714.564.7167  
jfabiano@lee-associates.com  
CalDRE #1250488

### JAIMESON HEARNE

Principal  
714.564.7146  
jhearne@lee-associates.com  
CalDRE #01925107

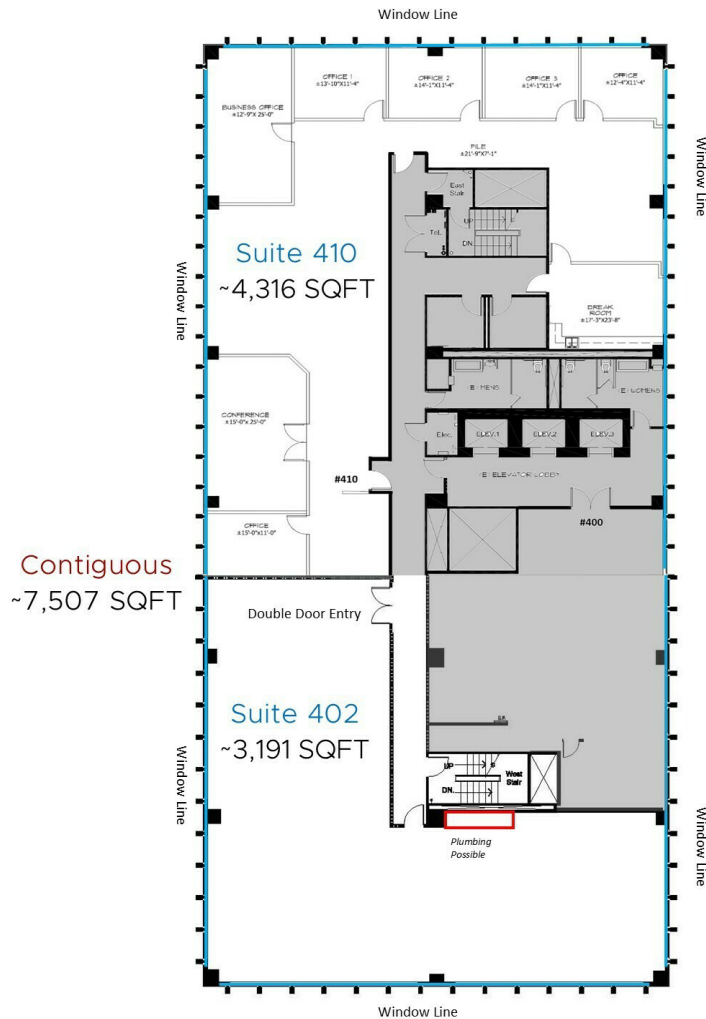


# THE 300 - BANK OF AMERICA TOWER

## Floor Plan - Suite 402/410

+/-3,191 SQFT and +/- 4,316 SQFT

Contiguous to +/-7,507 SQFT



### Suite 410

- 6 Private Offices
- Conference Room
- Open Area
- Break Room

### Suite 402

- Build to Suit Possible
- Large Open Area
- Double Door Entry

## Exclusive Agents

### MARSHAL VOGT

President  
714.564.7117  
mvogt@lee-associates.com  
CalDRE #01519213

### JONMARK FABIANO

Associate  
714.564.7167  
jfabiano@lee-associates.com  
CalDRE #1250488

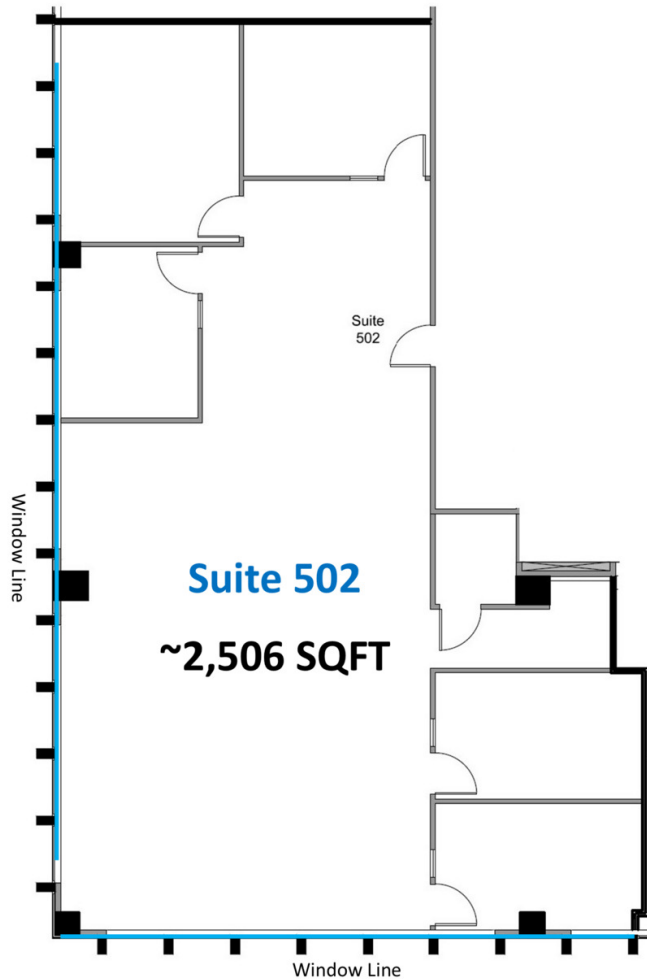
### JAIMESON HEARNE

Principal  
714.564.7146  
jhearne@lee-associates.com  
CalDRE #01925107



# THE 300 - BANK OF AMERICA TOWER

## Floor Plan- Suite 502 +/-2,506 SQFT



## Exclusive Agents

### MARSHAL VOGT

President  
714.564.7117  
mvogt@lee-associates.com  
CalDRE #01519213

### JONMARK FABIANO

Associate  
714.564.7167  
jfabiano@lee-associates.com  
CalDRE #1250488

### JAIMESON HEARNE

Principal  
714.564.7146  
jhearne@lee-associates.com  
CalDRE #01925107

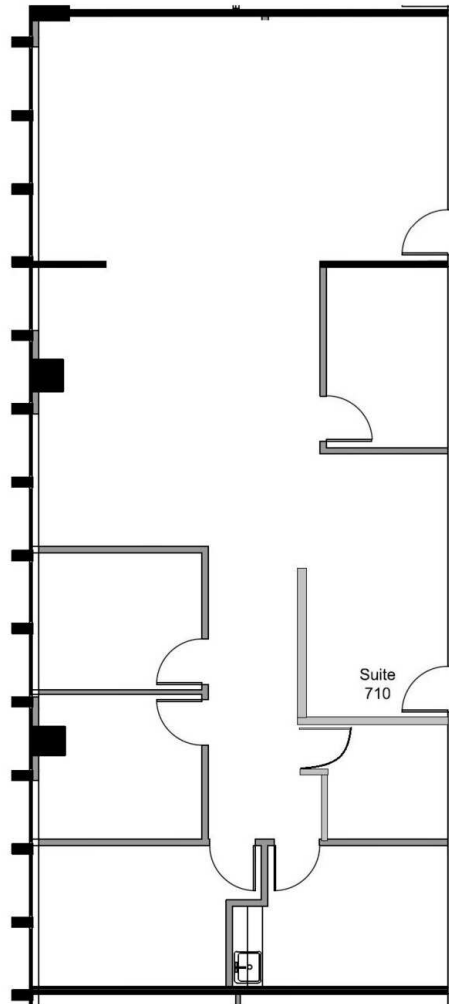




# THE 300 - BANK OF AMERICA TOWER

## Floor Plan - Suite 710

+/- 2,084 SQFT



## Exclusive Agents

### MARSHAL VOGT

President  
714.564.7117  
mvogt@lee-associates.com  
CalDRE #01519213

### JONMARK FABIANO

Associate  
714.564.7167  
jfabiano@lee-associates.com  
CalDRE #1250488

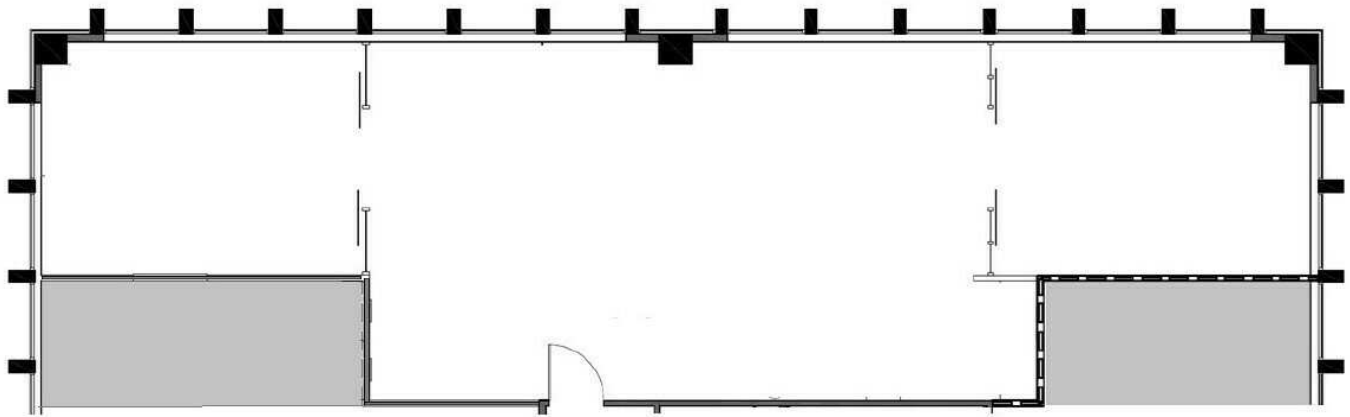
### JAIMESON HEARNE

Principal  
714.564.7146  
jhearne@lee-associates.com  
CalDRE #01925107



# THE 300 - BANK OF AMERICA **TOWER**

## Floor Plan - Suite 716 +/- 1,383 Square Feet



## Exclusive Agents

### MARSHAL VOGT

President  
714.564.7117  
mvogt@lee-associates.com  
CalDRE #01519213

### JONMARK FABIANO

Associate  
714.564.7167  
jfabiano@lee-associates.com  
CalDRE #1250488

### JAIMESON HEARNE

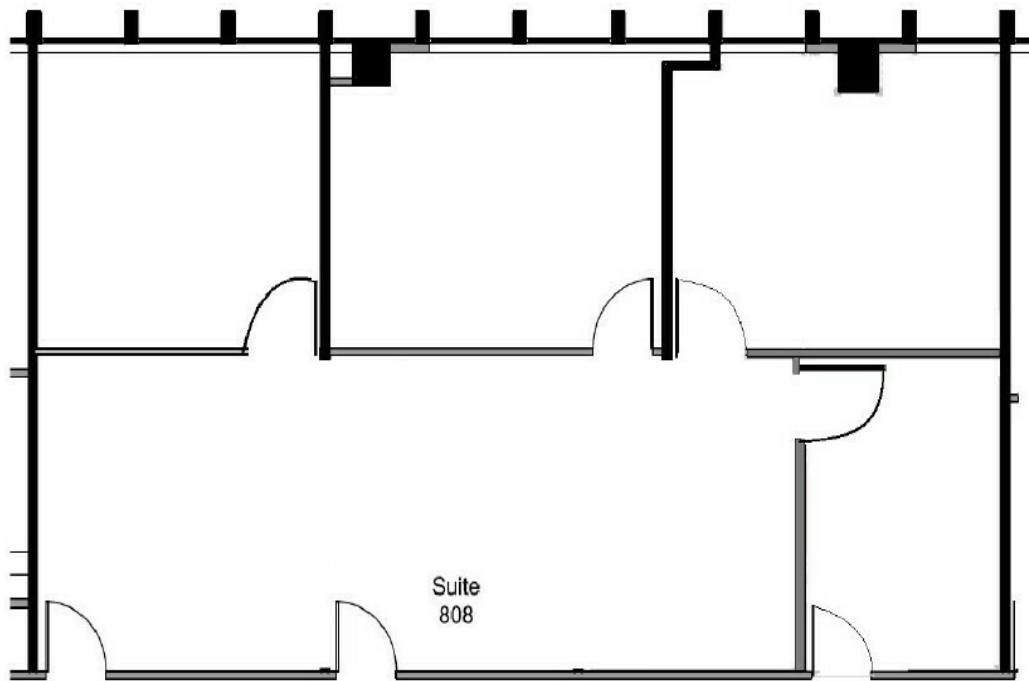
Principal  
714.564.7146  
jhearne@lee-associates.com  
CalDRE #01925107





# THE 300 - BANK OF AMERICA **TOWER**

## Floor Plan - Suite 808 +/-1,530 Square Feet



## Exclusive Agents

### MARSHAL VOGT

President  
714.564.7117  
mvogt@lee-associates.com  
CalDRE #01519213

### JONMARK FABIANO

Associate  
714.564.7167  
jfabiano@lee-associates.com  
CalDRE #1250488

### JAIMESON HEARNE

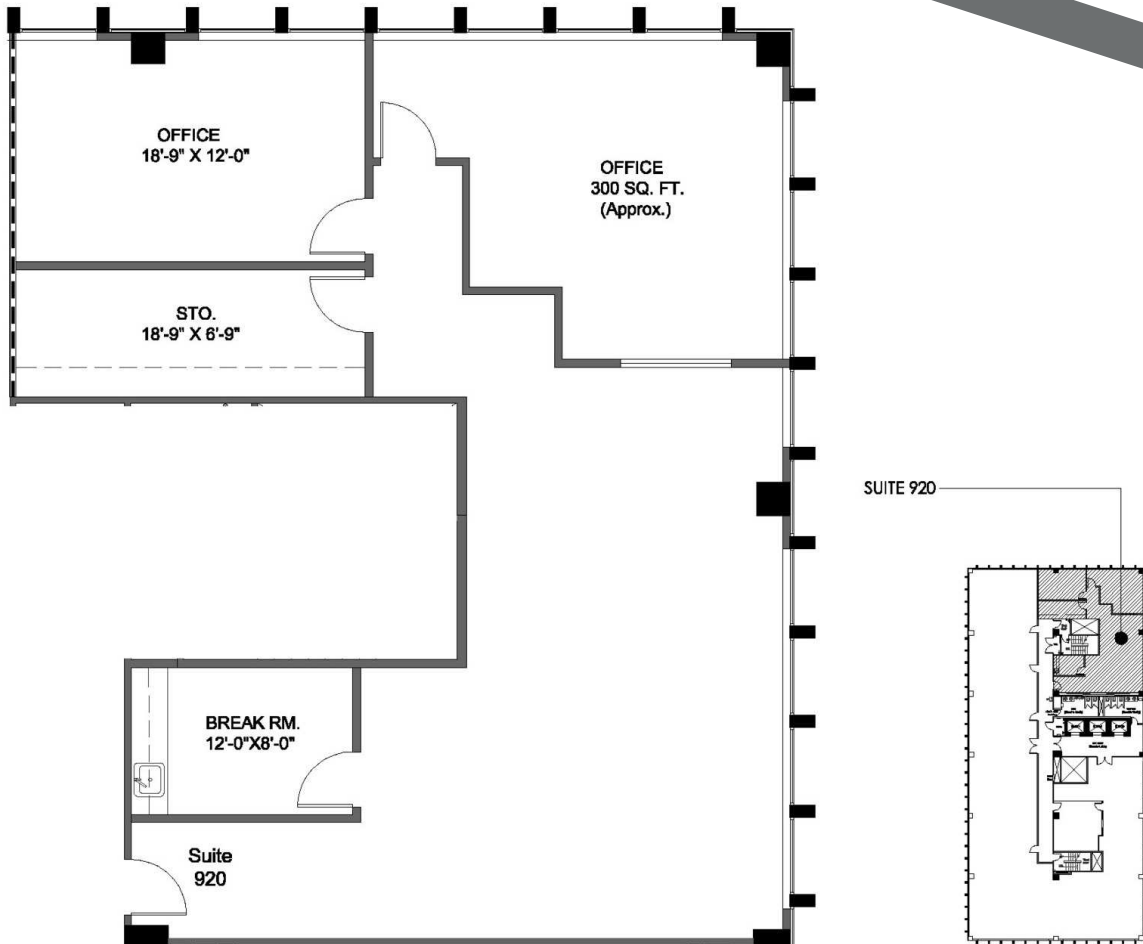
Principal  
714.564.7146  
jhearne@lee-associates.com  
CalDRE #01925107



# THE 300 - BANK OF AMERICA TOWER

## Floor Plan - Suite 920

+/- 1,866 SQFT



## Exclusive Agents

### MARSHAL VOGT

President  
714.564.7117  
mvogt@lee-associates.com  
CalDRE #01519213

### JONMARK FABIANO

Associate  
714.564.7167  
jfabiano@lee-associates.com  
CalDRE #1250488

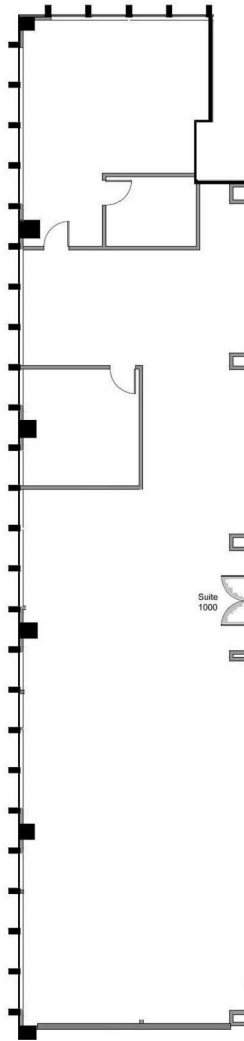
### JAIMESON HEARNE

Principal  
714.564.7146  
jhearne@lee-associates.com  
CalDRE #01925107



# THE 300 - BANK OF AMERICA TOWER

**Floor Plan- Suite 1000**  
+/- 4,490 SQFT



## Exclusive Agents

**MARSHAL VOGT**

President  
714.564.7117  
mvogt@lee-associates.com  
CalDRE #01519213

**JONMARK FABIANO**

Associate  
714.564.7167  
jfabiano@lee-associates.com  
CalDRE #1250488

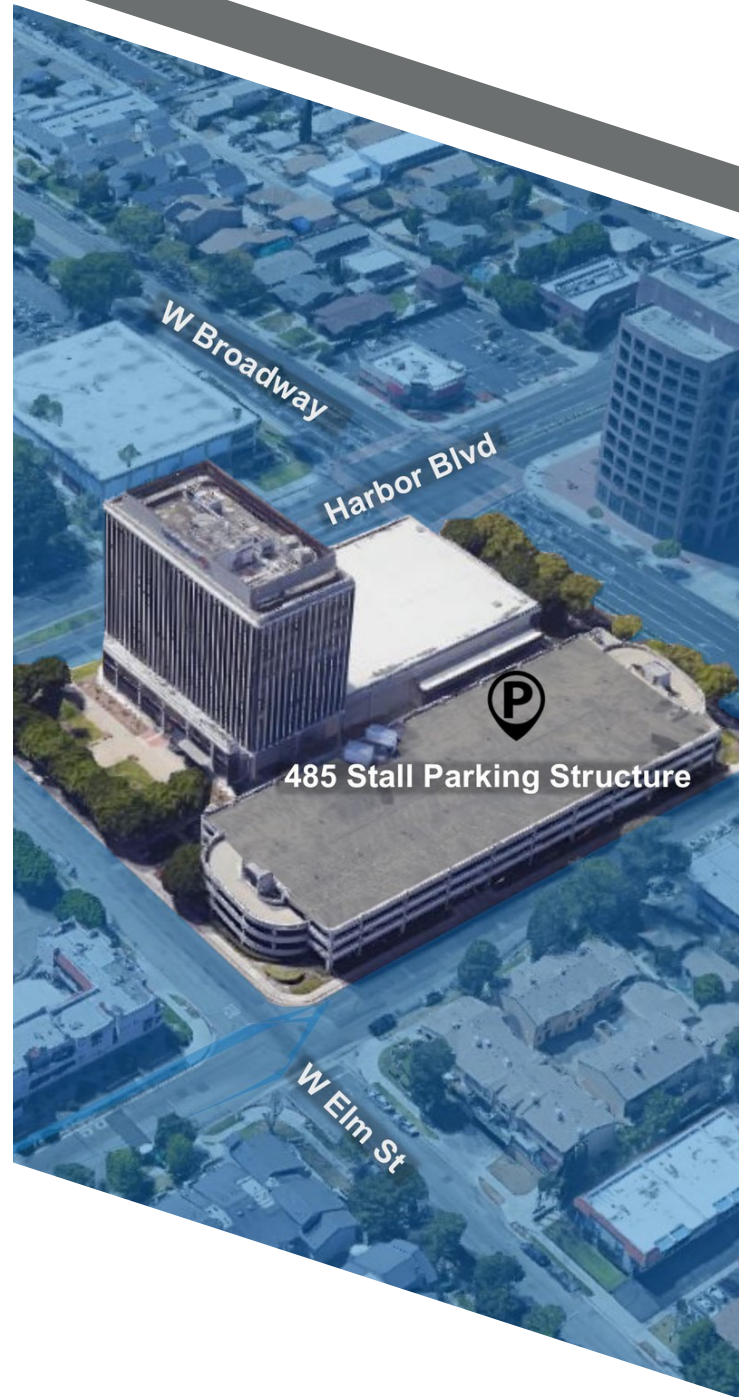
**JAIMESON HEARNE**

Principal  
714.564.7146  
jhearne@lee-associates.com  
CalDRE #01925107





# THE 300 - BANK OF AMERICA TOWER



## Exclusive Agents

### MARSHAL VOGT

President  
714.564.7117  
mvogt@lee-associates.com  
CalDRE #01519213

### JONMARK FABIANO

Associate  
714.564.7167  
jfabiano@lee-associates.com  
CalDRE #1250488

### JAIMESON HEARNE

Principal  
714.564.7146  
jhearne@lee-associates.com  
CalDRE #01925107

