



Maintenance Shop & Yard Space

McDonough I GA

+/- 12.5 acres Available for Lease

Contact:

Stephen Bridges, SIOR
OnPace Partners
+1 404 909 1560
Stephen@onpacepartners.com

Nat Weikert
OnPace Partners
+1 678 575 4607
Nat.weikert@onpacepartners.com

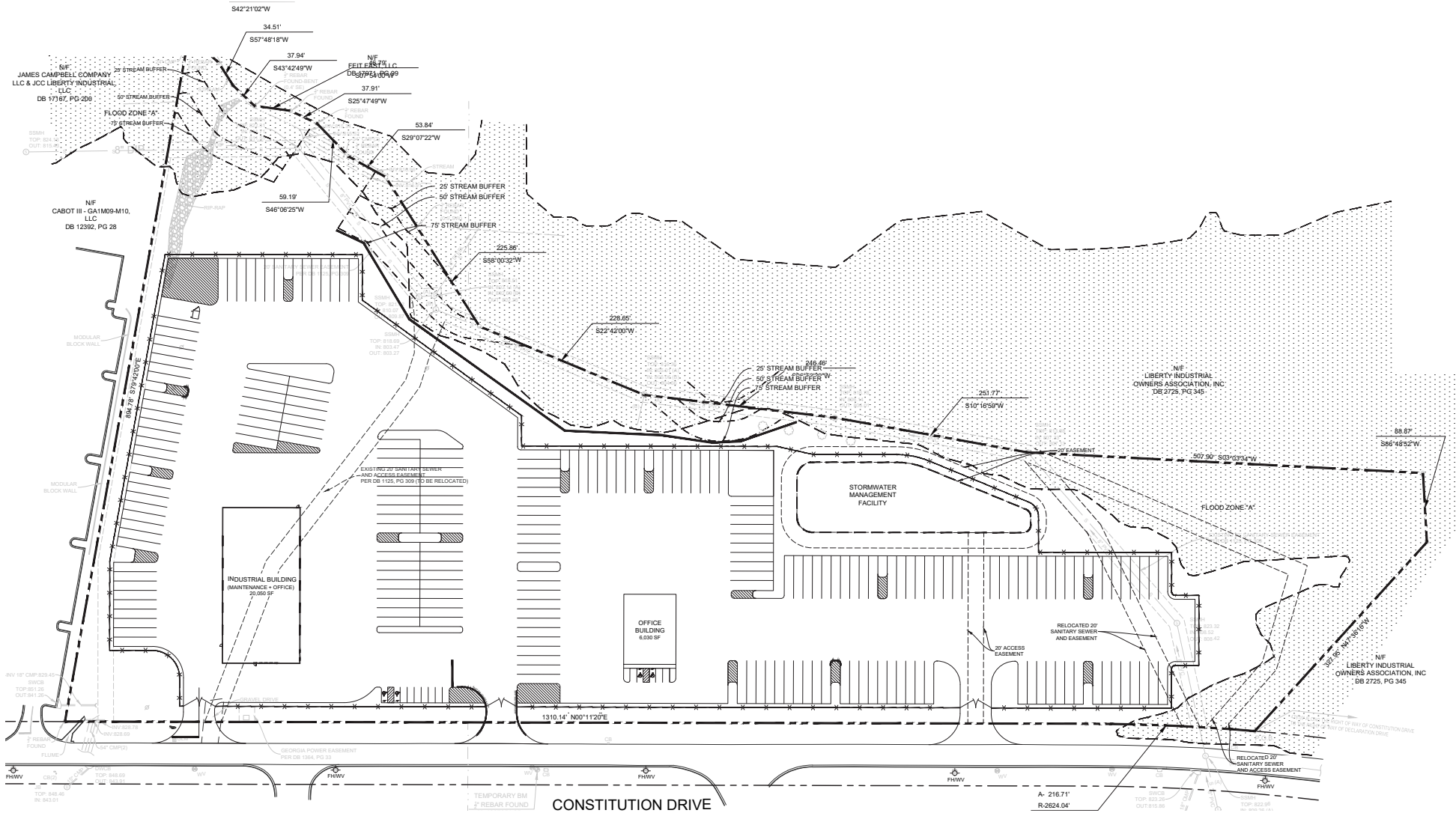


McDonough
Available For Lease



| | |
|------------|---|
| Acreeage: | 12.5 Acres |
| Surface: | Mostly Paved, Partly graveled |
| Buildings: | Building 1: 20,050sf maintenance shop and office area +/- 7 acres Building 2: 6,030sf maintenance building +/- 5.5 acres |
| Access: | Two points of ingress / egress |
| Security: | Fenced, gated, and lit all the way around |
| Delivery: | September 2024 |

Site Plan



Contact:

Stephen Bridges, SIOR
 OnPace Partners
 +1 404 909 1560
 Stephen@onpacepartners.com

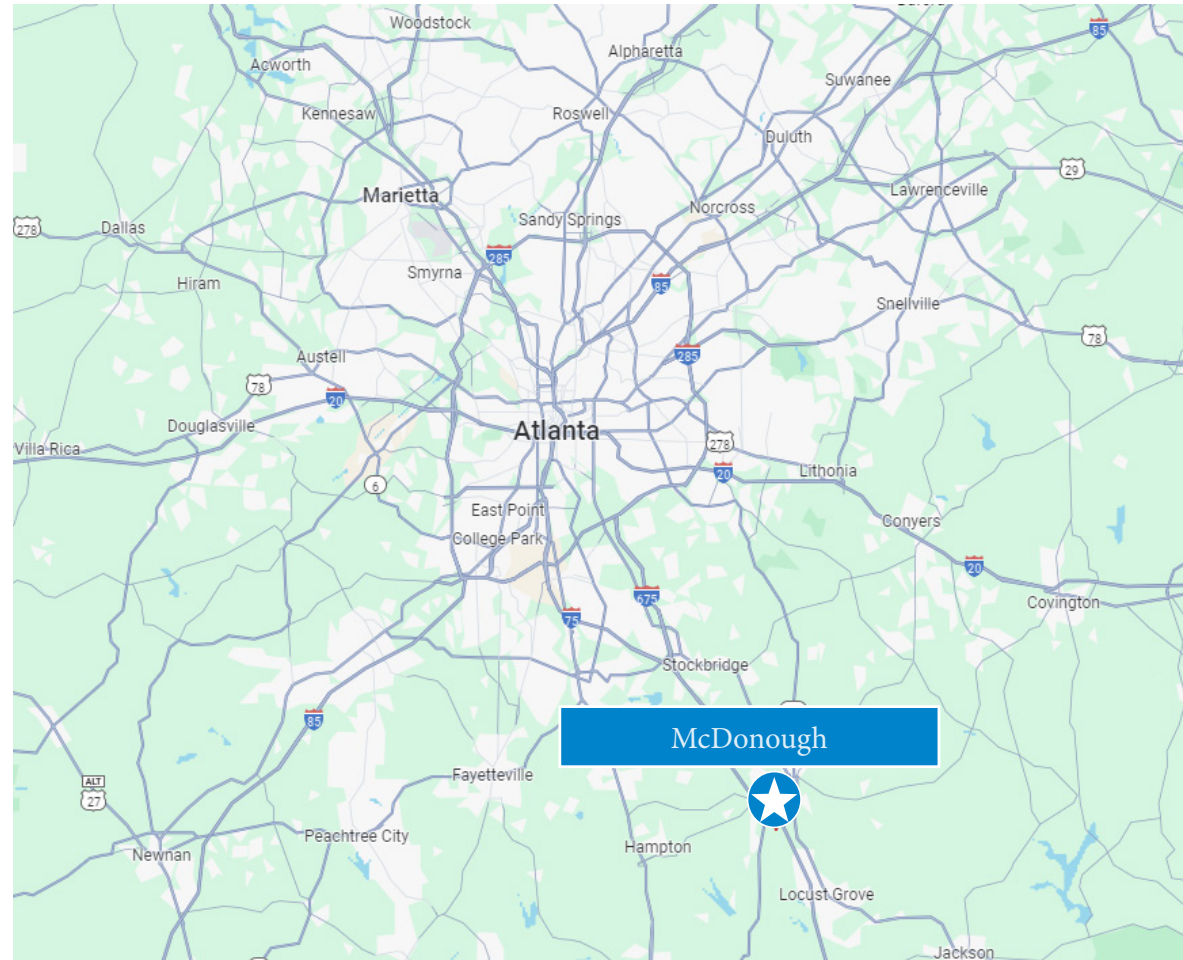
Nat Weikert
 OnPace Partners
 +1 678 575 4607
 Nat.weikert@onpacepartners.com



McDonough
Available For Lease

DRIVE TIMES

| Point of Interest | Miles |
|-------------------|-------|
| I-75 | .9 |
| I-285 | 22.8 |
| ATL Airport | 24.3 |
| Downtown ATL | 31.5 |
| Port of Savannah | 221 |



Contact:

Stephen Bridges, SIOR
OnPace Partners
+1 404 909 1560
Stephen@onpacepartners.com

Nat Weikert
OnPace Partners
+1 678 575 4607
Nat.weikert@onpacepartners.com

