



WOLFE LAKE PROFESSIONAL CENTER

5000 W 36th Street ✦ St. Louis Park, MN 55416



- ✦ Convenient access to major roadways; 100, 7, Excelsior Blvd.
- ✦ Easy access to countless retail, hotel, restaurant and service amenities
- ✦ Excellent and central location
- ✦ Immediate access to Greenway bike trail and Bass Lake walking trail
- ✦ Adjacent to St. Louis Park Rec Center
- ✦ Nearby the Minikahda Club, Uptown, Bde Maka Ska, Excelsior & Grand

FOR LEASE

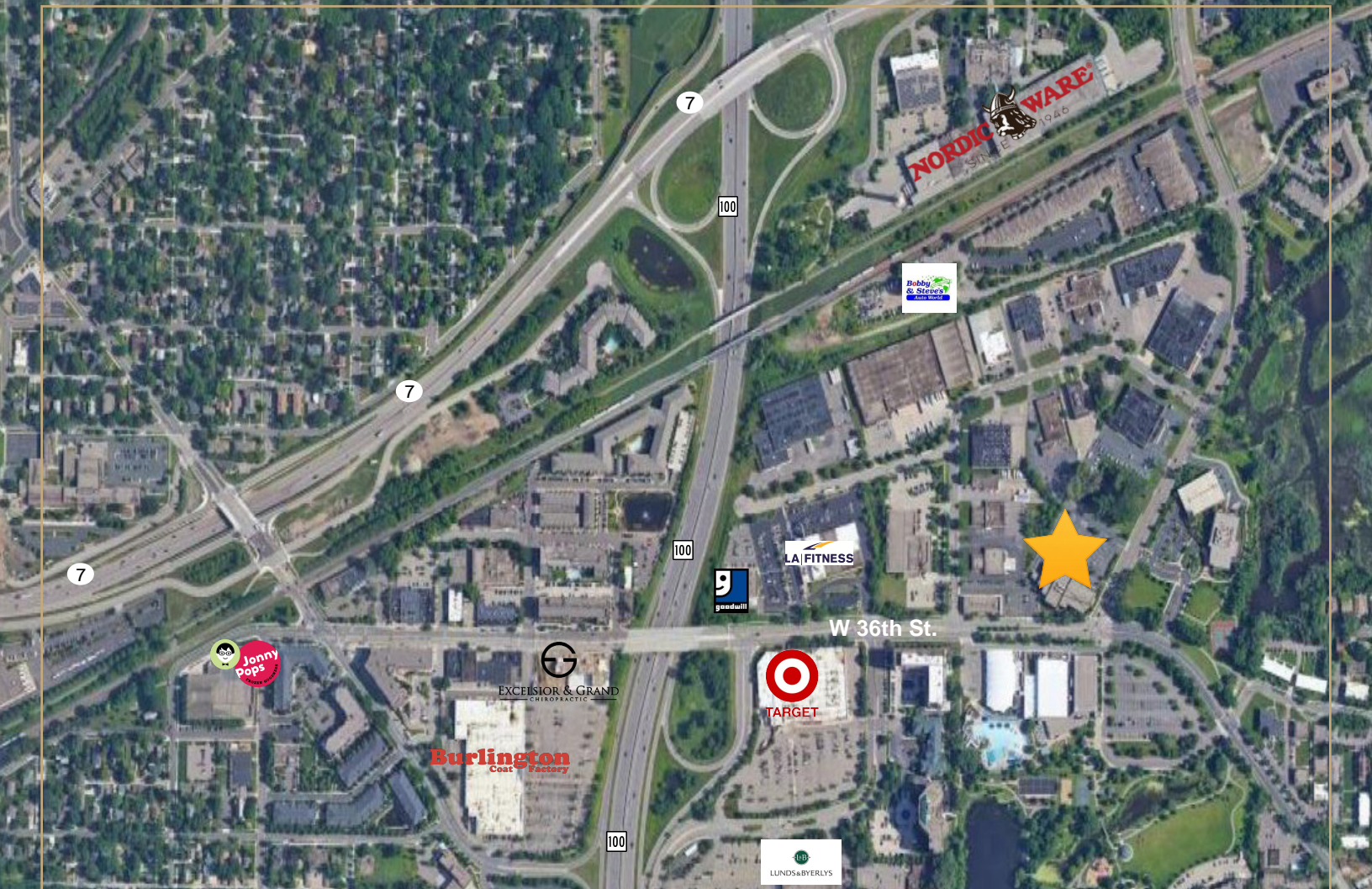
JASON A. BUTTERFIELD

(952) 460-9830

jason.butterfield@frauenshuh.com



FRAUENSHUH
COMMERCIAL REAL ESTATE



WOLFE LAKE PROFESSIONAL CENTER

5000 W 36th Street ♦ St. Louis Park, MN 55416

♦ BUILDING DETAILS

- Building Size/Stories:
Approx. 52,423 SF/2 Stories
- Year Built: 2005
- Net Rental Rate: \$22.00 RSF
- 2025 Estimated Ops/Tax: \$16.02
- Available Space:
Suite 230 2,688*
*Available 11/1/25

♦ AMENITIES

- Surface parking available
- Nearby the Minikahda Club, Uptown and Bde Maka Ska
- Minutes from numerous hotels & many restaurants & retailers

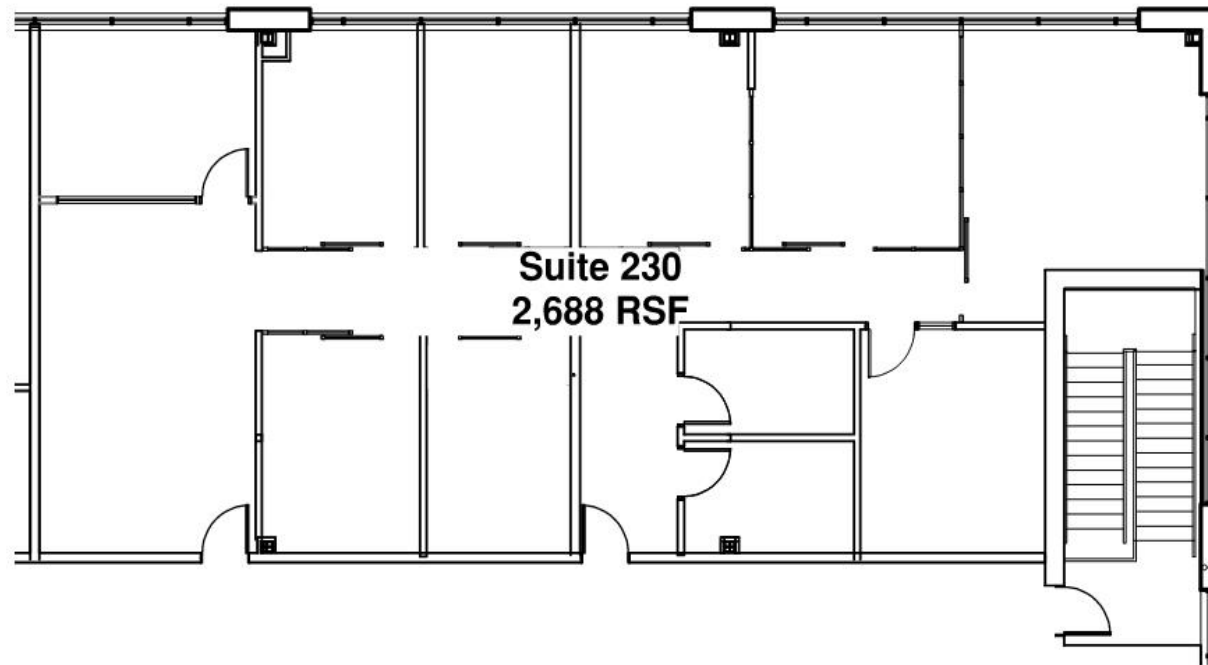
F R A U E N S H U H

COMMERCIAL REAL ESTATE

www.frauenshuh.com ♦ 7101 W. 78th Street ♦ Minneapolis, MN

WOLFE LAKE PROFESSIONAL CENTER ♦ FOR LEASE ♦ SUITE 230

5000 W 36th Street ♦ St. Louis Park, MN



JASON A. BUTTERFIELD
(952) 460-9830
jason.butterfield@frauenshuh.com

ESTD  1983
FRAUENSHUH
COMMERCIAL REAL ESTATE