

2 & 3 - Office Executive Suites FOR LEASE!

Sagebrush Office Park - Flower Mound, TX



LOCATION: 2605 Sagebrush Drive, Flower Mound, TX; located on SEQ of Long Prairie Rd. (FM 2499) and Sagebrush Dr. (Lighted Intersection).

EXPENSES: **Utilities, taxes and maintenance paid by Landlord!!** Tenant only pays for telephone and Internet (plus janitorial for their Suite).

<u>2605</u>	Suite 102 -	648 SF	\$1,400.00/month – 2 offices (1 corner)
	Suite 103 -	691 SF	\$1,440.00/month – 2 offices (1 corner with a creek view)
	Suite 201 -	826 SF	\$1,720.00/month – 3 offices
	Suite 210 -	893 SF	\$1,786.00/month – 3 offices (1 corner)

For further information contact: Rich Muller



Vintage Realty

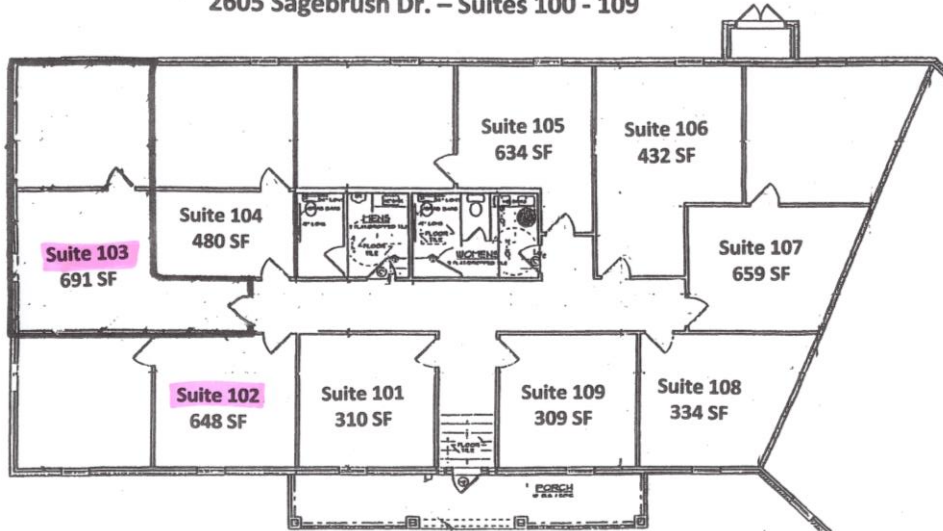
2980 Long Prairie Rd., Suite D

Flower Mound, TX 75022

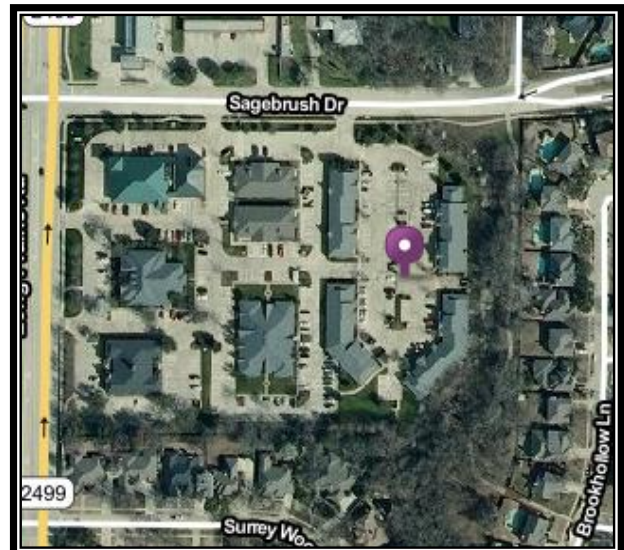
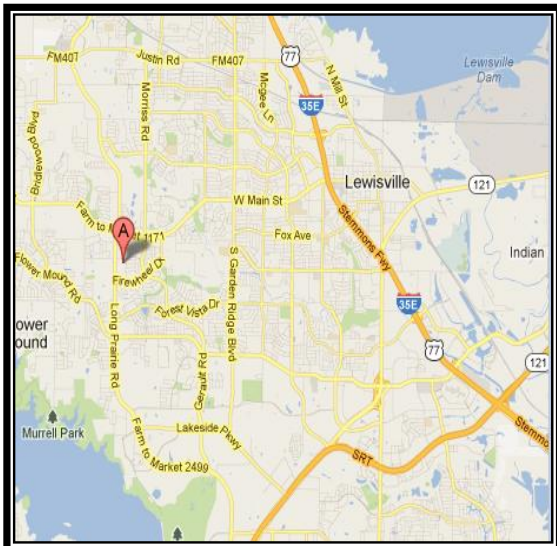
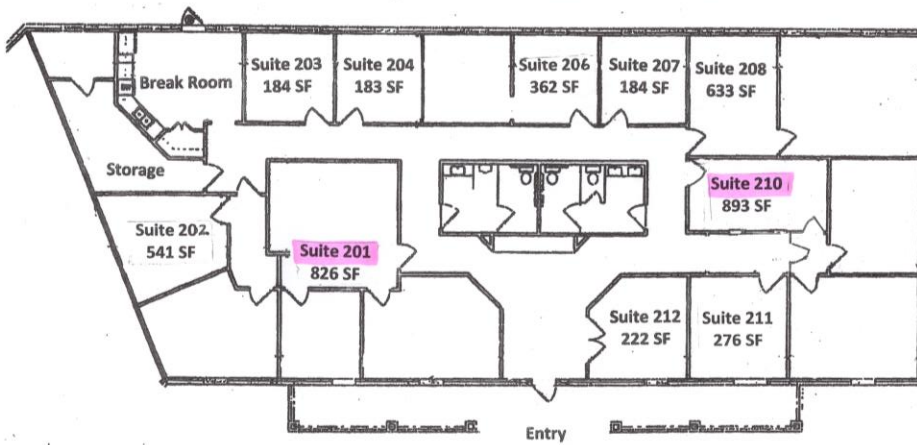
972/355-0669 or Fax 972/355-5477

Email: Rich@VintageRealty.net Web Site: www.VintageRealty.net

2605 Sagebrush Dr. – Suites 100 - 109



2605 Sagebrush Dr. – Suites 200 - 212



This information is believed to be accurate, but no representation or warranty, express or implied, as to its accuracy or completeness is made by any party. The presentation of this property is submitted subject to errors, omissions, change of price or prior sale or lease, or withdrawal without notice.