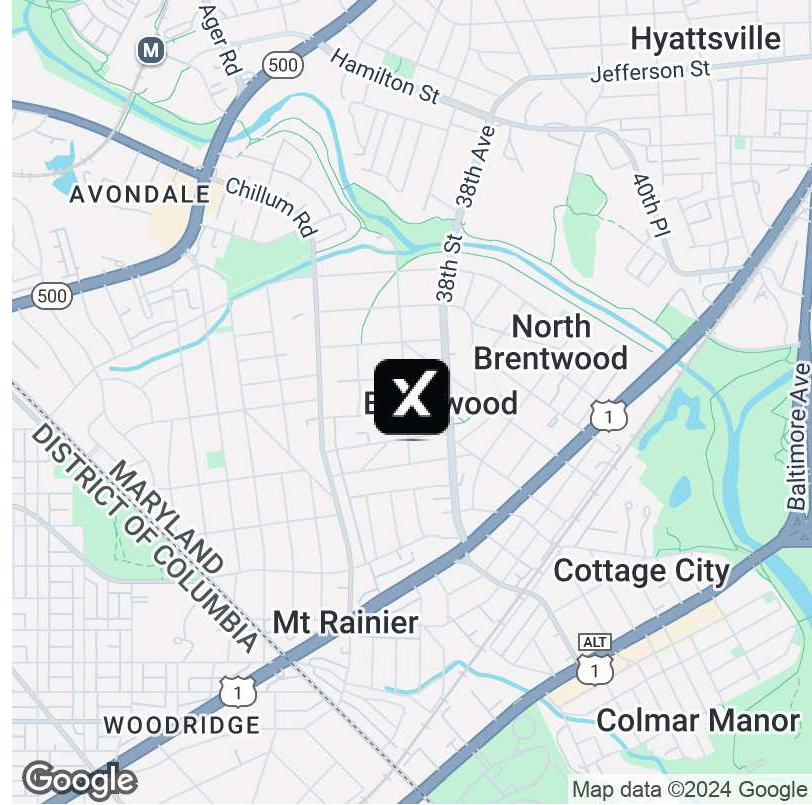


FOR SALE | Neighborhood Church for Sale



OFFERING SUMMARY

Sale Price:	Subject To Offer
Building Size:	3,600 SF
Available SF:	
Lot Size:	8,820 SF
Number of Units:	1
Price / SF:	-
Year Built:	1901
Zoning:	RSF65
Market:	Washington, DC MSA
Submarket:	Northern Prince George's County

PROPERTY OVERVIEW

4205 37th St, Brentwood, MD: Prime Opportunity for a Growing Ministry

eXp Commercial is excited to present this exceptional property, a thriving neighborhood church located in the heart of Brentwood, MD. Boasting a large parking lot, a spacious main sanctuary, and a welcoming fellowship hall, this property offers an ideal setting for a growing ministry seeking a permanent home.

Key Features:

- Expansive Sanctuary:** Accommodate large congregations and special events with ease.
 - Versatile Fellowship Hall:** Perfect for gatherings, classes, and community events.
 - Dedicated Office Space:** Provide a professional and comfortable environment for church leaders and staff.
 - Ample Parking:** Ensure convenient access for parishioners and visitors.
 - Prime Brentwood Location:** Benefit from a strong local community and convenient access to nearby amenities.
- Don't miss this opportunity to secure a property that combines spaciousness, functionality, and a prime location. Contact eXp Commercial today to schedule a tour and learn more about how this property can elevate your ministry.

PROPERTY HIGHLIGHTS

- 1,800 SF building with potential for conversion or expansion

Jonathan Jefferson

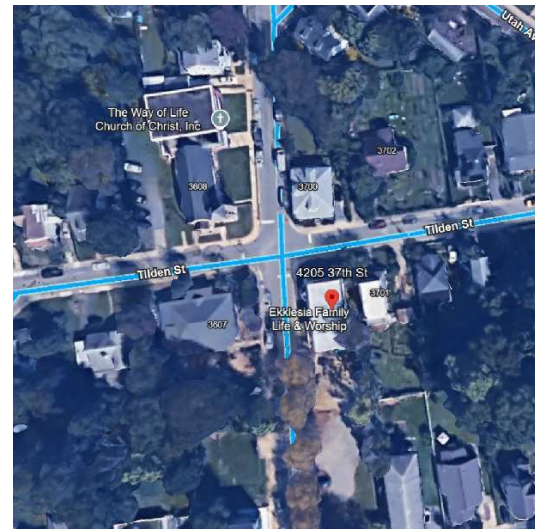
202.527.4674

jonathan.jefferson@expcommercial.com

exp[®]
COMMERCIAL

eXp Commercial, LLC, its direct and indirect parents and their subsidiaries (together, "We") obtained the information above from sources believed to be reliable, however, We have not verified its accuracy and make no guarantee, warranty or representation, expressed or implied, about such information. The information contained above is submitted subject to the possibility of errors, omissions, price changes, rental or other conditions, prior sale, lease or financing, or withdrawal without notice. Any projections, opinions, assumptions or estimates of the information contained above or provided in connection therewith, either expressed or implied, are for example only, and they may not represent current or future performance of the subject property. You, together with your tax and legal advisors, should conduct your own thorough investigation of the subject property and potential investment.

FOR SALE | Neighborhood Church for Sale

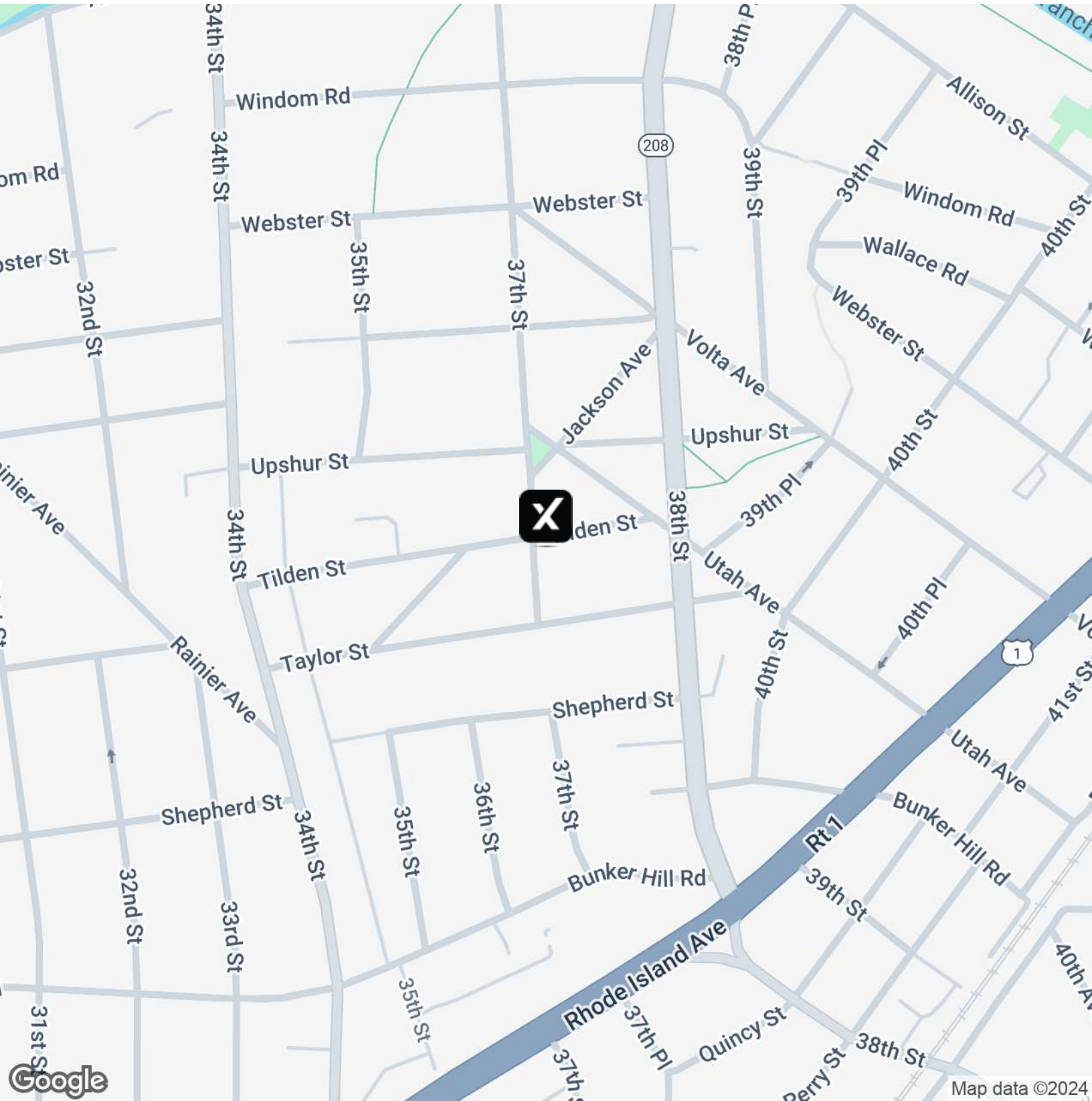


Jonathan Jefferson
202.527.4674
jonathan.jefferson@expcommercial.com



eXp Commercial, LLC, its direct and indirect parents and their subsidiaries (together, "We") obtained the information above from sources believed to be reliable, however, We have not verified its accuracy and make no guarantee, warranty or representation, expressed or implied, about such information. The information contained above is submitted subject to the possibility of errors, omissions, price changes, rental or other conditions, prior sale, lease or financing, or withdrawal without notice. Any projections, opinions, assumptions or estimates of the information contained above or provided in connection therewith, either expressed or implied, are for example only, and they may not represent current or future performance of the subject property. You, together with your tax and legal advisors, should conduct your own thorough investigation of the subject property and potential investment.

FOR SALE | Neighborhood Church for Sale



Jonathan Jefferson

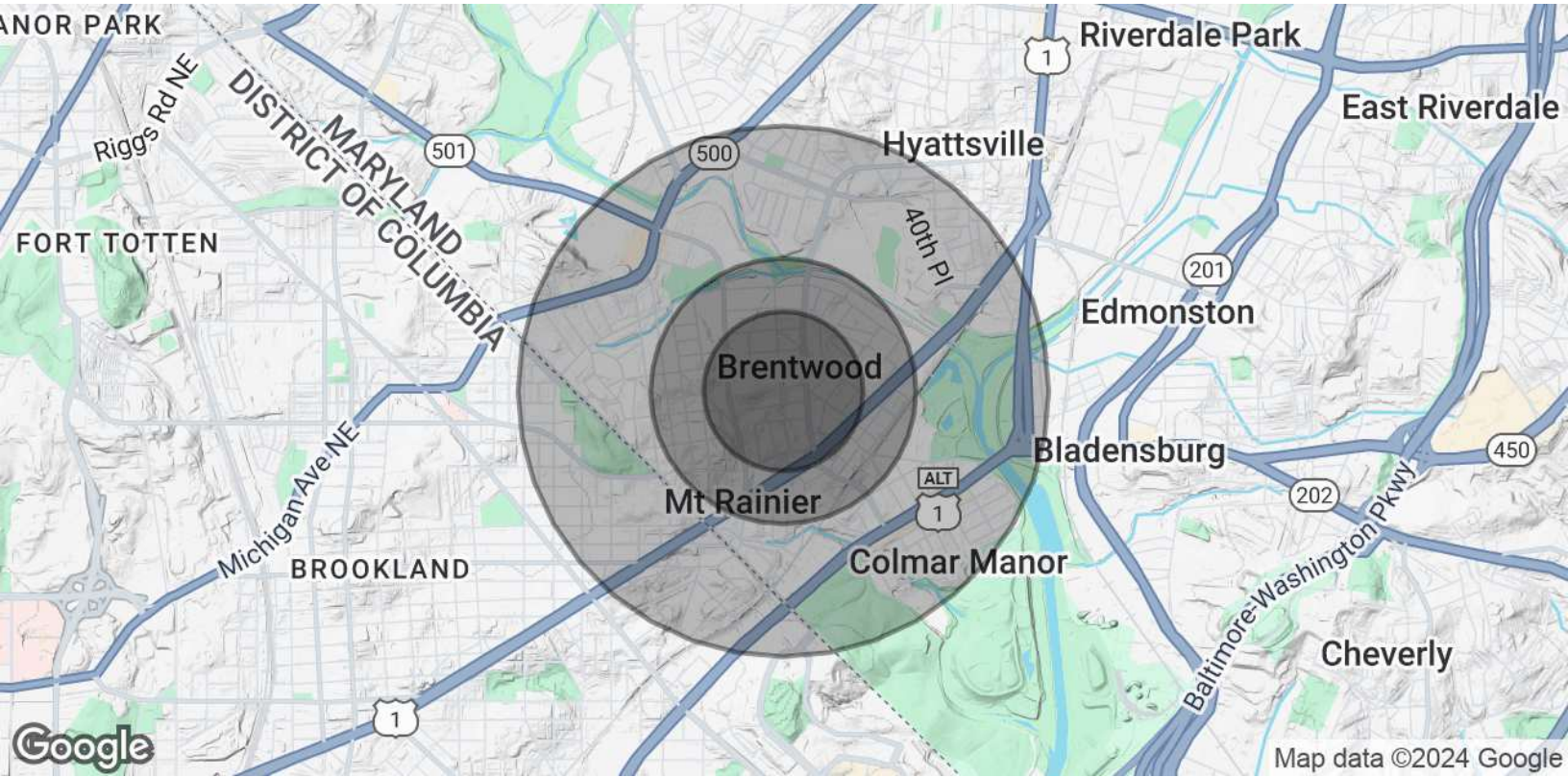
202.527.4674

jonathan.jefferson@expcommercial.com



eXp Commercial, LLC, its direct and indirect parents and their subsidiaries (together, "We") obtained the information above from sources believed to be reliable, however, We have not verified its accuracy and make no guarantee, warranty or representation, expressed or implied, about such information. The information contained above is submitted subject to the possibility of errors, omissions, price changes, rental or other conditions, prior sale, lease or financing, or withdrawal without notice. Any projections, opinions, assumptions or estimates of the information contained above or provided in connection therewith, either expressed or implied, are for example only, and they may not represent current or future performance of the subject property. You, together with your tax and legal advisors, should conduct your own thorough investigation of the subject property and potential investment.

FOR SALE | Neighborhood Church for Sale



POPULATION	0.3 MILES	0.5 MILES	1 MILE
Total Population	2,662	6,324	22,821
Average Age	39	39	39
Average Age (Male)	39	38	38
Average Age (Female)	39	39	39
HOUSEHOLDS & INCOME	0.3 MILES	0.5 MILES	1 MILE
Total Households	887	2,205	8,582
# of Persons per HH	3	2.9	2.7
Average HH Income	\$106,341	\$105,455	\$98,048
Average House Value	\$505,631	\$516,215	\$499,870

Demographics data derived from AlphaMap

Jonathan Jefferson
 202.527.4674
 jonathan.jefferson@expcommercial.com



eXp Commercial, LLC, its direct and indirect parents and their subsidiaries (together, "We") obtained the information above from sources believed to be reliable, however, We have not verified its accuracy and make no guarantee, warranty or representation, expressed or implied, about such information. The information contained above is submitted subject to the possibility of errors, omissions, price changes, rental or other conditions, prior sale, lease or financing, or withdrawal without notice. Any projections, opinions, assumptions or estimates of the information contained above or provided in connection therewith, either expressed or implied, are for example only, and they may not represent current or future performance of the subject property. You, together with your tax and legal advisors, should conduct your own thorough investigation of the subject property and potential investment.