

FOR LEASE
8160 BAYMEADOWS WAY WEST
THE PARKWOOD BUILDING
+/- 51,864 S/F



- Class "A" office space at Class "B" pricing in prestigious Deerwood Center
- 750-14,686 sq. ft. contiguous
- Take immediate occupancy • Functional floor plans
- Turnkey build-outs by Landlord
- On-site property management
- Signage • Limited covered parking
- Traffic signalization
- \$16.75 p.s.f. Full Service

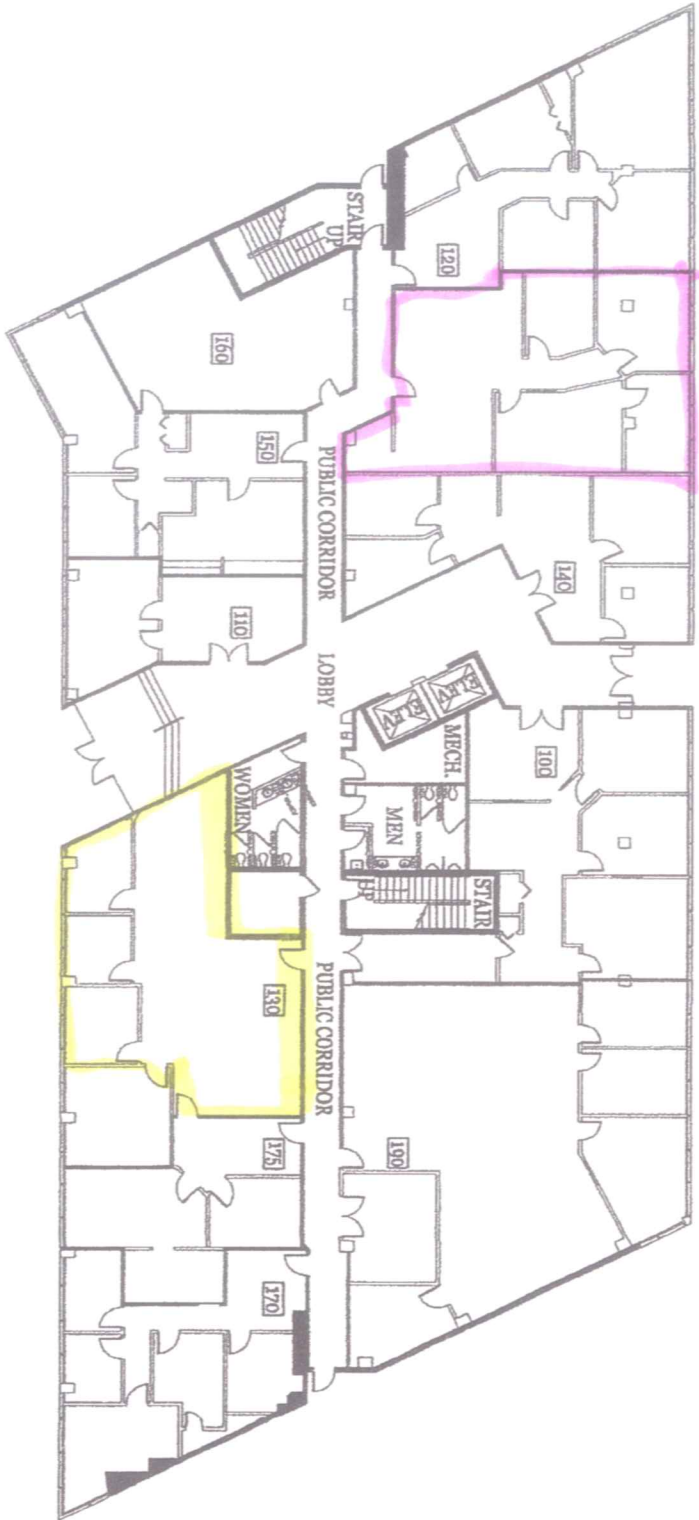
OFFICE
INDUSTRIAL
RETAIL
INVESTMENT
DEVELOPMENT
PROPERTY
MANAGEMENT

For more Information
or Appointment
Contact:

Duke Addison x 212
Steve Orman x 227
Amanda Kinkade x 213



8411 Baymeadows Way, Ste 3
Jacksonville, FL 32256
Office 904-354-1789
Fax 904-354-2445
www.acrei.com



SUITE #	U.S.F.	R.S.F.	SUITE #	U.S.F.	R.S.F.	SUITE #	U.S.F.	R.S.F.	SUITE #	U.S.F.	R.S.F.	SUITE #	U.S.F.	R.S.F.
100	1,589	1,796	130	1,412	1,623	160	663	762	190	2,098	2,303			
110	500	565	140	965 957	954 1081	170	914	1,033						
120	1,194	1,350	150	909	1,045	175	660	746						

E.D.H. REALTY & MANAGEMENT CO.
 PHONE - 904-387-1925
 FAX - 904-387-1958

FIRST FLOOR PLAN FOR:
PARKWOOD BUILDING
 8160 BAYMEADOWS WAY WEST
 JACKSONVILLE, FLORIDA

SCALE: NOT TO SCALE
 GROSS SQ. FT.
 15,745
 DATE: 5/13/08

SHEET:
 1
 OF 3