



CLARION PARTNERS

# For Lease

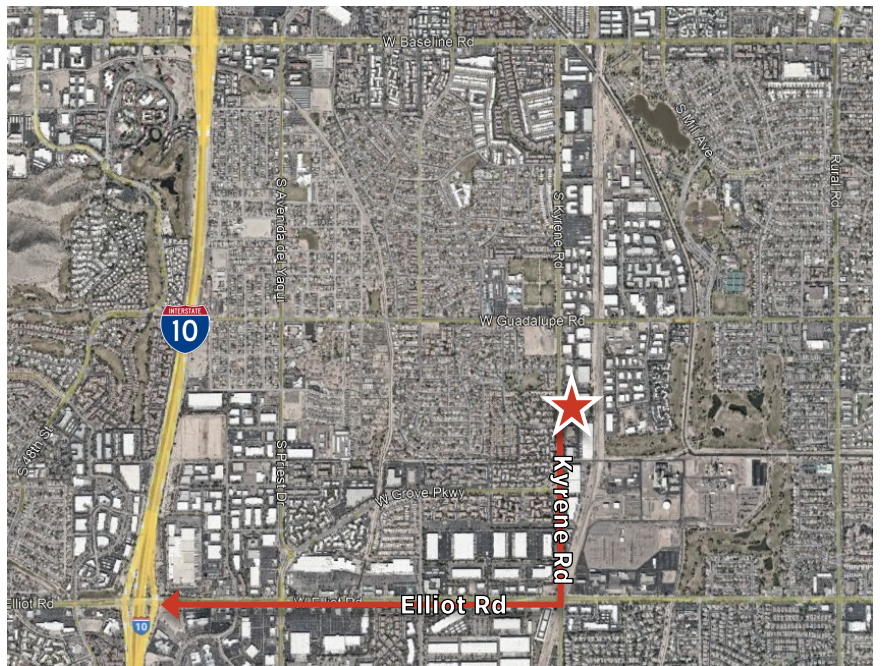
**Kyrene Commons South**  
6655 S Kyrene Road  
Tempe, AZ

114,037 Square Feet Available



## BUILDING HIGHLIGHTS

- 156,410 SF building
- 114,037 SF available
  - Suite 101: 36,537 SF
  - Suite 100: 77,500 SF
- 26' clear height
- Dock high and grade level loading
- 52' x 40' column spacing
- ESFR sprinkler system
- Frontage on Kyrene Road
- GID Zoning
- Easy access to full diamond interchange at I-10 Freeway and Elliot Road
- 5 minutes from Sky Harbor International Airport



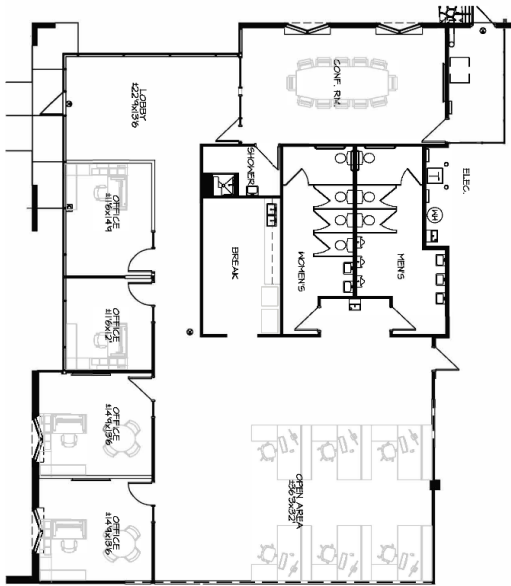
This information contained herein was obtained from sources deemed reliable and is believed to be true. It has not been verified and as such, cannot be warranted nor form any part of any future contract.



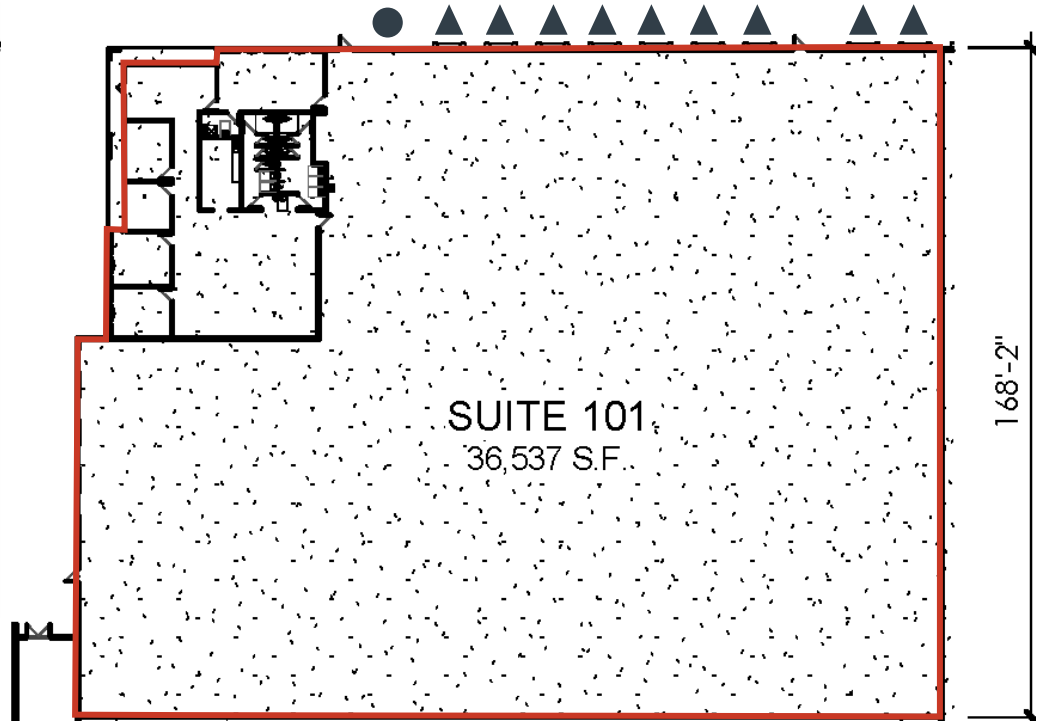
# CLARION PARTNERS

Kyrene Commons South, Suite 101

## 36,537 SF Available



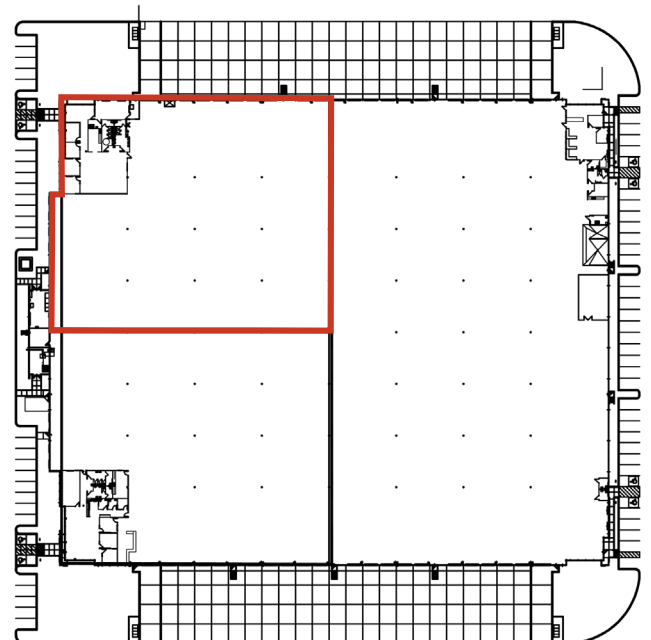
3,600 SF office



▲ Dock High Door      ● Grade Level Door

### SUITE 101

- 36,537 SF available
- 3,600 SF office
- 26' clear height
- 9 dock high doors
- 1 grade level door
- 52' x 40' column spacing
- ESFR sprinkler system

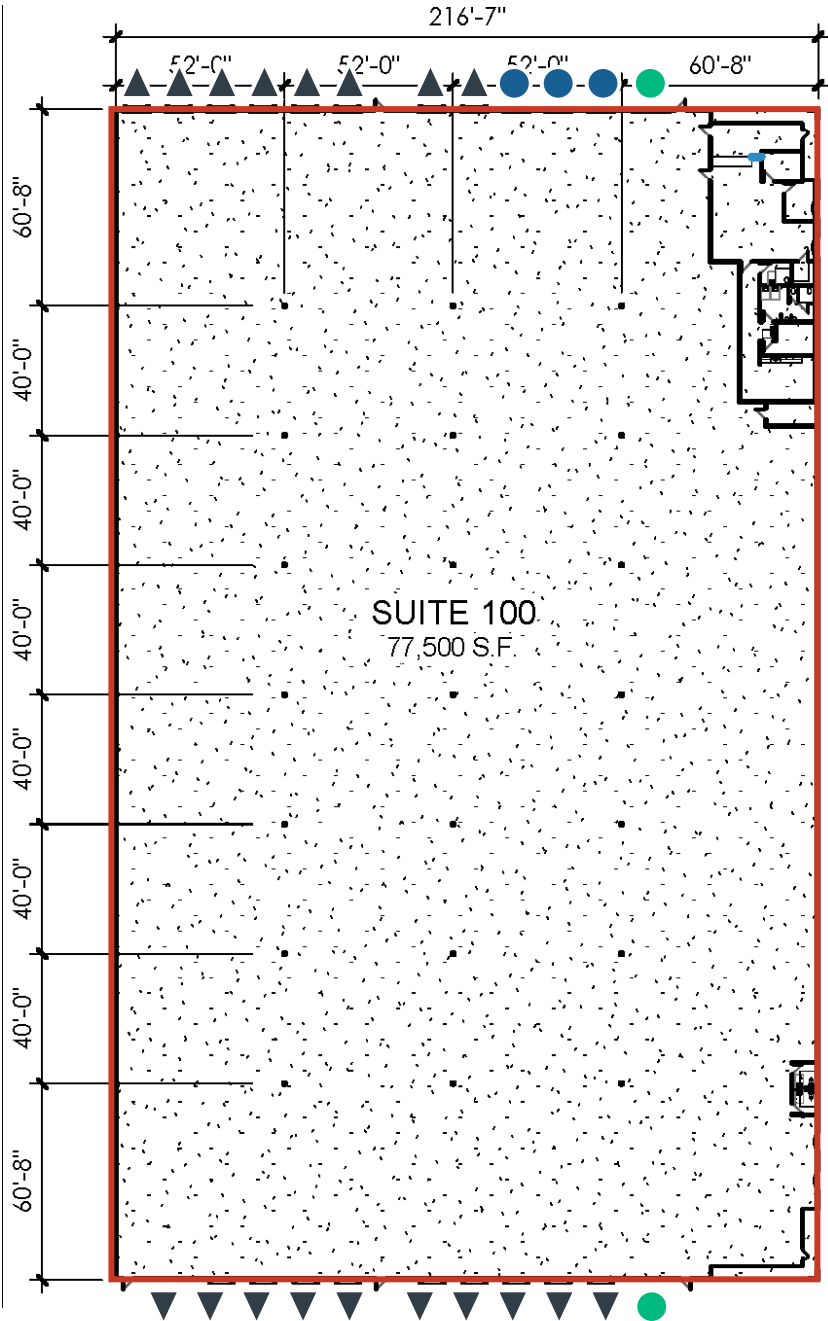




# CLARION PARTNERS

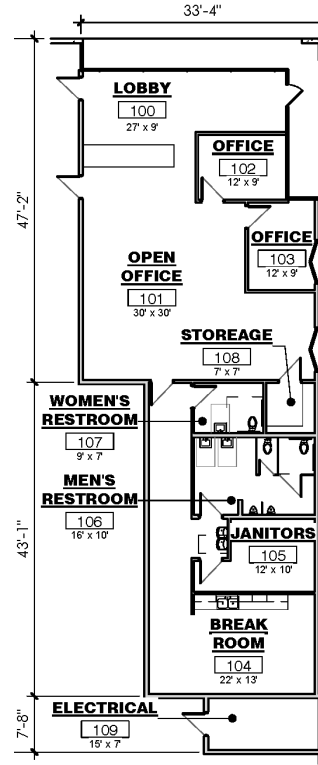
Kyrene Commons South, Suite 100

## 77,500 SF Available



SUITE 100  
77,500 S.F.

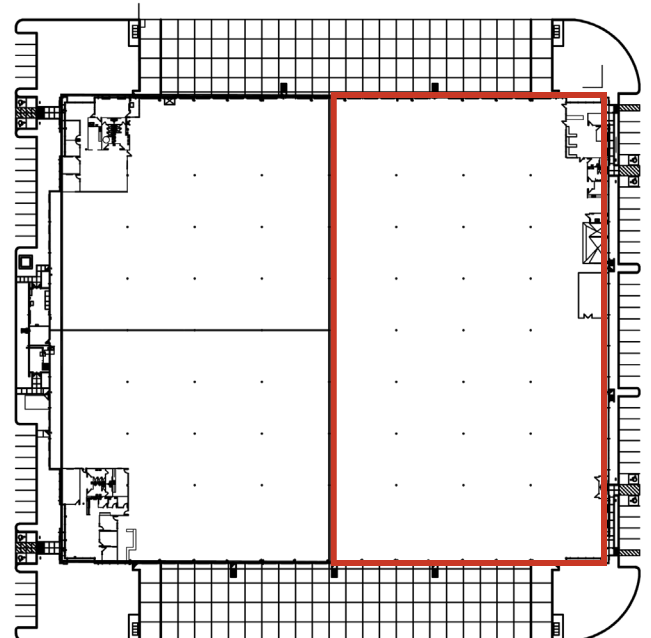
- ▲ Dock High Door
- 9' x 10' Grade Level Door
- 12' x 14' Grade Level Door



2,740 SF office

### SUITE 100

- 77,500 SF available
- 2,740 SF office
- 26' clear height
- 18 dock high doors
- 5 grade level doors
- 52' x 40' column spacing
- ESFR sprinkler system







# CLARION PARTNERS

## Kyrene Commons South



# CLARION PARTNERS

[www.clarionpartners.com](http://www.clarionpartners.com)

For more information on this opportunity, please contact



**Steve Larsen, SIOR, CCIM**  
602.282.6296  
[Steve.Larsen@jll.com](mailto:Steve.Larsen@jll.com)

**Kyle Westfall, SIOR**  
602.451.3057  
[Kyle.Westfall@jll.com](mailto:Kyle.Westfall@jll.com)

**Steve Sayre**  
602.999.7720  
[Steve.Sayre@jll.com](mailto:Steve.Sayre@jll.com)

This information contained herein was obtained from sources deemed reliable and is believed to be true. It has not been verified and as such, cannot be warranted nor form any part of any future contract.