

OFFICE SPACE FOR LEASE

1401 Kempsville Road, Suite A
Chesapeake, Virginia 23320

AVAILABLE SEPTEMBER 1, 2023



- 1,724 Square Foot Office Space Available
- \$17.75 per square foot (\$2,550.00/month), Modified Net
- Built in 2003, zoned B-1
- Central location in Greenbrier at Volvo Parkway & Kempsville Road
- Ideal for professional users

The information presented in this marketing flyer is obtained from sources believed to be reliable, but is not warranted.
This offer is subject to prior sale or lease, errors, omissions or withdrawal without notice.

EXCLUSIVELY OFFERED BY :

CONTACT:

BILL BRACKMAN

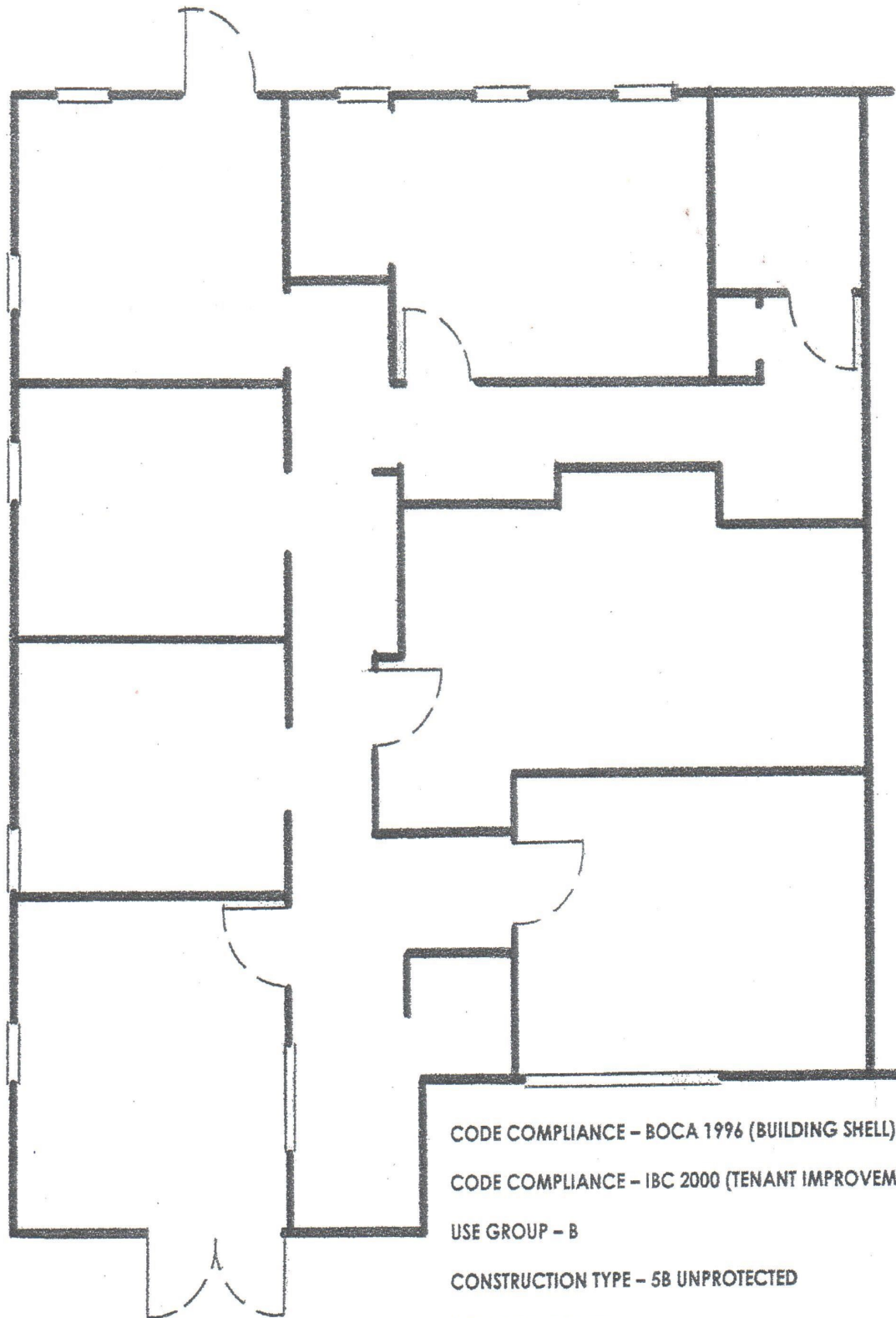
bbrackman@riddleassociates.com

(757) 523-1900

RIDDLE ASSOCIATES, INC.

Commercial Real Estate

"Real Estate Services Tailored to Your Needs"



CODE COMPLIANCE - BOCA 1996 (BUILDING SHELL)

CODE COMPLIANCE - IBC 2000 (TENANT IMPROVEMENTS)

USE GROUP - B

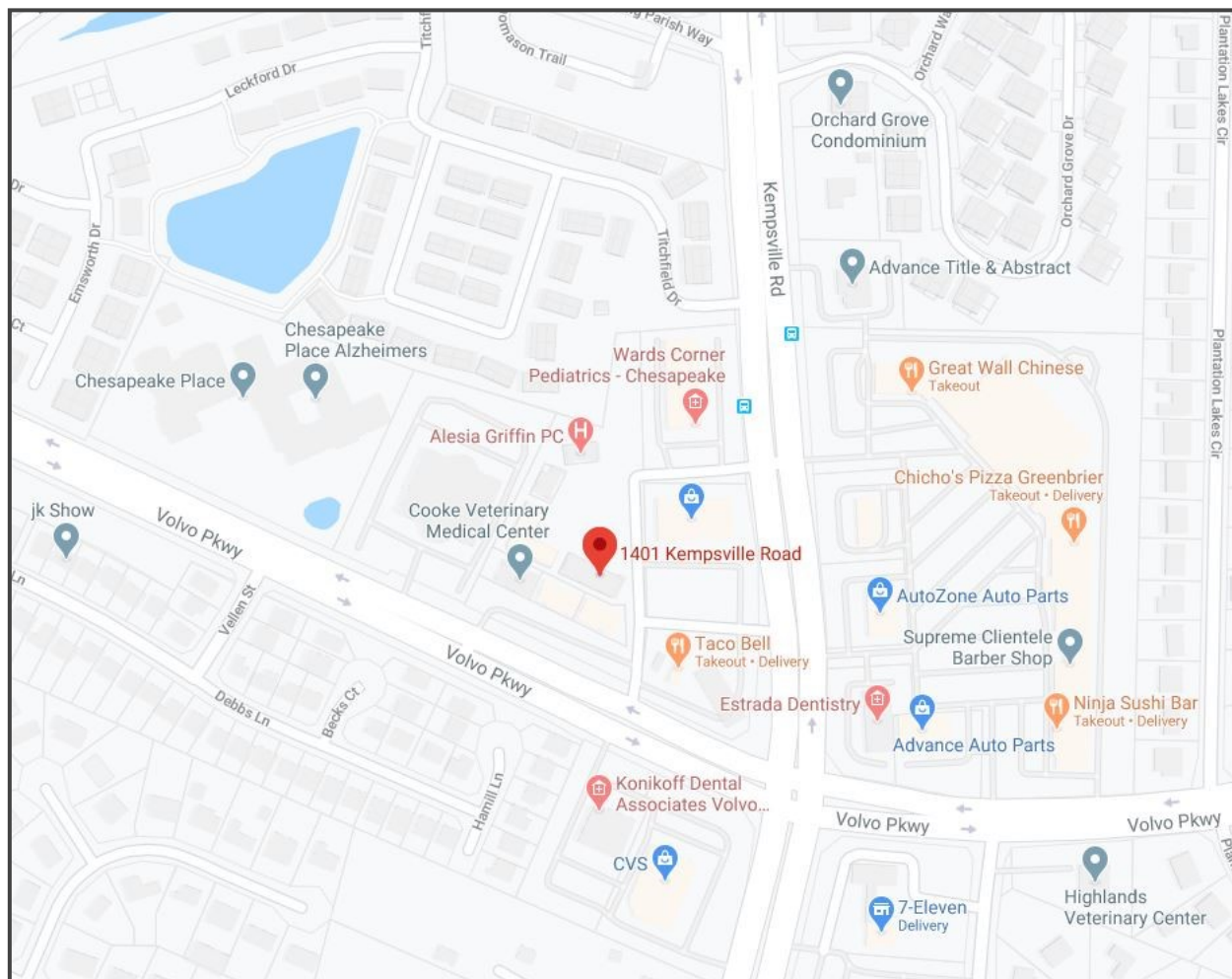
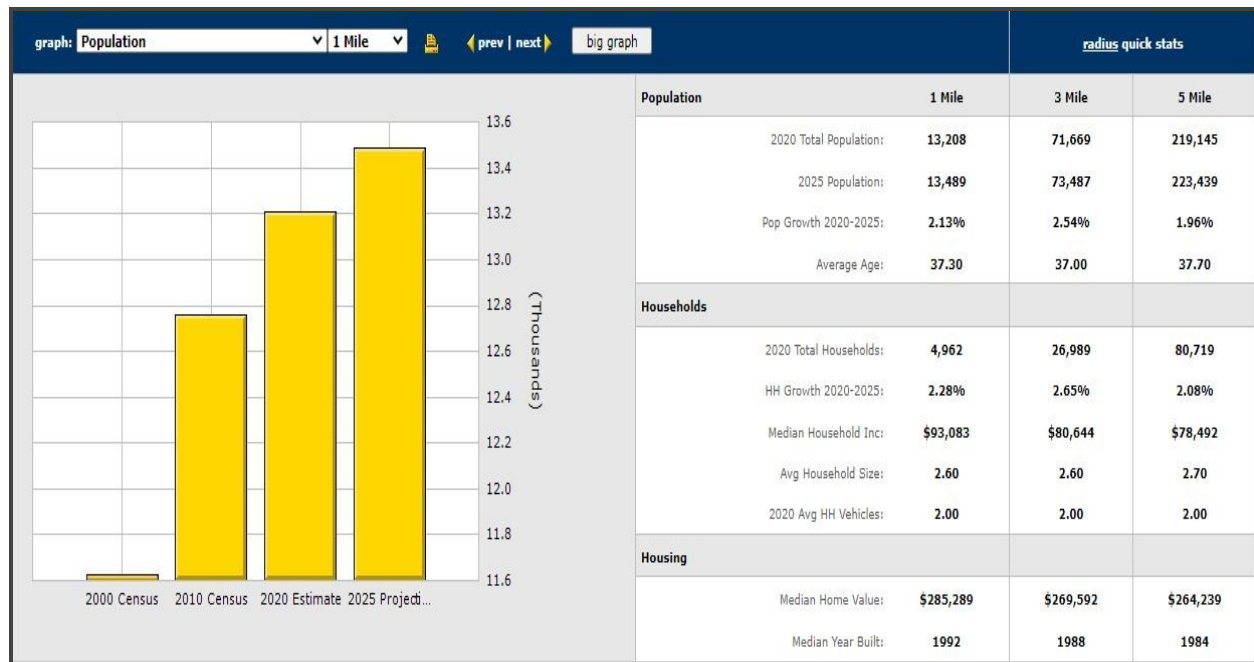
CONSTRUCTION TYPE - 5B UNPROTECTED

1,724 SQUARE FEET

OCCUPANCY LOAD - 17

1401 Kempsville Road, Suite A Chesapeake, VA 23320

*The information presented in this marketing flyer is obtained from sources believed to be reliable, but is not warranted.
This offer is subject to prior sale or lease, errors, omissions or withdrawal without notice.*



1401 Kempsville Road, Suite A Chesapeake, VA 23320

The information presented in this marketing flyer is obtained from sources believed to be reliable, but is not warranted. This offer is subject to prior sale or lease, errors, omissions or withdrawal without notice.