

27425 - 27575 MICHIGAN AVE.  
INKSTER, MICHIGAN

RETAIL FOR LEASE  
3,085 – 10,900 Square Feet Available



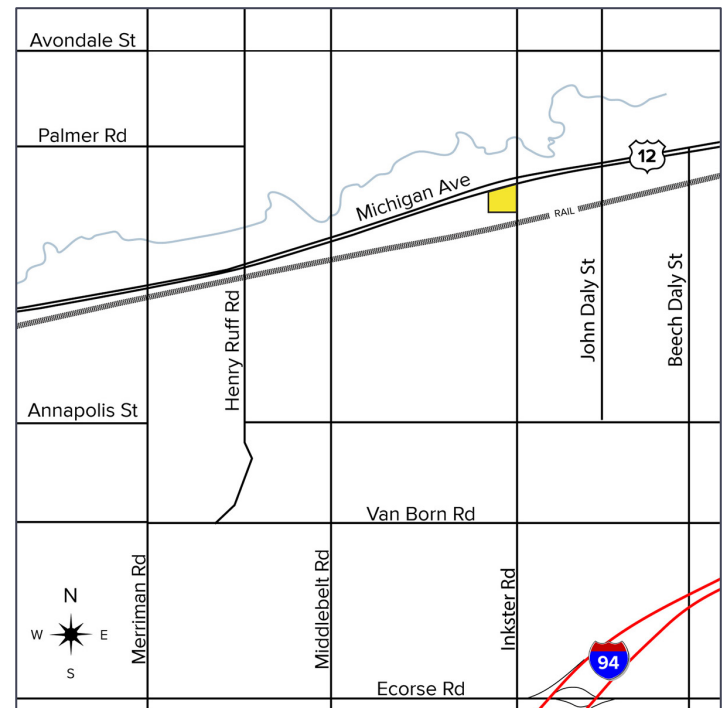
**SIGNATURE  
ASSOCIATES**  
KNOW SIGNATURE | KNOW RESULTS

**THE SHOPS AT CITY CENTER**



## PROPERTY FEATURES

- 3,085 – 10,900 square feet available
- High-visibility retail opportunity at the signalized intersection of Michigan Avenue and Inkster Road, with combined traffic counts exceeding 41,000 vehicles per day
- The center offers excellent access, strong frontage along Michigan Avenue, and flexible space options
- Located within an established retail corridor
- Lease Rate: \$12.00-\$17.00/sq. ft. NNN



For more information, please contact:

**RICHARD PIFER**  
(248) 799 3158  
rpifer@signatureassociates.com

**BRUCE D. BAJA**  
(248) 799 3177  
bbaja@signatureassociates.com

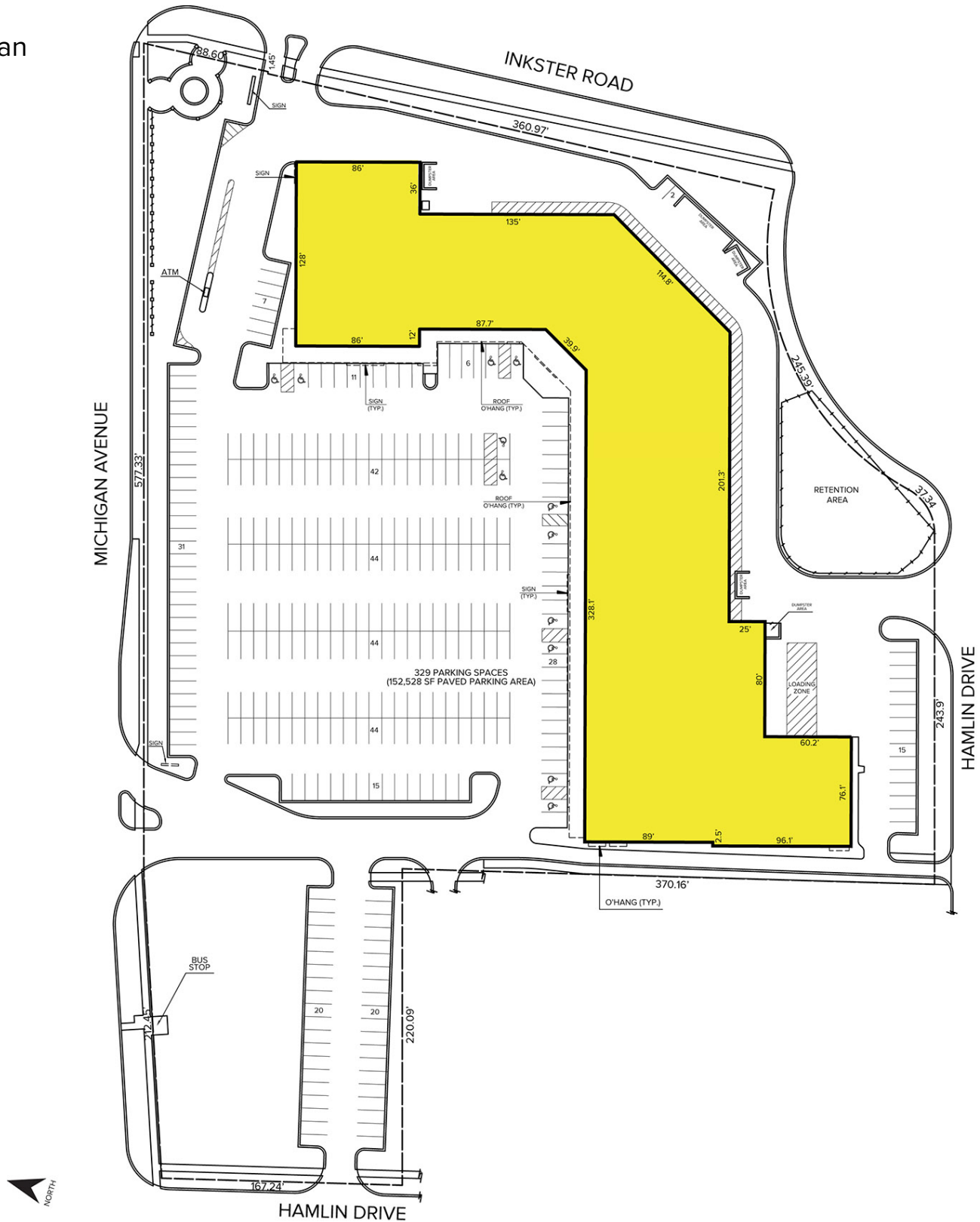
**SIGNATURE ASSOCIATES**  
One Towne Square, Suite 1200  
Southfield, MI 48076  
www.signatureassociates.com

# 27425 – 27575 Michigan Avenue – Inkster, Michigan

Retail For Lease

3,085 – 10,900  
Square Feet  
AVAILABLE

## Site Plan



For more information, please contact:

**RICHARD PIFER**  
(248) 799 3158  
rpifer@signatureassociates.com

**BRUCE D. BAJA**  
(248) 799 3177  
bbaja@signatureassociates.com

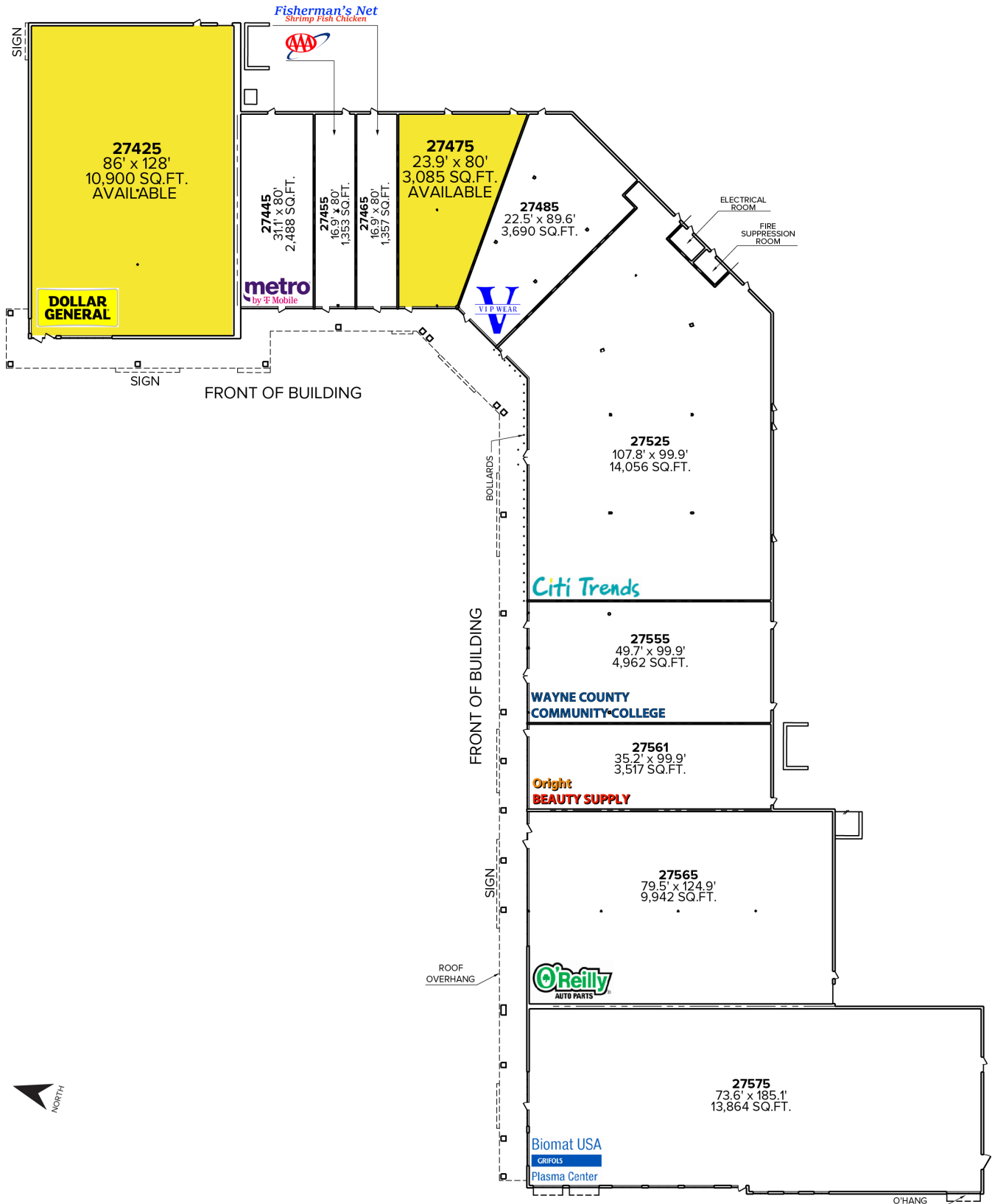
**SIGNATURE ASSOCIATES**  
One Towne Square, Suite 1200  
Southfield, MI 48076  
www.signatureassociates.com

# 27425 – 27575 Michigan Avenue – Inkster, Michigan

## Retail For Lease

3,085 – 10,900  
Square Feet  
AVAILABLE

Floor Plan



For more information, please contact:

**RICHARD PIFER**  
(248) 799 3158  
rpifer@signatureassociates.com

**BRUCE D. BAJA**  
(248) 799 3177  
bbaja@signatureassociates.com

**SIGNATURE ASSOCIATES**  
One Towne Square, Suite 1200  
Southfield, MI 48076  
www.signatureassociates.com

# 27425 – 27575 Michigan Avenue – Inkster, Michigan

Retail For Lease

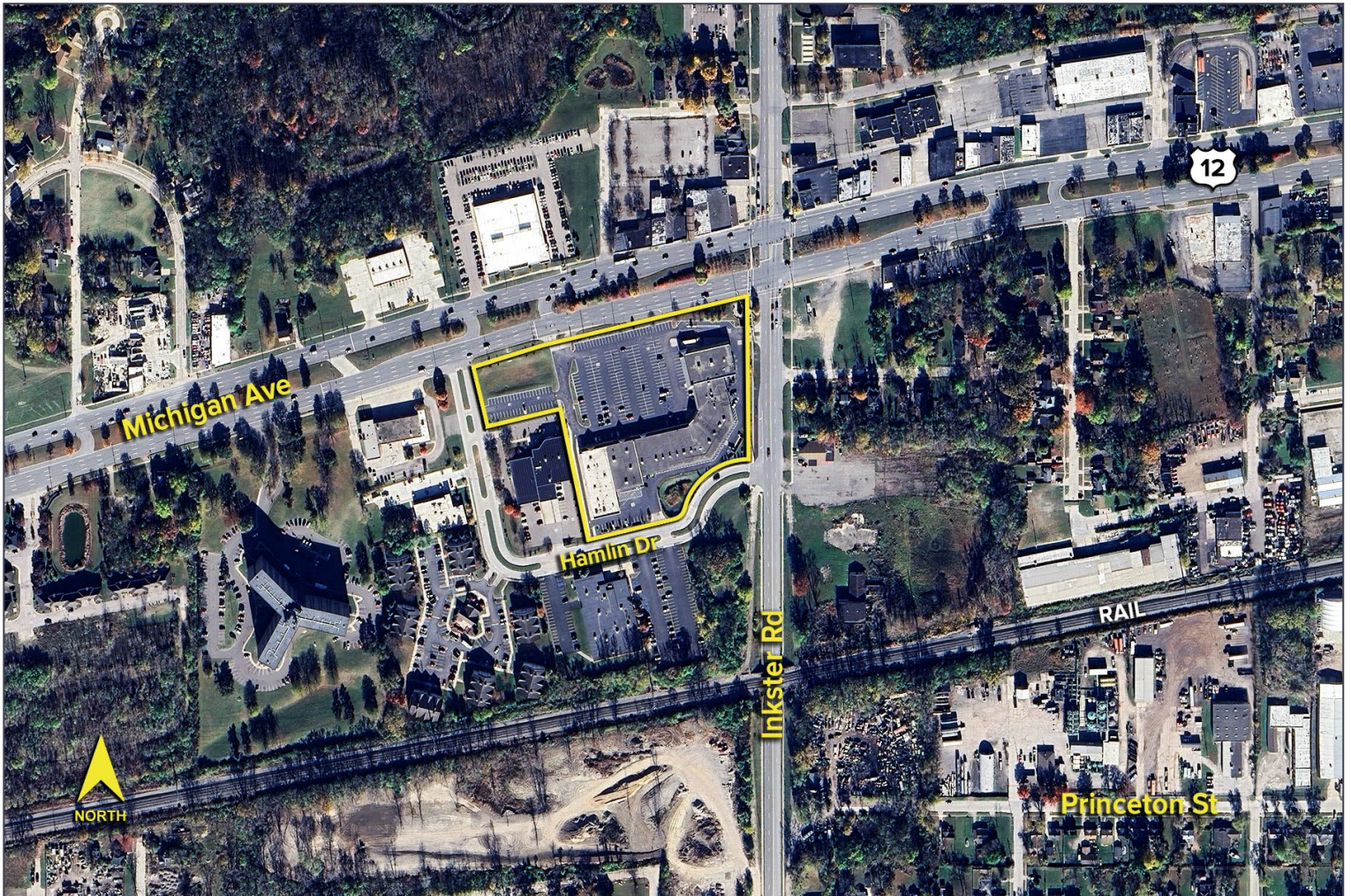
3,085 – 10,900  
Square Feet  
AVAILABLE

## DEMOGRAPHICS

	POPULATION	MED. HH INCOME
1 MILE	10,824	\$44,159
3 MILE	118,761	\$65,881
5 MILE	285,792	\$67,086

## TRAFFIC COUNTS (TWO-WAY)

29,914	Michigan Ave. W of Inkster Rd.
30,526	Michigan Ave. E of Inkster Rd.
11,252	Inkster Rd. S of Michigan Ave.
13,770	Inkster Rd. N of Michigan Ave.



For more information, please contact:

**RICHARD PIFER**  
(248) 799 3158  
rpifer@signatureassociates.com

**BRUCE D. BAJA**  
(248) 799 3177  
bbaja@signatureassociates.com

**SIGNATURE ASSOCIATES**  
One Towne Square, Suite 1200  
Southfield, MI 48076  
www.signatureassociates.com