



LDC
PROPERTIES

management
development
sales/leasing



912 WOODLAWN RD.

Lincoln, IL 62656

FOR LEASE:

11,000SF @ \$4/sf

PROPERTY HIGHLIGHTS

- 11,000 sq. ft. available (133' x 76.5')
- Large parking field adjacent to warehouse
- Large standalone pylon signage
- Huge Clearance w/ pull thru capability
- Great visibility on Woodlawn
- Highest trafficked location in town 12,000 VPD!
- Close to shopping, restaurants, medical

CONTACT US

314.580.4095

STEVEN CARRICO

steven@ldc-properties.com

DAN EICHELBERGER

dan@ldc-properties.com

www.ldc-properties.com



management
development
sales/leasing

CONTACT US
314.580.4095

www ldc-properties.com

STEVEN CARRICO
steven@ldc-properties.com

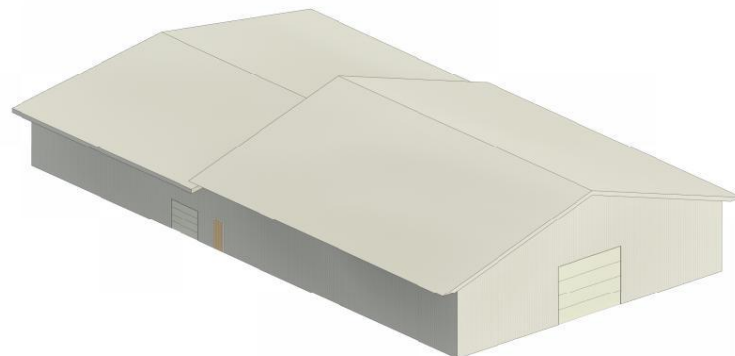
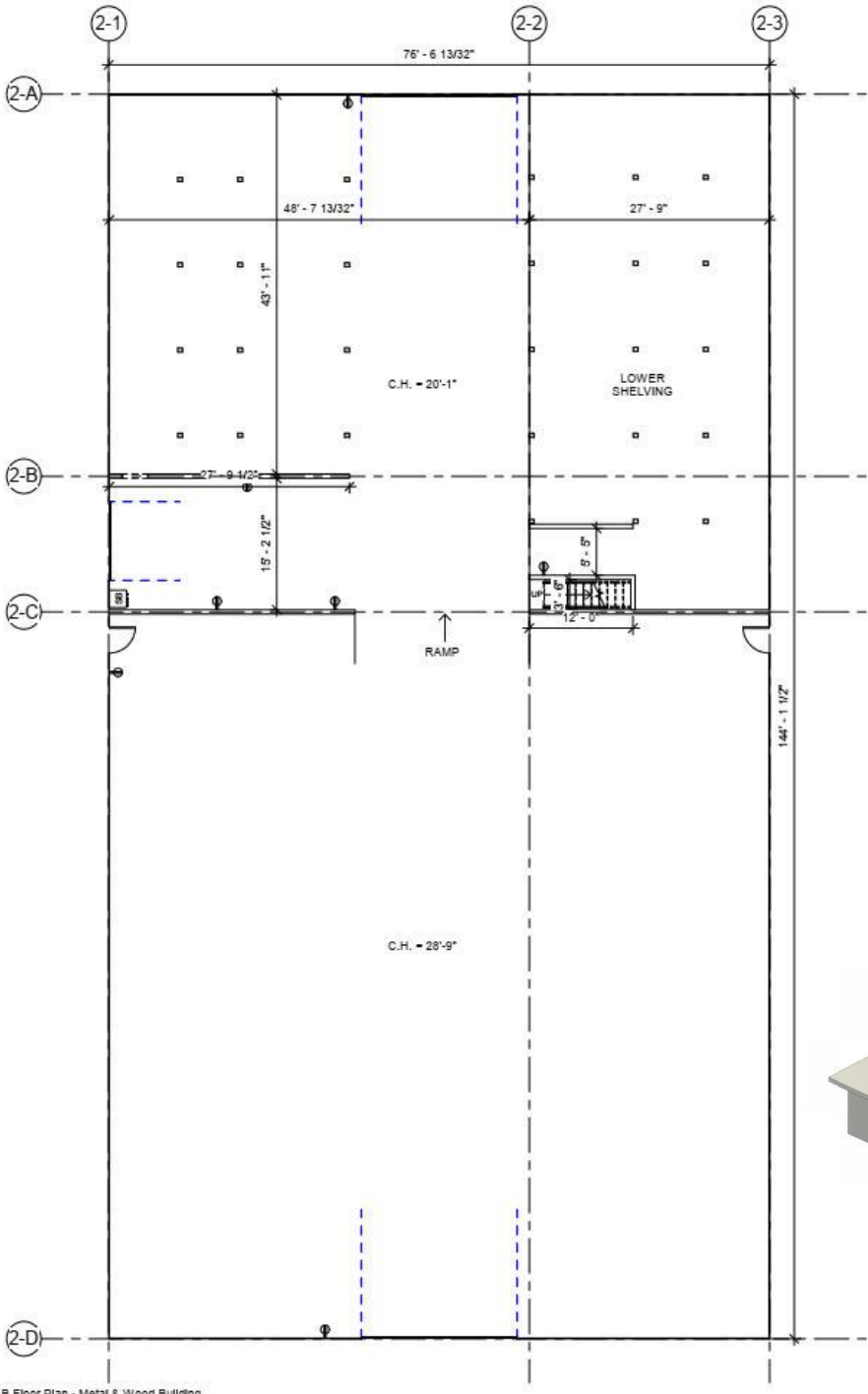
DAN EICHELBERGER
dan@ldc-properties.com

912 WOODLAWN RD.

Lincoln, IL 62656

FOR LEASE:

11,000SF @ \$4/sf



Building B Floor Plan - Metal & Wood Building
1/8" = 1'-0"