

1750 K ST NW

Washington, DC 20006

Office For Lease

3,754 - 12,911 SF



Leasing Information:
202.513.6700

Lincoln

Merrill Turnbull
202.513.6713
mturnbull@lpc.com

Adam Biberaj
202.513.6736
abiberaj@lpc.com

Tim Whitebread
202.513.6712
twhitebread@lpc.com

McKay Elliott
202.513.6724
melliott@lpc.com

Lincoln Property Company
101 Constitution Avenue, NW Suite 325 East
Washington, DC 20001

www.lpc.com

1750 K ST NW

Washington, DC 20006

Office For Lease



Property Highlights

- Heart of downtown Washington, DC located on K Street
- Walking distance to Farragut West and Farragut North Metro stations
- Energy Star Labeled
- Plug-and-Play Space Available for office-intensive users
- Single offices on shared floor for executive office needs

Availabilities

SF

Date Available

Typical Floor

12,508 SF

Immediately

Lower Level

12,911 SF

Immediately

1st Floor

10,300 SF

Immediately

Mezzanine

5,260 SF

Immediately

2nd Floor

6,254 SF

Immediately

3rd Floor

12,508 SF

Immediately

Suite 400

3,754 SF

Immediately

Suite 450

6,803 SF

Immediately

5th Floor

12,508 SF

Immediately

6th Floor

12,508 SF

Immediately

7th Floor

12,508 SF

Immediately

8th Floor

12,508 SF

Immediately

9th Floor

12,508 SF

Immediately

10th Floor

12,508 SF

Immediately

11th Floor

11,654 SF

Immediately

12th Floor

10,526 SF

Immediately

Merrill Turnbull

202.513.6713
mturnbull@lpc.com

Adam Biberaj

202.513.6736
abiberaj@lpc.com

Tim Whitebread

202.513.6712
twhitebread@lpc.com

McKay Elliott

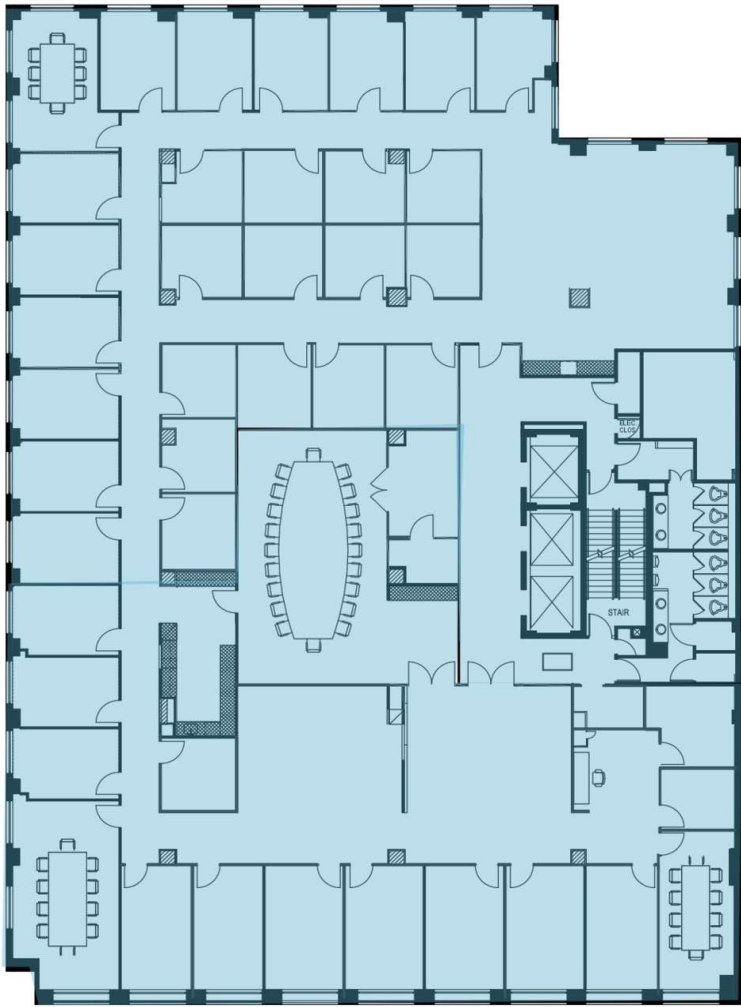
202.513.6724
melliott@lpc.com

Lincoln

1750 K ST NW

Washington, DC 20006

2nd Floor



K Street



| Suite | Size | Description | Virtual Tour |
|-------------|----------|--|---------------------------|
| ■ 2nd Floor | 6,254 SF | Available Immediately. Furnished, move-in ready space! | View Here |

Merrill Turnbull
202.513.6713
mturnbull@lpc.com

Adam Biberaj
202.513.6736
abiberaj@lpc.com

Tim Whitebread
202.513.6712
twhitebread@lpc.com

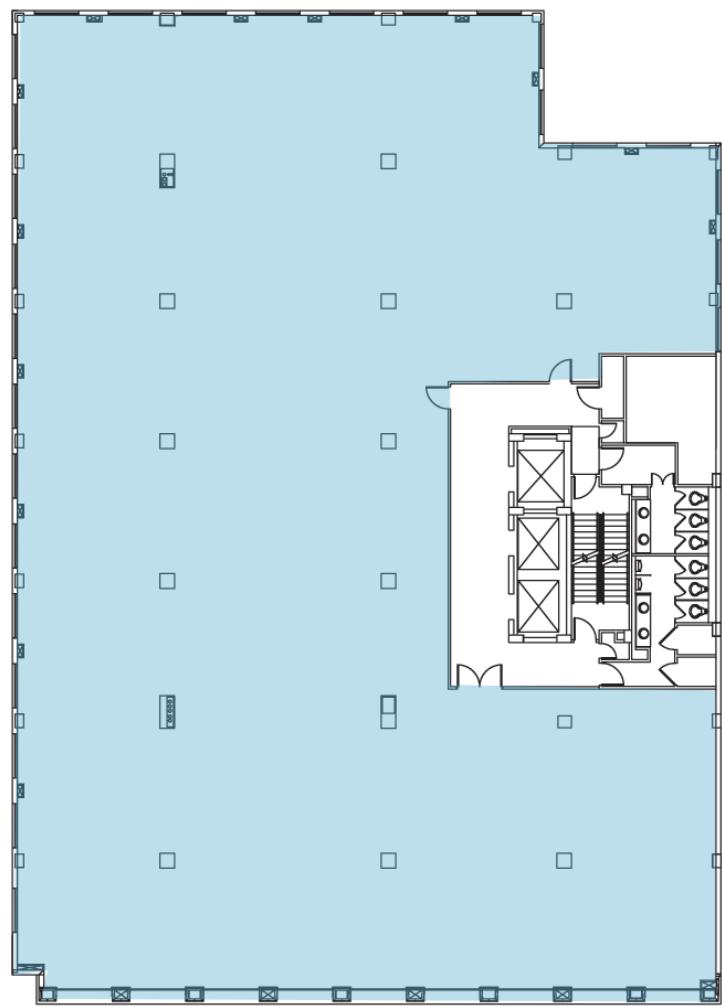
McKay Elliott
202.513.6724
melliott@lpc.com

Lincoln

1750 K ST NW

Washington, DC 20006

Typical Floorplan



| Suite | Size | Description |
|-----------------|-----------|-----------------------------------|
| ■ Typical Floor | 12,508 SF | Full Floors Available Immediately |

Merrill Turnbull
202.513.6713
mturnbull@lpc.com

Adam Biberaj
202.513.6736
abiberaj@lpc.com

Tim Whitebread
202.513.6712
twhitebread@lpc.com

McKay Elliott
202.513.6724
melliott@lpc.com

Lincoln



1750 K ST NW

Washington, DC 20006

Leasing Information:
202.513.6700

Merrill Turnbull
202.513.6713
mturnbull@lpc.com

Adam Biberaj
202.513.6736
abiberaj@lpc.com

Tim Whitebread
202.513.6712
twhitebread@lpc.com

McKay Elliott
202.513.6724
melliott@lpc.com

Lincoln

Lincoln Property Company
101 Constitution Avenue, NW Suite 325 East
Washington, DC 20001

www.lpc.com