



Studio 55 Architects, LLP
10700 Highway 55, Suite 275
Plymouth, MN 55441
763.544.8370
studio55architects.com

CODE INFORMATION

APPLICABLE CODES AND REGULATIONS:

- 2016 MINNESOTA STATE BUILDING CODE / 2016 INTERNATIONAL BUILDING CODE
- 2016 MINNESOTA CONSERVATION CODE FOR EXISTING BUILDINGS
- 2016 MINNESOTA ACCESSIBILITY CODE CHAPTER 13A1 / CH. II. 2012 IBC / ANSI A171 - 2009
- 2016 MINNESOTA ENERGY CODE / ASHRAE 90.1 - 2010
- ADA - AMERICANS WITH DISABILITIES ACT

PROPERTY DESCRIPTION:

THE SHOPS AT 1700
1700 PLYMOUTH ROAD
MINNETONKA, MN 55209

CONSTRUCTION TYPE:

TYPE II-B (SECTION 602.2)
MERCANTILE GROUP M (SECTION 509.1)
SPRINKLERED

OCCUPANT LOAD:

901 SF / 60 = 16 OCCUPANTS

EXIT WIDTH:

16 X 0.2' = 3.2' PROVIDED 72"

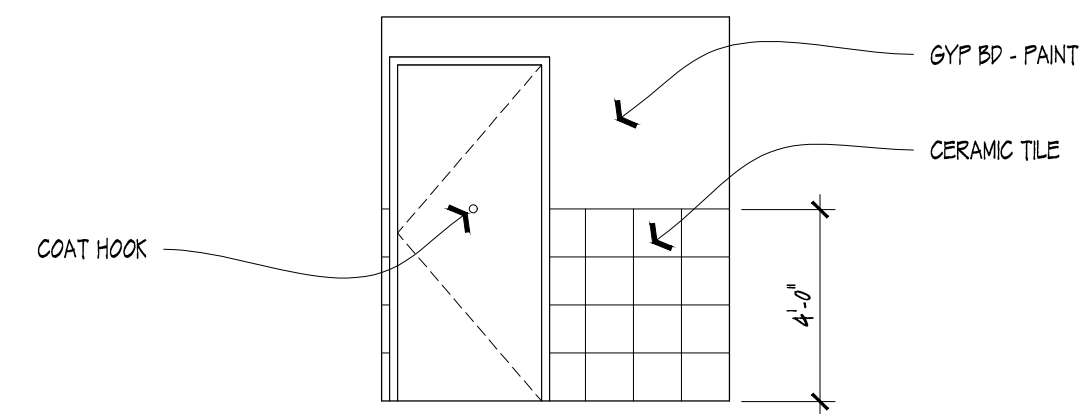
REQUIRED EXITS:

1 (TABLE 1016.1) PROVIDED: 2

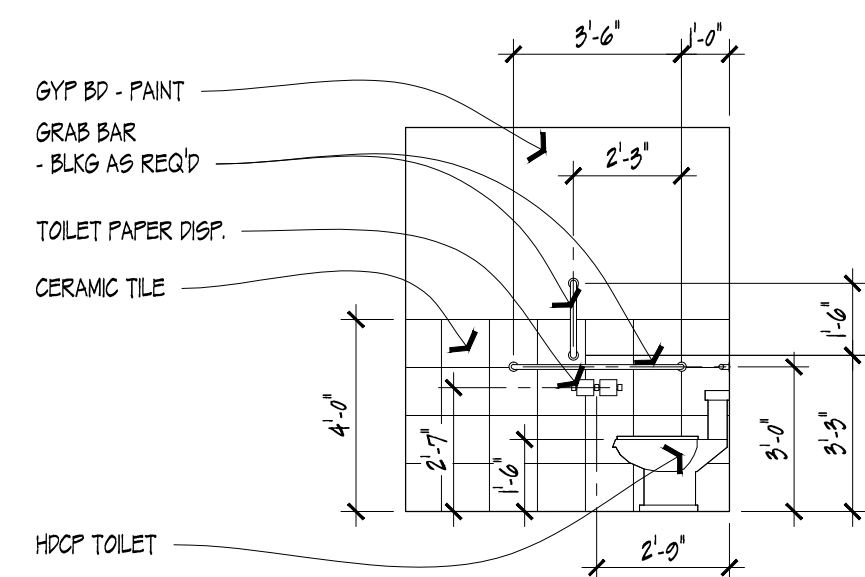
ALLOWABLE:

TRAVEL DISTANCE: 250'-0" (TABLE 1016.2)
COMMON PATH: 75'-0" (TABLE 1014.3)
1 TOILET & 1 LAV
(SECTION 2902.2 EXCEPTION 3 - SEPARATE FACILITIES SHALL NOT BE REQUIRED IN MERCANTILE OCCUPANCIES IN WHICH THE MAXIMUM OCCUPANT LOAD IS 100 OR LESS)
0 DRINKING FOUNTAIN (TABLE 2902.1 FOOTNOTE F)
1 SERVICE SINK

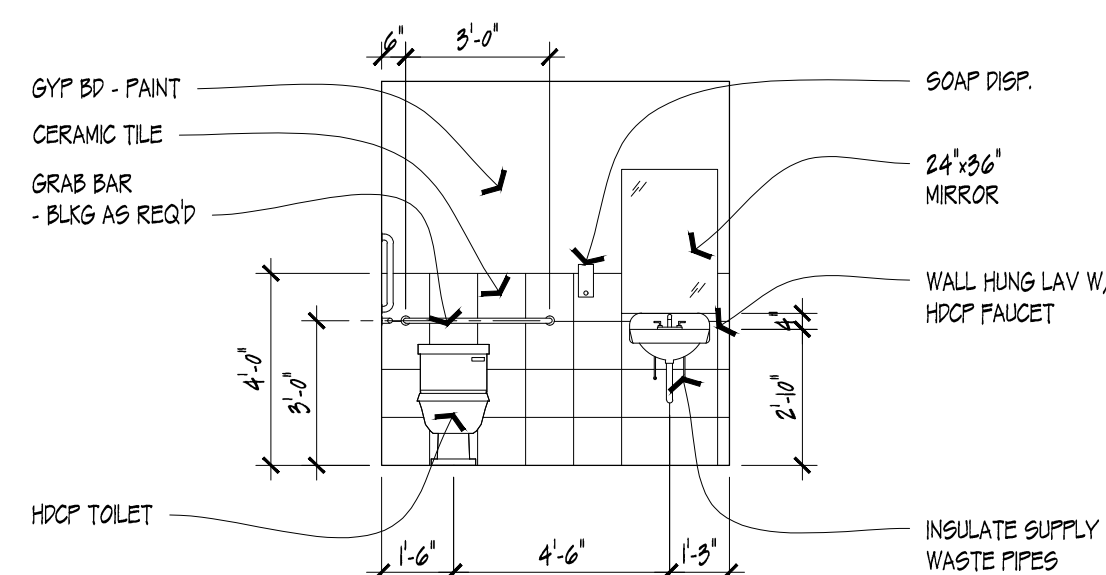
PLUMBING FIXTURES:



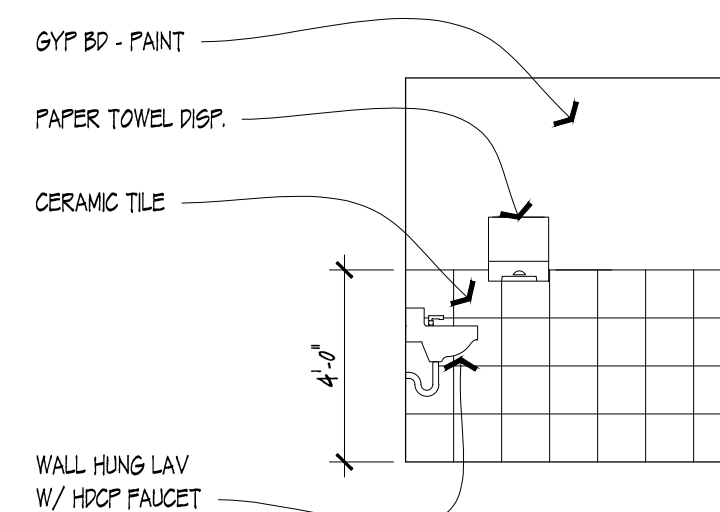
6 INTERIOR ELEVATION - RESTROOM 107
1/4" = 1'-0"



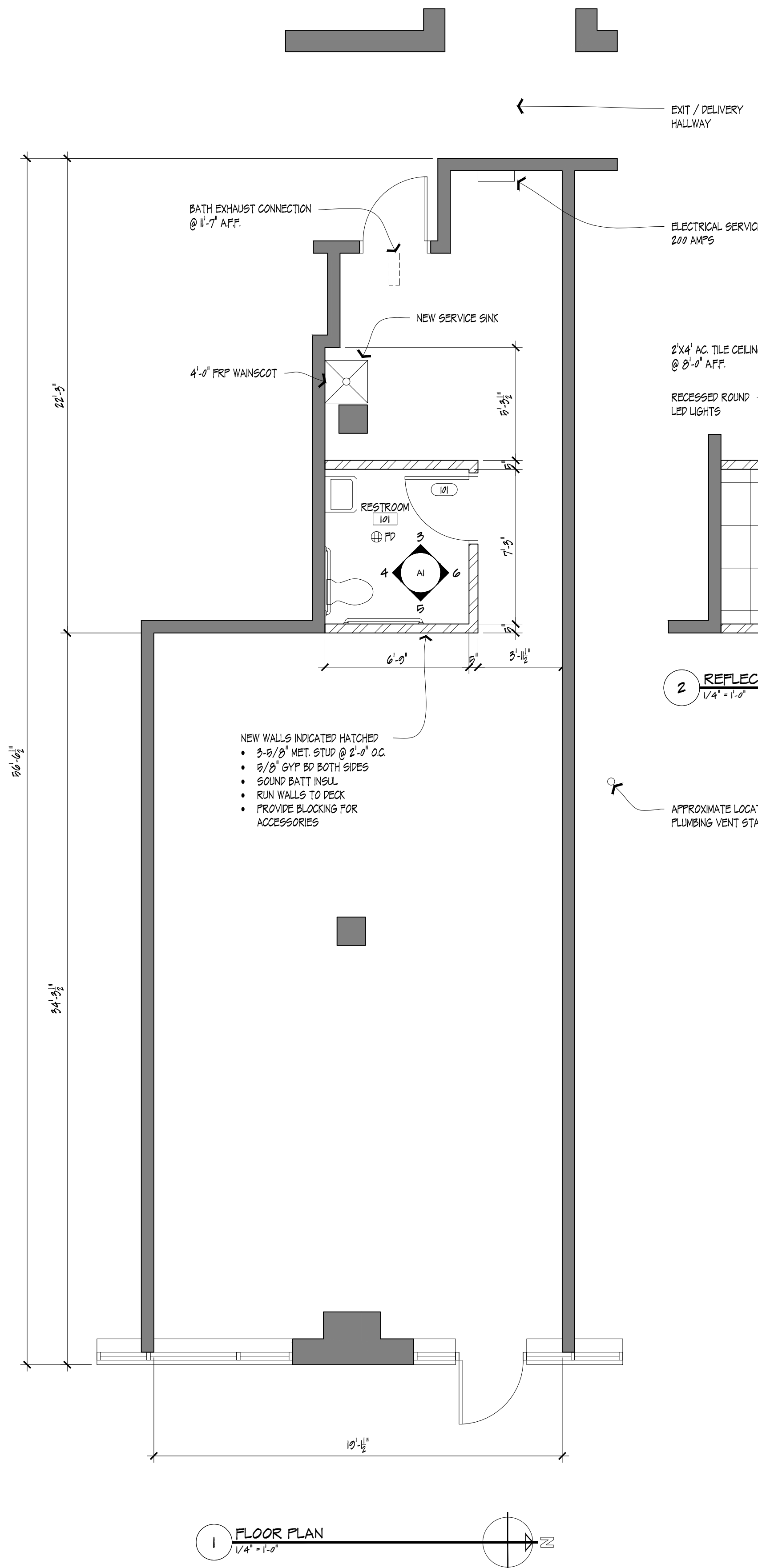
5 INTERIOR ELEVATION - RESTROOM 107
1/4" = 1'-0"



4 INTERIOR ELEVATION - RESTROOM 107
1/4" = 1'-0"



3 INTERIOR ELEVATION - RESTROOM 107
1/4" = 1'-0"



1 FLOOR PLAN
1/4" = 1'-0"

EXIT / DELIVERY HALLWAY

ELECTRICAL SERVICE
200 AMPS

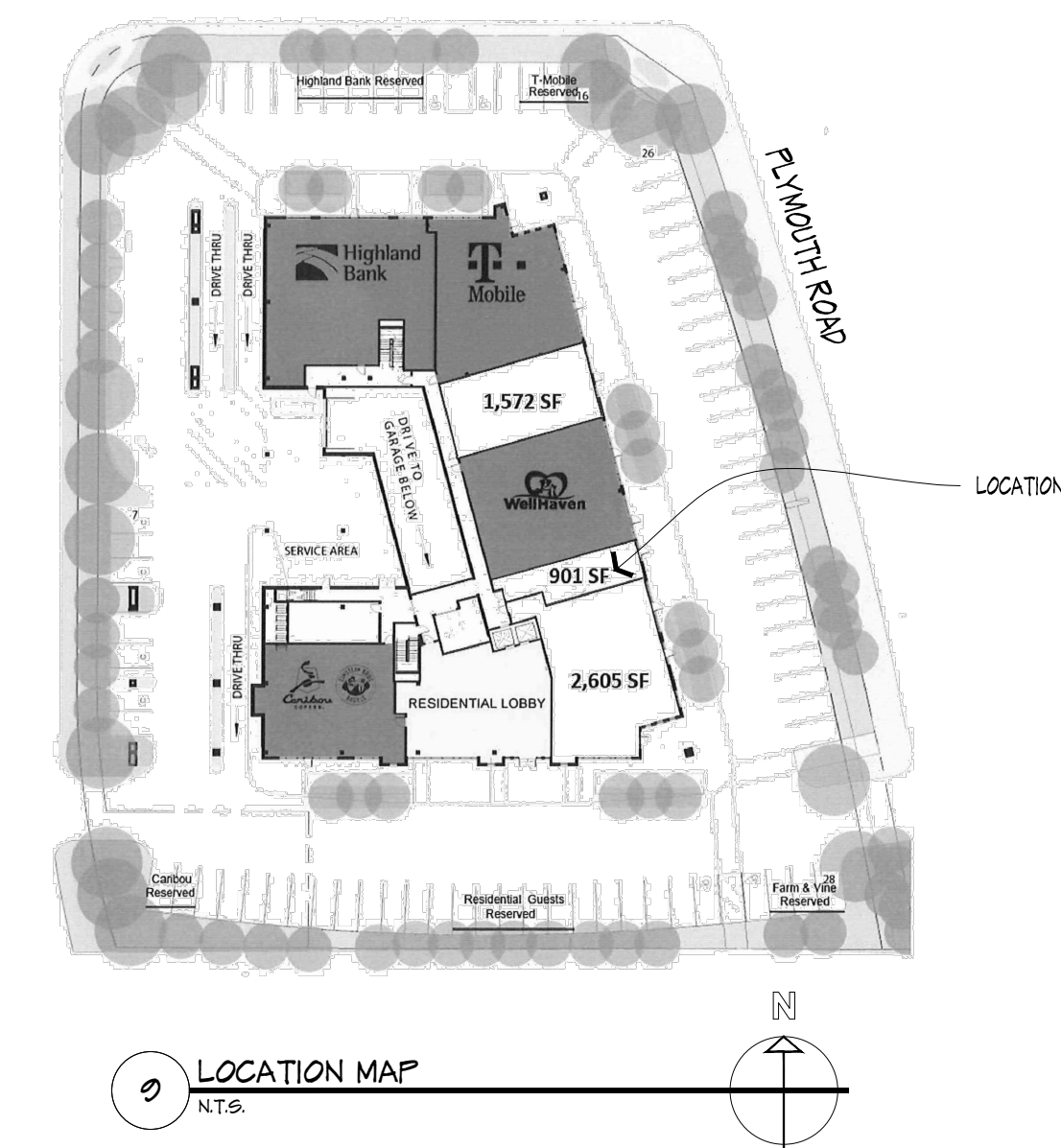
2'X4' AC TILE CEILING
@ 8'-0" AFF.

RECESSED ROUND
LED LIGHTS

2 REFLECTED CEILING PLAN
1/4" = 1'-0"

- NEW WALLS INDICATED HATCHED
- 3/8" MET. STUD @ 2'-0" O.C.
 - 5/8" GYP BD BOTH SIDES
 - SOUND BATT INSUL.
 - RUN WALLS TO DECK
 - PROVIDE BLOCKING FOR ACCESSORIES

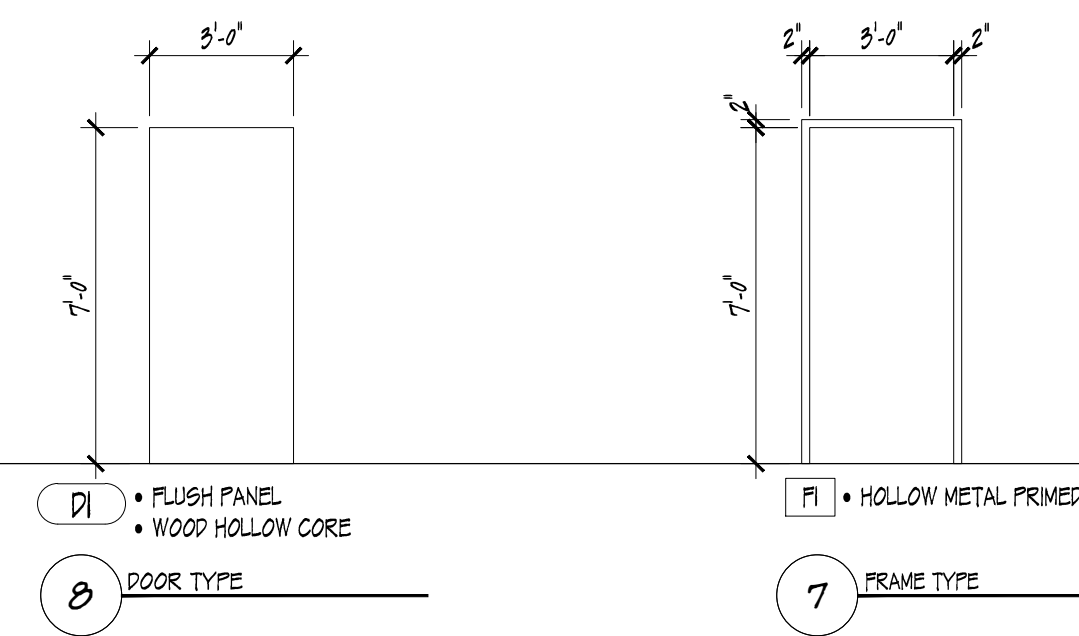
APPROXIMATE LOCATION OF
PLUMBING VENT STACK



3 LOCATION MAP
N.T.S.

ROOM FINISH SCHEDULE										
ROOM No.	DESCRIPTION	FLOOR		BASE		WALLS		CEILING		NOTES
		MATL	FINISH	MATL	TYPE	MATL	FINISH	HEIGHT	MATL	
101	RESTROOM	CONC	CT	CT	GYP BD	CT/PNT	8'-0"	AC TILE	4' CT WAINSCOT	

DOOR AND FRAME SCHEDULE									
DOOR No.	DOOR SIZE (WxH)	DOOR		FRAME		HOWE GROUP	FIRE RATING	NOTES	
		MATL	TYPE	MATL	TYPE				
101	3'-0" X 7'-0"	HM	DI	HM	FI	--	--	PROVIDE VACANT/OCCUPIED INDICATOR	



8 DOOR TYPE
• FLUSH PANEL
• WOOD HOLLOW CORE

7 FRAME TYPE
• HOLLOW METAL PRIMED

THE SHOPS AT 1700
SUITE - F
RESTROOM ADDITION
1700 PLYMOUTH RD
MINNETONKA, MN
55305

No.	Date	Revision

I hereby certify that this plan, specification, or report was prepared by me or under my direct supervision, and that I am a duly Licensed Architect under the laws of the State of Minnesota.

Printed Name: JACK AMDAL
Signature: *[Signature]*
Date: 03-25-20 License #: 17421

Project -
Date 03-25-20
Drawn by
Checked by
Drawing Number