

# 700

**SHADOW LANE**  
LAS VEGAS, NV 89106

**SHADOW LANE  
MEDICAL OFFICE  
FOR LEASE**

**SUITES RANGING FROM  
1,148-7,836 SF**



**MIKE TYMCZYN**

VICE PRESIDENT  
702.216.2371 **DIRECT**  
miket@dcghealthcare.com  
BS.0147041



**HEALTHCARE**



# 700

## SHADOW LANE

LAS VEGAS, NV 89106

### PROPERTY HIGHLIGHTS

- On the campus of Valley Hospital Medical Center
- Turnkey Suites Available
- Centrally located within the Las Vegas Medical District
- Easy access from I-15, US 95/93 and the Las Vegas strip
- Current specialties include: **Cardiology - Oncology - Internal Medicine**



HEALTHCARE

# Your Golden Opportunity in Central Las Vegas

AREA MAP

Leasing a medical office at Shadow Lane Medical Plaza means being a part of the Las Vegas Medical District (LVMD).

The LVMD is one of the most important economic development projects in Southern Nevada, enhancing and expanding access to quality medical care advancing a higher quality of life. The LVMD is a collaborative effort between the City of Las Vegas and its downtown medical community.

Shadow Lane Medical Office, indicated on the map below, offers your patients easy access from anywhere in the Las Vegas Valley and provides you, the tenant, with an affordable option to contribute to Las Vegas' medical future.



**GOLDRING  
MEDICAL PLAZA**



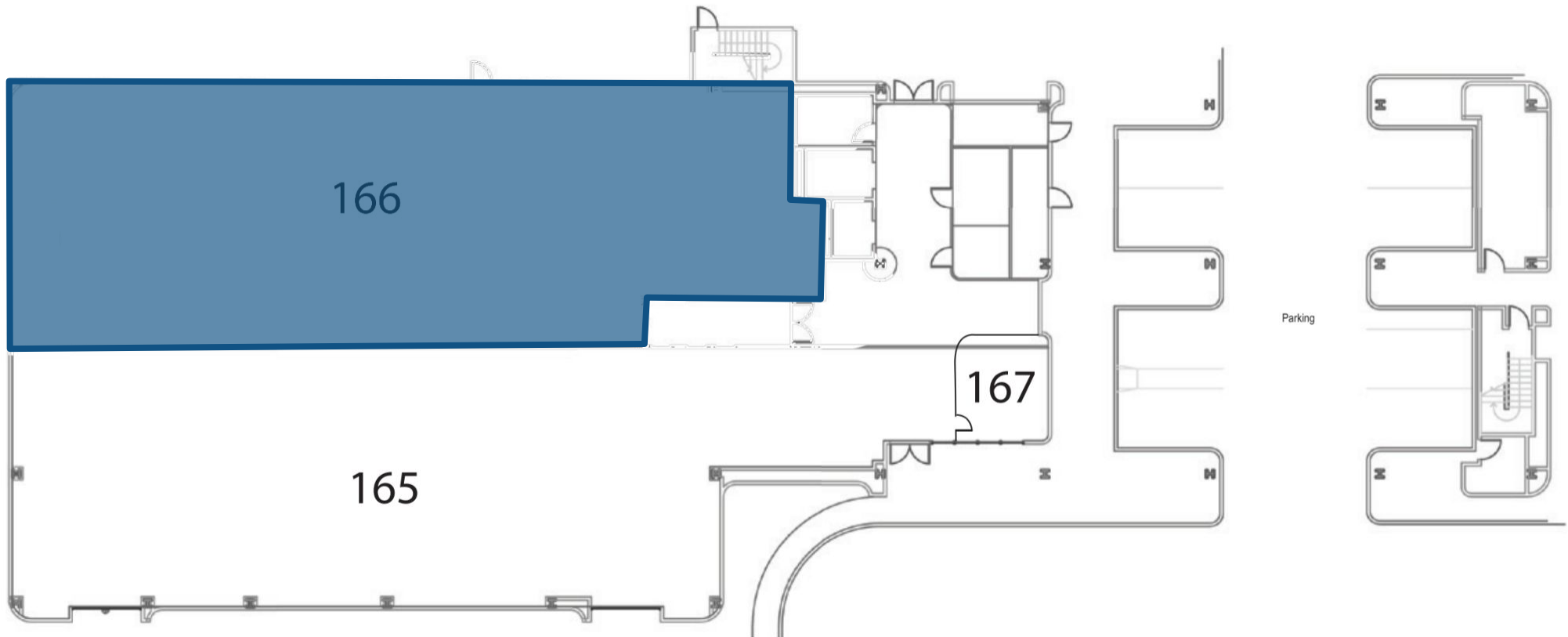
**SHADOW LANE  
MEDICAL OFFICE**



# FIRST FLOOR

## AVAILABLE SUITES

SUITE 166	4,697 SF
-----------	----------



SHADOW LANE MEDICAL OFFICE  
SUITE 166



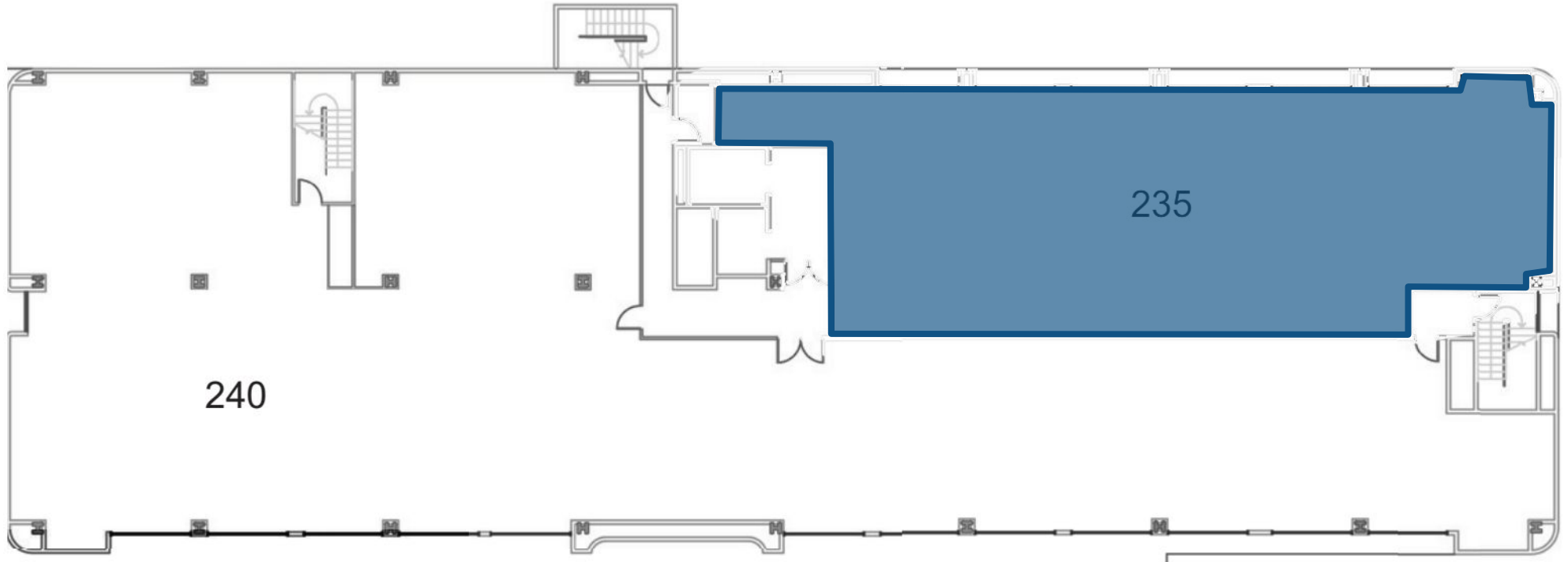
SHADOW LANE MEDICAL OFFICE  
SUITE 166



# SECOND FLOOR

## AVAILABLE SUITES

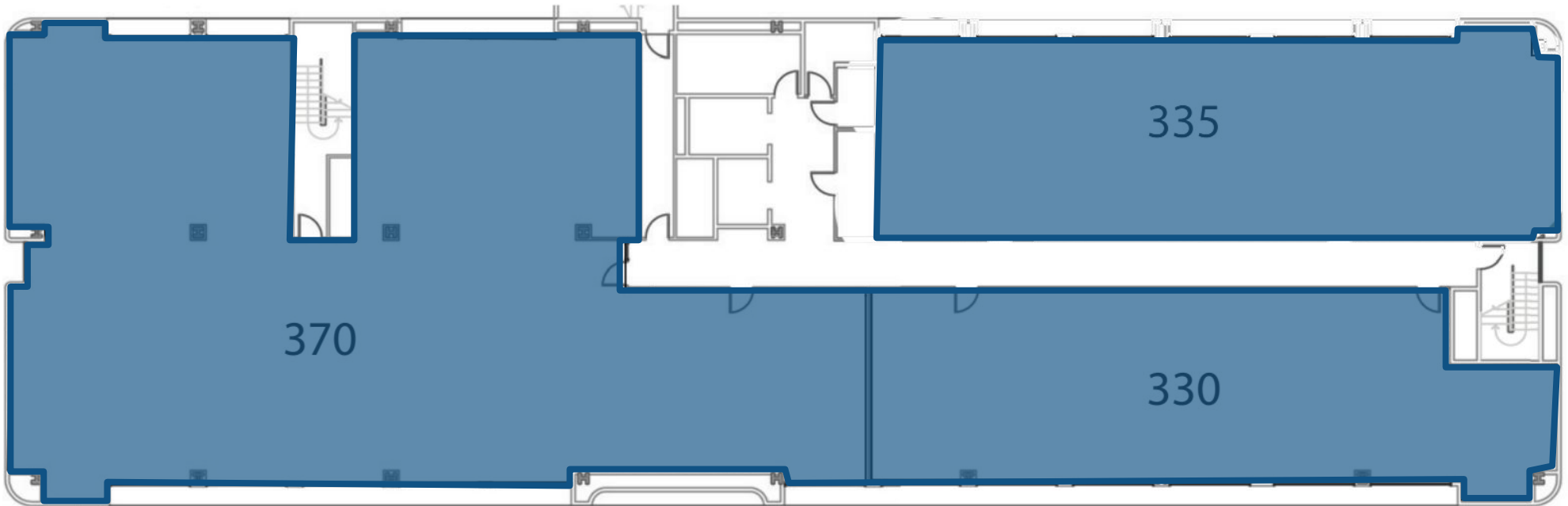
SUITE 235	3,269 SF
-----------	----------



# THIRD FLOOR

## AVAILABLE SUITES

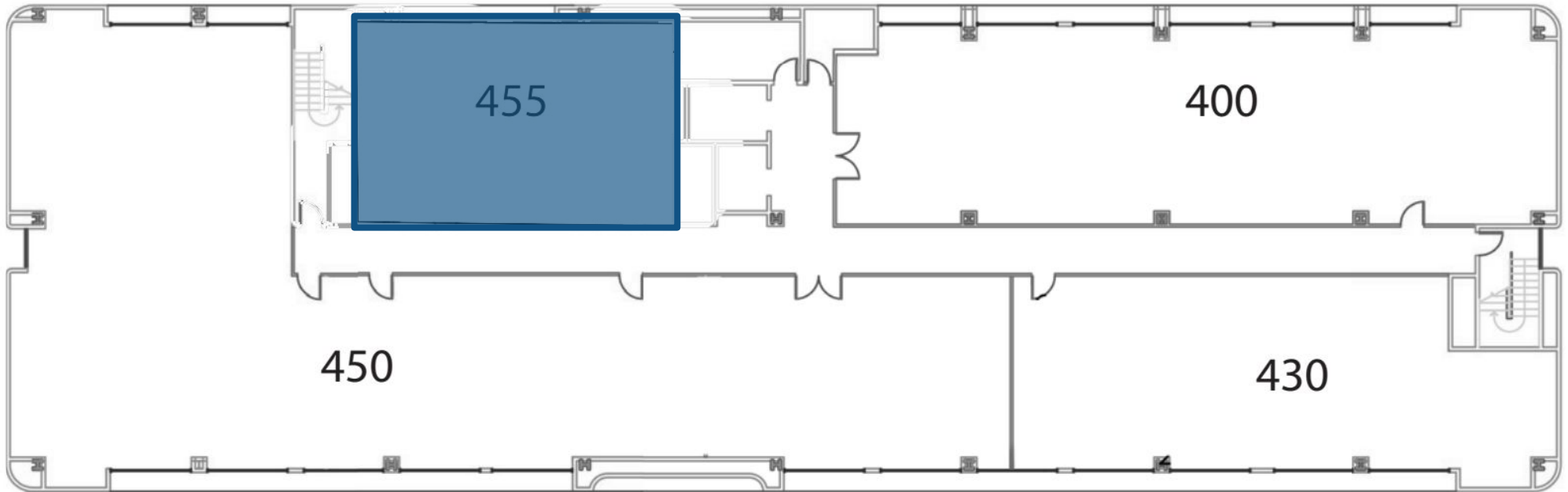
SUITE 335	2,456 SF
SUITES 330/370	7,836 SF



# FOURTH FLOOR

## AVAILABLE SUITES

SUITE 455	1,148 SF
-----------	----------



# HOSPITAL SERVICES



## Behavioral Health

### Cardiovascular

- Chest Pain Center
- Angioplasty
- Cardiac catheterization
- Pacemaker/defibrillator implants
- Bi-ventricular implants
- Peripheral vascular interventions
- Cardiovascular surgery
- Intravascular Ultrasound

### Diabetes Treatment Center

- Inpatient care

### Dialysis

- Inpatient care

### Emergency Services

- Urgent and emergency care 24/7
- Advanced primary stroke center

### Endoscopic Procedures

### Laboratory Services

### Oncology

- Adult inpatient care
- Oncology Surgery

### Orthopedics

### Radiology

- Angiography
- CT scan
- MRI
- Nuclear Medicine
- X-ray

## Rehabilitation

- Inpatient Physical Therapy
- Speech Therapy
- Occupational Therapy
- Short-term inpatient rehabilitation unit

## Respiratory Services

### Surgery

- Inpatient
- Outpatient
- Robotic

### Wound Care

- Inpatient care
- Outpatient care
- Hyperbaric medicine

**MIKE TYMCZYN**

VICE PRESIDENT  
702.216.2371 **DIRECT**  
miket@dcghealthcare.com  
BS.0147041



**HEALTHCARE**

