



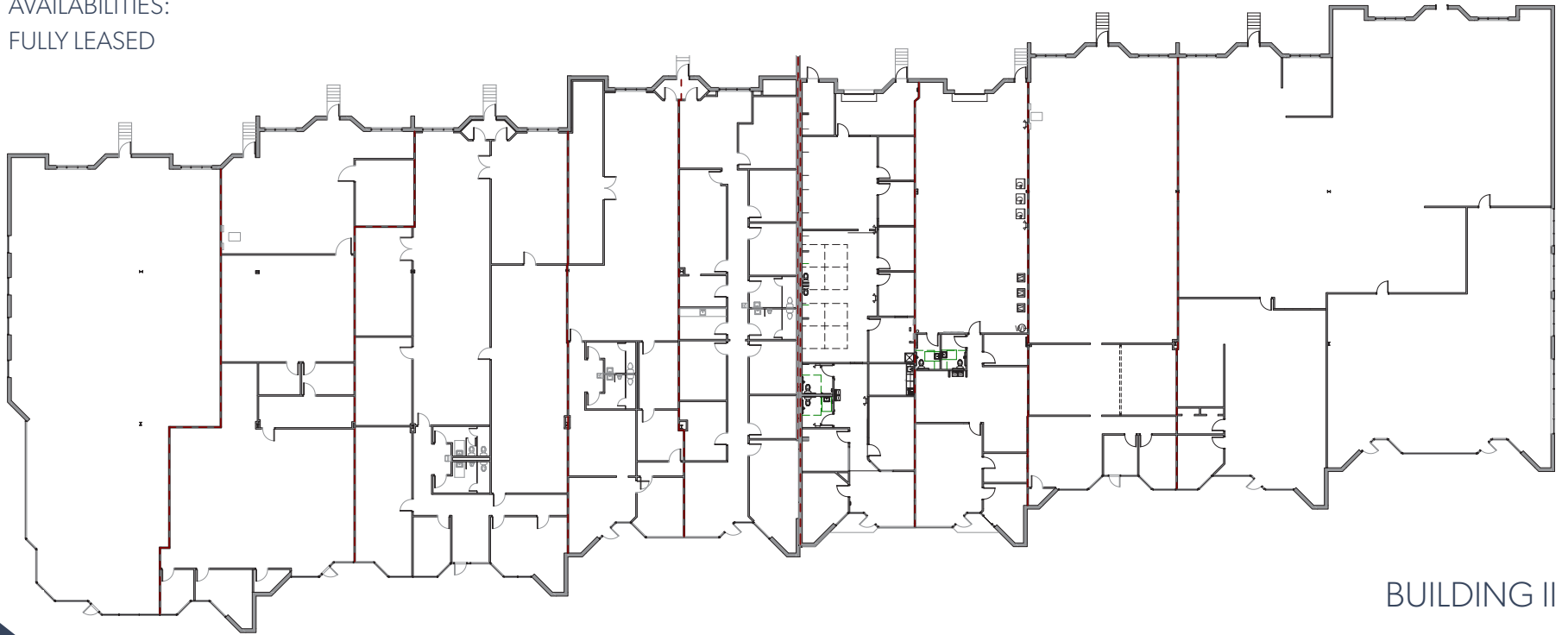
PATEWOOD BUSINESS CENTER
1 MARCUS DRIVE
SUBURBAN OFFICE SPACE FOR LEASE

SITE #1467 | GREENVILLE, SC 29615

SPACE OPPORTUNITIES

BUILDING I

AVAILABILITIES:
FULLY LEASED



BUILDING II

AVAILABILITIES:
FULLY LEASED

BUILDING III

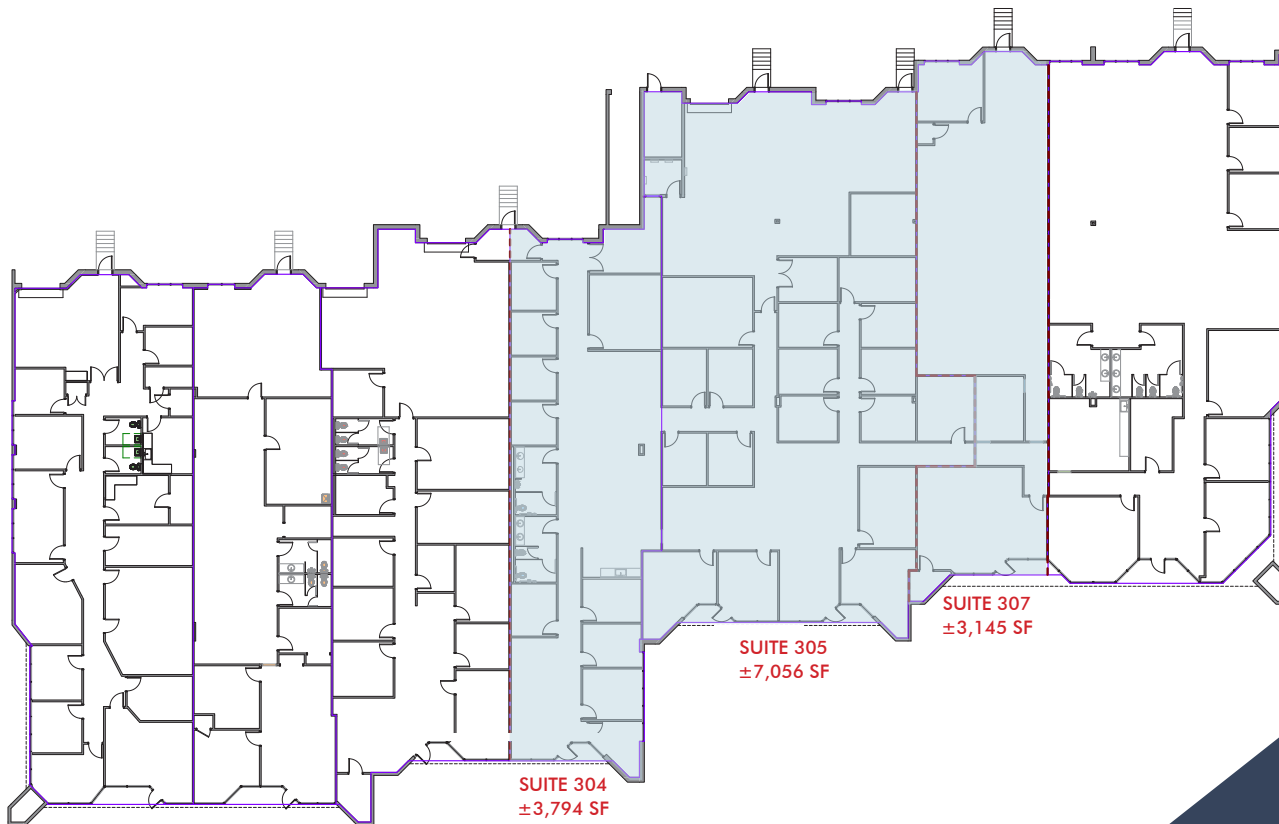
AVAILABILITIES:

SUITE 304 | ±3,794 SF

SUITE 305 | ±7,056 SF

SUITE 307 | ±3,145 SF

(CAN BE COMBINED)

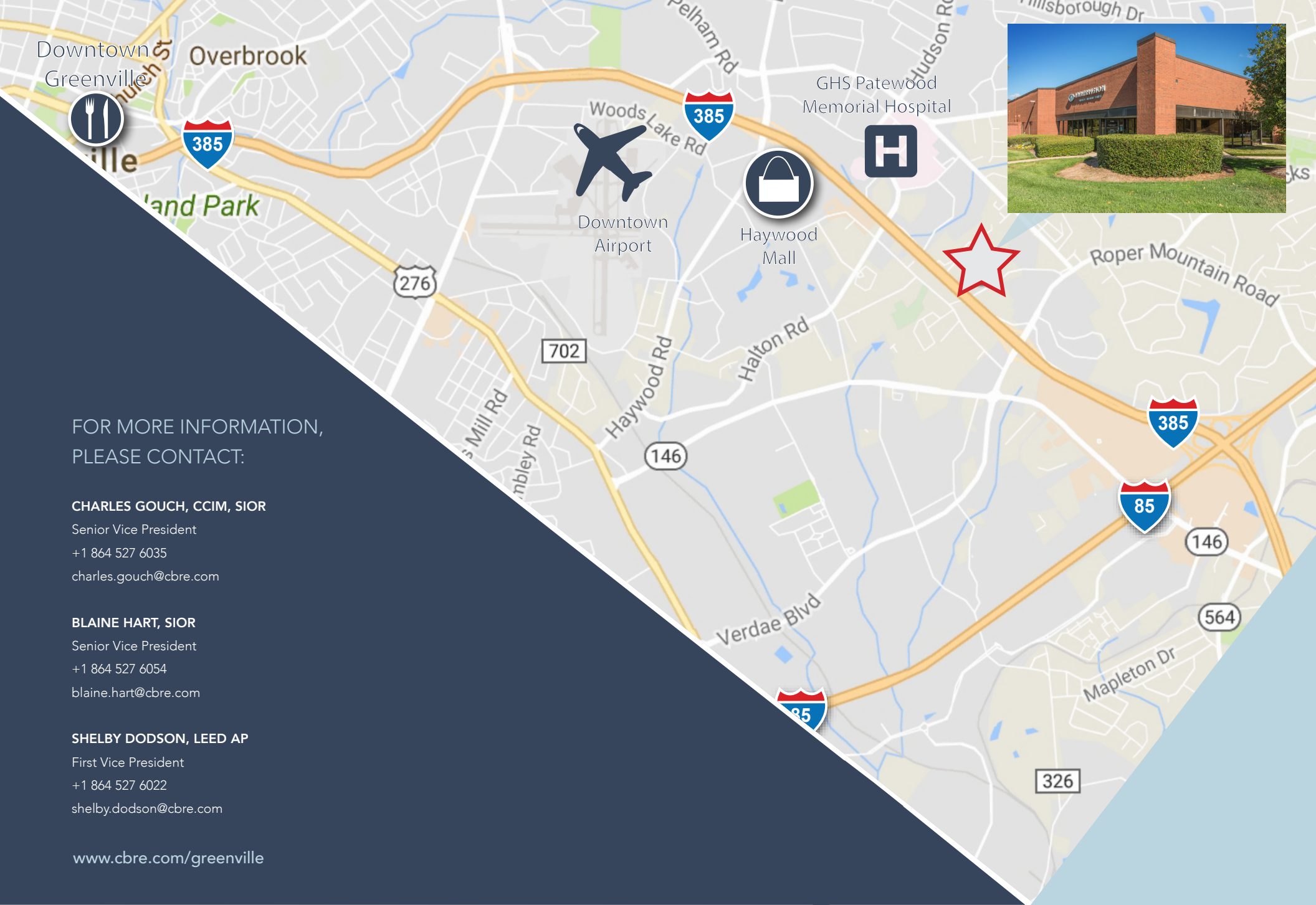


PROPERTY DETAILS

SUBURBAN OFFICE FOR LEASE

1 Marcus Drive is conveniently located off of Frontage Road in close proximity to Haywood Road with easy access to I-385 and I-85. The property is also a short drive to Downtown Greenville.

+ Total RSF Available:	Up to ±13,995 SF
- Building I:	Fully Leased
- Building II:	Fully Leased
- Building III:	±13,995 RSF
- Building IV:	Fully Leased
+ Parking:	Ample on-site
+ Lease Rate:	\$14.50/SF NNN Office



Downtown Greenville Overbrook



Downtown Airport

Haywood Mall

GHS Patewood Memorial Hospital



Roper Mountain Road



FOR MORE INFORMATION,
PLEASE CONTACT:

CHARLES GOUCH, CCIM, SIOR

Senior Vice President
+1 864 527 6035
charles.gouch@cbre.com

BLAINE HART, SIOR

Senior Vice President
+1 864 527 6054
blaine.hart@cbre.com

SHELBY DODSON, LEED AP

First Vice President
+1 864 527 6022
shelby.dodson@cbre.com

www.cbre.com/greenville