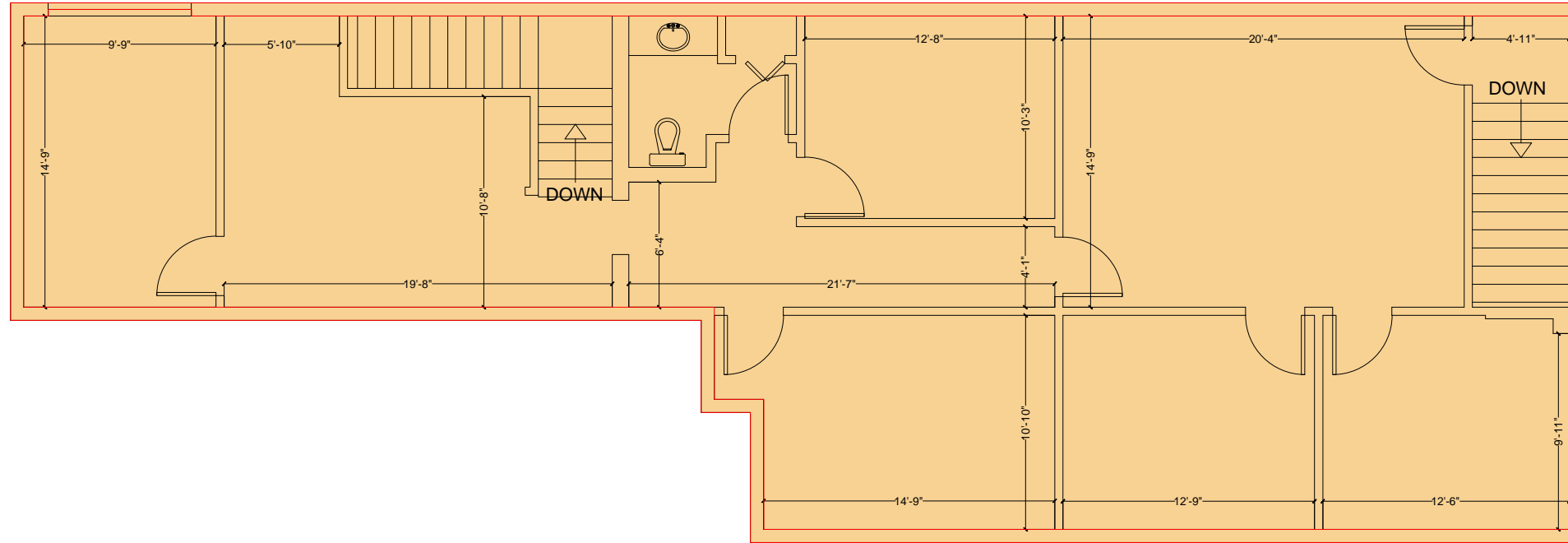


3638 West Cypress Street
Tampa, Florida, 33607



SECOND FLOOR PLAN

SCALE: 1/8" = 1'-0"

ANSI/BOMA Z65.2-2009 Exterior Wall Methodology

-Exterior Gross Area - 1,767 Square Feet

PROJECT NUMBER:	AQR-005
DRAWN BY:	DB
CHECKED BY:	DEA
DATE:	4/12/2017
SCALE:	1/8"=1'-0"

SHEET TITLE	SECOND FLOOR PLAN
SHEET NUMBER:	A1.2