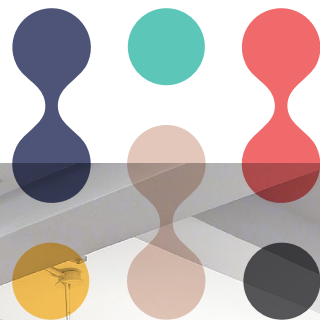


220 W 19 Street Chelsea | NYC



AVISON
YOUNG



220 West 19th Street is a boutique, 12-story office building in the heart of Chelsea. Built in 1910, it is owned and occupied by Red Circle, the parent company of Diesel. Known as the Diesel HQ for North American operations, it has also housed other renowned fashion brands like Maison Margiela.

The well-maintained building recently underwent capital improvements to the façade, lobby, turnstiles, and elevator system. It offers quick access to attractions like the Highline, Chelsea Market, and Union Square Park, as well as amenities such as fitness centers, fine dining, shopping, cafés, and nightlife.

Easily accessible, the property is walking distance from 9 major subway lines (**1 2 3 A C E F M** and **L**), the PATH, and is surrounded by Citi Bike stations, ensuring an easy commute to and from all areas of Manhattan.

Building Highlights

- Owner occupied
- Recent capital improvements include facade, lobby renovations, and elevator systems
- 24/7 attended lobby
- 12' slab-to-slab heights with large operable windows to allow plenty of natural light
- Crunch Fitness at the base offering tenant promotions







Current Availabilities

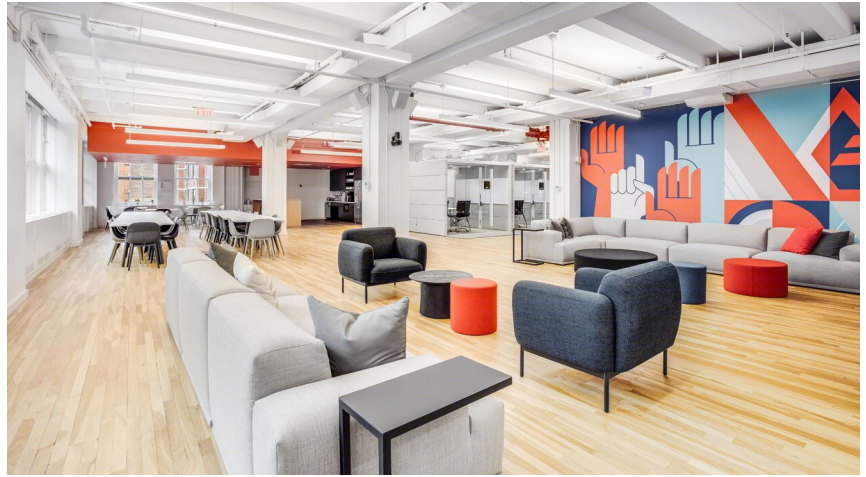
Entire 3rd Floor	9,477 RSF
Entire 4th Floor	9,485 RSF
Entire 10th Floor (divisible)	9,308 RSF
Entire 11th Floor (divisible)	9,206 RSF

Possession

Entire 3rd Floor	Immediate
Entire 4th Floor	Immediate
Entire 10th Floor	January 1, 2026
Entire 11th Floor	January 1, 2026

Term

Entire 3rd Floor	5-10 Years
Entire 4th Floor	5-10 Years
Entire 10th Floor	Negotiable
Entire 11th Floor	Negotiable

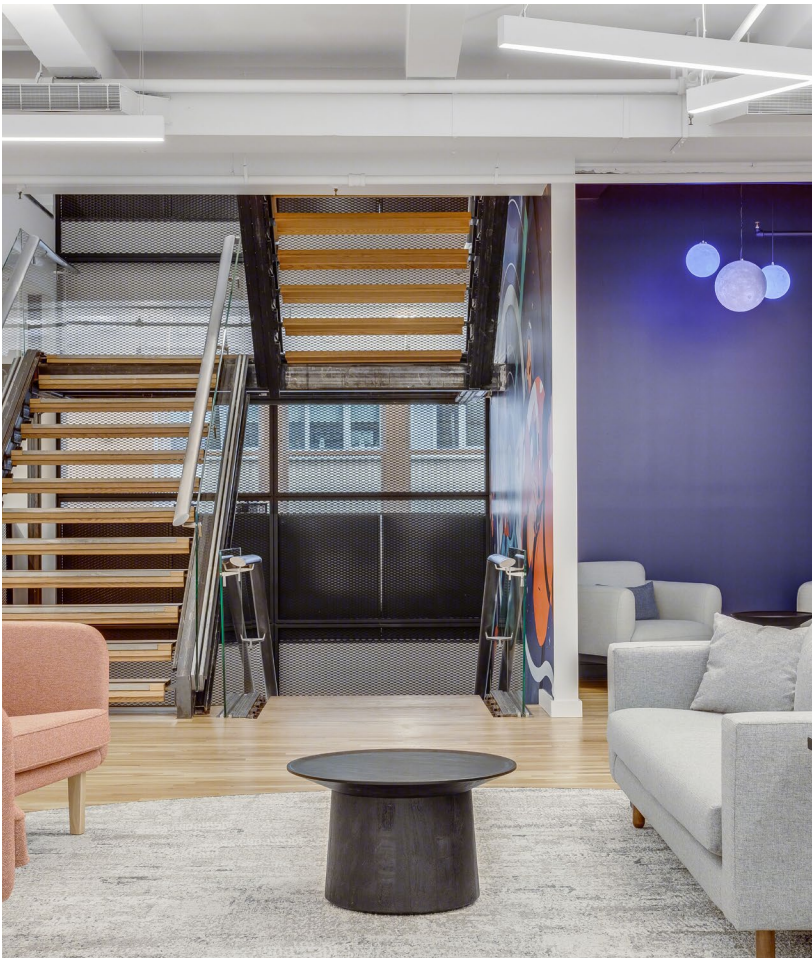


Floors 3 and 4

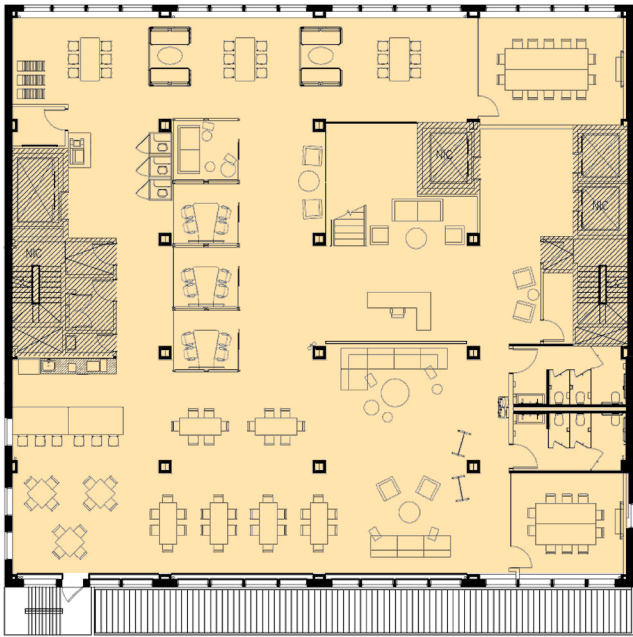
- Fully built out, move-in ready space on two contiguous floors with existing staircase for a total of 18,962 RSF
- Ability to lease floors individually
- High-end furniture can be included
- Multiple conference rooms and open collaboration areas

Floors 10 and 11

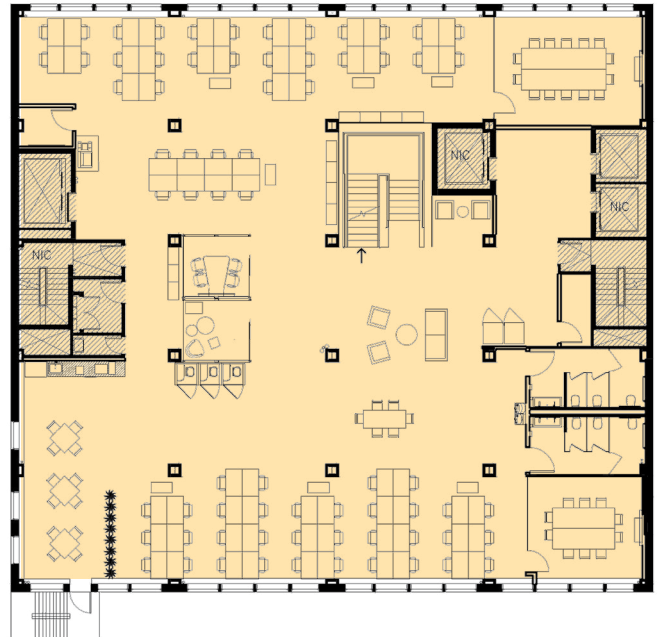
- Floors feature existing showroom space
- Landlord will provide new building installation
- High ceilings, an abundance of natural light from oversized windows, along with panoramic views including Hudson Yards and Midtown



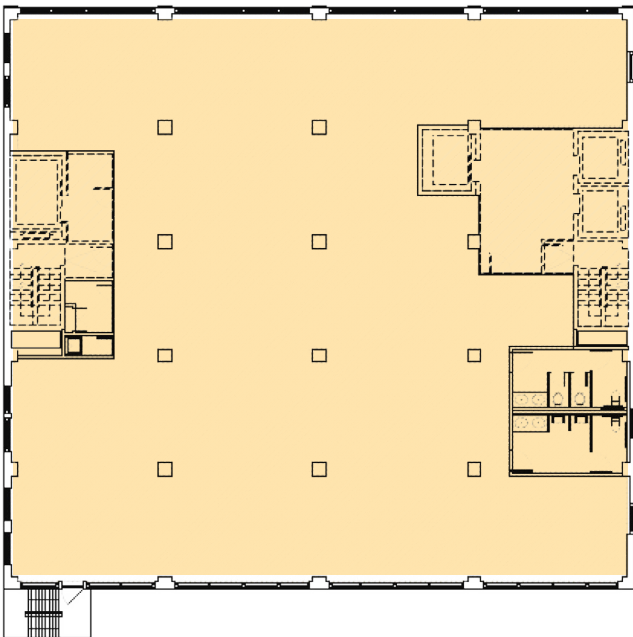
3rd Floor



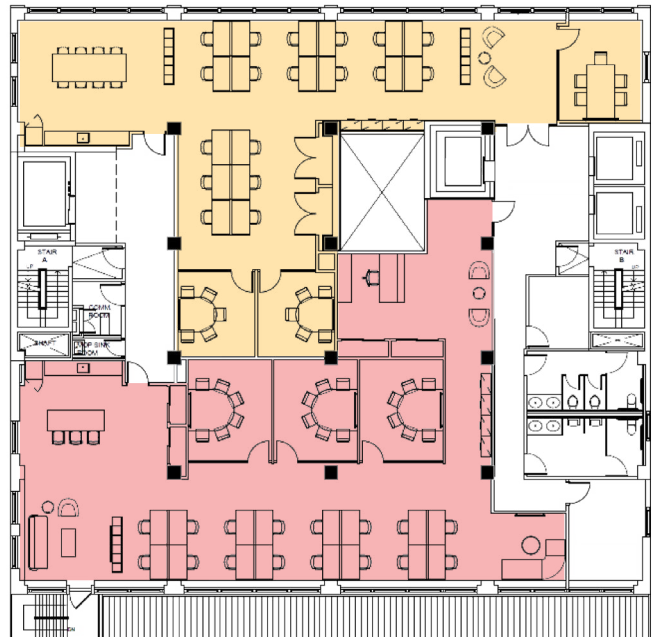
4th Floor

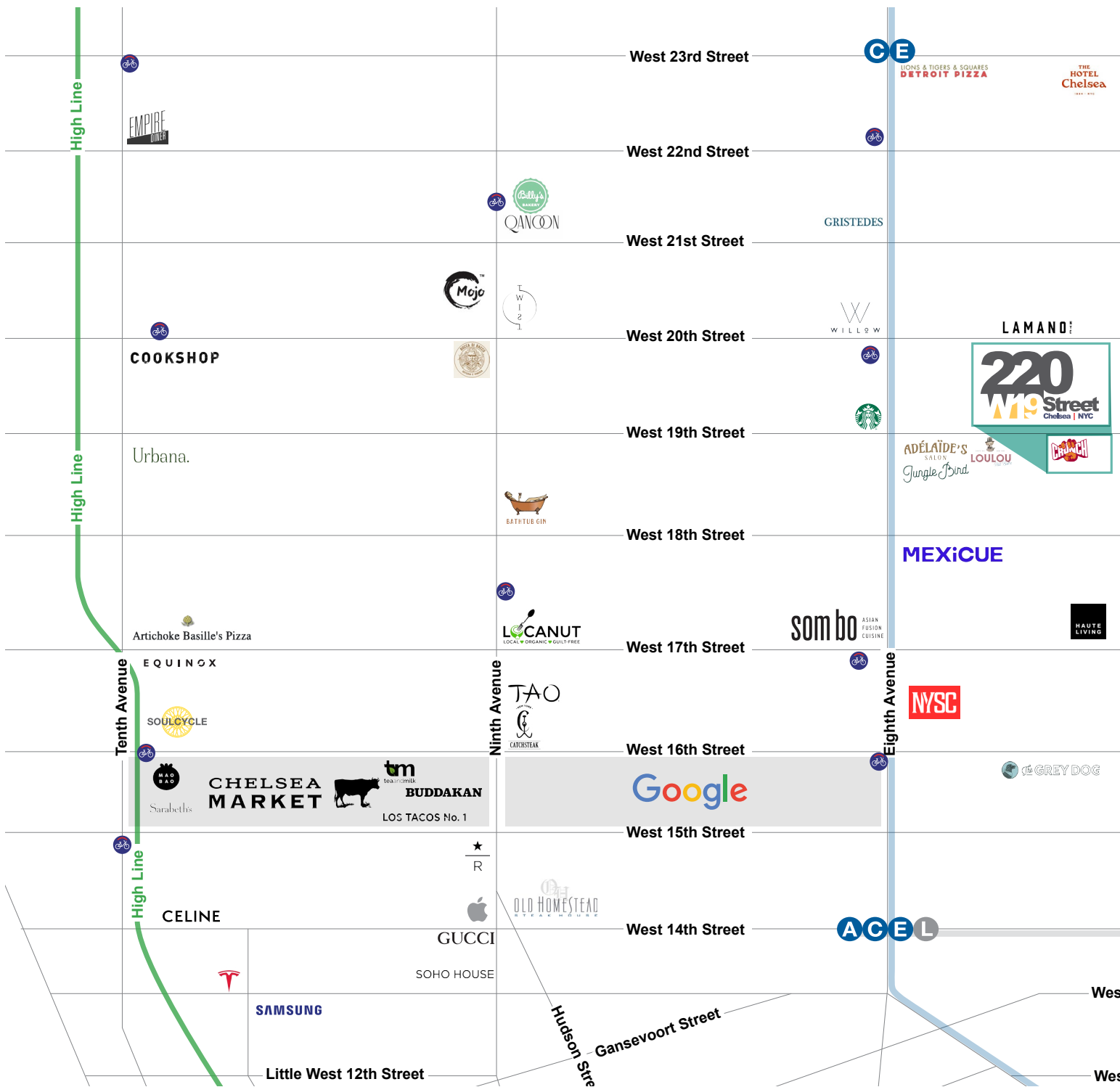


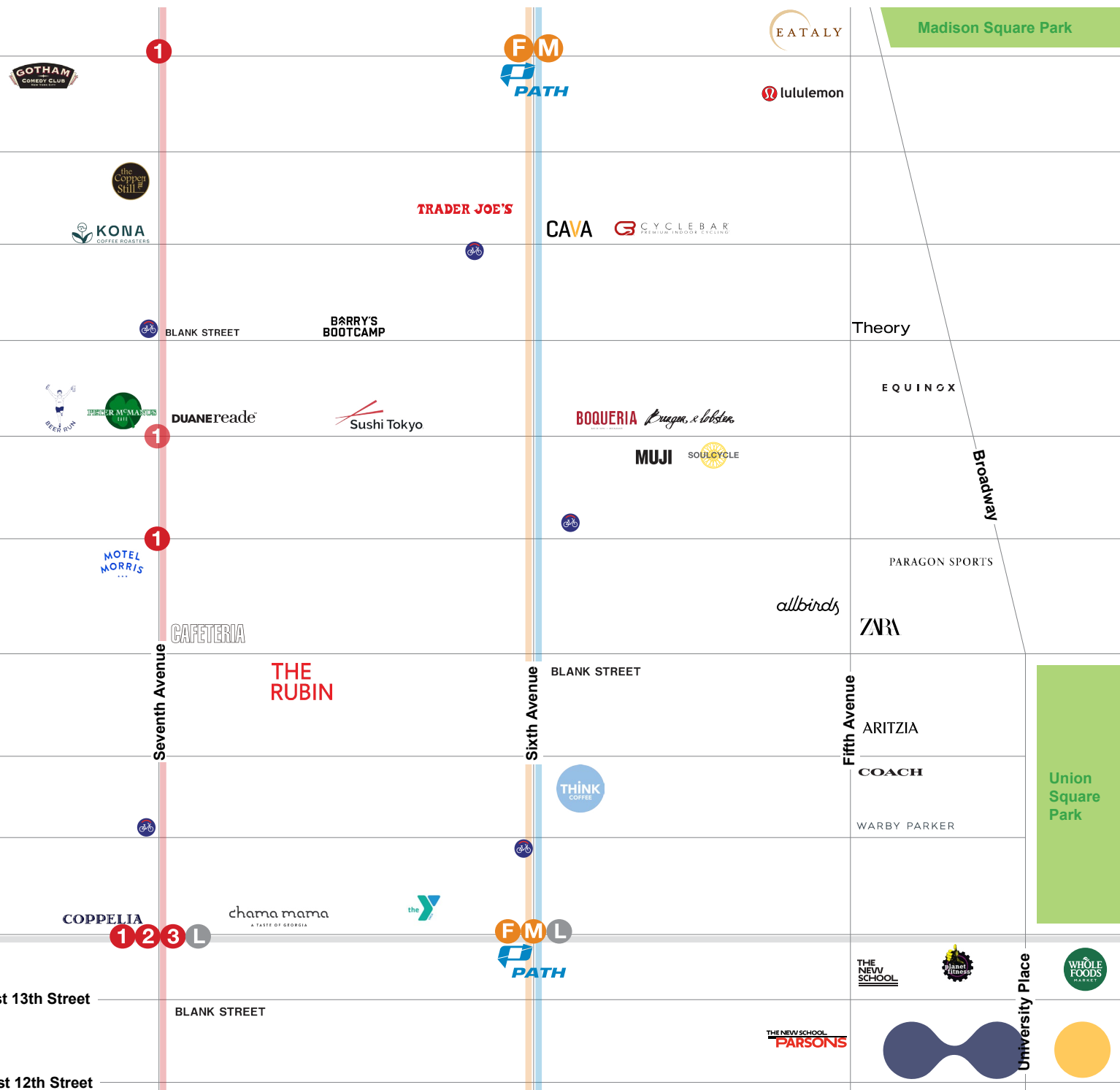
10th/11th Floors - Core and Shell



10th/11th Floors - Possible Division









For more information, please contact exclusive leasing agents:

Patrick Steffens

Senior Director
212 729 7945
patrick.steffens@avisonyoung.com

Story Langston

Senior Associate
212 729 4814
story.langston@avisonyoung.com

Joel Wechsler

Senior Director
212 729 1906
joel.wechsler@avisonyoung.com

Michael Gottlieb

Principal
212 729 6809
michael.gottlieb@avisonyoung.com



**AVISON
YOUNG**

Avison Young | 530 5th Avenue, Floor 4 | New York, NY 10036 | T 212 729 7140 | F 917 591 9300 | avisonyoung.com

© 2025 Avison Young. This information has been obtained from sources believed reliable. We have not verified it and make no guarantee, warranty or representation about it. Any projections, opinions, assumptions or estimates used are for example only and do not represent the current or future performance of the property. You and your advisors should conduct a careful, independent investigation of the property to determine to your satisfaction the suitability of the property for your needs.