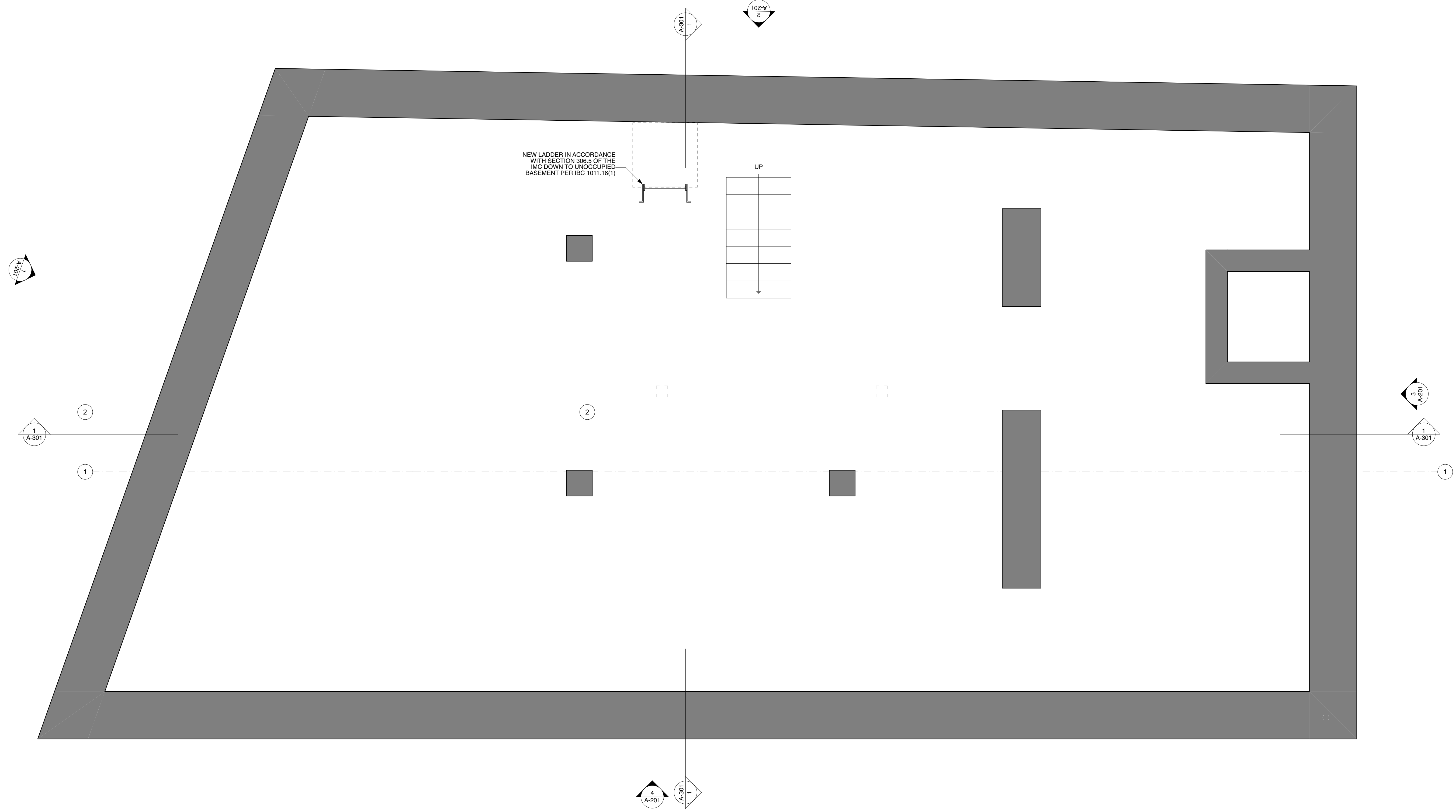
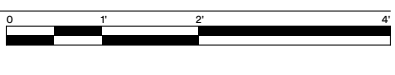


FLOOR PLAN GENERAL NOTES

1. These Drawings constitute a design progress set. Additional information, dimensions and specifications will be provided by the Architect and/or Owner at a later date or as requested with estimate for clarification.
 2. Dimensions: All dimensions are from face of core structure material for all new construction elements, UNO. All dimensions referencing existing elements are from finished face, UNO.
 3. Project Specifications: Refer to sheets G-002 and G-003 for project specifications, where discrepancies exist between specifications and Drawings, consult with Architect for clarification.
 4. Walls/Floors: See wall and floor type assemblies on A-601.
 5. MEP: Mechanical, Electrical and Plumbing work is to be design build by the Contractor. The Architect has provided design-build performance specifications and has made basic assumptions for size and space requirements and locations for incoming service. Contractor is to review and bring to the Architect's attention if additional information is required.
- Deferred Submittal:
At the time of the submission of this permit set the mechanical, plumbing, electrical engineering design drawings are in progress and request a deferred submittal per IBC 2015 107.3.4. Refer to Architect's Statement of Deferred Submittals under separate cover.
6. Automatic Sprinkler System: New NFPA 13 sprinkler system is design-build by the sprinkler subcontractor in accordance with local building code. See RCP and specifications for additional notes regarding design intent.
 7. Life Safety Devices: Fire alarms systems, emergency lighting, smoke detection, etc are design-build by the fire alarm subcontractor, refer to Life Safety sheets, locations TBD, quantities by Contractor.
 8. Finishes: TBD, Forthcoming.
 9. Appliances: All appliances are to be Owner-Furnished, Contractor installed.



1 BASEMENT PLAN
SCALE: 1/2" = 1'-0"



ISSUE NO.	DATE	DESCRIPTION
1	5/24/24	ISSUE FOR PERMIT SET

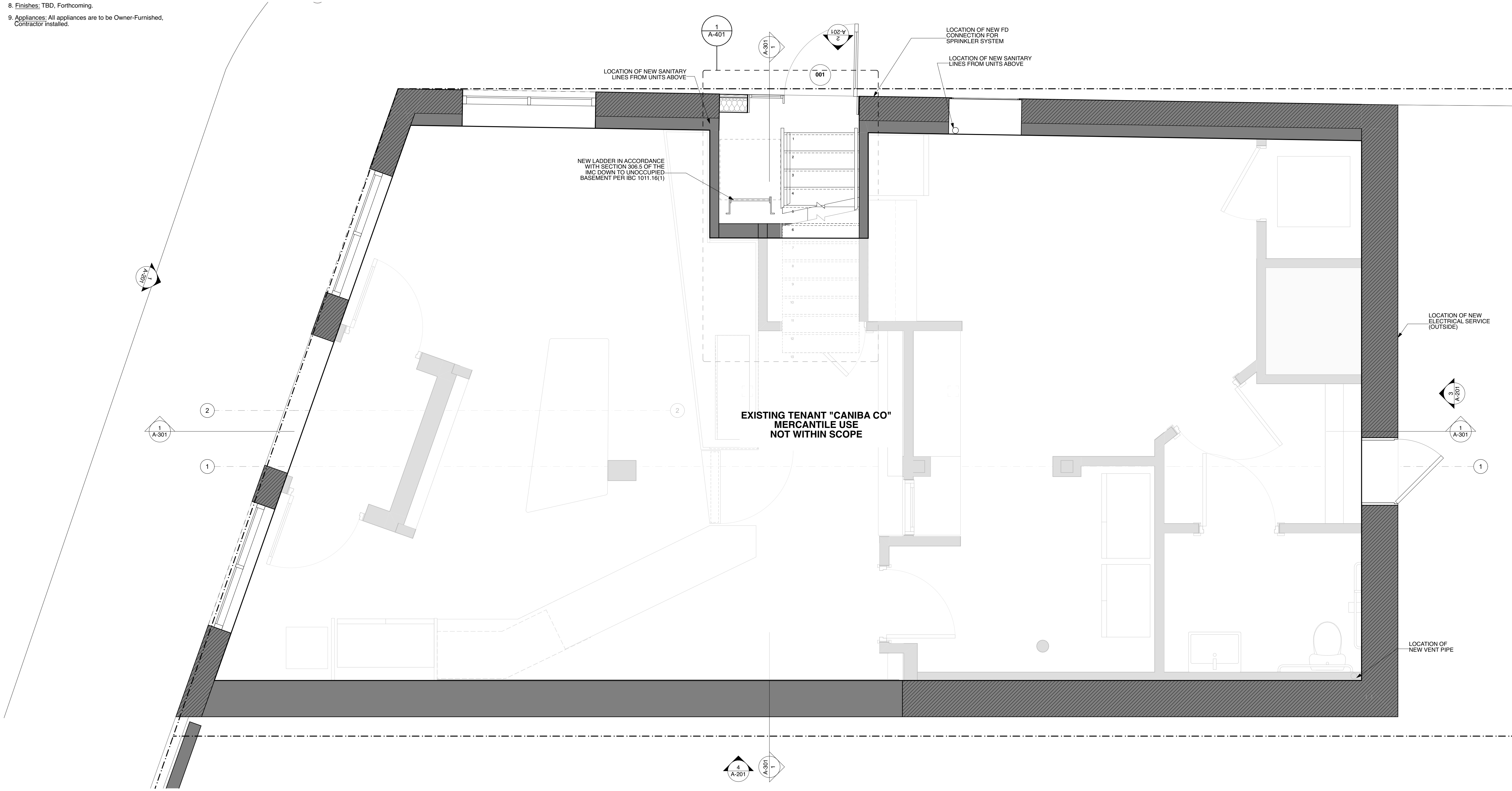
ISSUE NUMBER	DATE	DESCRIPTION
1	5/24/24	ISSUE FOR PERMIT SET

CHANGES THIS ISSUE:	ISSUE NUMBER	DATE	DESCRIPTION

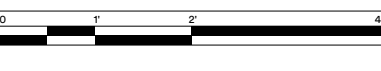
PRELIMINARY
NOT FOR CONSTRUCTION

FLOOR PLAN GENERAL NOTES

1. These Drawings constitute a design progress set. Additional information, dimensions and specifications will be provided by the Architect and/or Owner at a later date or as requested with estimate for clarification.
 2. Dimensions: All dimensions are from face of core structure material for all new construction elements, UNO. All dimensions referencing existing elements are from finished face, UNO.
 3. Project Specifications: Refer to sheets G-002 and G-003 for project specifications, where discrepancies exist between specifications and Drawings, consult with Architect for clarification.
 4. Walls/Floors: See wall and floor type assemblies on A-601.
 5. MEP: Mechanical, Electrical and Plumbing work is to be design build by the Contractor. The Architect has provided design-build performance specifications and has made basic assumptions for size and space requirements and locations for incoming service. Contractor is to review and bring to the Architect's attention if additional information is required.
- Deferred Submittal:
At the time of the submission of this permit set the mechanical, plumbing, electrical engineering design drawings are in progress and request a deferred submittal per IBC 2015 107.3.4. Refer to Architect's Statement of Deferred Submittals under separate cover.
6. Automatic Sprinkler System: New NFPA 13 sprinkler system is design-build by the sprinkler subcontractor in accordance with local building code. See RCP and specifications for additional notes regarding design intent.
 7. Life Safety Devices: Fire alarms systems, emergency lighting, smoke detection, etc are design-build by the fire alarm subcontractor, refer to Life Safety sheets, locations TBD, quantities by Contractor.
 8. Finishes: TBD, Forthcoming.
 9. Appliances: All appliances are to be Owner-Furnished, Contractor installed.



1 1ST FLOOR PLAN
SCALE: 1/2" = 1'-0"



PRELIMINARY
NOT FOR CONSTRUCTION

CHANGES THIS ISSUE:	ID	DESCRIPTION

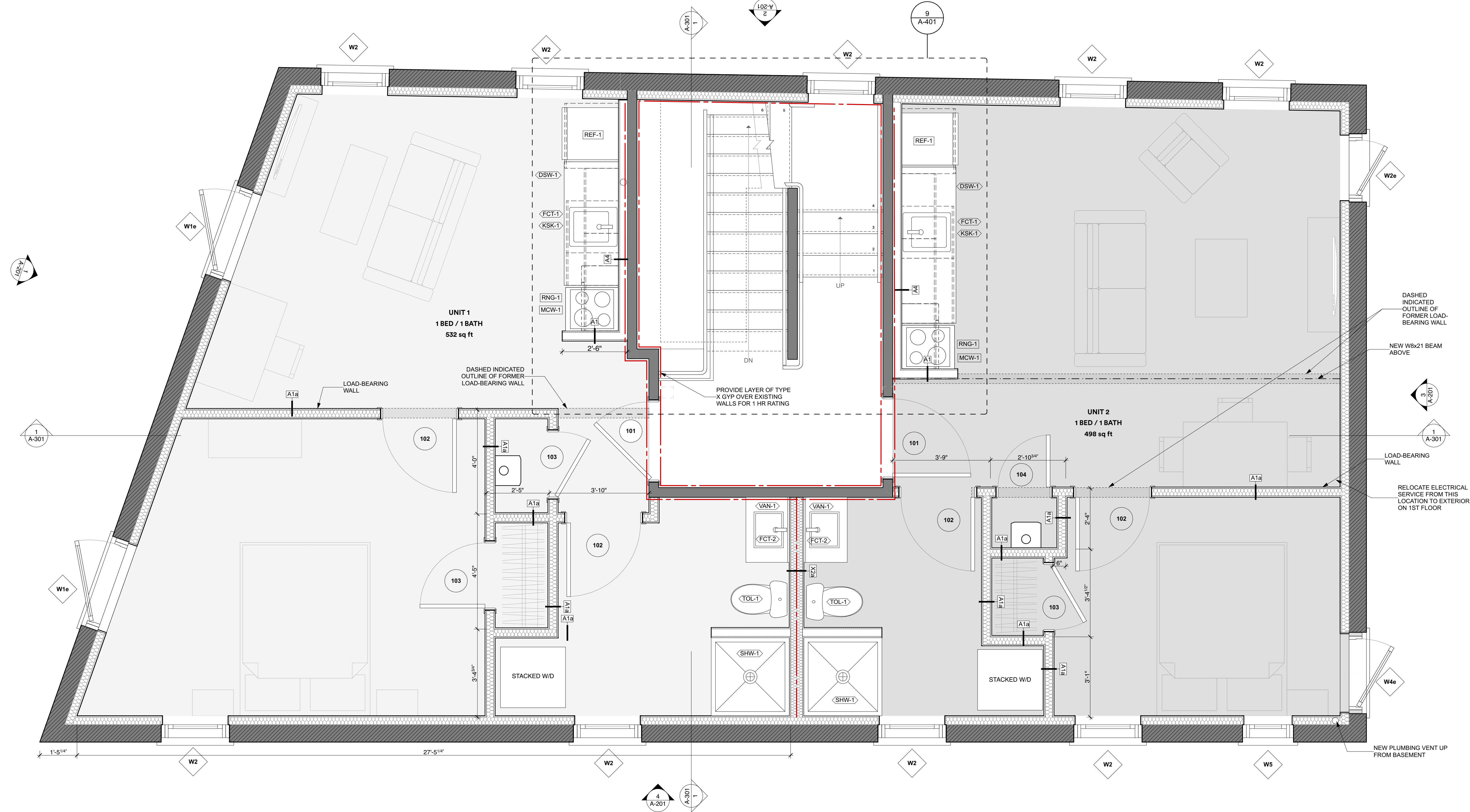
SUBMISSIONS:		DATE	DESCRIPTION	ISSUE NUMBER
ISSUE	DATE	ISSUE	DESCRIPTION	ISSUE NUMBER
01	10/2/21	10/2/21	SITE PLAN REVIEW	001
02	10/15/21	10/15/21	MECHANICAL PERMIT SET	002

CJS PROJECT LEAD:		DATE OF ISSUE:	PROJECT STATUS:
JJ	5/24/24	5/24/24	SITE PLAN REVIEW

94 PORTLAND STREET
RESIDENCES
94 Portland Street Portland ME 04101

FLOOR PLAN GENERAL NOTES

1. These Drawings constitute a design progress set. Additional information, dimensions and specifications will be provided by the Architect and/or Owner at a later date or as requested with estimate for clarification.
 2. Dimensions: All dimensions are from face of core structure material for all new construction elements, UNO. All dimensions referencing existing elements are from finished face, UNO.
 3. Project Specifications: Refer to sheets G-002 and G-003 for project specifications, where discrepancies exist between specifications and Drawings, consult with Architect for clarification.
 4. Walls/Floors: See wall and floor type assemblies on A-601.
 5. MEP: Mechanical, Electrical and Plumbing work is to be design build by the Contractor. The Architect has provided design-build performance specifications and has made basic assumptions for size and space requirements and locations for incoming service. Contractor is to review and bring to the Architect's attention if additional information is required.
- Deferred Submittal:
At the time of the submission of this permit set the mechanical, plumbing, electrical engineering design drawings are in progress and request a deferred submittal per IBC 2015 107.3.4. Refer to Architect's Statement of Deferred Submittals under separate cover.
6. Automatic Sprinkler System: New NFPA 13 sprinkler system is design-build by the sprinkler subcontractor in accordance with local building code. See RCP and specifications for additional notes regarding design intent.
 7. Life Safety Devices: Fire alarms systems, emergency lighting, smoke detection, etc are design-build by the fire alarm subcontractor, refer to Life Safety sheets, locations TBD, quantities by Contractor.
 8. Finishes: TBD, Forthcoming.
 9. Appliances: All appliances are to be Owner-Furnished, Contractor installed.



1 2ND FLOOR PLAN
SCALE: 1/2" = 1'-0"

PRELIMINARY
NOT FOR CONSTRUCTION

CHANGES THIS ISSUE:	
ID	DESCRIPTION

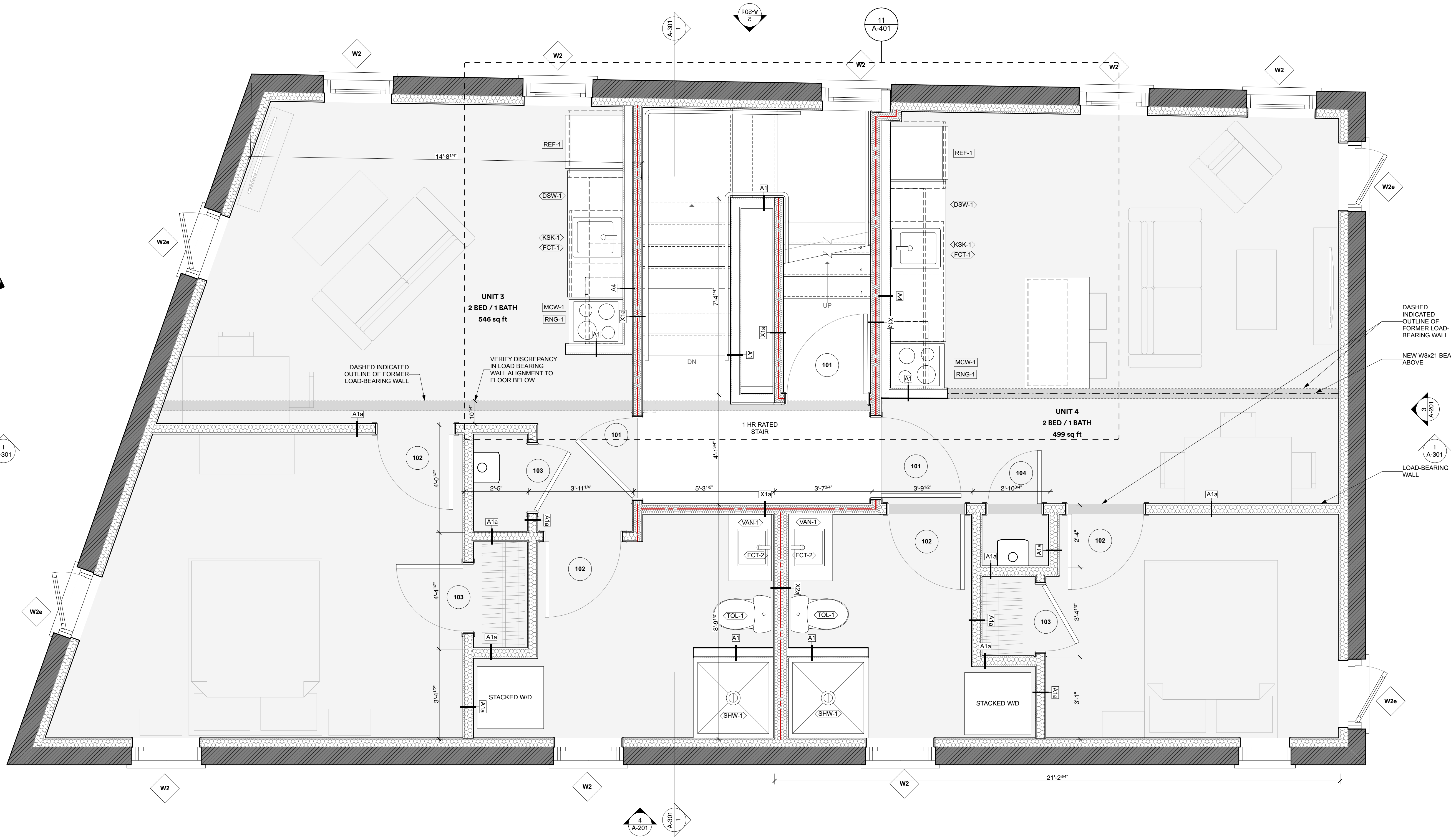
SUBMISSIONS:	
ISSUE	DATE
1	10/23/21
2	11/09/21
3	11/16/21
4	11/16/21
5	11/16/21
6	11/16/21
7	11/16/21
8	11/16/21
9	11/16/21
10	11/16/21
11	11/16/21
12	11/16/21
13	11/16/21
14	11/16/21
15	11/16/21
16	11/16/21
17	11/16/21
18	11/16/21
19	11/16/21
20	11/16/21

CJS PROJECT LEAD:	
ISSUE	DATE OF ISSUE:
1	5/24/24
2	5/24/24
3	5/24/24
4	5/24/24
5	5/24/24
6	5/24/24
7	5/24/24
8	5/24/24
9	5/24/24
10	5/24/24
11	5/24/24
12	5/24/24
13	5/24/24
14	5/24/24
15	5/24/24
16	5/24/24
17	5/24/24
18	5/24/24
19	5/24/24
20	5/24/24

94 PORTLAND STREET
RESIDENCES
94 Portland Street Portland ME 04101

FLOOR PLAN GENERAL NOTES

- These Drawings constitute a design progress set. Additional information, dimensions and specifications will be provided by the Architect and/or Owner at a later date or as requested with estimate for clarification.
 - Dimensions: All dimensions are from face of core structure material for all new construction elements, UNO. All dimensions referencing existing elements are from finished face, UNO.
 - Project Specifications: Refer to sheets G-002 and G-003 for project specifications, where discrepancies exist between specifications and Drawings, consult with Architect for clarification.
 - Walls/Floors: See wall and floor type assemblies on A-601.
 - MEP: Mechanical, Electrical and Plumbing work is to be design build by the Contractor. The Architect has provided design-build performance specifications and has made basic assumptions for size and space requirements and locations for incoming service. Contractor is to review and bring to the Architect's attention if additional information is required.
- Deferred Submittal:
At the time of the submission of this permit set the mechanical, plumbing, electrical engineering design drawings are in progress and request a deferred submittal per IBC 2015 107.3.4. Refer to Architect's Statement of Deferred Submittals under separate cover.
- Automatic Sprinkler System: New NFPA 13 sprinkler system is design-build by the sprinkler subcontractor in accordance with local building code. See RCP and specifications for additional notes regarding design intent.
 - Life Safety Devices: Fire alarms systems, emergency lighting, smoke detection, etc are design-build by the fire alarm subcontractor, refer to Life Safety sheets, locations TBD, quantities by Contractor.
 - Finishes: TBD, Forthcoming.
 - Appliances: All appliances are to be Owner-Furnished, Contractor installed.



1 3RD FLOOR PLAN
SCALE: 1/2" = 1'-0"

PRELIMINARY
NOT FOR CONSTRUCTION

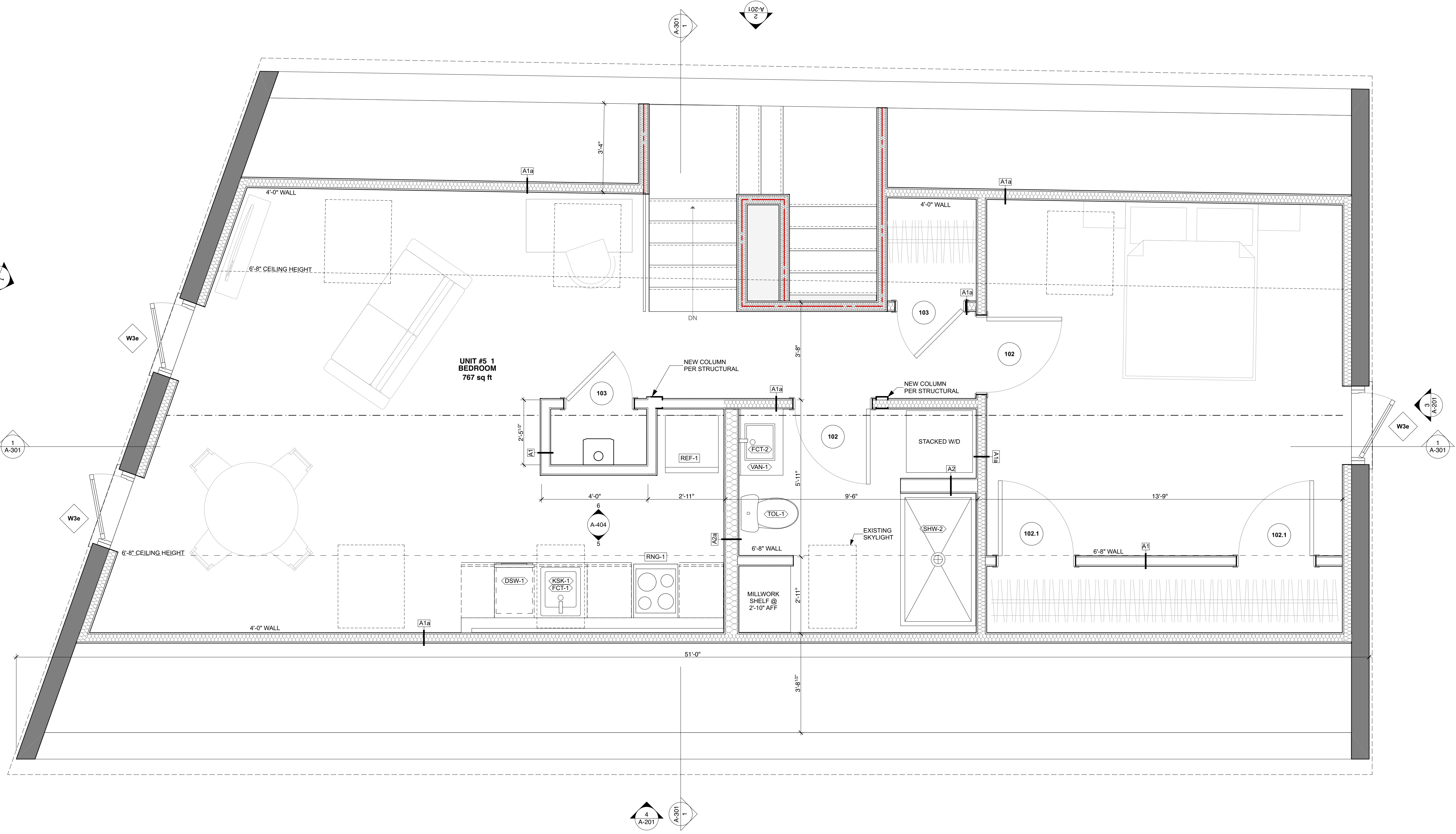
ISSUE NUMBER	ISSUE DATE	DESCRIPTION
1	5/24/24	ISSUE FOR PERMIT SET

ISSUE	DATE	DESCRIPTION
1	5/24/24	ISSUE FOR PERMIT SET

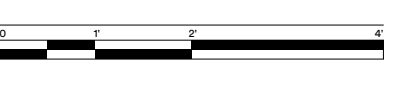
94 PORTLAND STREET
RESIDENCES
94 Portland Street Portland ME 04101

FLOOR PLAN GENERAL NOTES

- These Drawings constitute a design progress set. Additional information, dimensions and specifications will be provided by the Architect and/or Owner at a later date or as requested with estimate for clarification.
 - Dimensions: All dimensions are from face of core structure material for all new construction elements, UNO. All dimensions referencing existing elements are from finished face, UNO.
 - Project Specifications: Refer to sheets G-002 and G-003 for project specifications, where discrepancies exist between specifications and Drawings, consult with Architect for clarification.
 - Walls/Floors: See wall and floor type assemblies on A-601.
 - MEP: Mechanical, Electrical and Plumbing work is to be design build by the Contractor. The Architect has provided design-build performance specifications and has made basic assumptions for size and space requirements and locations for incoming service. Contractor is to review and bring to the Architect's attention if additional information is required.
- Deferred Submittal:
At the time of the submission of this permit set the mechanical, plumbing, electrical engineering design drawings are in progress and request a deferred submittal per IBC 2015 107.3.4. Refer to Architect's Statement of Deferred Submittals under separate cover.
- Automatic Sprinkler System: New NFPA 13 sprinkler system is design-build by the sprinkler subcontractor in accordance with local building code. See RCP and specifications for additional notes regarding design intent.
 - Life Safety Devices: Fire alarms systems, emergency lighting, smoke detection, etc are design-build by the fire alarm subcontractor, refer to Life Safety sheets, locations TBD, quantities by Contractor.
 - Finishes: TBD, Forthcoming.
 - Appliances: All appliances are to be Owner-Furnished, Contractor installed.



2 4TH FLOOR PLAN
SCALE: 1/2" = 1'-0"



PRELIMINARY
NOT FOR CONSTRUCTION

SUBMISSIONS:		CHANGES THIS ISSUE:	
ISSUE	DATE	ID	DESCRIPTION
01	10/2/21		
02 - WIP	Work in Progress		

CJS PROJECT LEAD:	
JJ	DATE OF ISSUE:
	5/24/24

94 PORTLAND STREET
RESIDENCES
94 Portland Street Portland ME 04101