



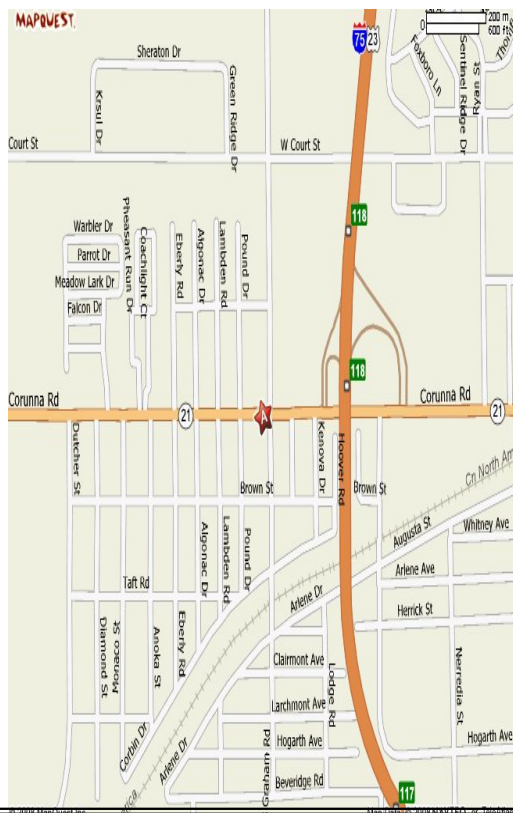
MDI Real Estate Services

P. O. Box 310289  
Flint, Michigan 48531

# AVAILABLE



## 4021 Corunna Road Flint, MI



**Property Name:** Corunna Rd. Vacant Land

**Property Type:** Commercial

**Price:** \$495,000.00

**Zoning:** B-3

**Total Sq Ft of Property** Approx 63,000 S.F.  
approx 150x420 S.F

**Traffic Counts**

**Year: 2007 Corunna Rd** 28,000

**Year: 2007 I-75** 80,000

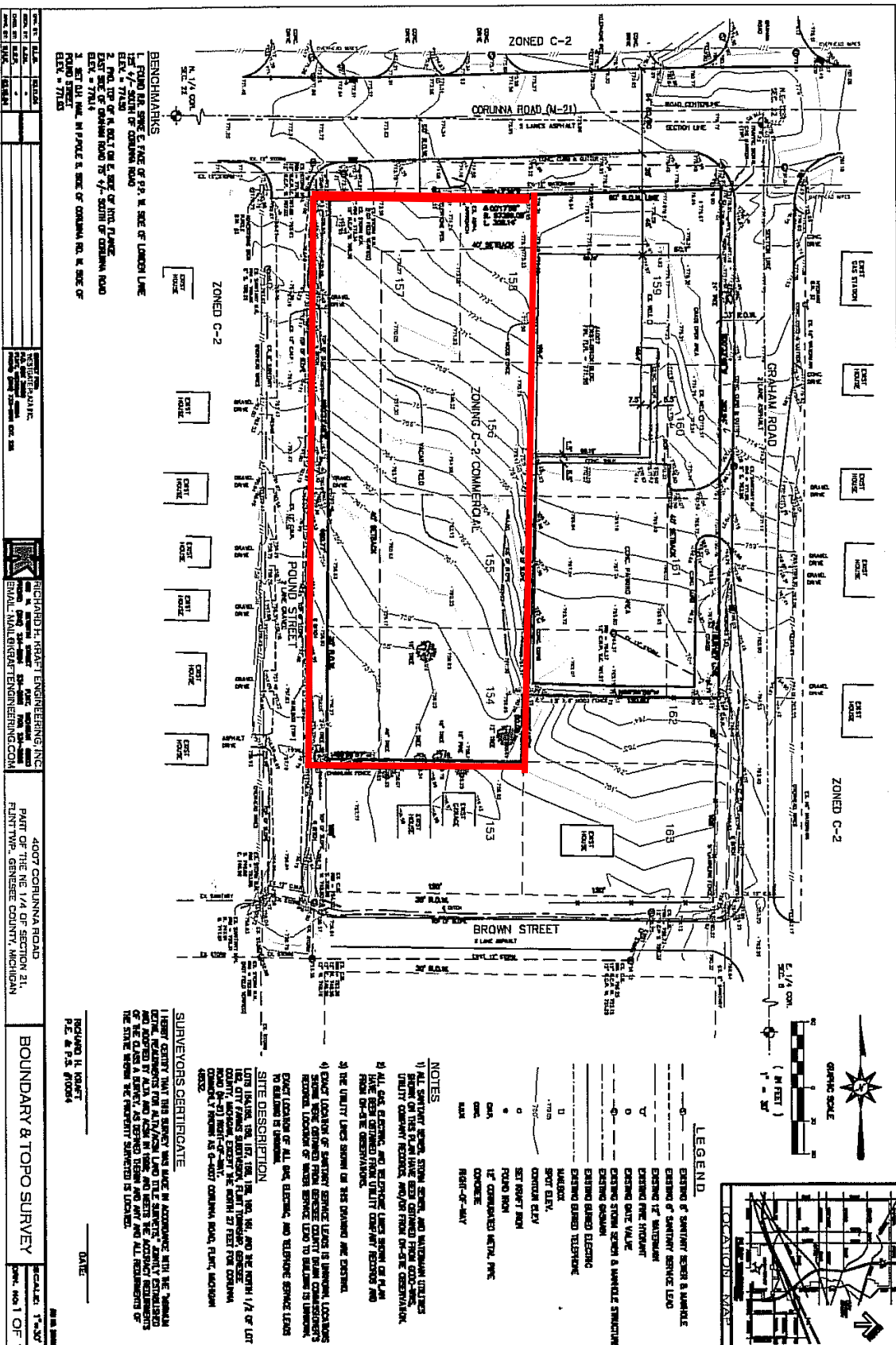
**Year:**

**Population: 1 mile** 10,763

**3 Mile:** 68,320

**5 Mile:** 162,603





**BENCHMARKS**

1. FOUND ON S.E. CORNER OF 1/4 SECTION 21, T14N, R12E, S12W, CORLISSA ROAD

2. FOUND ON S.E. CORNER OF 1/4 SECTION 21, T14N, R12E, S12W, CORLISSA ROAD

3. SET ON N.W. CORNER OF 1/4 SECTION 21, T14N, R12E, S12W, CORLISSA ROAD

4. SET ON S.W. CORNER OF 1/4 SECTION 21, T14N, R12E, S12W, CORLISSA ROAD

5. SET ON N.W. CORNER OF 1/4 SECTION 21, T14N, R12E, S12W, CORLISSA ROAD

**BOUNDARY & TOPO SURVEY**

4007 CORLISSA ROAD  
 PART OF THE NE 1/4 OF SECTION 21,  
 FULTON TWP., GENESSEE COUNTY, MICHIGAN

**Richard H. Rieffl Engineering, Inc.**  
 11111 W. 14th Ave., Suite 100, Grand Rapids, MI 49508  
 Phone: (616) 941-1111 Fax: (616) 941-1112

**Richard H. Rieffl**  
 P.E. & P.S. #10054

**DATE:** \_\_\_\_\_

**SCALE:** 1"=30'

**SHEET NO. 1 OF 1**