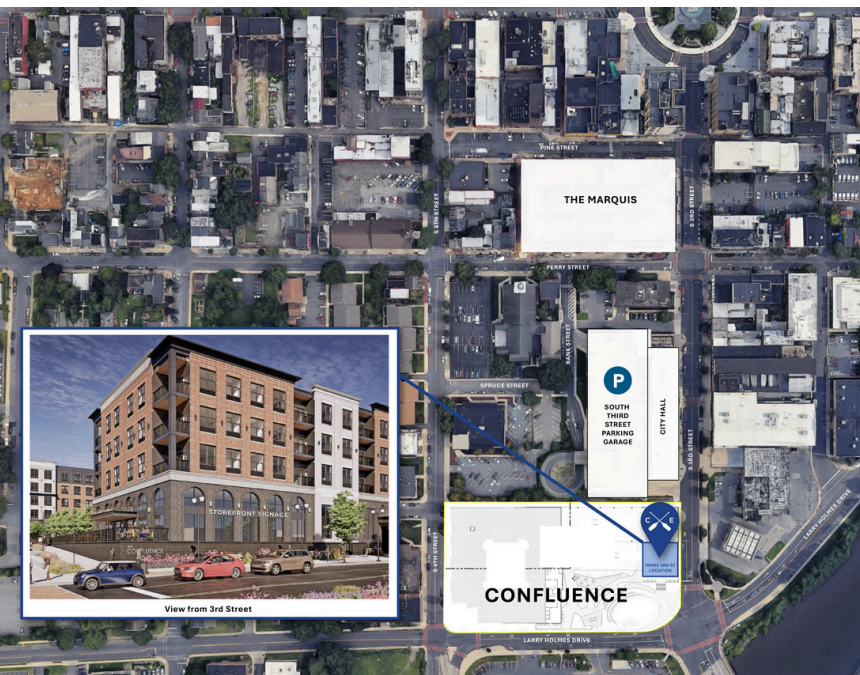


NOW LEASING THE CONFLUENCE

DOWNTOWN EASTON, PA



THE CONFLUENCE COMING TO DOWNTOWN EASTON LATE 2026



4,800 SF OF PRIME RETAIL SPACE AVAILABLE

- ANCHOR OPPORTUNITY IN A NEW MIXED-USE DEVELOPMENT FEATURING 274 APARTMENTS, WITH ANOTHER 264 UNITS AT THE MARQUIS JUST A HALF BLOCK AWAY.
- MINUTES FROM ROUTE 22 AND I-78
- STEPS FROM THE LIVELY CENTRE SQUARE CIRCLE AND THE ACTIVE WATERFRONT DISTRICT
- LOCATED IN THE HEART OF EASTON'S VIBRANT DINING AND SHOPPING SCENE.
- TENANT IMPROVEMENT ALLOWANCE AVAILABLE



The Confluence is a mixed-use building with 274 apartments, prominently located at the corner of 3rd Street and Larry Holmes Drive in downtown Easton. Prime space is available on the ground floor, offering high visibility and foot traffic in a vibrant urban setting.



MEGAN COLON

MCOLON@CITYCENTERGRP.COM

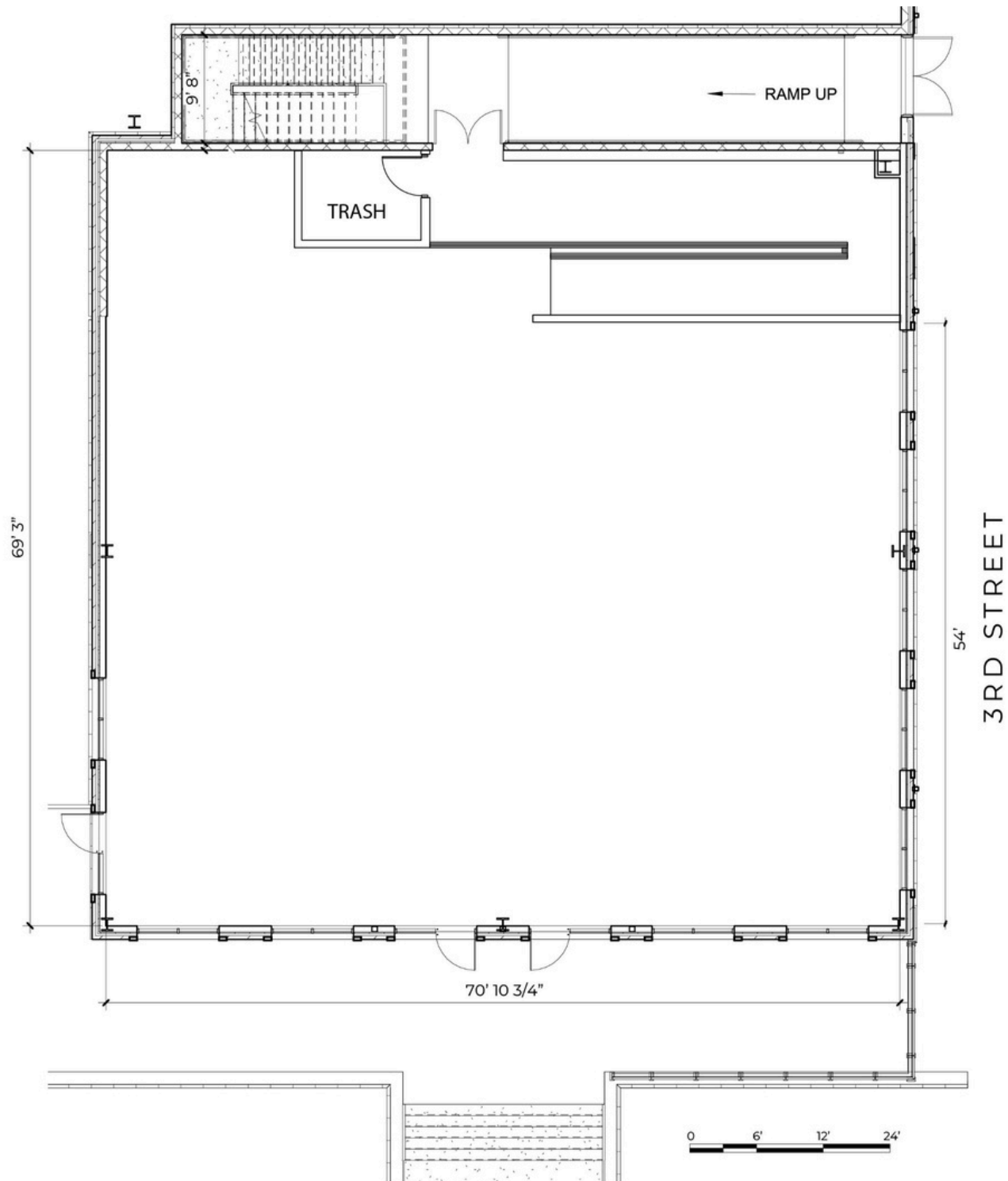
610.625.5538

NOW LEASING THE CONFLUENCE

DOWNTOWN EASTON, PA



OPTION 1:



MEGAN COLON

MCOLON@CITYCENTERGRP.COM

610.625.5538