

For Sale

2,130 SF | Standalone Corner Retail
Incredible Biltmore Village Opportunity



For Sale
2,130 SF
Retail Space



1 Swan St.

Asheville, North Carolina 28803

Property Overview

Exceptional opportunity to own a cornerstone of historic Biltmore Village at a significant discount. Located at the high-visibility corner of Swan & Brook Streets (14,700+ daily traffic), this former jewelry store offers unmatched potential. While Hurricane Helene impacted the area, this building was swiftly remediated with full demo and professional drying. No major structural damage, just a clean slate ready for your vision and fresh buildout. With on-site parking and prime pedestrian and vehicular exposure, this is a trophy asset ready for rebirth. Don't miss your chance to bring this iconic property back to life.



Offering Summary

Sale Price:	\$775,000
Building Size:	2,130 SF
Zoning:	CBI
Lot Size:	0.11 Acres

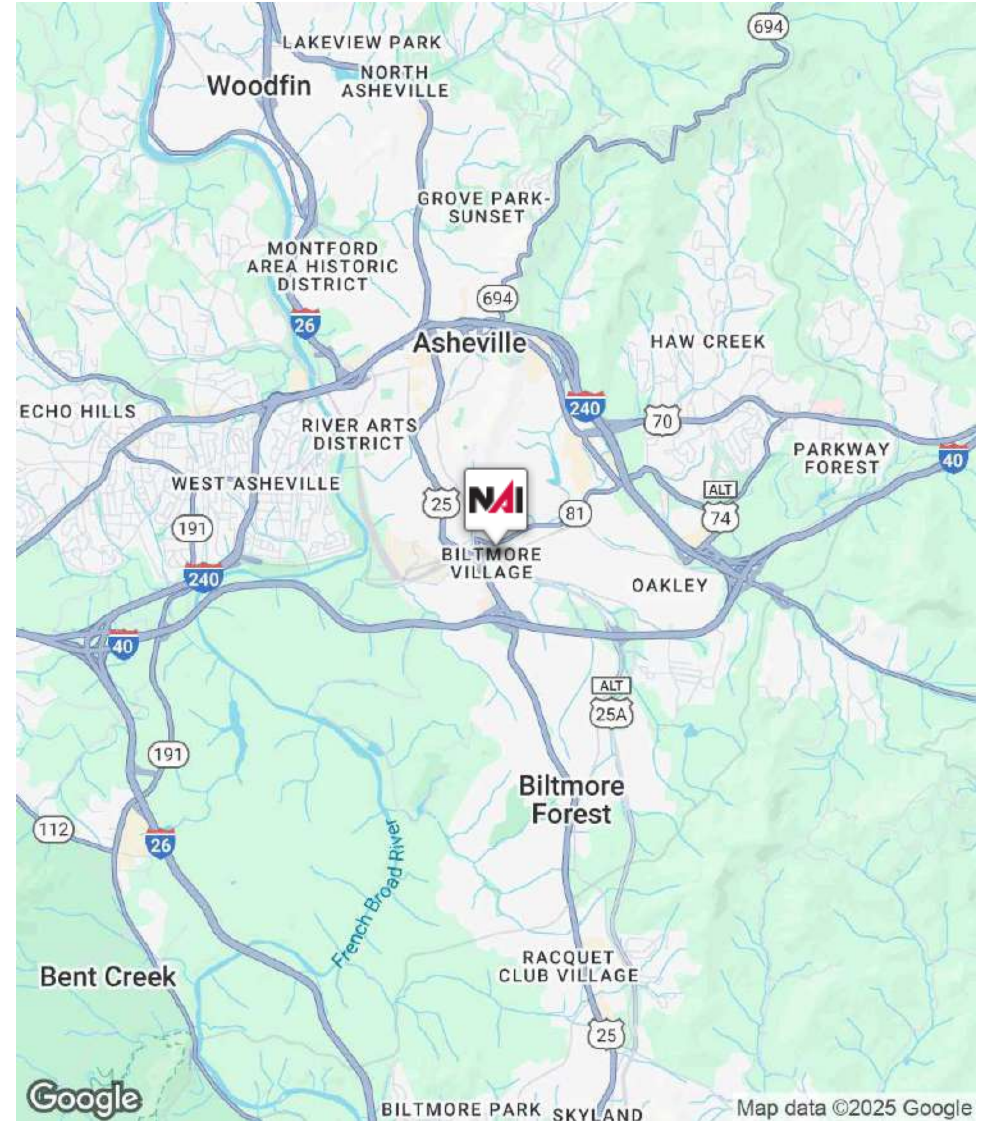
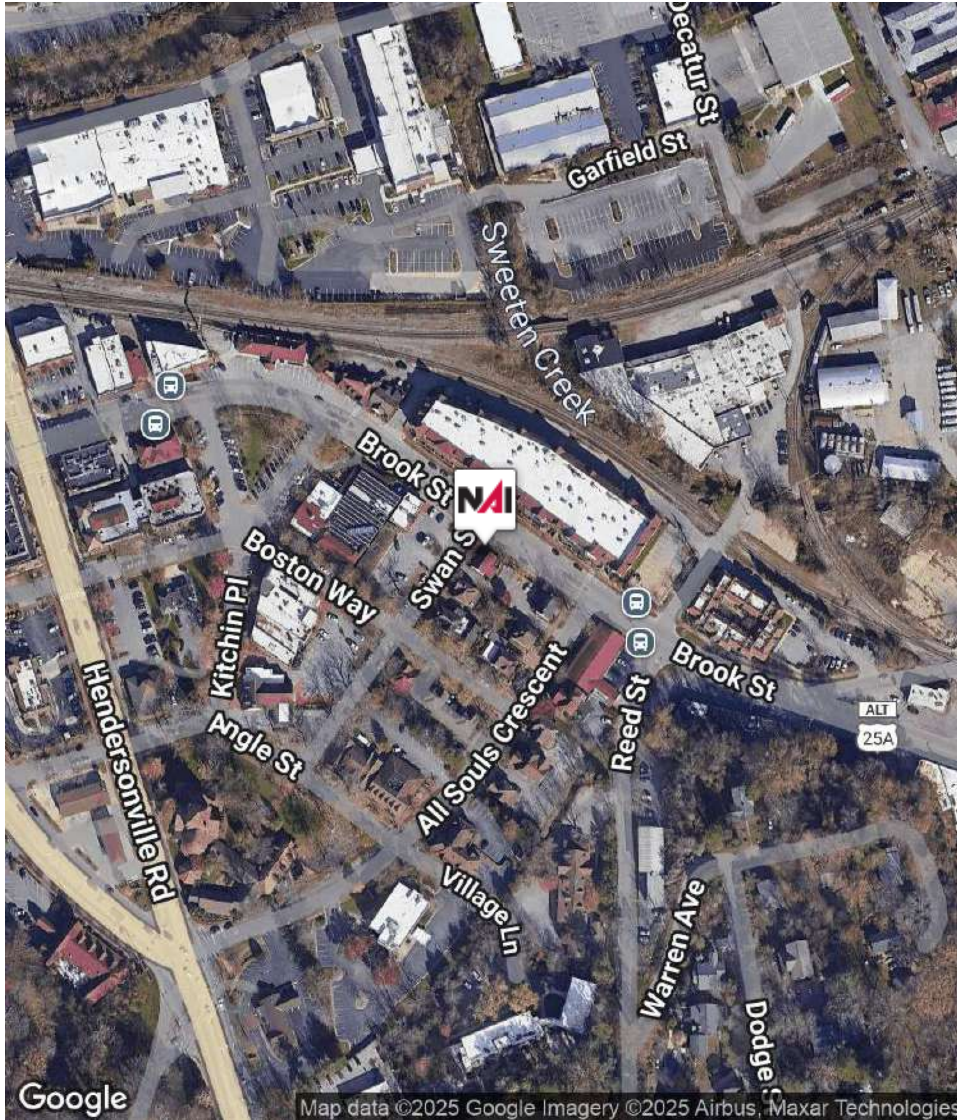
For More Information

Jim Davis

C: 330 718 3311

jdavis@naibeverly-hanks.com | NC #292479

For Sale
2,130 SF
Prime Location



For Sale
2,130 SF
Exterior Photos





For Sale

Own A Piece of Asheville History

Historic Background Of Biltmore Village

Biltmore Village was envisioned in the 1890s by George W. Vanderbilt as a charming “company town” to serve his grand estate. Designed to evoke an English village, it included its own post office, school, church, shops, hospital, and train station—built so estate workers could live, work, and shop within walking distance. Spearheaded by architect Richard Morris Hunt and Frederick Law Olmsted, followed by supervising architect Richard Sharp Smith, the village was among the nation’s earliest planned mixed-use communities. The Village remains a vibrant commercial district, celebrated for its English cottage architecture, tree-lined streets, and a rich mix of boutiques and eateries.



History Of Swan Street Cottages In Biltmore Village

The cottages lining Swan Street are part of the nationally recognized Biltmore Village Cottage District—comprising around 14 historic buildings constructed circa 1900 by Richard Sharp Smith under Vanderbilt’s direction. These charming half-timbered, pebbledash-finished cottages, many with recessed porches, multiple gables, and steep roofs, were originally rental homes built for estate workers. They reflect a harmonious blend of Arts & Crafts, Tudor Revival, and English cottage styles—a testament to Smith’s architectural vision and an enduring part of Asheville’s historic fabric. Over a century later, these cottages remain a key feature of Biltmore Village’s architectural identity.

Recovery In Progress

Be a part of the historical comeback!

Recovery Progress In Biltmore Village

-Vibrant reopening: The Grand Bohemian Lodge, a prominent 104-room hotel in Biltmore Village, reopened May 8, 2025, following a full renovation of its lobby and first floor.

-Strong comeback: Approximately 75–80% of businesses plan to return, reflecting a community-wide effort to rebuild. (WLOS)

-Corner Kitchen resurgence: This iconic restaurant has made significant strides toward reopening in July 2025. (BPR)

-Retail revival: Monkee's Boutique and Palm Village are slated to reopen imminently, with new restoration efforts underway. (WLOS)

-Ahead of anniversary: Many shops and restaurants expect to be fully operational by the one-year mark of September 2025.

-Tourism engine: The reopening of both the Biltmore Estate (Nov 2024) and the Village's hotels and shops is stimulating a steady inflow of visitors, essential to economic recovery.



For More Info
or a private tour...
Please Contact:

Jim Davis - Commercial Broker

NAI Beverly-Hanks | Broad River Capital
Member Associate, Society Of Industrial and Office Realtors
North Carolina Economic Development Association Member

Phone: 330-718-3311

Email: Jdavis@NAIBeverly-Hanks.com

