

DVCP

12651 & 12671 HIGH BLUFF DRIVE
SAN DIEGO, CA 92130



DMCP

STEVE BRUCE

Vice Chair & Co-Lead
t 858 291 1414
steve.bruce@colliers.com
CA RE Lic. #01455744

CHRIS HIGH, SIOR

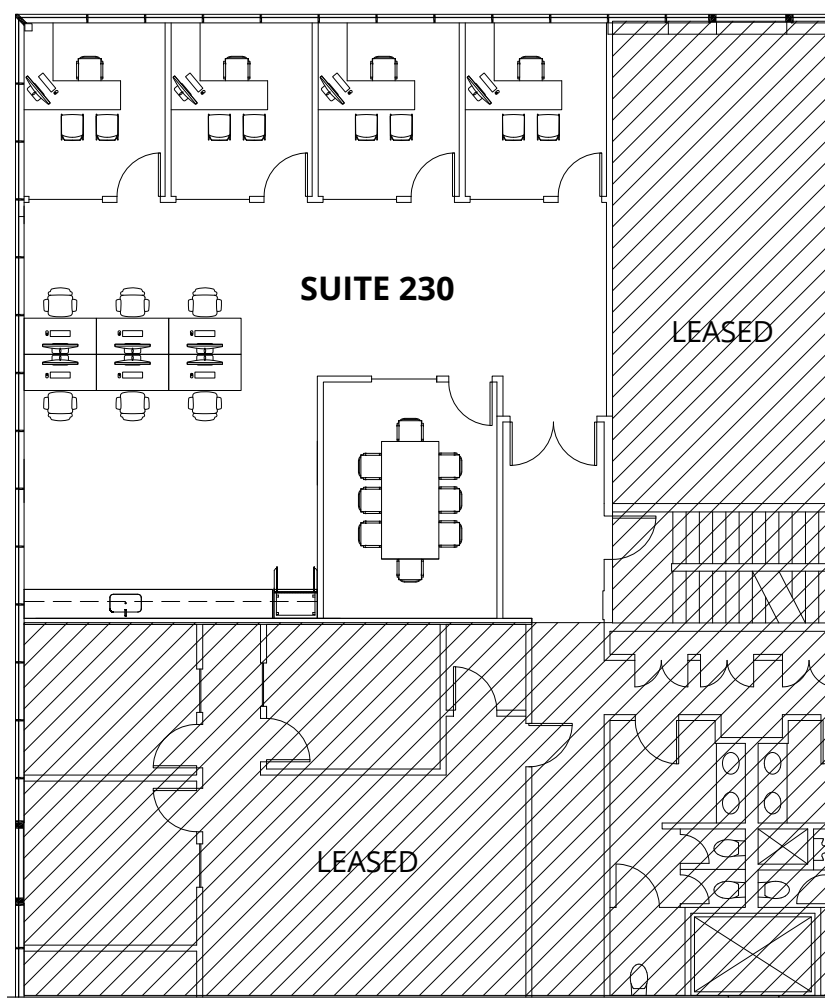
Vice Chair & Co-Lead
t 858 291 1413
chris.high@colliers.com
CA RE Lic. #01734544

CONOR EVANS

Vice President
t 858 291 1415
conor.evans@colliers.com
CA RE Lic. #01963596

**12651 & 12671
HIGH BLUFF DRIVE**
SAN DIEGO, CA 92130





12651 BLDG

Floor 2

Suite 230 - 1,809 RSF Available

LEASE RATE: \$5.25 + E

AVAILABILITIES | 12651 BLDG

Suite	RSF	
230	1,809	Creative Spec Suite







PROPERTY DETAILS

- DMcp is located within the 102-acre San Diego Corporate Center
- Two Building Office Project: One three-story ±34,462 SF Class B office building and One three-story ±38,863 SF Class B office building
- Built in 1984 with renovations completed in 2017
- 3.5 / 1000 Parking Ratio
- Open floor plans with abundant natural light
- Convenient access to Interstate 5 and Highway 56
- Several “walkable” restaurant options including Shake Shack, Cava and North Italia
- Direct access to walking and biking path behind the project
- 3 minute walk to One Paseo
- Adjacent to prominent Del Mar, Rancho Santa Fe, Fairbanks Ranch and La Jolla neighborhoods.
- 5 minute drive to Old Del Mar and the beach

ON- SITE AMENITIES

- Recently renovated building lobbies, common areas and restrooms
- Indoor / Outdoor Fitness Center with showers and lockers
- Private patios in some spaces
- Ample parking with covered stall options

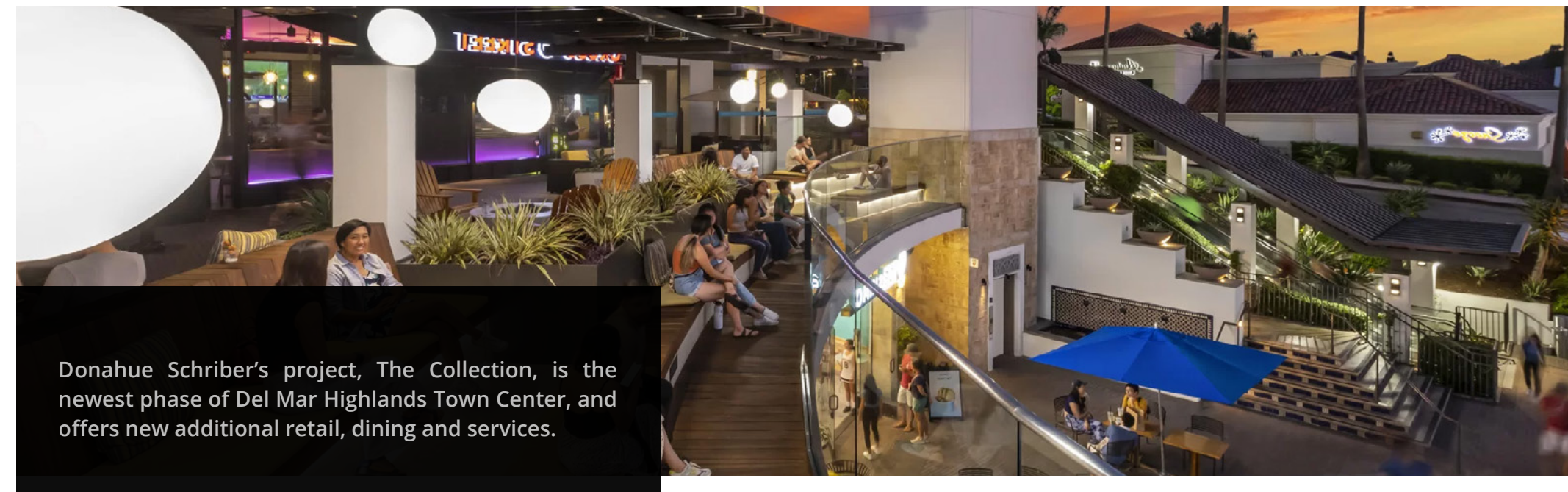


LOCATION RETAIL AMENITIES

1. Del Mar Highlands Towne Ctr
2. One Paseo
(Office/Retail/Residential)
3. Carmel County Plaza
4. Beachside Del Mar
5. Piazza Carmel



Kilroy's One Paseo Development is an urban village walking distance from DMCP with 95,000 square feet of retail shops and restaurants along with 608 residential units and office space.



Donahue Schriber's project, The Collection, is the newest phase of Del Mar Highlands Town Center, and offers new additional retail, dining and services.

DMCP

12651 & 12671 HIGH BLUFF DRIVE
SAN DIEGO, CA 92130

STEVE BRUCE

Vice Chair & Co-Lead
t 858 291 1414
steve.bruce@colliers.com
CA RE Lic. #01455744

CHRIS HIGH, SIOR

Vice Chair & Co-Lead
t 858 291 1413
chris.high@colliers.com
CA RE Lic. #01734544

CONOR EVANS

Vice President
t 858 291 1415
conor.evans@colliers.com
CA RE Lic. #01963596



©2024 Colliers International. Information herein has been obtained from sources deemed reliable, however its accuracy cannot be guaranteed. The user is required to conduct their own due diligence and verification.